



126 W 7TH STREET HINSDALE



126 W 7TH STREET
HINSDALE

LUXURY
PORTFOLIO
INTERNATIONAL

126W7TH.INFO

@properties



BRYAN BOMBA BROKER

630.286.9242 mobile
bryan@bryanbomba.com
www.hinsdalearearealestate.com/



126 W 7TH STREET
HINSDALE





126 W 7TH STREET THE UNDISPUTED CENTER OF TOWN AND THE BEST “WALK TO” LOCATION IN HINSDALE

ROOM DIMENSIONS

Foyer	12'x12'
Living Room	13'x12'
Dining Room	15'x12'
Kitchen	14'x12'
Breakfast Room	12'x10'
Family Room	16'x12'
Office	14'x10'
Mud Room	14'x10'
Breezeway	16'x5'
Master Bedroom	18'x15'
Master Bedroom Closet ...	13'x12'
Bedroom 2	15'x11'
Bedroom 3	13'x13'
Bedroom 4	13'x13'
Laundry Room	15'x13'

FEATURES

Live in the undisputed center of town and enjoy daily benefits of the best “walk to” location in Hinsdale. There is just one section of Hinsdale where every truthful Hinsdalean would say “I’d love to live there” and this is it. The house was reimagined in 2013 by the architectural savant, Mike Abraham. The look is unmistakably cool. And it’s like living in new construction. Over 3,600 of real above ground square feet and you can feel it. So much more spacious than competing properties. Truly, a rare opportunity for a lucky buyer.

- Renovated in 2013
- Designed by Mike Abraham
- 3,601 square feet
- 4 bedrooms
- 3.1 bathrooms
- First floor office



BRYAN BOMBA BROKER

630.286.9242 mobile

bryan@bryanbomba.com
www.hinsdalearearealestate.com/



Bryan
Bomba
Group







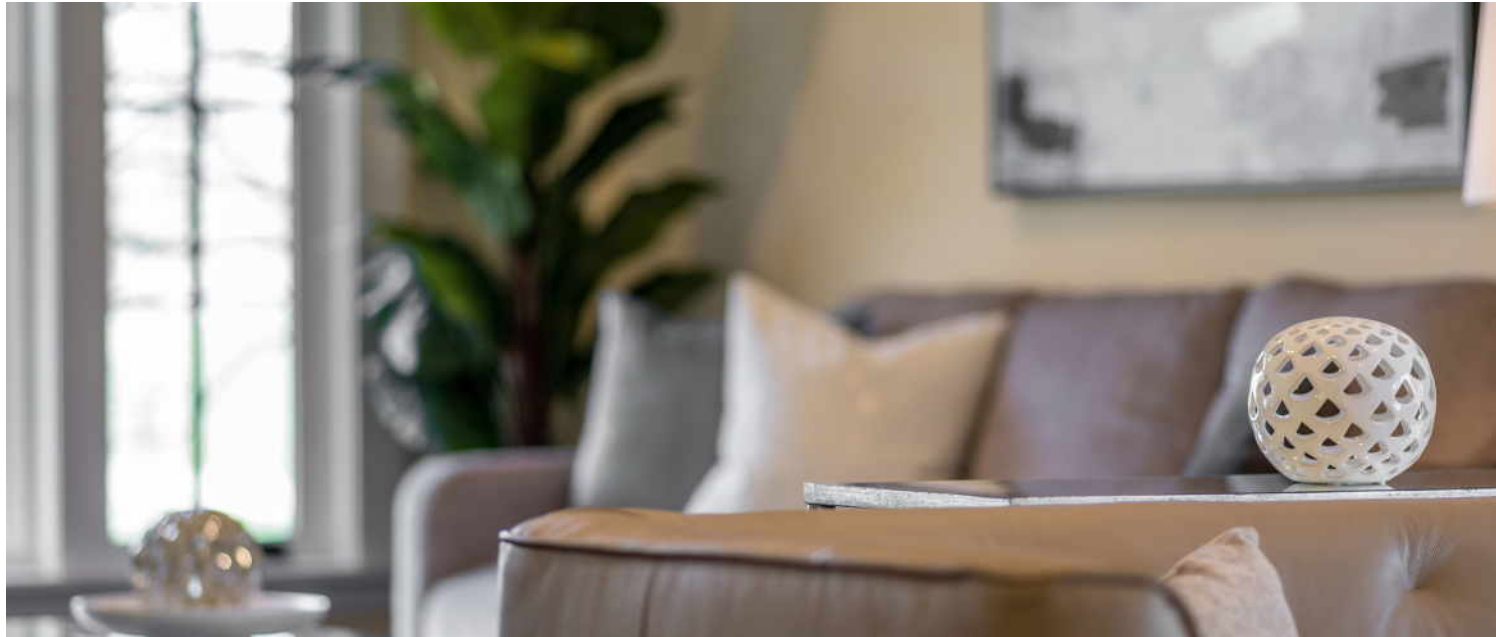




















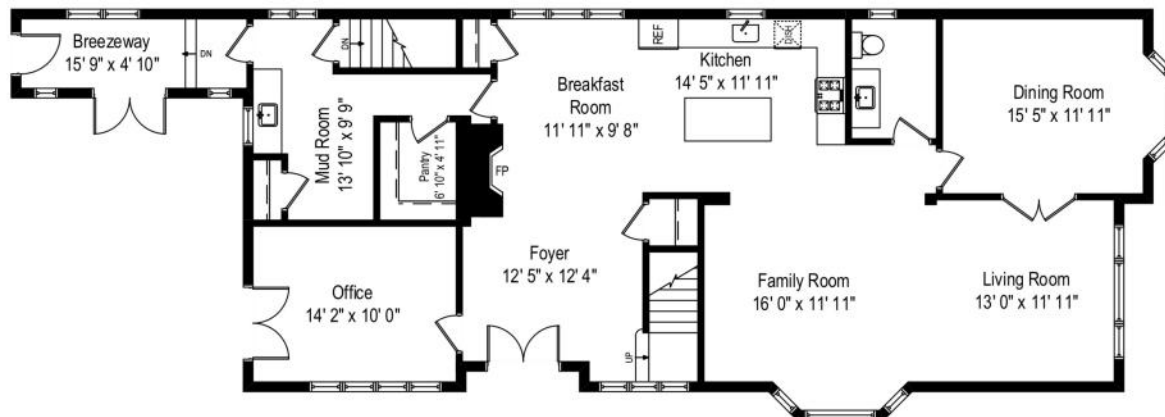










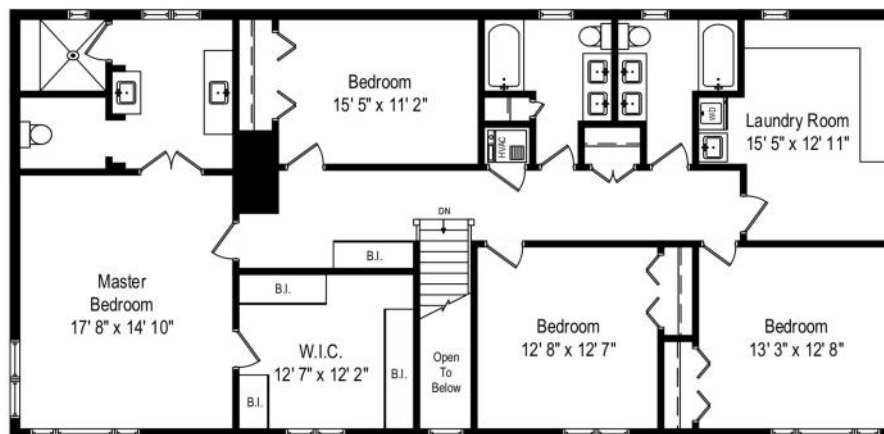


126 W. 7th Street - Hinsdale, IL 60521

First Level



All dimensions are approximate. This plan is for marketing purposes only.

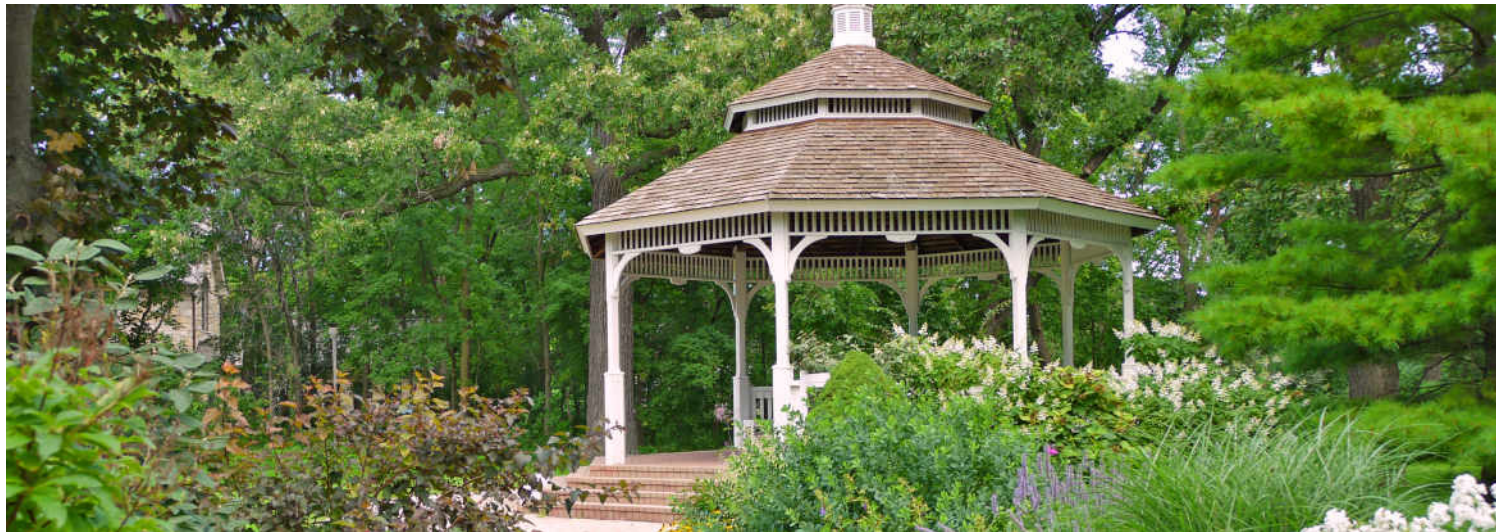


126 W. 7th Street – Hinsdale, IL 60521

Second Level



All dimensions are approximate. This plan is for marketing purposes only.



HINSDALE'S HISTORIC DOWNTOWN AND BEAUTIFUL HOMES ATTRACT SOME OF THE STATE'S MOST AFFLUENT RESIDENTS, EARNING THE SUBURB ITS RANKING AS ONE OF THE WEALTHIEST ZIP CODES IN ILLINOIS

Locals love the natural beauty and historic elegance of Hinsdale, which boasts a number of scenic parks and architectural landmarks.

Several notable people have made their home here including Chicago Blackhawks' head coach Joel Quenneville and renowned architect R. Harold Zook.

A walk through downtown Hinsdale is a step back in time. The downtown district is on the National Register of Historic Places with several historic buildings dating back to before the community was incorporated in 1873.

The community has a wealth of amenities including the Katherine Legge Memorial Park and Lodge and Hinsdale Community Swimming Pool. There are also numerous parks and athletic facilities including tennis courts, baseball and soccer fields.

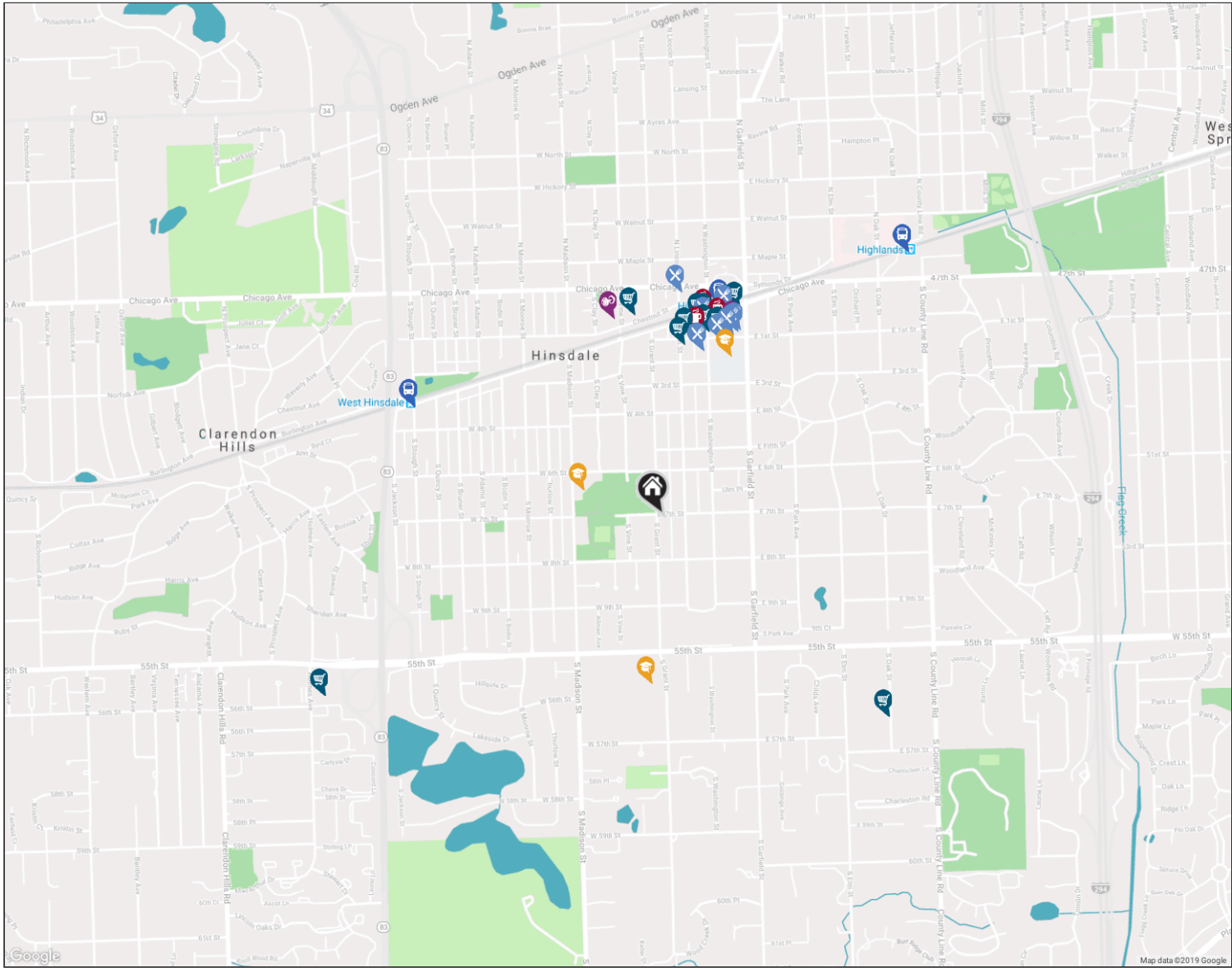
Students attend Community Consolidated School District 181 and the Hinsdale Township High School District 86, which includes Hinsdale South High School and Hinsdale Central High School, ranked one of the best high schools in the country.

Hinsdale has easy access to the Tri-State Tollway, Stevenson Expressway and three train stations along Metra's BNSF Railway.

NEIGHBORHOOD GUIDE MAP

126 W 7TH STREET

26



NEIGHBORHOOD GUIDE



RESTAURANTS

- Vistro
112 SOUTH WASHINGTON STREET,
0.5 MI
- Baldinelli Pizza of Hinsdale
114 SOUTH WASHINGTON STREET,
0.5 MI
- Nabuki
18 EAST 1ST STREET, 0.5 MI
- Jade Dragon Restaurant
43 SOUTH WASHINGTON STREET, 0.5 MI
- Harry & Eddie's
29 EAST 1ST STREET, 0.5 MI
- Fontano's Subs
9 SOUTH LINCOLN STREET, 0.6 MI
- Fuller House
35 EAST 1ST STREET, 0.6 MI
- Page's Restaurant
26 1/2 EAST HINSDALE AVENUE, 0.6 MI

- Dips & Dogs
50 SOUTH GARFIELD, 0.6 MI



COFFEE SHOPS

- Einstein Bros. Bagels
54 SOUTH WASHINGTON STREET, 0.5 MI
- Starbucks
33 S. WASHINGTON BLVD, 0.6 MI
- Cafe La Fortuna Hinsdale
46 VILLAGE PLACE, 0.6 MI



SHOPPING

- The Fruit Store
26 WEST 1ST STREET, 0.5 MI
- Bluemercury
21 EAST 1ST STREET, 0.5 MI
- Toni Sweets
51 SOUTH WASHINGTON STREET, 0.5 MI

- Hinsdale Flower Shop
17 WEST 1ST STREET, 0.5 MI

- Corner Bakery Cafe
42 EAST HINSDALE AVENUE, 0.6 MI

- Stockholm Objects
39 SOUTH WASHINGTON STREET, 0.6 MI

- Alixandra Collections
40 SOUTH WASHINGTON STREET # 1,
0.6 MI

- Walgreens
15 GRANT SQUARE, 0.6 MI

- Vern Goers Greenhouse Inc
5620 SOUTH OAK STREET, 0.8 MI

- Jewel-Osco
303 HOLMES AVE, 1.1 MI



HEALTH CLUBS

- Hinsdale Fitness Club
35 EAST 1ST STREET, 0.6 MI

- CorePower Yoga
34 SOUTH VINE STREET, 0.6 MI



SCHOOLS

- Madison Elementary School
611 SOUTH MADISON ST, 0.2 MI
- Hinsdale Middle School
100 SOUTH GARFIELD ST, 0.5 MI
- Hinsdale Central High School
5500 SOUTH GRANT ST, 0.5 MI



TRANSIT

- Hinsdale
METRA - BNSF RAILWAY, 0.6 MI
- West Hinsdale
METRA - BNSF RAILWAY, 0.8 MI
- Highlands
METRA - BNSF RAILWAY, 1.0 MI

NO REPRESENTATIONS ARE MADE REGARDING THE ACCURACY OF THE INFORMATION PROVIDED.
ALL DATA IS SUBJECT TO CHANGE AND SHOULD BE VERIFIED WITH LOCAL SOURCES.



@properties®

Leading REAL ESTATE
COMPANIES
OF THE WORLD®

LP
LUXURY
PORTFOLIO
INTERNATIONAL®

