

12915 ALPINE WAY  
PLAINFIELD



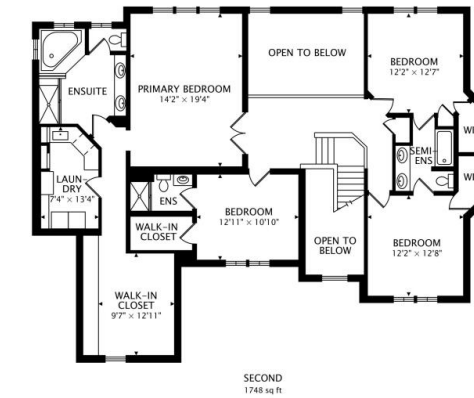
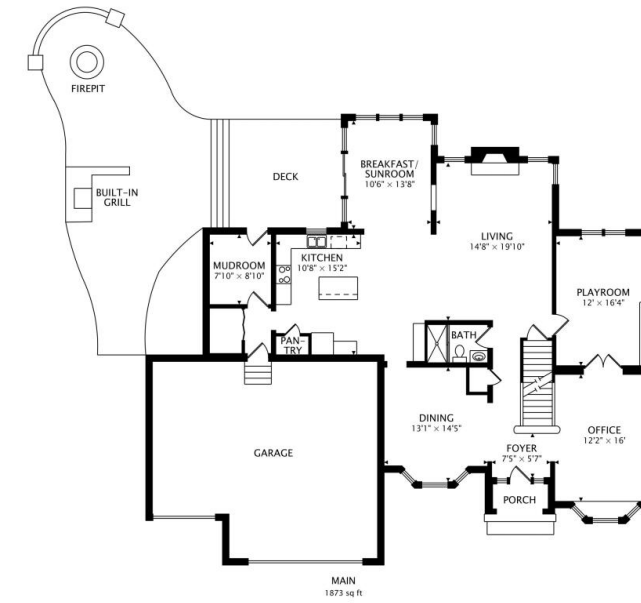
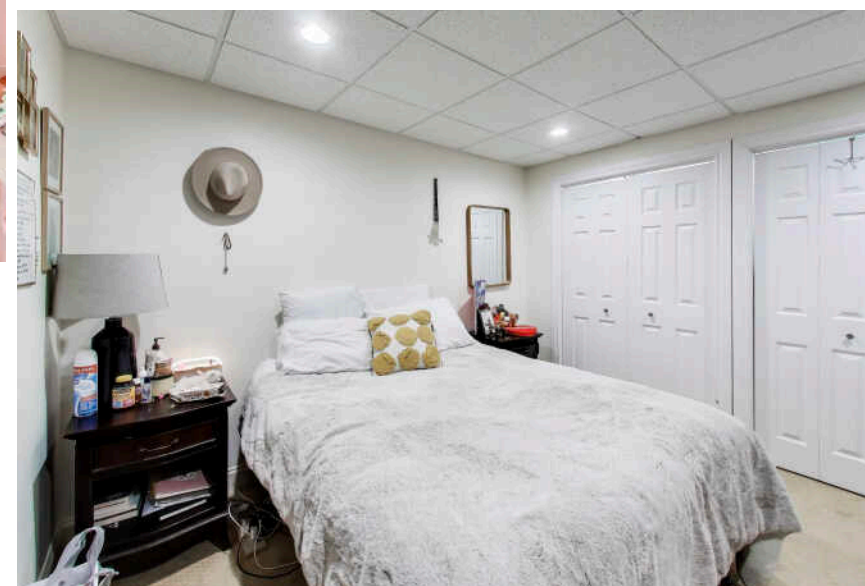


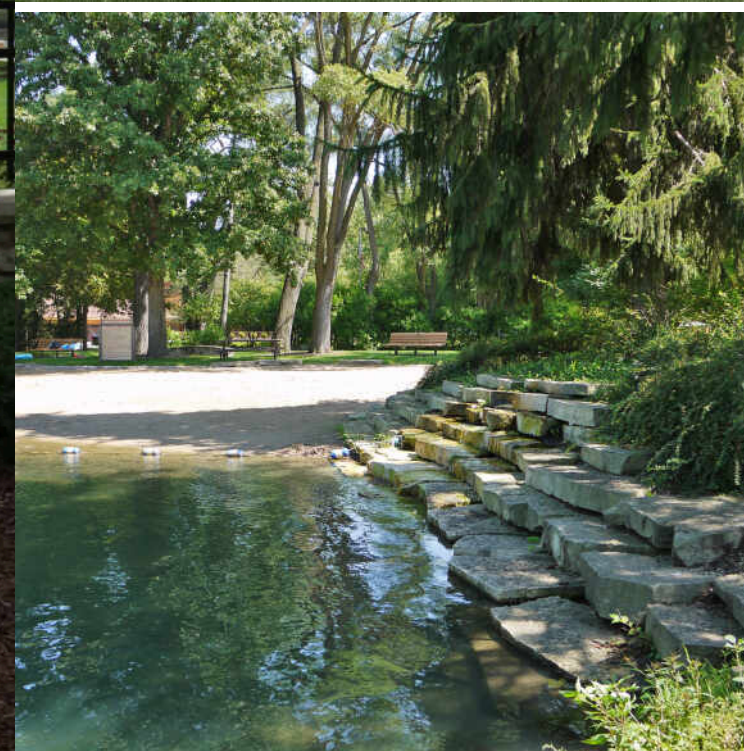
**7 BEDROOM**  
**5 BATH**  
**TAXES: \$16,360**  
**ASSESSMENTS: \$1,250**

## GRANDE PARK COMMUNITY

The kind of home buyers hope hits the market. Welcome to Plainfield's highly desirable Grande Park community, where space, luxury finishes, and resort-style amenities come together in one exceptional home. This custom-built 7-bedroom, 5 full bath home with a 3.5-car garage immediately impresses with a dramatic two-story foyer and stunning chandelier, leading into a beautifully designed layout filled with natural light. Throughout the home you'll find Brazilian cherry hardwood floors with granite inlays, crown molding, tray ceilings, and thoughtful custom details. The gourmet kitchen is built for both entertaining and everyday living, featuring granite countertops, custom 42" cabinetry, double ovens, a large center island, butler's station, desk, and pantry. The kitchen opens to a heated sunroom surrounded by windows, with access to the deck and backyard complete with built-in grill, fire pit, brick pavers and landscaping. The two-story family room showcases soaring windows and a beautiful granite fireplace. Upstairs, the primary suite offers a true private retreat with spa-like bath, jetted tub, walk-in shower, dual vanities, large walk-in closet, 2nd laundry room and a separate sitting room perfect for a second office. The finished basement adds incredible flexibility with a large 6th & 7th bedrooms (or theater/gym), wet bar, full bath, spacious rec room, and laundry room. Residents enjoy Grande Park's pools, clubhouse, parks, trails, athletic courts, and sledding hill, plus highly rated Oswego 308 schools, all minutes from downtown Plainfield, shopping, dining, and expressways. Homes like this rarely come available in Grande Park.





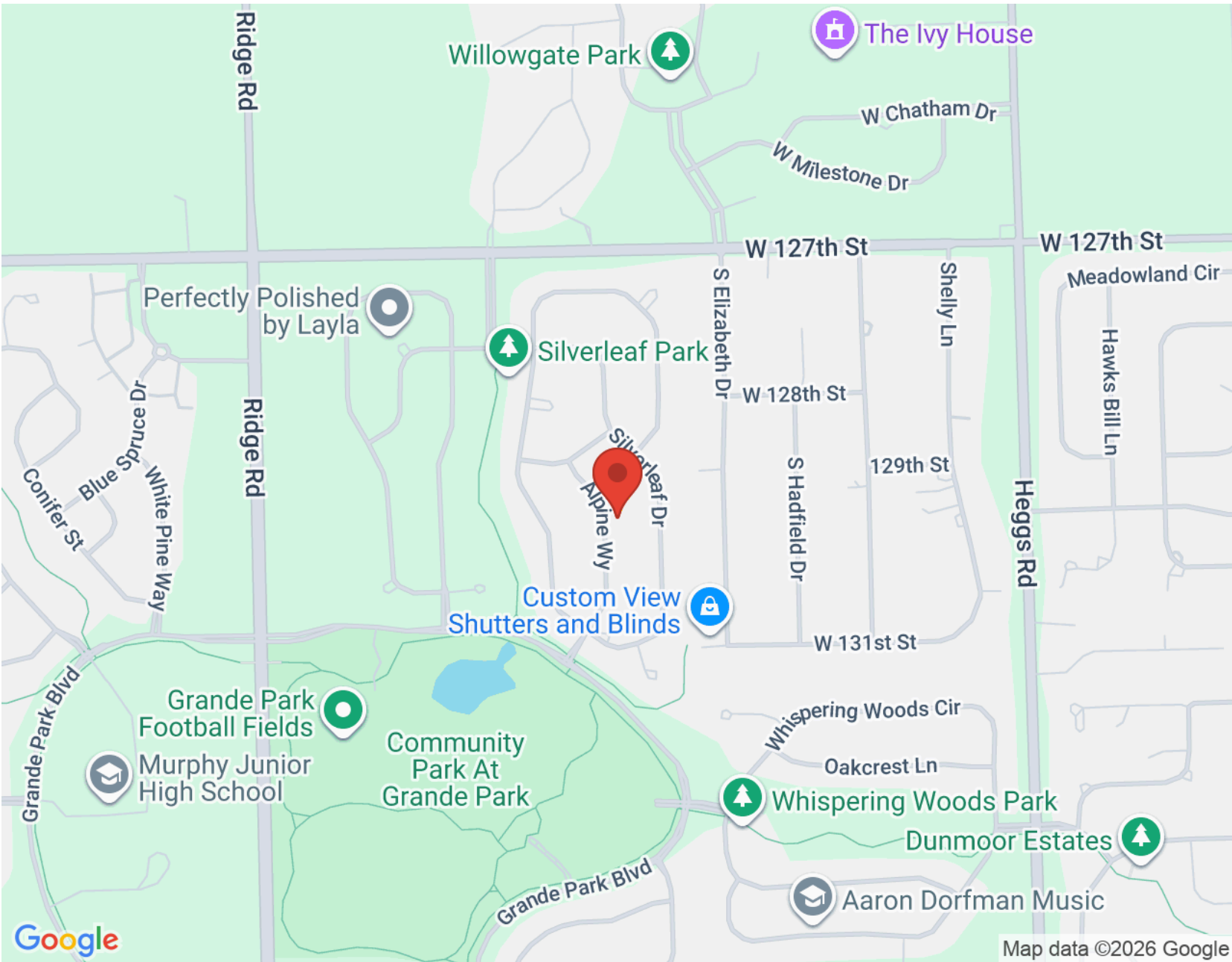


KNOWN AS “WILL COUNTY’S OLDEST COMMUNITY,” **PLAINFIELD** BOASTS A RICH HISTORY AND A THRIVING DOWNTOWN THAT HAS THE DISTINCTION OF BEING ON THE NATIONAL REGISTER OF HISTORIC PLACES.

Complete with picturesque landscaping and beautifully restored buildings, Downtown Plainfield offers ample shopping, dining, and entertainment. The area is also used for several events throughout the year, such as Plainfield Fest and Harvest 5K. Meanwhile, the community’s annual summer concert series and movies in the park are held at Settlers’ Park, which features an amphitheater, a lake, picnic shelter, playground, and trails.

The Lake Renwick Heron Rookery Nature Preserve offers residents and visitors the chance to see five species of birds during peak breeding seasons. The area comes equipped with guided tours, viewing scopes, and the Lake Renwick Bikeway, which is open all year.

Plainfield offers convenient access to I-55, which heads into downtown Chicago, as well as a number of highways.



NOTES \_\_\_\_\_

\_\_\_\_\_

\_\_\_\_\_

\_\_\_\_\_

\_\_\_\_\_

\_\_\_\_\_

\_\_\_\_\_

\_\_\_\_\_

\_\_\_\_\_

\_\_\_\_\_

\_\_\_\_\_



## JIM ONGENA

(312) 320-2188

JONGENA@ATPROPERTIES.COM

ONGENAGROUP.COM

