



1301 GREENWOOD AVENUE
WILMETTE



1301 GREENWOOD AVENUE • WILMETTE



MARY GRANT BROKER

312.339.2018 mobile
marygrant@atproperties.com

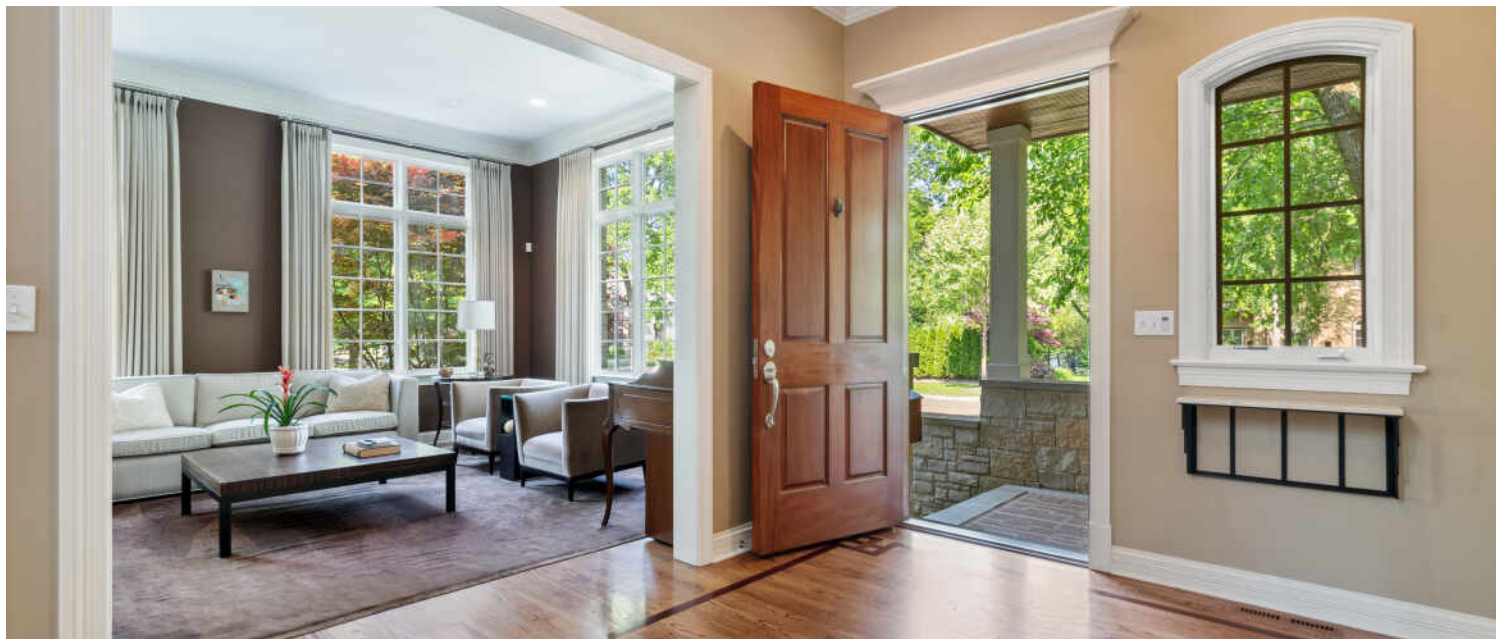
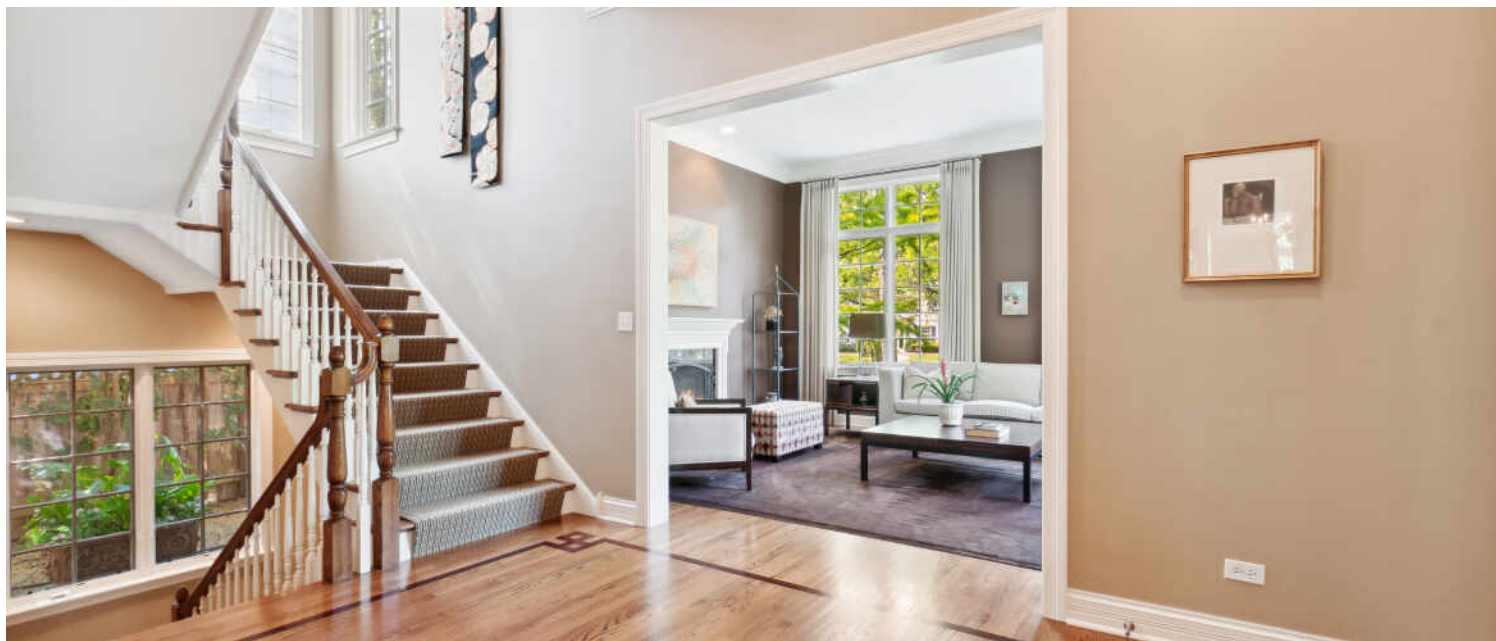


LIZ WATSON BROKER

847.323.3122 mobile
lizwatson@atproperties.com

1301 GREENWOOD AVENUE • WILMETTE





1301 GREENWOOD AVENUE IN THE CAGE!

ROOM DIMENSIONS

Foyer	15'x19'
Living Room	15'x19'
Dining Room	17'x16'
Family Room	21'x16'
Kitchen	19'x19'
Breakfast Room	11'x13'
Mudroom	9'x7'
Primary Bedroom	15'x19'
Second Bedroom	17'x16'
Third Bedroom	13'x14'
Fourth Bedroom	14'x14'
Laundry	9'x8'
Rec Room	35'x19'
Exercise Room	15'x15'
Fifth Bedroom	12'x15'

FEATURES

Set in the sought-after CAGE area of East Wilmette, this newer construction home, with a city chic vibe, checks all the boxes: an open floor plan, high ceilings, loads of light, exceptional finishes, a private yard, and easily walkable to town, shopping, restaurants, and the beach! The grand entry opens to the impressive living room with floor-to-ceiling windows and a gas fireplace to the north and to the stylish paneled formal dining room to the south. The classic kitchen, with high-end appliances and an oversized island, leads to the generous breakfast room and sun-drenched family room. This incredible family room space has a gas fireplace and French doors that open to the professionally landscaped yard and Zen-like gardens. The roomy mudroom and handsome powder room finish out this exceptional first-floor space. The second floor includes a private luxe primary suite with two walk-in closets and a spa-like bath with tub and shower. The three additional second-floor bedrooms all have views of the lush surroundings and treetops. Charming bedroom number two has an ensuite bath and walk-in closet. The other two bedrooms share a hall bath with double sinks and a bathtub/shower both with roomy closets and plenty of sunshine. A handy laundry room with counter space and a sink completes this floor. The extraordinary space in the lower level includes a large rec room, fireplace, wet bar, custom study desks, exercise room, fifth bedroom with full bath, walk-in closets, and tons of storage. The light streaming through the home and the exquisite views from every room set the tone for the desirable North Shore lifestyle of family living and entertaining.



MARY GRANT BROKER
312.339.2018 mobile
marygrant@atproperties.com



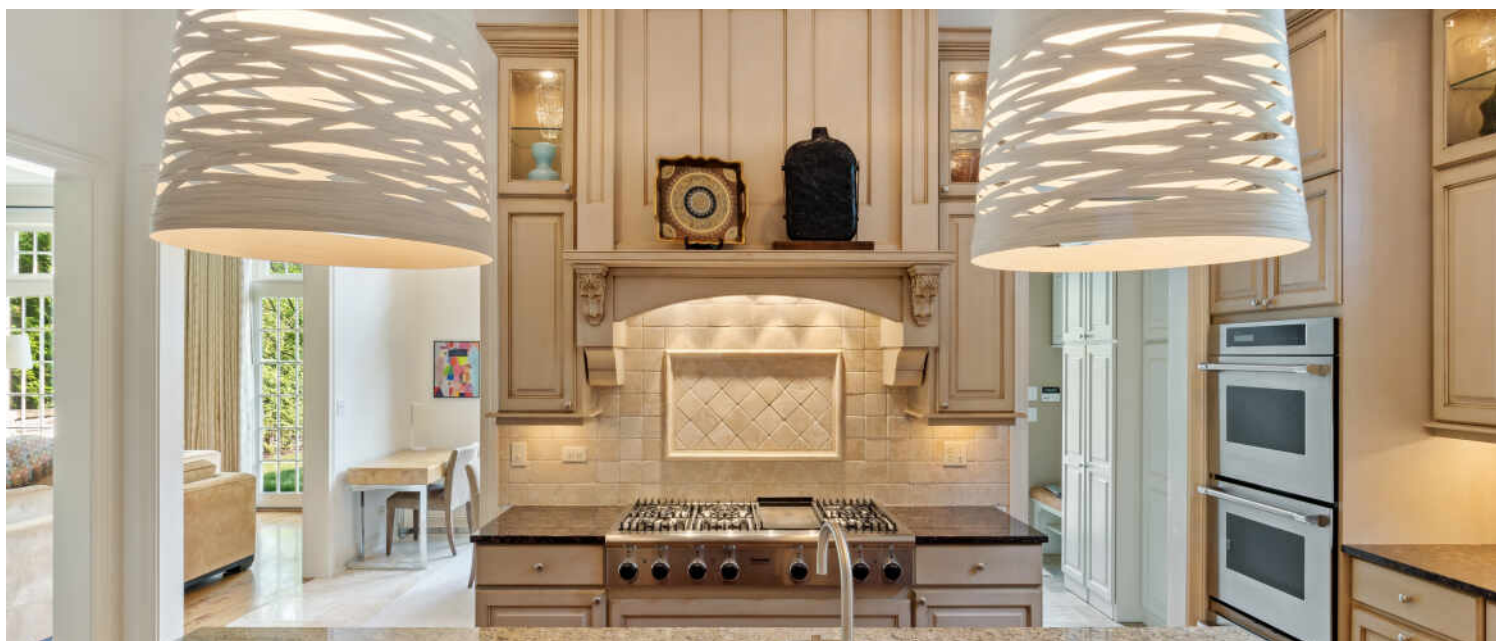
LIZ WATSON BROKER
847.323.3122 mobile
lizwatson@atproperties.com



































RANKED BY *CHICAGO* MAGAZINE AS ONE OF THE CHICAGO AREA'S BEST PLACES TO LIVE, **WILMETTE** IS A VIBRANT TOWN WITH A WEALTH OF AMENITIES.

Locals love the convenience that comes with living in this picturesque North Shore community. From shopping and fine dining to a beautiful lakefront setting that's within easy reach of downtown Chicago, Wilmette has it all.

When it comes to housing, there's no shortage of architectural styles and price points in this lakefront community. Quintessential Cape Cod, Victorian, and Colonial homes line the village's historic streets, many of which are paved with clay-fired bricks from the 1800s. In addition to single-family homes, there are beachfront condominiums and townhomes. While well-kept homes maintain Wilmette's rich architectural history in all of its glory, new construction attests to the village's enduring popularity.

Residents also have access to nationally recognized New Trier High School, located in Winnetka.

Wilmette's Metra station and access to I-94 make commuting to downtown Chicago a breeze, but there's plenty of reasons to stay local. At the heart of town is the Village Center, where you'll find specialty stores, restaurants, and the Wilmette Theatre. Along Sheridan Road there is Plaza del Lago, providing more shops and services to locals. Meanwhile, ample recreational activities are available at Gillson Park and beach, Wilmette Harbor, and the Centennial Recreation Complex, which includes swimming, tennis, and ice skating.





@properties® | CHRISTIE'S
INTERNATIONAL REAL ESTATE

Leading REAL ESTATE
COMPANIES
OF THE WORLD®

LP
LUXURY
PORTFOLIO
INTERNATIONAL®

