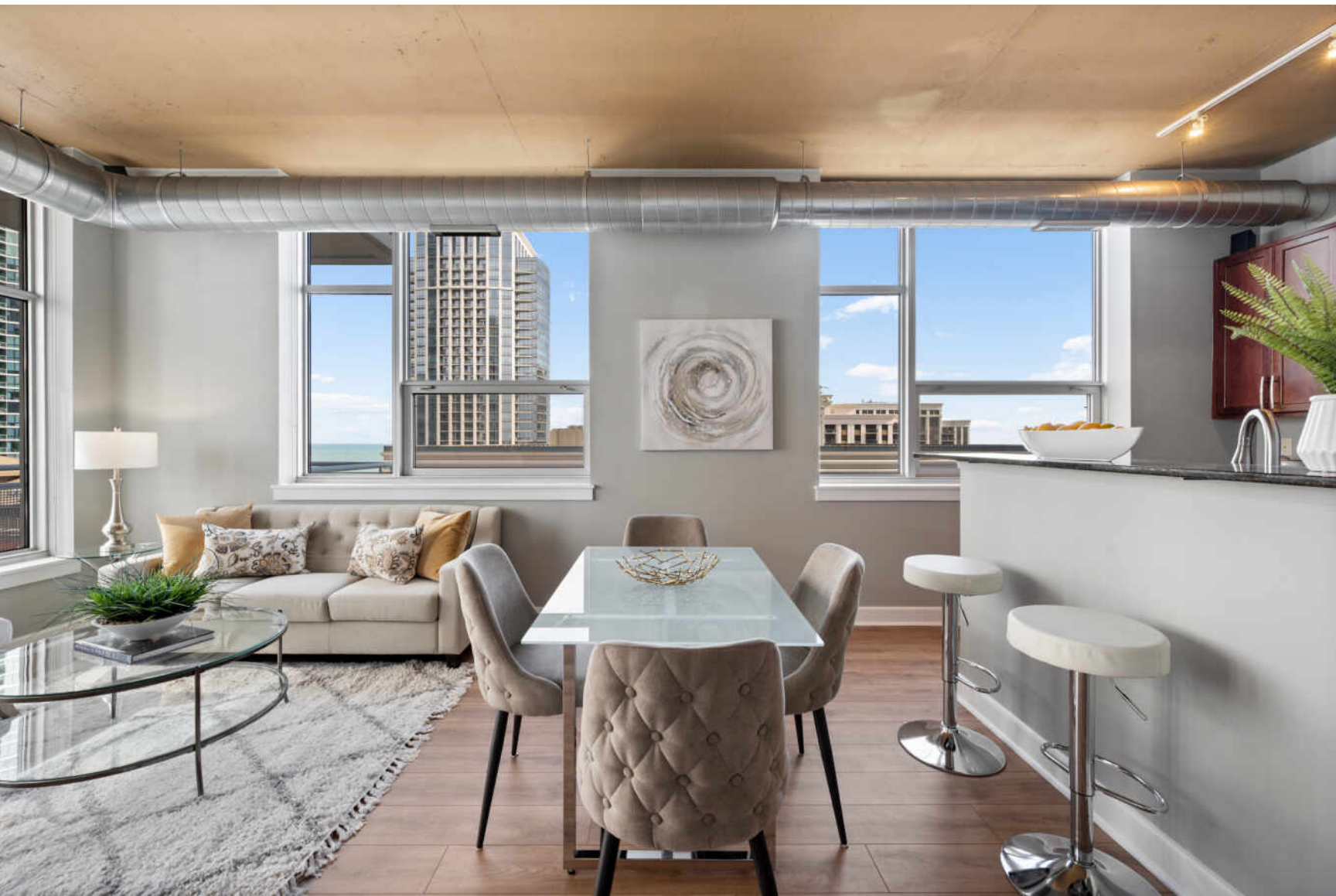


1305 S MICHIGAN AVENUE #1708
SOUTH LOOP

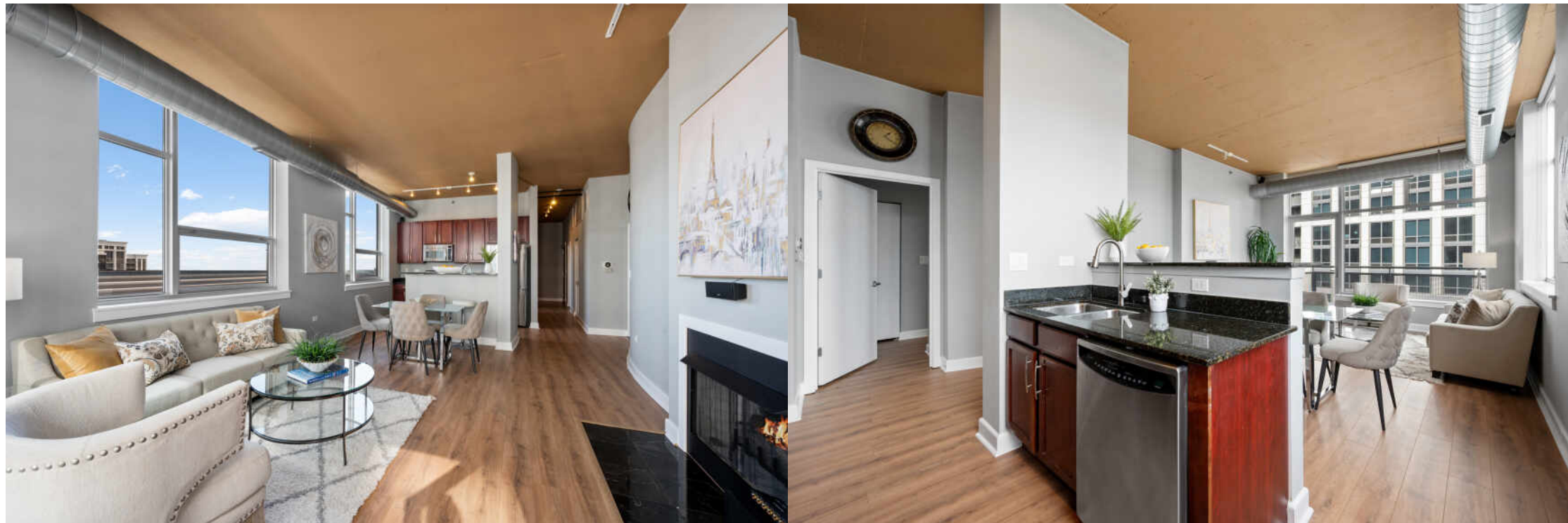




A PERFECT BLEND OF ELEGANCE AND CITY LIVING!

Welcome to this stunning high-floor corner residence at THE LOFTS AT MUSEUM PARK, where luxury, comfort, and breathtaking South Loop views come together. This sun-drenched home offers a split-bedroom layout, two full bathrooms, and a versatile den, perfect for a home office or additional living space. Plenty of windows fill the unit with natural light and showcase beautiful city views, which can also be enjoyed from the wraparound balcony overlooking Lake Michigan. The thoughtfully designed layout features brand-new flooring and fresh paint, creating a sophisticated, move-in-ready living environment. The elegant primary suite includes a bathtub, a double-sink vanity, and has been updated with new fixtures and a new toilet. The home also features a cozy gas fireplace, perfect for relaxing evenings, along with an in-unit washer/dryer and abundant closet space throughout. This impeccably maintained residence truly stands out for its condition, light, and layout.

2 BEDROOM
2 BATH
TAXES: \$8,299
ASSESSMENTS: \$572 / MONTH







CHARACTERIZED BY TOWERING HIGH RISES AND HISTORIC POCKETS THAT REFLECT THE AREA'S STORIED PAST, THE **SOUTH LOOP** IS A DISTINCTIVE CHICAGO NEIGHBORHOOD.

Chicago's original Gold Coast in the late 19th century, the South Loop was once home to the likes of Marshall Field, George Pullman, and Philip Armour. Today the vibrant neighborhood is known for its access to the lakefront, shops, restaurants, parks, Museum Campus, and The Loop.

The South Loop is comprised of several historic areas including Printer's Row, which features a number of buildings that have been converted into residential lofts, along with Motor Row District and Prairie Avenue District. Meanwhile, several apartment and condominium buildings are under construction, bringing thousands of new residences to the neighborhood.

The South Loop's housing boom has brought with it an influx of retailers along with eateries and nightlife on South Michigan Avenue. The Roosevelt Collection is a popular destination featuring a movie theater and an assortment of retailers.

Museum Campus is the cultural hub of the South Loop featuring attractions including the Field Museum, Shedd Aquarium, Adler Planetarium, and Soldier Field. Residents also enjoy being in close proximity to Northerly Island and public transportation including the CTA's Roosevelt station.



ADA BELSON

1 2247303030

7734720200

ADABELSON@ATPROPERTIES.COM