

1305 S MICHIGAN AVENUE 701
SOUTH LOOP





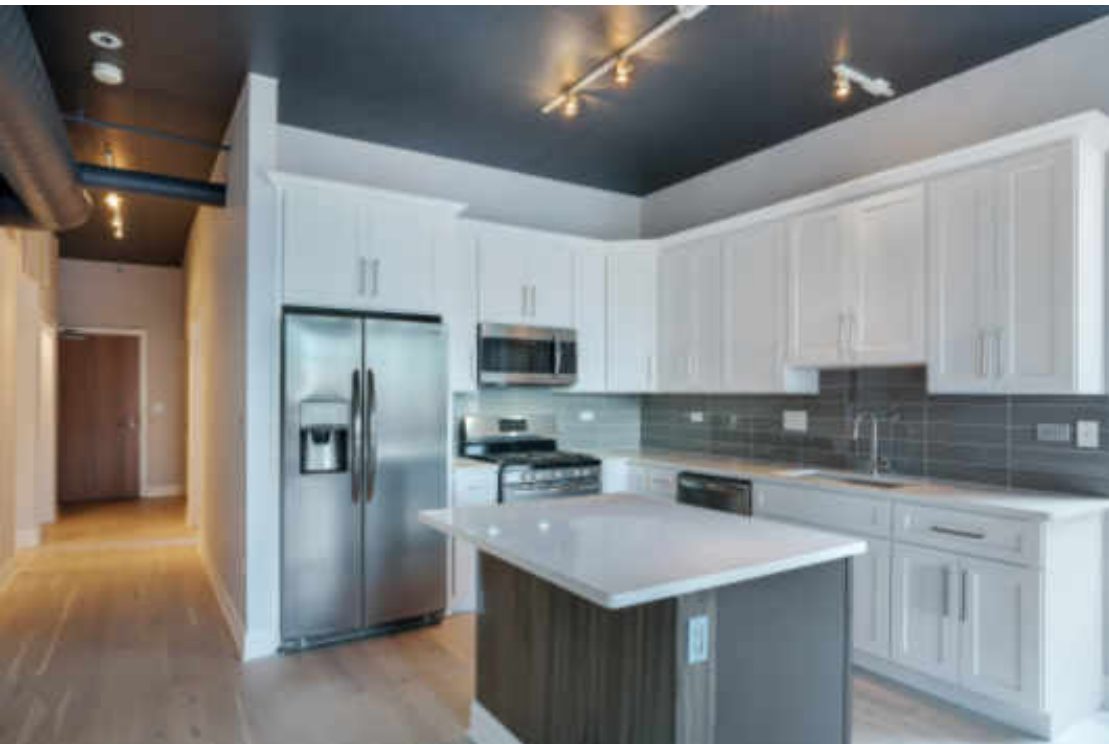
ROOM DIMENSIONS
LIVING/DINING COMBO : 21' × 14'
KITCHEN : 10' × 13'
MASTER BEDROOM : 14' × 12'
SECOND BEDROOM : 12' × 11'
DEN : 9' × 8'
BALCONY : 28' × 5'

2 BEDROOM
2 BATH
TAXES: 5705
ASSESSMENTS: 481

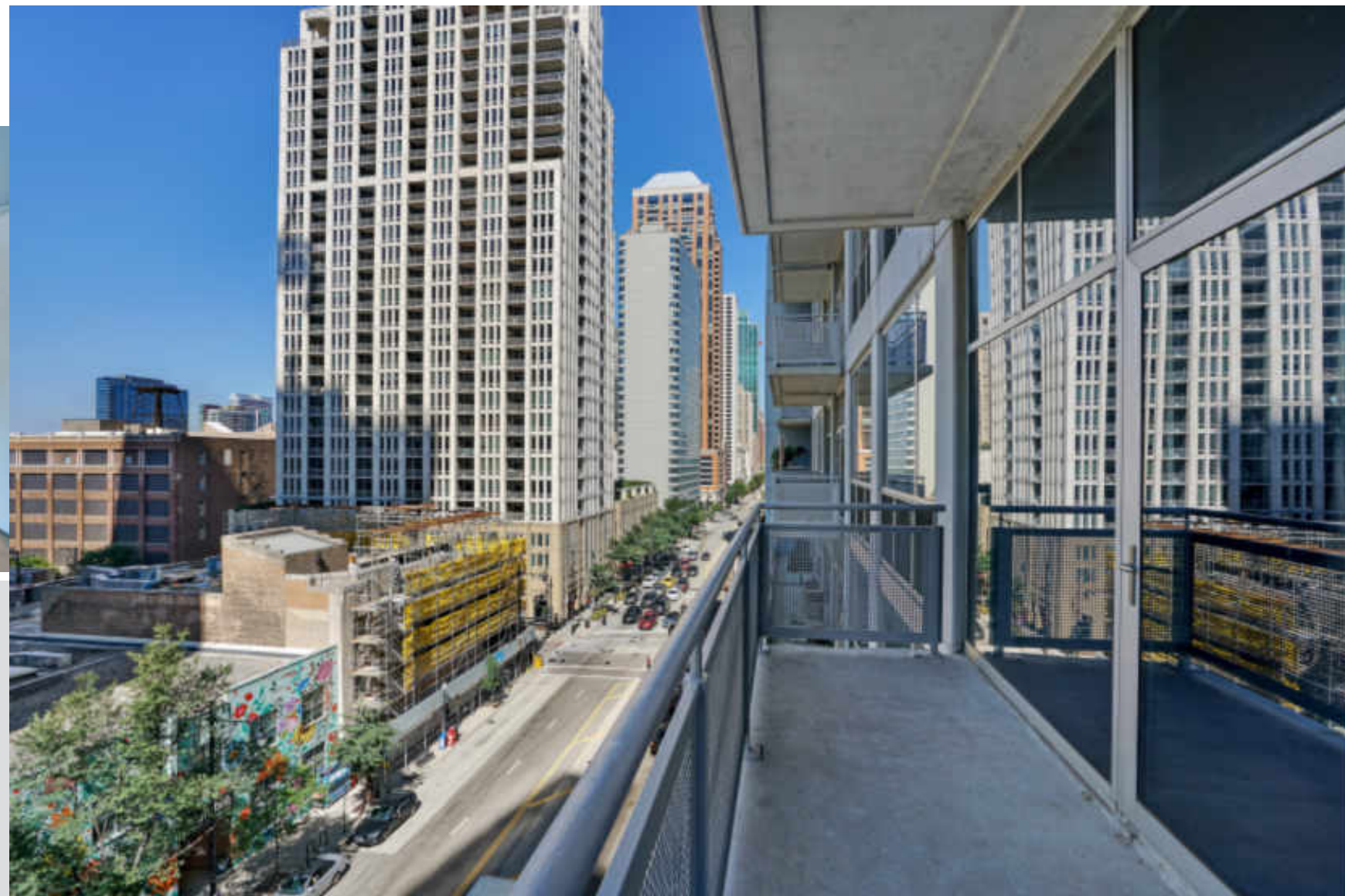
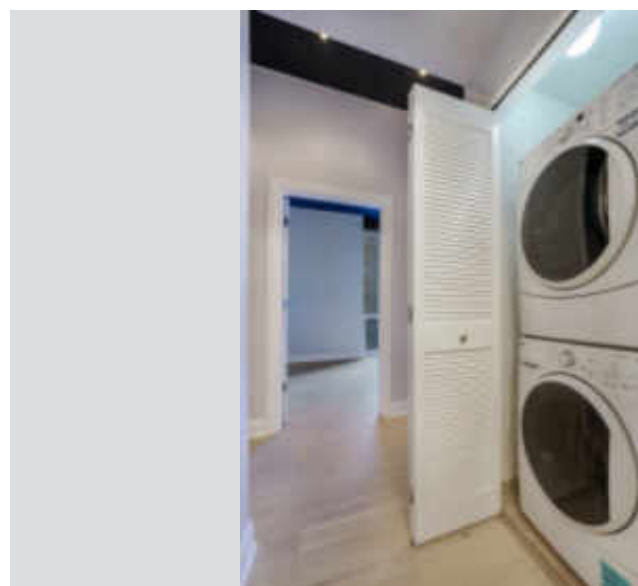
MUSEUM PARK: BRAND NEW RENOVATION! 2 BEDROOM + DEN, 2 BATHROOM CORNER UNIT WITH WRAP AROUND BALCONY! THIS 1336 SQ FT CONDO HAS BEEN FULLY RENOVATED FROM TOP TO BOTTOM! BE THE FIRST TO ENJOY THE BRAND NEW WHITE KITCHEN WITH CROWN MOLDING, BRAND NEW STAINLESS STEEL APPLIANCES, KITCHEN ISLAND, NEW COUNTERTOPS, BACKSPLASH AND MORE! LIGHT OAK FINISH WOOD FLOORING IS FOUND THROUGHOUT THE HOME. MASTER SUITE OFFERS VIEWS OVERLOOKING MICHIGAN AVENUE, SEPARATE TUB AND SHOWER, DOUBLE SINKS AND BRAND NEW VANITY, LIGHT FIXTURE & TILE FLOORING! DEN AND SECOND BEDROOM ARE FULLY ENCLOSED! 2ND BEDROOM HAS LARGE FLOOR TO CEILING WINDOWS! 2 PARKING SPOTS ARE AVAILABLE TO PURCHASE FOR \$30,000 EACH. BUILDING FEATURES 24 HOUR DOORMAN, FITNESS CENTER AND ON-SITE MANAGEMENT. CLOSE TO PUBLIC TRANSIT, SHOPPING, RESTAURANTS, MUSEUM CAMPUS, GRANT PARK, LAKE MICHIGAN AND MORE!



PHOTOGRAPHY BY VHT STUDIOS







This image shows a blank sheet of white paper with horizontal ruling lines. The lines are evenly spaced and run across the width of the page. There are no margins, text, or other markings on the paper.



ASHLEA HOLLAND

(312) 256-3734

AHOLLAND@ATPROPERTIES.COM

Ah
ASHLEAholland

@properties®

All specifications, features, designs, price, assessments, taxes and materials are subject to change without notice. Depicted floor plans and architectural renderings are only an artist's impression.

