

13097 LAUREL GLEN COURT #202

PALOS HEIGHTS





ROOM DIMENSIONS

LIVING ROOM : 24' × 16'

DINING ROOM : 14' × 10'

KITCHEN : 18' × 12'

PRIMARY BEDROOM : 18' × 15'

SECOND BEDROOM : 15' × 10'

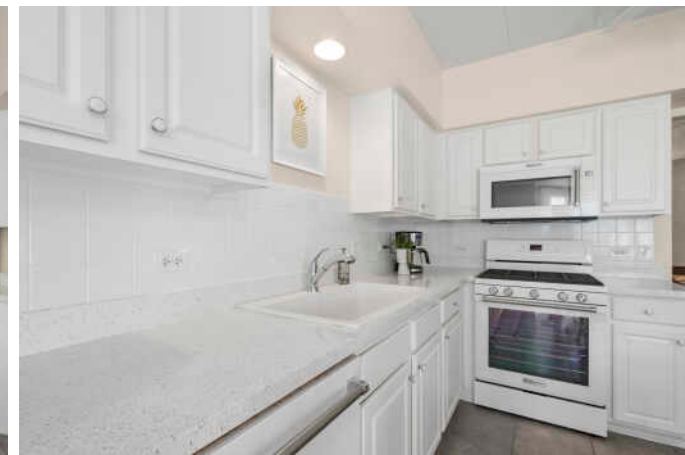
2 BEDROOM

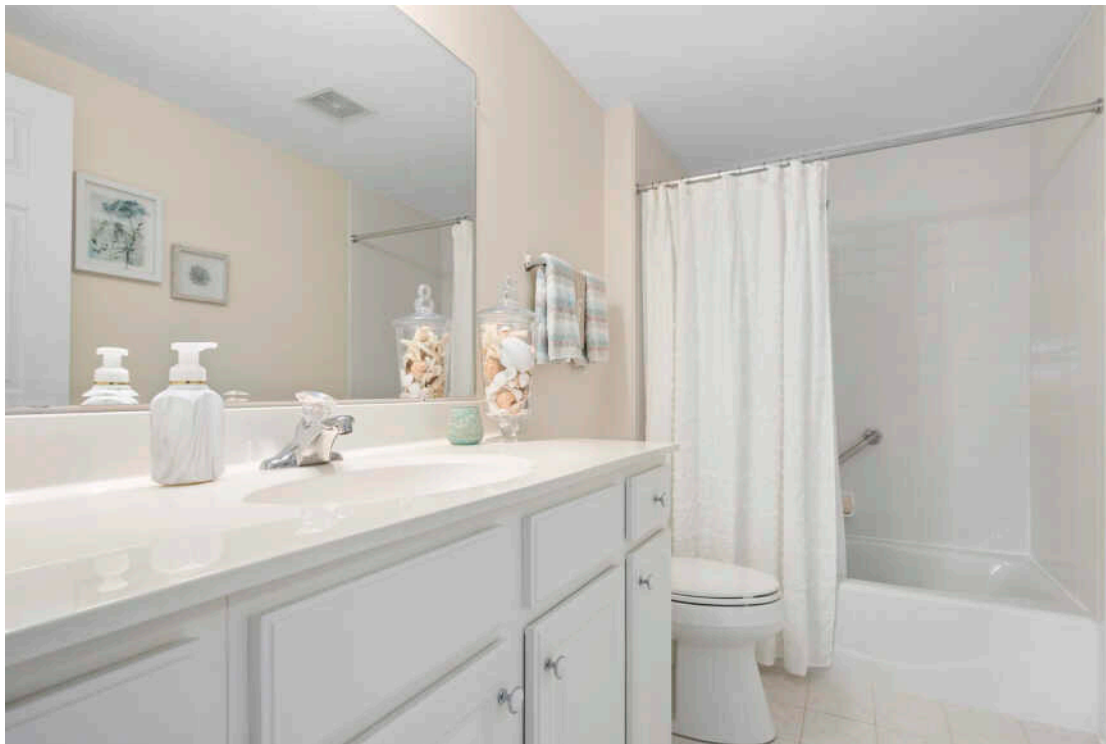
2 BATH

TAXES: \$4,854

ASSESSMENTS: \$382 / MONTH

Welcome to this GORGEOUS and EXTREMELY Well-Maintained 2nd floor condo located in the Laurel Glen subdivision of Palos Heights. This Inviting Home features an abundance of Natural Light and a Spacious Layout. Formal Dining Room with Tray Ceiling. Eat-In Kitchen with White Cabinetry, Backsplash, Appliances and Countertops. Kitchen provides Direct Access to your Private Balcony-perfect for Outdoor Relaxation. The Primary Suite offers Two Walk-In Closets and an Ensuite Full Bath with Dual Vanity, Walk-In Shower, and Linen Closet. A Generously Sized 2nd Bedroom and Full bath provide additional comfort and flexibility. Convenience is enhanced by an In-Unit Laundry with Washer and Dryer included. This Well-Constructed, Flexicore building ensures Quiet Living! One Heated Indoor Parking space plus an Additional Storage Locker are included. Elevator Building! Recent improvements include New Light Fixtures (2022), New Roof (2022) and HVAC (2024). This unit is PERFECTION - don't miss it!







PALOS HEIGHTS IS A NATURE LOVER'S DREAM.

Not only is the city home to the Lake Katherine Nature Center & Botanic Garden, where locals and visitors take in the area's beautiful scenery, but it's also close to Swallow Cliff - an 800-acre nature preserve - and numerous forest preserves.

As a tight-knit community, Palos Heights boasts many amenities and maintains a small-town feel. Community events are held year-round and include the Southwest Half Marathon, an indoor and outdoor farmers market, the annual Classic Car Show, and an Independence Day celebration and parade. Palos Heights also has programs such as Adopt-a-Pot - a community planting program that invites local businesses and residents to sponsor a pot or help plant flowers.

With a train station along Metra's SouthWest Service line, Palos Heights offers transportation to Chicago's Union Station. Major highways and interstates such as I-294 and I-57 are also located nearby.



NOTES _____



MOLLY MANN

708.774.4672

708.971.0060

MOLLYMANN@ATPROPERTIES.COM

MOLLYMANNHOMES.COM

molly  mann



CHRISTIE'S
INTERNATIONAL REAL ESTATE