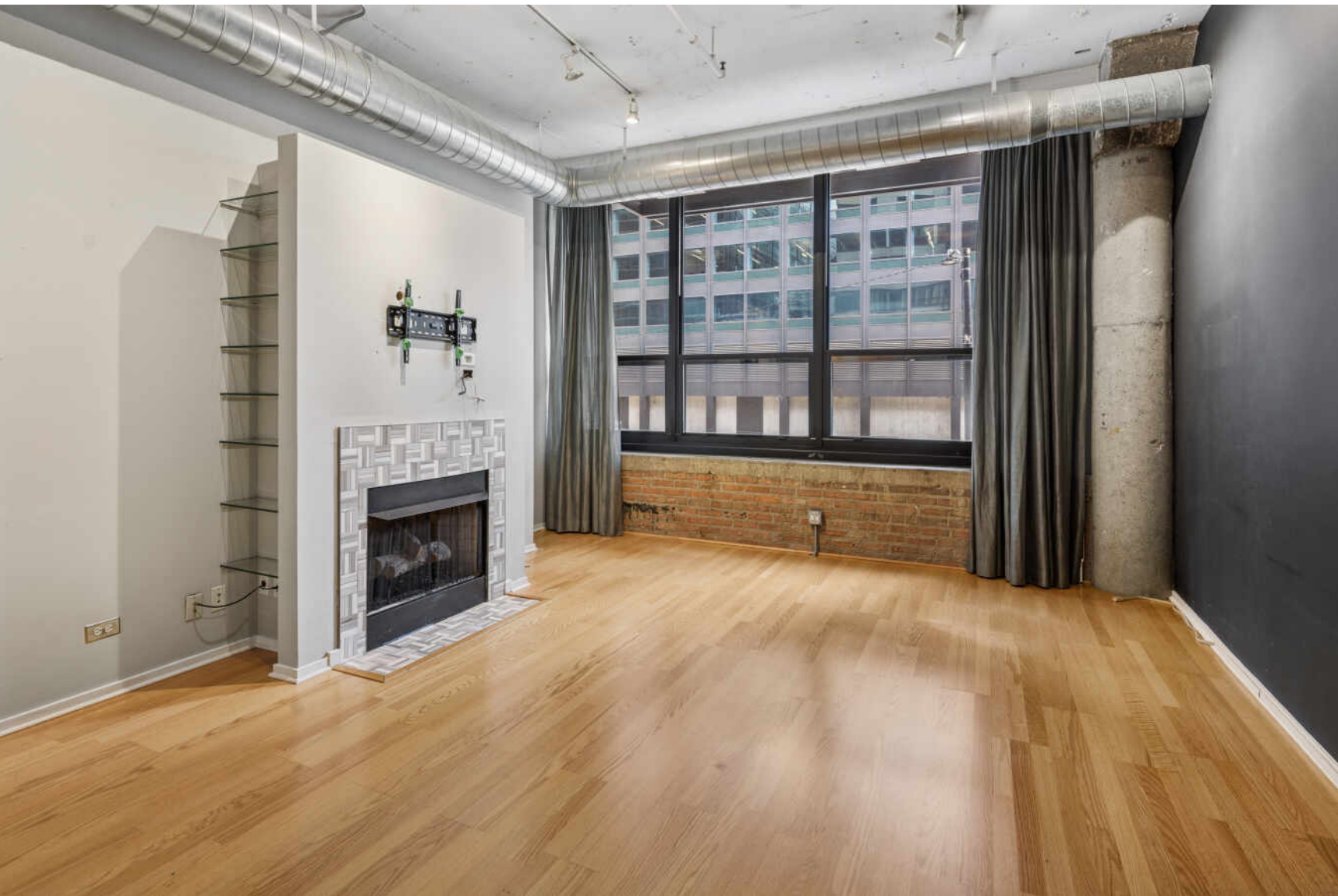


130 S CANAL STREET #216

WEST LOOP GATE





ROOM DIMENSIONS

LIVING ROOM : 22' × 16'

KITCHEN : 14' × 9'

PRIMARY BEDROOM : 16' × 13'

1 BEDROOM

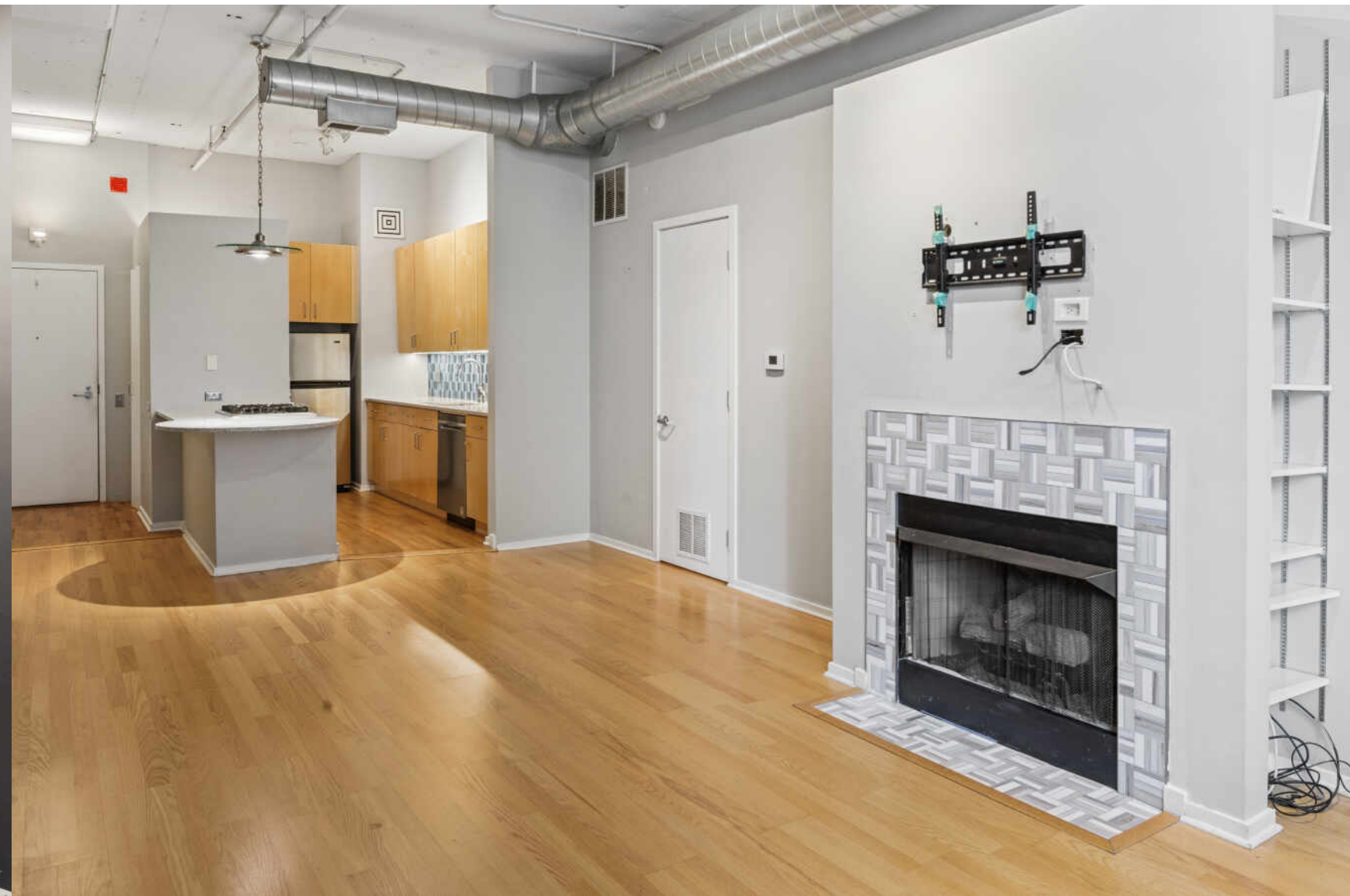
1 BATH

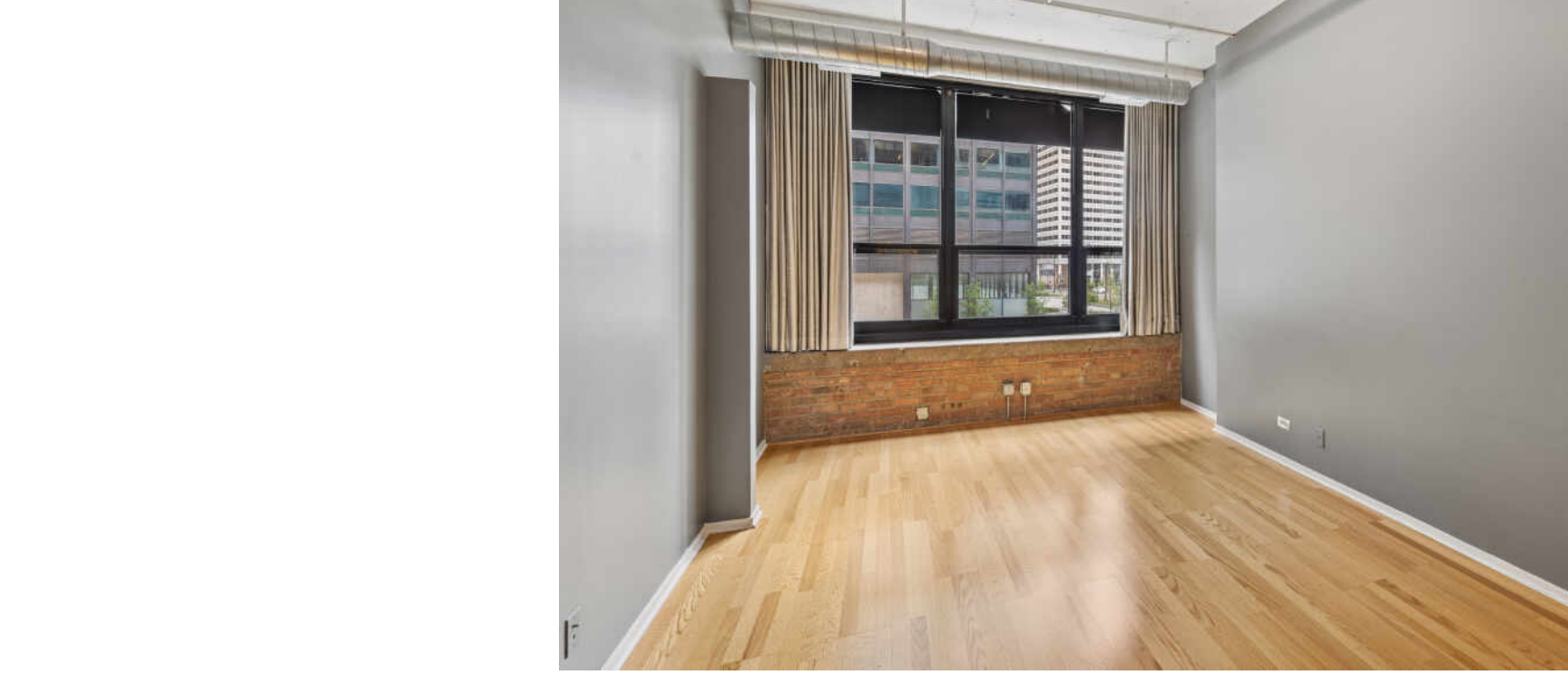
TAXES: \$5,416

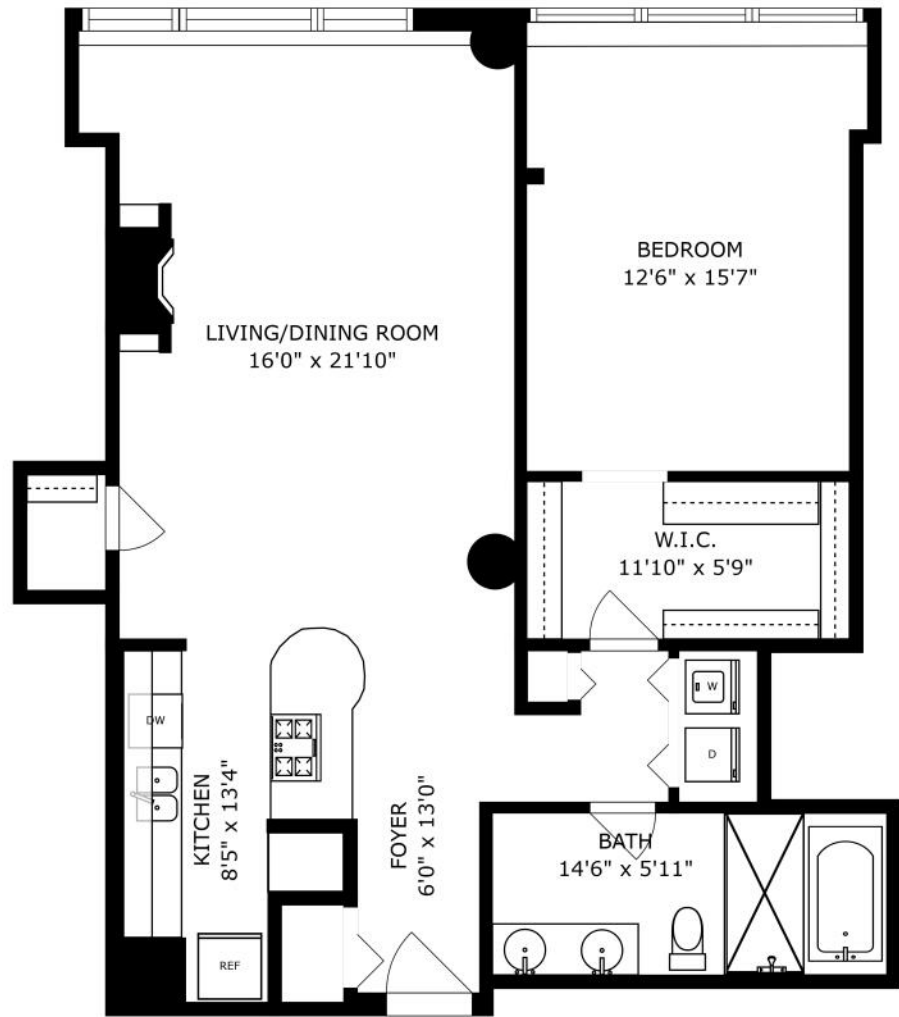
ASSESSMENTS: \$803 / MONTH

METROPOLITAN PLACE

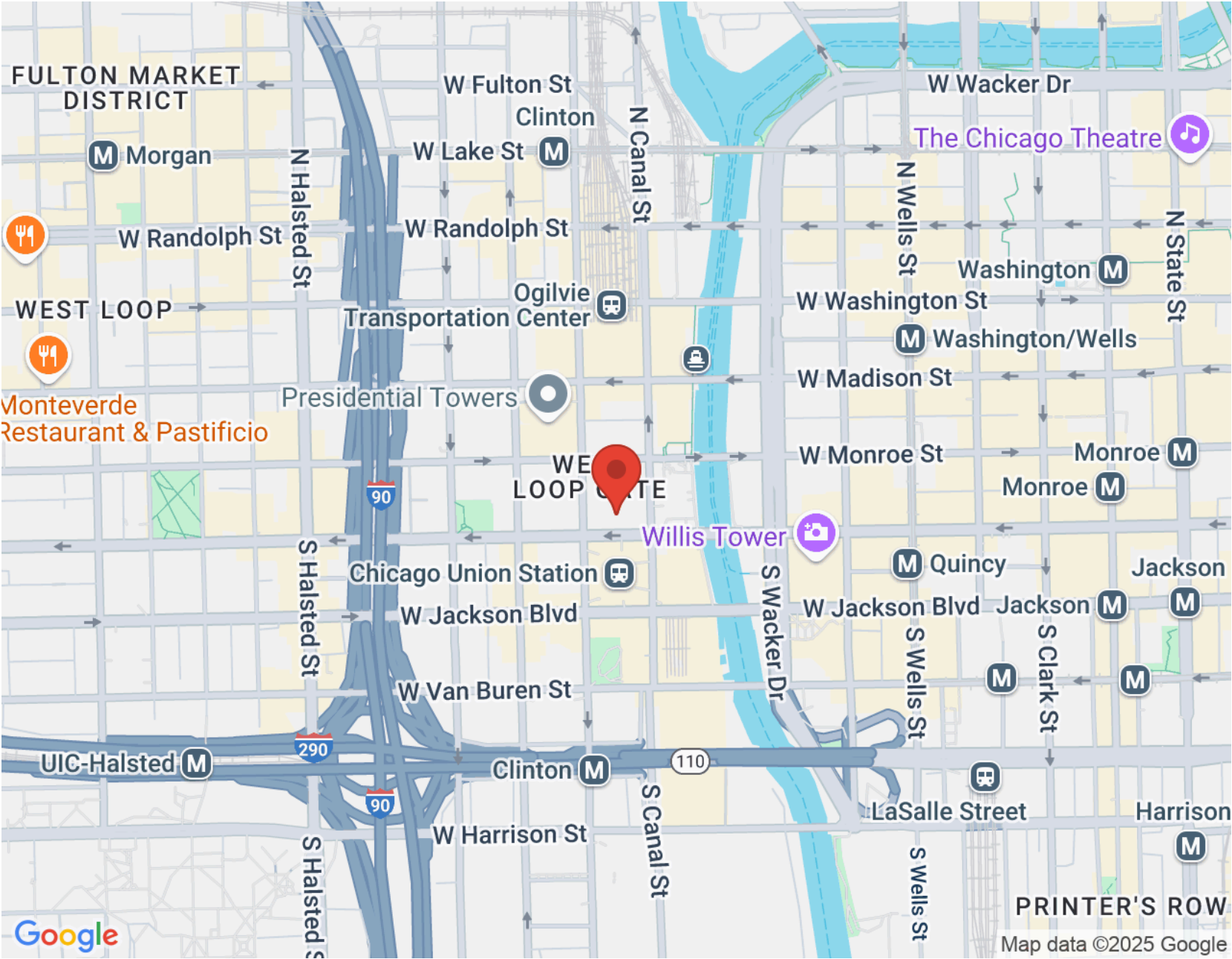
Spacious 1 Bed / 1 Bath Loft in Prime Downtown/West Loop Location - Formerly the Historic Florsheim Shoe Factory. Step into this stunning 1,030 sq. ft. loft, the largest one-bedroom floor plan in the building. Offering generous room sizes and stylish industrial charm. Enjoy hardwood floors throughout, including the fully enclosed bedroom featuring a walk-in closet. The open-concept kitchen is perfect for entertaining, equipped with stainless steel appliances, granite counters, and 42" upper cabinets. The upgraded bathroom boasts a sleek full-height glass shower door. Additional highlights include soaring 11'7" ceilings, in-unit laundry with a full-size washer and dryer, and bright east-facing windows that flood the space with natural light. Exterior storage cage & Heated garage parking space (#225) is included.







SIZES AND DIMENSIONS ARE APPROXIMATE, ACTUAL MAY VARY.



NOTES _____



CHRISTINE HANCOCK

(312) 296-9300

CHANCOCK@ATPROPERTIES.COM

CHRISTINEHANCOCK.COM

@THEHANCOCKGROUP



All specifications, features, designs, price, assessments, taxes and materials are subject to change without notice. Depicted floor plans and architectural renderings are only an artist's impression.

