

**1310 MILTON LANE**  
SCHAUMBURG





#### ROOM DIMENSIONS

LIVING/DINING ROOM : 16' × 16'

KITCHEN : 18' × 10'

FAMILY ROOM : 18' × 10'

MASTER BEDROOM : 14' × 10'

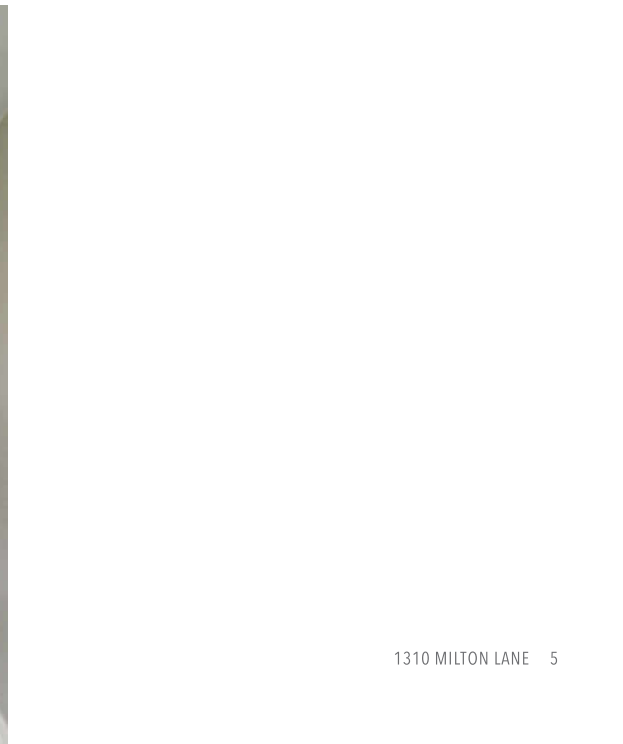
SECOND BEDROOM : 13' × 10'

THIRD BEDROOM : 9' × 9'

MUDROOM/PANTRY : 7' × 5'

- This beautiful ranch was rehabbed and expanded by the owners for their own enjoyment and never occupied.
- The remodeled kitchen features Quartz counters with an expansive island/breakfast bar, under cabinet lighting, new stainless appliances and disposal, white custom cabinets with soft close drawers/doors, a designer subway tile backsplash and recessed ceiling lighting.
- Both bathrooms have been completely remodeled and feature tile and fixtures from Studio 41.
- The family room has a charming red brick wood-burning fireplace with a gas starter.
- The entire home has been freshly painted and new Karndean simulated wood flooring with cork backing has been installed throughout.
- The home has new exterior doors, windows (2018), and siding (2020).
- The furnace and water heater were new in 2018.
- The expansive backyard is fenced and has a fire-pit, patio and a 2.5 car garage with a newer door and opener.
- Conveniently situated blocks from Nathan Hale Elementary and Jane Addams Junior High, one mile from the Schaumburg Metra Station and a half mile from the 390 Expressway (Elgin O'Hare).



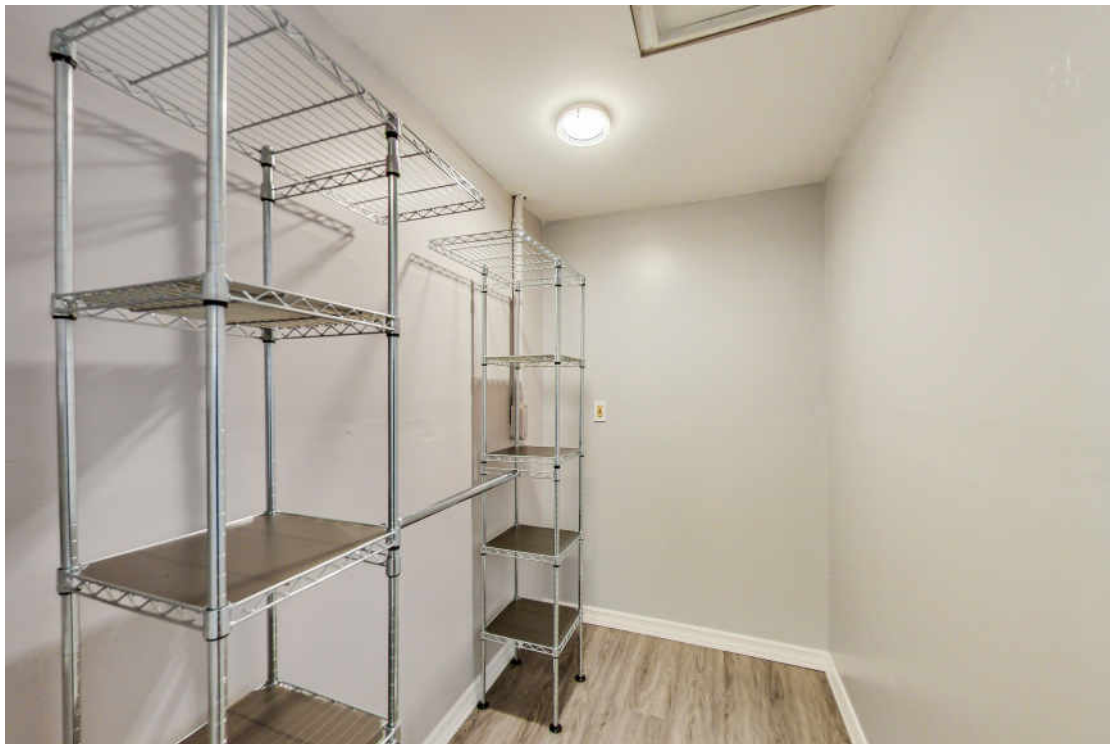














## RAY MILLER

(773) 330-1519

RMILLER@ATPROPERTIES.COM

RAYMILLERREALTY.COM



1310MILTON.INFO