

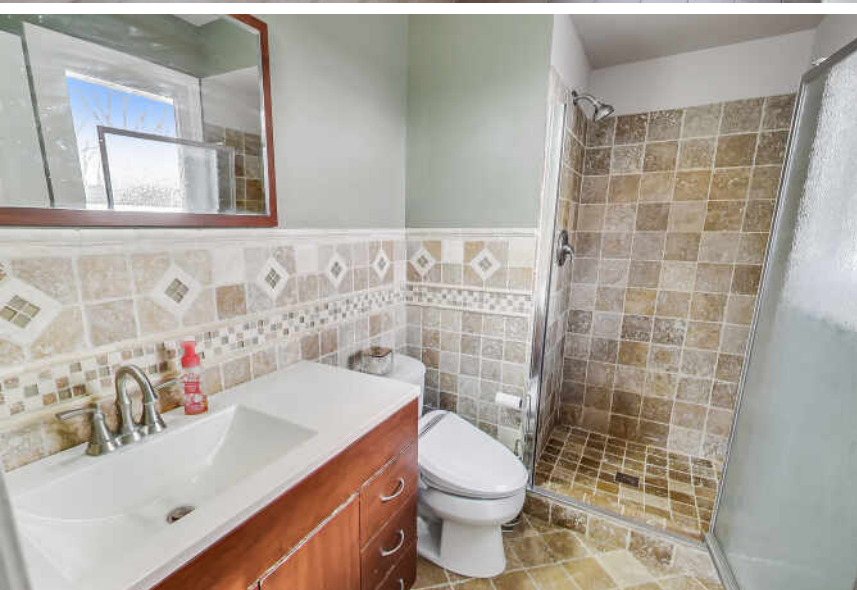
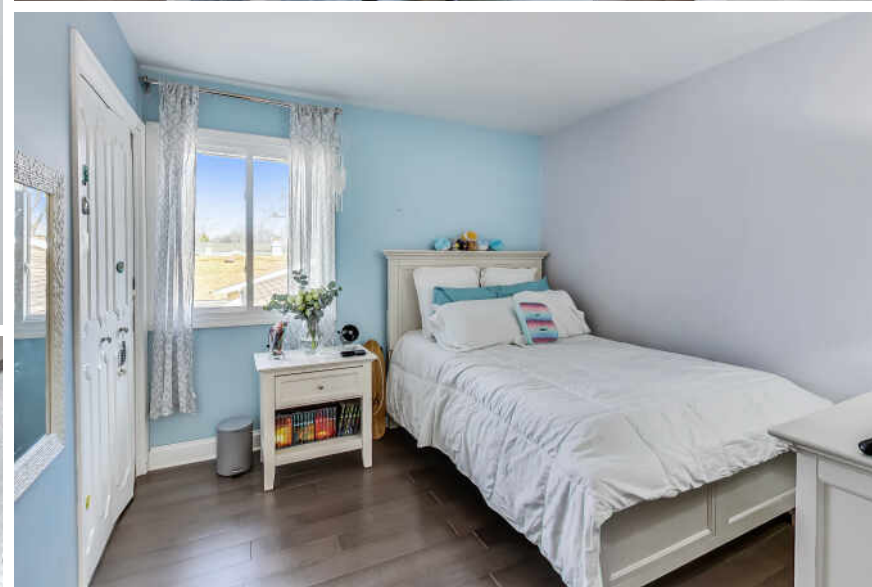
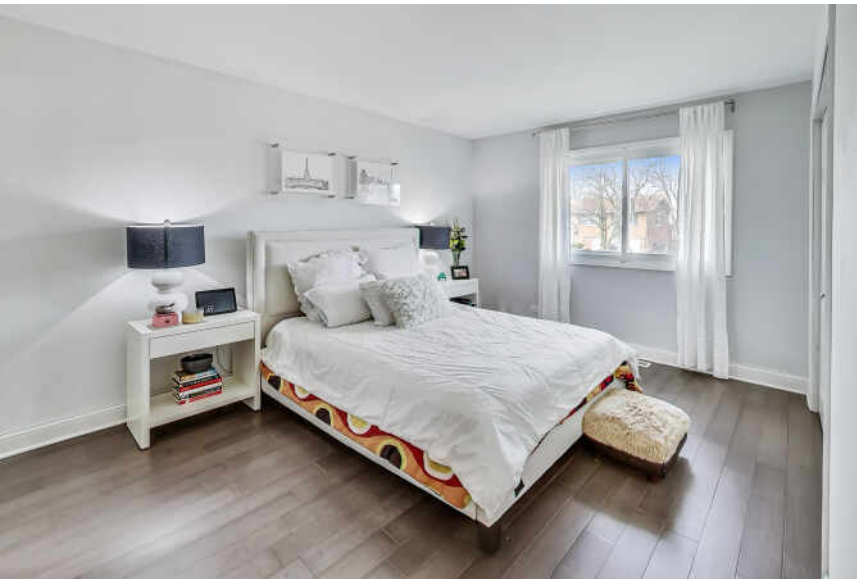
1315 BLAIR LANE
HOFFMAN ESTATES

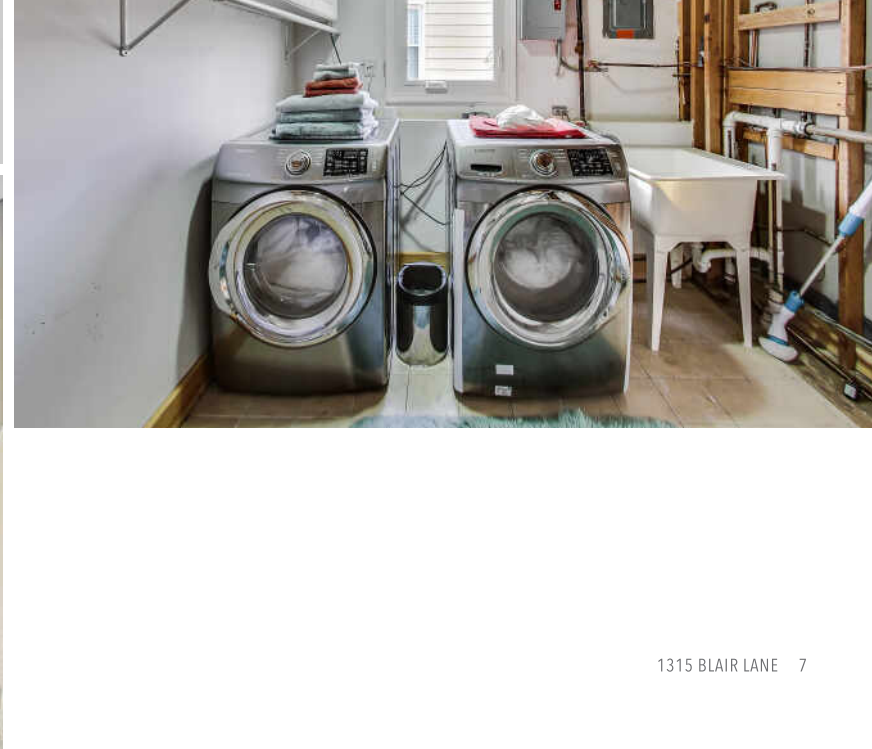
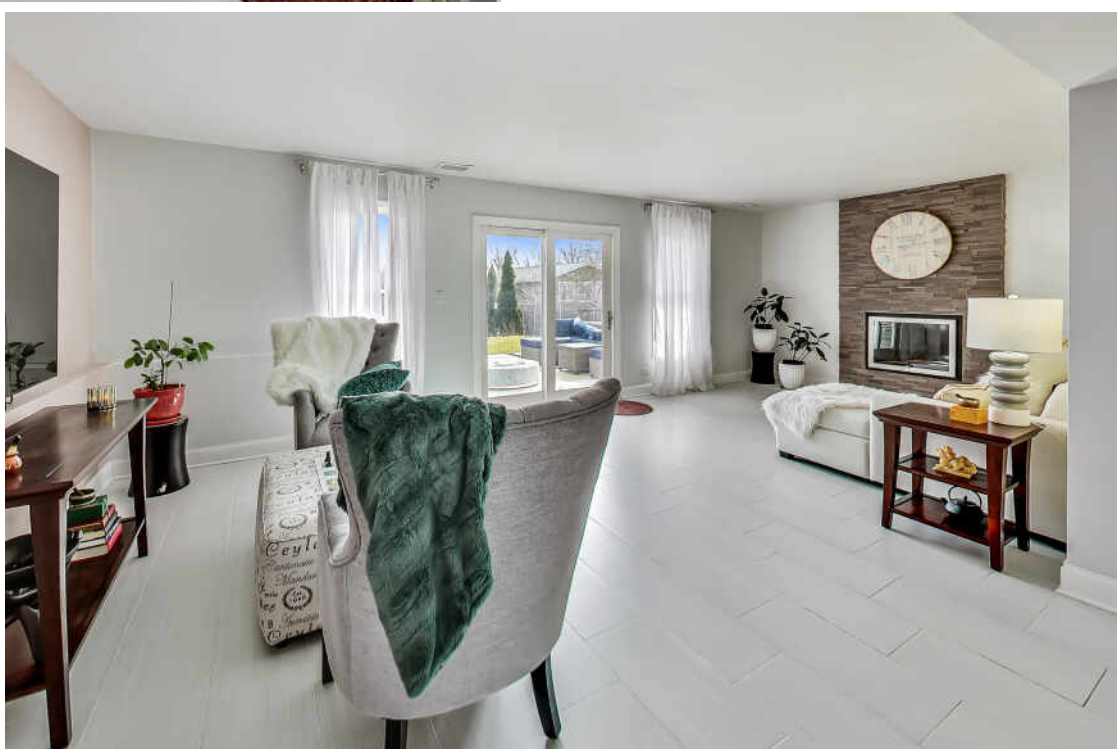
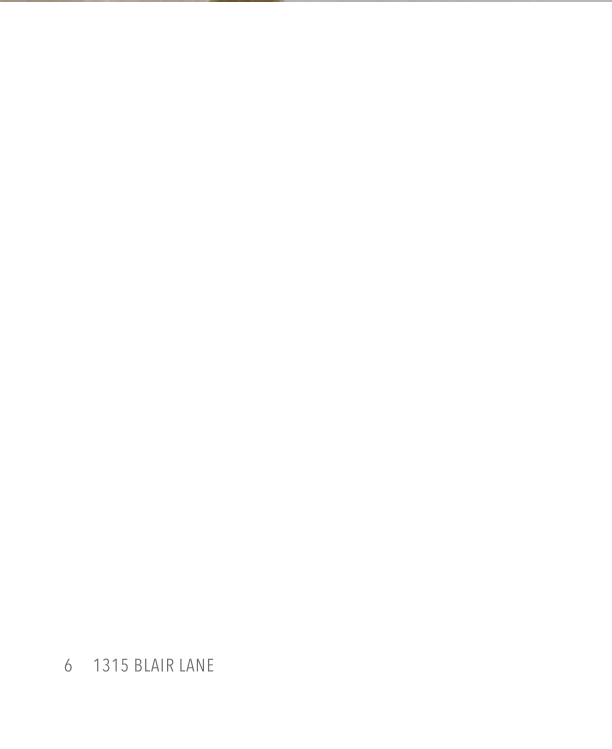
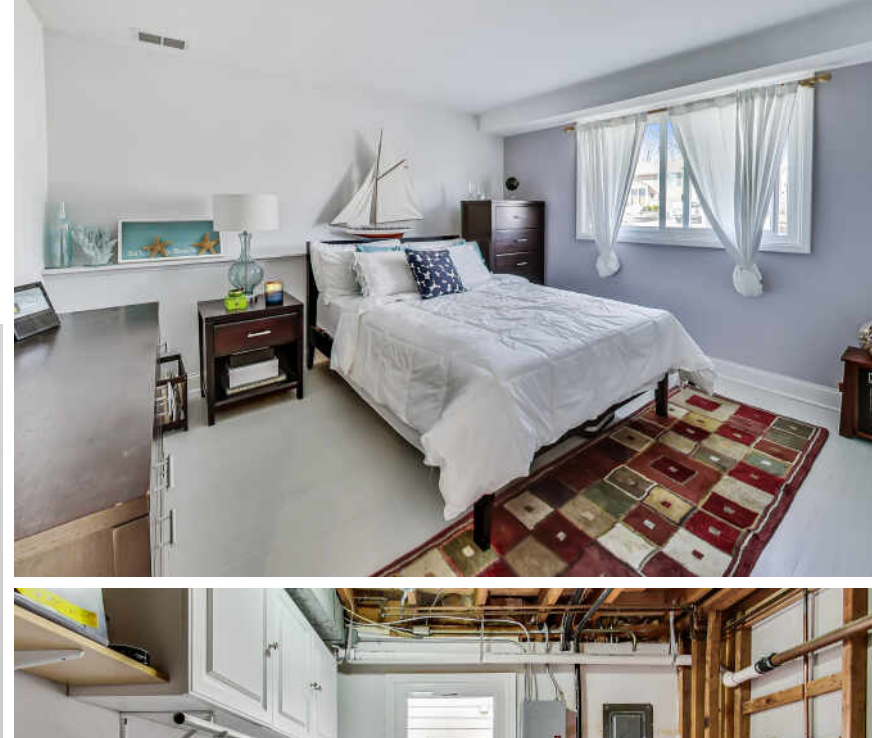
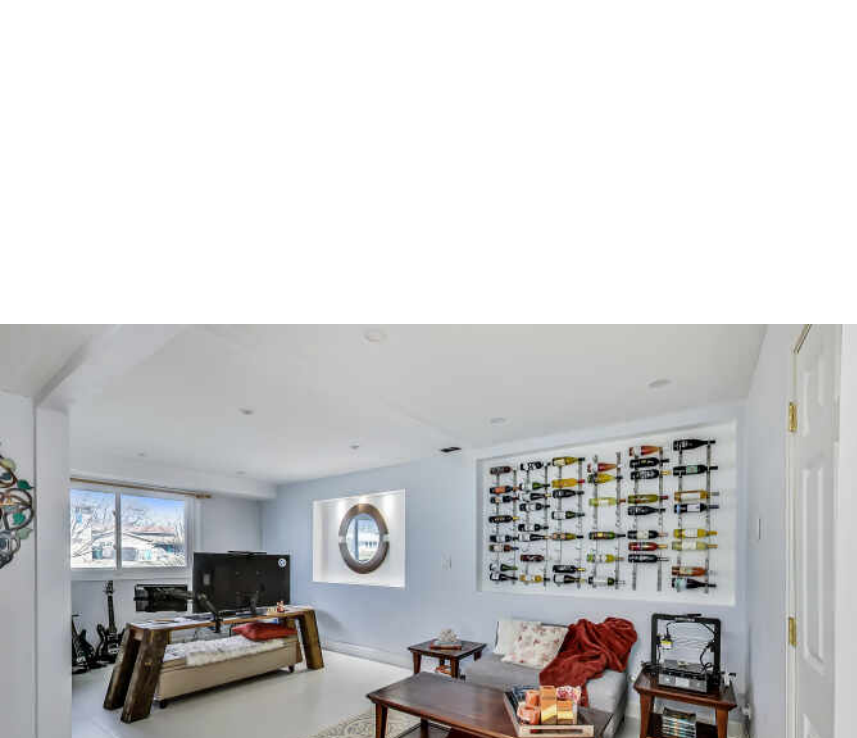


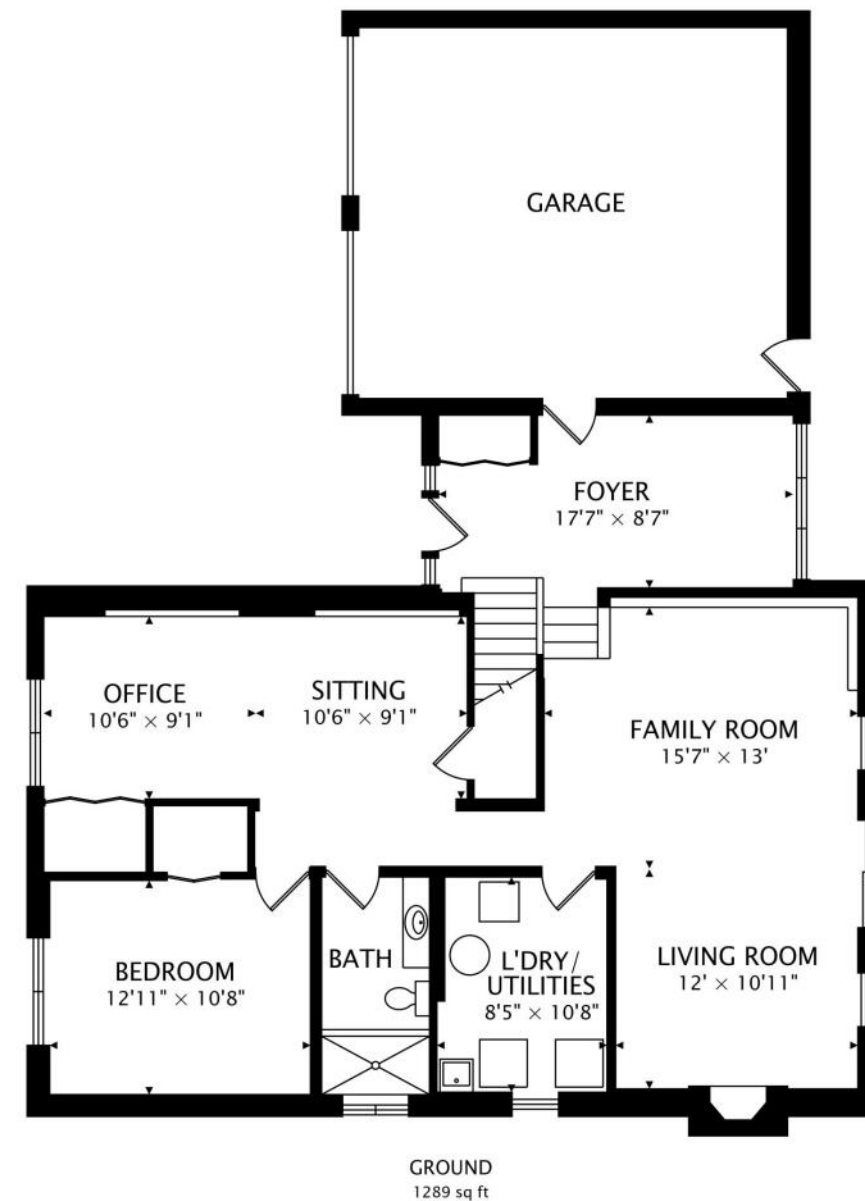
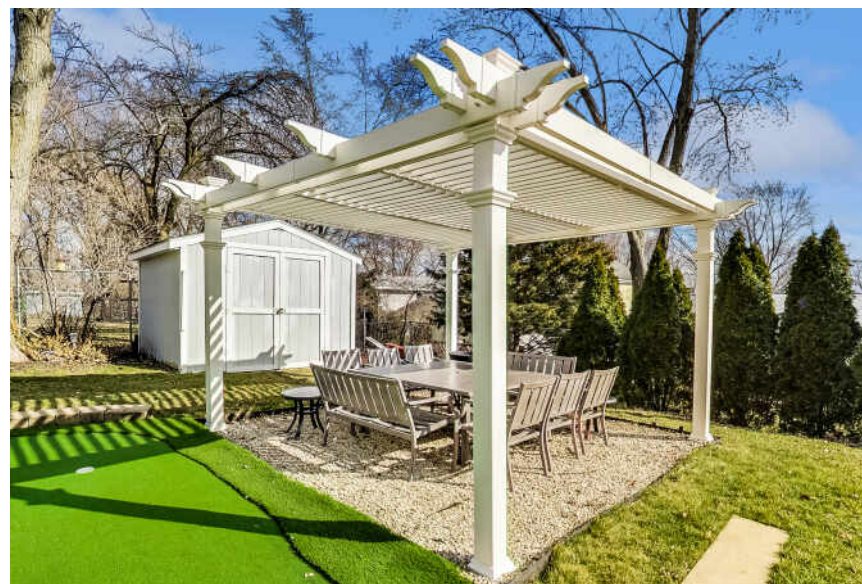
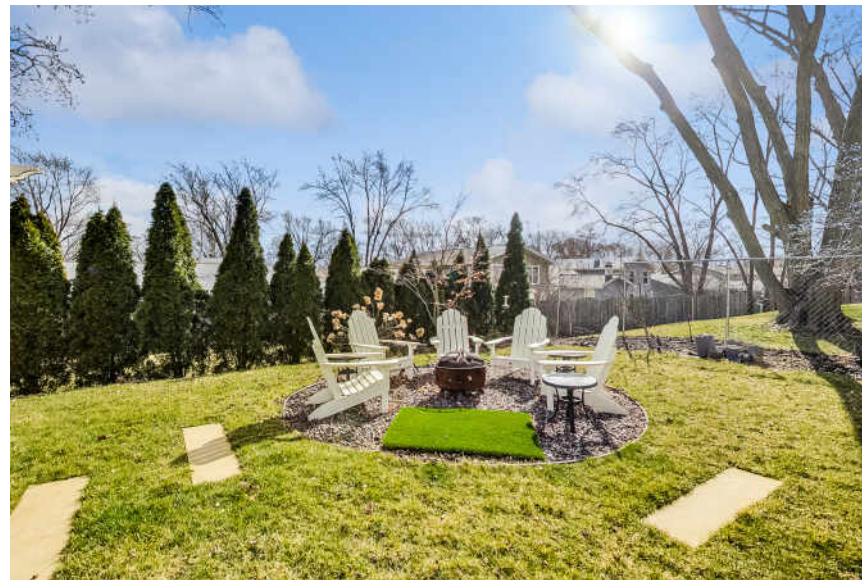


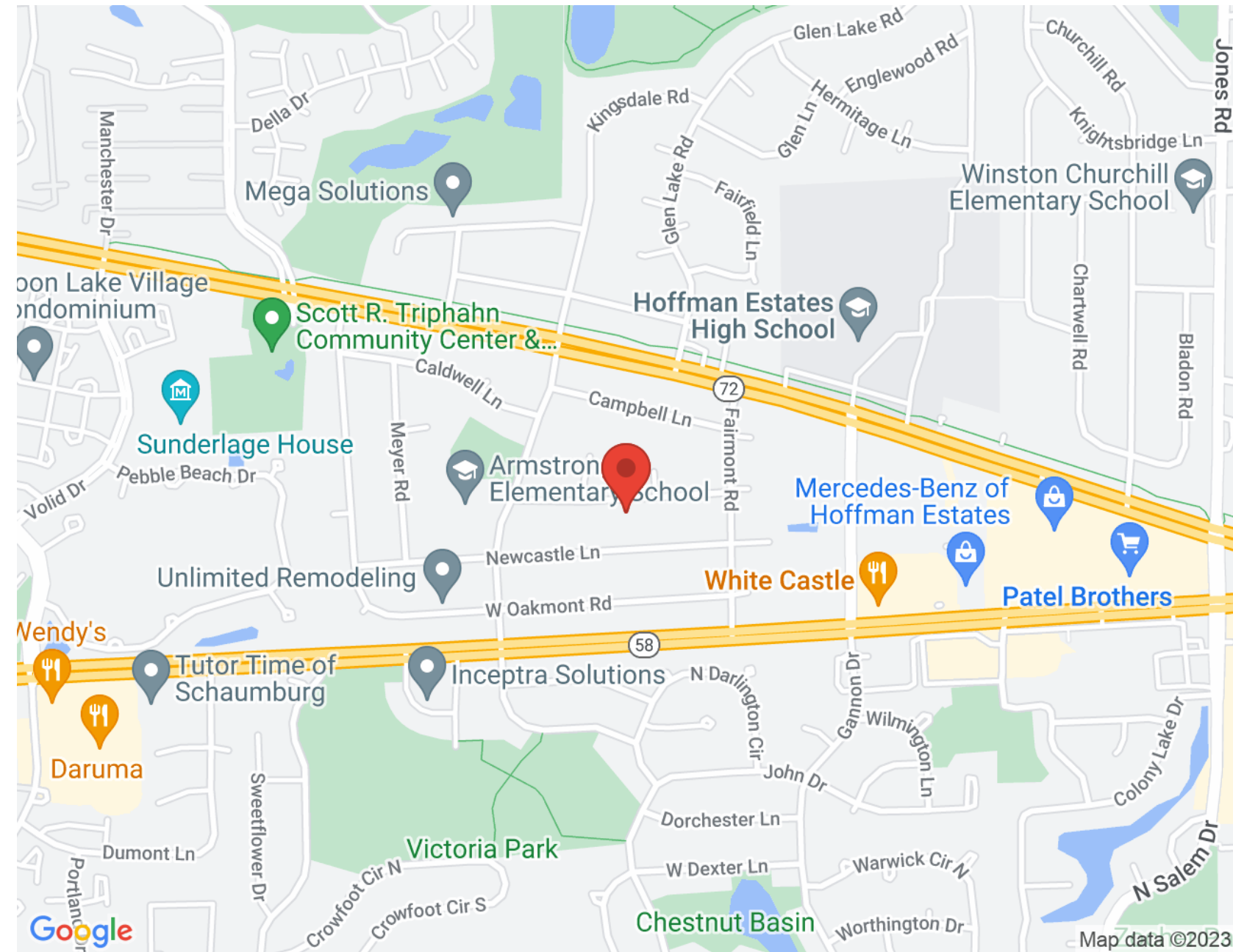
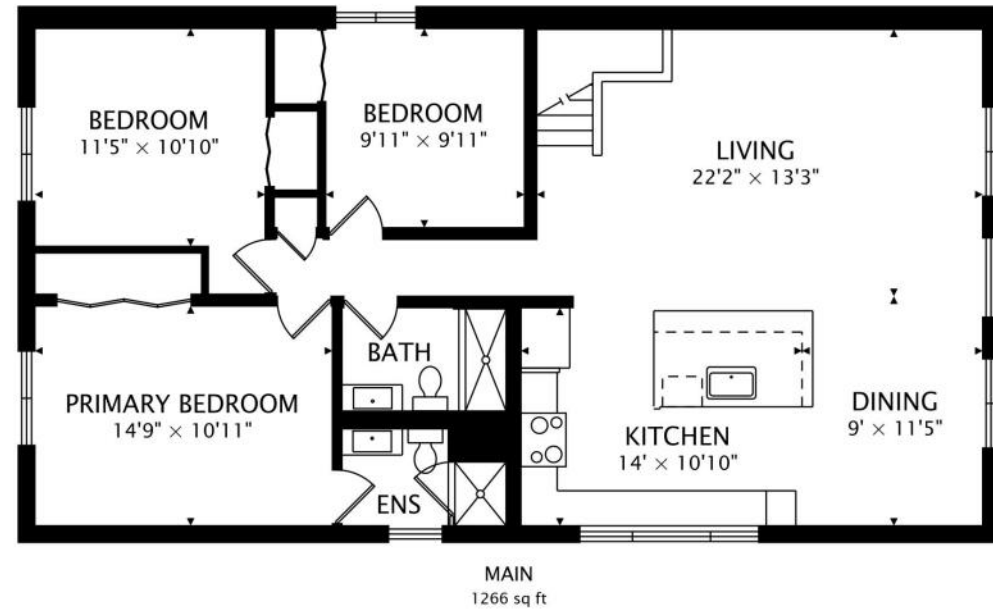
STUNNING TRI-LEVEL IN THE HIGHLY DESIRED HIGH POINT SUBDIVISION

Over 2,500sf of meticulously updated living space includes 4 spacious bedrooms, 3 beautiful recently-remodeled full bathrooms, heated 2-car garage with infrared sauna and a large office easily deconverted for a fifth bedroom if desired. If you love to cook and entertain, this recently transformed kitchen is for you with grey quartz countertops and massive island, American-made shaker cabinets with chrome hardware and glass backsplash, stainless appliances with a smart refrigerator, range hood, pot-filler and wine fridge. The adjacent dining and living space round out this idyllic designer open concept kitchen. The all-hardwood main level also includes the primary bedroom with ensuite bathroom plus two other bedrooms and an updated second full bathroom. The luxuriously-tiled lower level includes the fourth bedroom, a recently-updated bathroom, an office, laundry room and so much more. There's plenty more space for relaxation on the lower level including a large family room and second living room with a wood-burning fireplace...all of which walks out to a manicured backyard with every inch designed and utilized. Your hosted gatherings are sure to be a big hit with the outdoor speakers, in-ground lighting, putting green, fire pit and louvered pergola to ensure everyone's comfortable and entertained. These long-time owners leave this warm home truly move-in ready.











JEREMY BUTTERFIELD

312.545.8588

JBUTTERFIELD@ATPROPERTIES.COM



CHRISTIE'S
INTERNATIONAL REAL ESTATE

1315BLAIR.INFO

All specifications, features, designs, price, assessments, taxes and materials are subject to change without notice. Depicted floor plans and architectural renderings are only an artist's impression.

