

1316 MAPLE AVENUE #E1
EVANSTON





ROOM DIMENSIONS

LIVING ROOM : 15' × 17'

DINING ROOM : 11' × 15'

KITCHEN : 8' × 12'

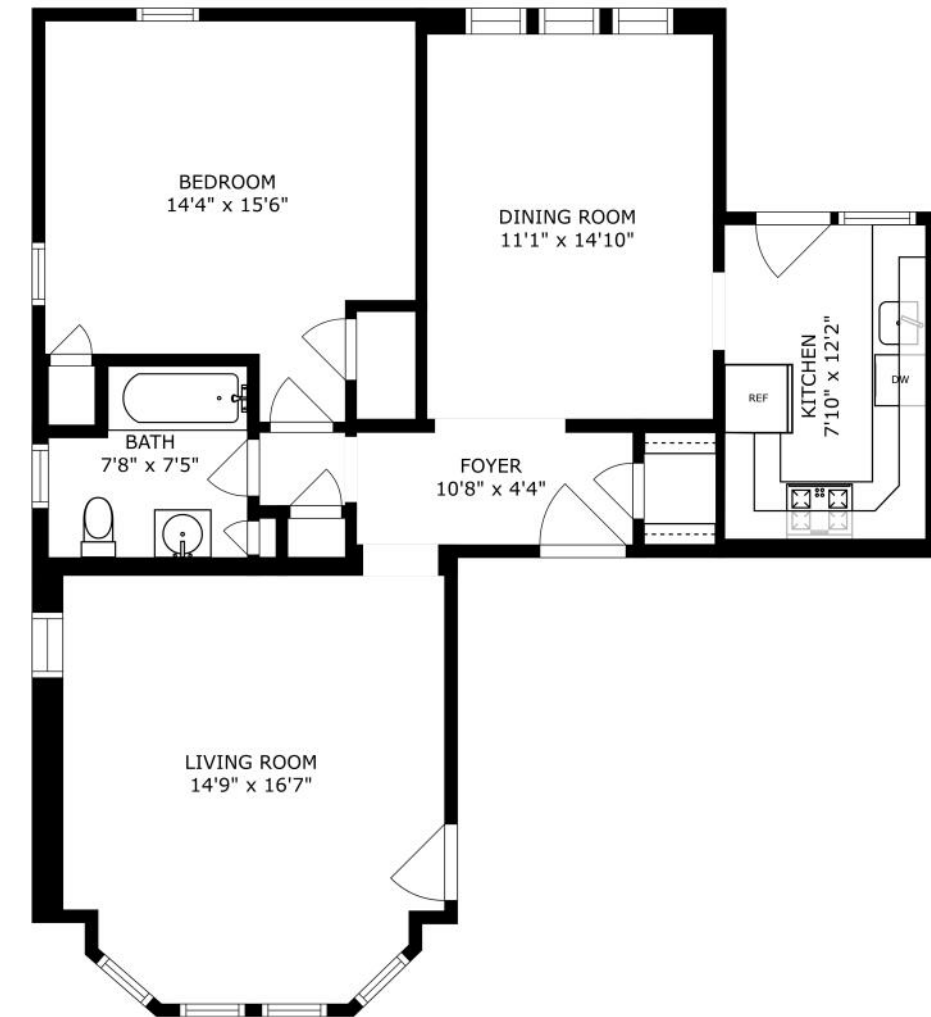
PRIMARY BEDROOM : 14' × 16'

TAXES: \$2,738

ASSESSMENTS: \$342 / MONTH

This one bedroom, one bath condo is located in one of THE most beautiful buildings in Evanston. This greystone beauty was registered as a Historic Landmark since 1984. As you enter, you will find an ornate grand lobby, and just south is the stunning private patio. This elevated first floor unit has hardwood floors throughout and sizeable rooms. The living room looks out onto the private patio and has a huge storage closet, and the formal dining room has plenty of table space. The bathroom has the original ceramic tile and pedestal sink and is in immaculate condition. New owner may install in-unit laundry. This pet-friendly building is located very close the downtown Evanston shops, restaurants, and transportation.





SIZES AND DIMENSIONS ARE APPROXIMATE, ACTUAL MAY VARY.



LOCATED JUST NORTH OF CHICAGO, **EVANSTON** OFFERS A BEAUTIFUL NATURAL SETTING ON THE SHORES OF LAKE MICHIGAN.

Its historic homes, tree-lined streets, and sprawling beaches may be the first things that catch your eye, but there's a lot more to love here.

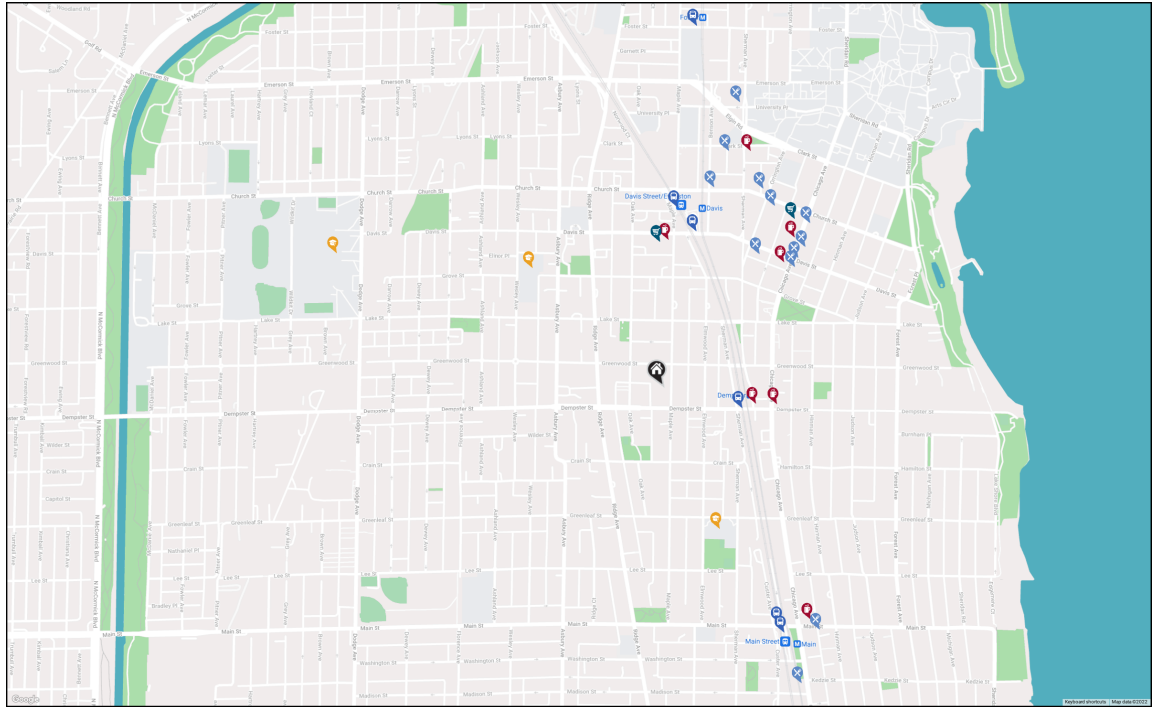
Home to world-class Northwestern University, Evanston residents have plenty to cheer about - from watching Big Ten sports and enjoying cultural events to exploring academic pursuits.

The thriving downtown district includes bookstores, boutiques, galleries, theaters, and restaurants that attract city dwellers and suburbanites alike, while outdoor enthusiasts enjoy the many nature paths, parks, and public beaches the community offers.

Evanston boasts a variety of homes in a wide range of styles and price points. You can find everything from stately historic mansions along the lakefront and well-maintained single-family homes on tree-lined streets, to contemporary townhomes and newer high-rises that are near local shops and restaurants.

Residents have several convenient options to commute to downtown Chicago including the CTA's Purple Line and bus routes, as well as Pace bus routes and three Metra stations





RESTAURANTS

Koi Fine Asian Cuisine & Lounge
624 DAVIS STREET, 0.4 MI

Joy Yee Noodle
533 DAVIS STREET, 0.4 MI

Giordano's
1527 CHICAGO AVENUE, 0.4 MI

Prairie Moon
1635 CHICAGO AVENUE, 0.5 MI

Le Peep
827 CHURCH STREET, 0.5 MI

Farmhouse Evanston
703 CHURCH STREET, 0.5 MI

Tapas Barcelona
1615 CHICAGO AVENUE, 0.5 MI

Mt. Everest Restaurant
630 CHURCH STREET, 0.5 MI

Buffalo Joe's - Clark St.
812 CLARK STREET, 0.6 MI

Evanston - Lou Malnati's Pizzeria
1850 SHERMAN AVENUE, 0.7 MI

Lucky Platter
514 MAIN STREET, 0.7 MI

Firehouse Grill
750 CHICAGO AVENUE, 0.8 MI

COFFEE SHOPS

Bagel Art Cafe
615 DEMPSTER STREET, 0.2 MI

Bennison's Bakery
1000 DAVIS STREET, 0.3 MI

FRÍO Gelato - Evanston
1301 CHICAGO AVENUE, 0.3 MI

Pâtisserie Coralie
600 DAVIS STREET, 0.4 MI

Peet's Coffee
1622 CHICAGO AVENUE, 0.5 MI

Starbucks
519 MAIN STREET, 0.6 MI

Einstein Bros. Bagels
1745 SHERMAN AVENUE, 0.6 MI

SHOPPING

Lemoi Ace Hardware
1008 DAVIS STREET, 0.3 MI

Whole Foods Market
1640 CHICAGO AVENUE, 0.5 MI

SCHOOLS

Nichols Middle School
800 GREENLEAF ST, 0.3 MI

Dewey Elementary School
1551 WESLEY AVE, 0.4 MI

Evanston Twp High School
1600 DODGE AVE, 0.8 MI

TRANSIT

Dempster
CTA - PURPLE LINE, 0.2 MI

Davis St
METRA - UNION PACIFIC NORTH, 0.4 MI

Davis
CTA - PURPLE LINE, 0.4 MI

Main St
METRA - UNION PACIFIC NORTH, 0.6 MI

Main
CTA - PURPLE LINE, 0.6 MI

Foster
CTA - PURPLE LINE, 0.8 MI

NOTES



AMY BERNSTEIN

(773) 294-3862

AMYBERNSTEIN@ATPROPERTIES.COM

WWW.AMYBERNSTEINHOMES.COM

**THE AMY
BERNSTEIN TEAM**



CHRISTIE'S
INTERNATIONAL REAL ESTATE

1316MAPLEAVENUEE1.INFO