

**1319 ORRINGTON COURT #M**  
WHEELING

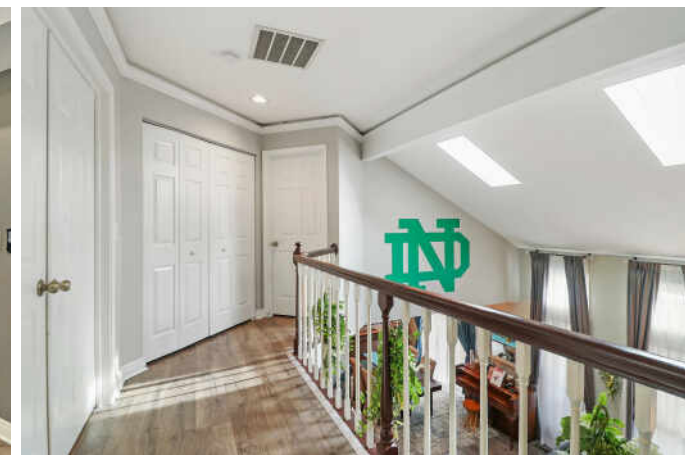




TAXES: \$8,136  
ASSESSMENTS: \$480 / MONTH

Fantastic & spacious 2 bedroom, 2.5 bathrooms & finished basement townhouse in beautiful Arlington Club subdivision. Conveniences abound in this great unit such as all new stainless steel appliances, Proecolife reverse osmosis drinking system, new Pergo waterproof flooring, granite countertops, new Lennox gas furnace, new gas water heater, new triple-pane windows, 1st floor windows are steel screens, automated security blinds and many more. Spacious open floor plan. Huge master suite with en-suite private bath. The 2nd bedroom also has its own bath. The finished basement has a family room, plenty of storage and a spacious laundry room with 2 sets of washers & dryers. (Stay with the property). There is also a setup to make a bathroom. Arlington Club is a 78 acre property. Residents enjoy maintenance free living with 2 swimming pools, club house, 18 acre park & 1.5 miles of walking paths. Close to schools, transportation, shopping & restaurants. Come open the door to the new year in your new home today!













**WHEELING IS A THRIVING COMMUNITY**  
CHARACTERIZED BY FRIENDLY LOCALS,  
GREAT PARKS, AND A BEAUTIFUL  
COMMUNITY.

Wheeling is a thriving community characterized by friendly locals, great parks, and a beautiful community.

One of the village's top attractions is Restaurant Row, which boasts upscale restaurants and some of the best eateries in the north suburbs along Milwaukee Avenue.

Throughout the year, community events bring neighbors together. The Lights Around Wheeling marks the start of the holiday season at Friendship Park, while the summertime Anniversary Parade celebrates Wheeling's 100-plus year history with a parade and concert in the park.

Existing and newly-constructed single-family homes, condominiums, and townhome developments make up the village, which is approximately 23 miles from downtown Chicago. Wheeling has easy access to Chicago and other surrounding suburbs via I-294, Illinois 53, U.S. 45, and Illinois 83. There is also commuter rail service to downtown Chicago, with Metra's North Central Service line providing transportation to Union Station.

Professional and recreational pilots take to Chicago Executive Airport, the third busiest airport in Illinois which is jointly owned by the City of Prospect Heights and the Village of Wheeling. The airport offers to take children between the ages of 8 and 17 on their first plane ride for free.



[illegible]



## SABINA WUNDERLICH

(773) 951-2867

847-381-0300

SABINAWUNDERLICH@ATPROPERTIES.COM



All specifications, features, designs, price, assessments, taxes and materials are subject to change without notice. Depicted floor plans and architectural renderings are only an artist's impression.

