

**131 INDIAN DRIVE**  
CLARENDON HILLS





#### ROOM DIMENSIONS

LIVING ROOM : 16' × 22'

KITCHEN : 12' × 12'

DINING AREA : 13' × 12'

PRIMARY BEDROOM : 15' × 16'

BEDROOM TWO : 9' × 14'

BEDROOM THREE : 11' × 10'

RECREATION ROOM : 27' × 26'

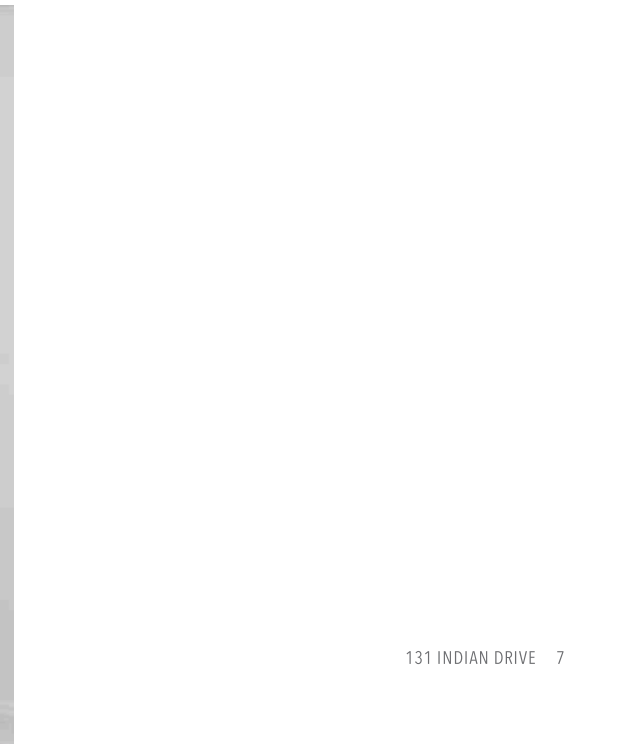
3 BEDROOM

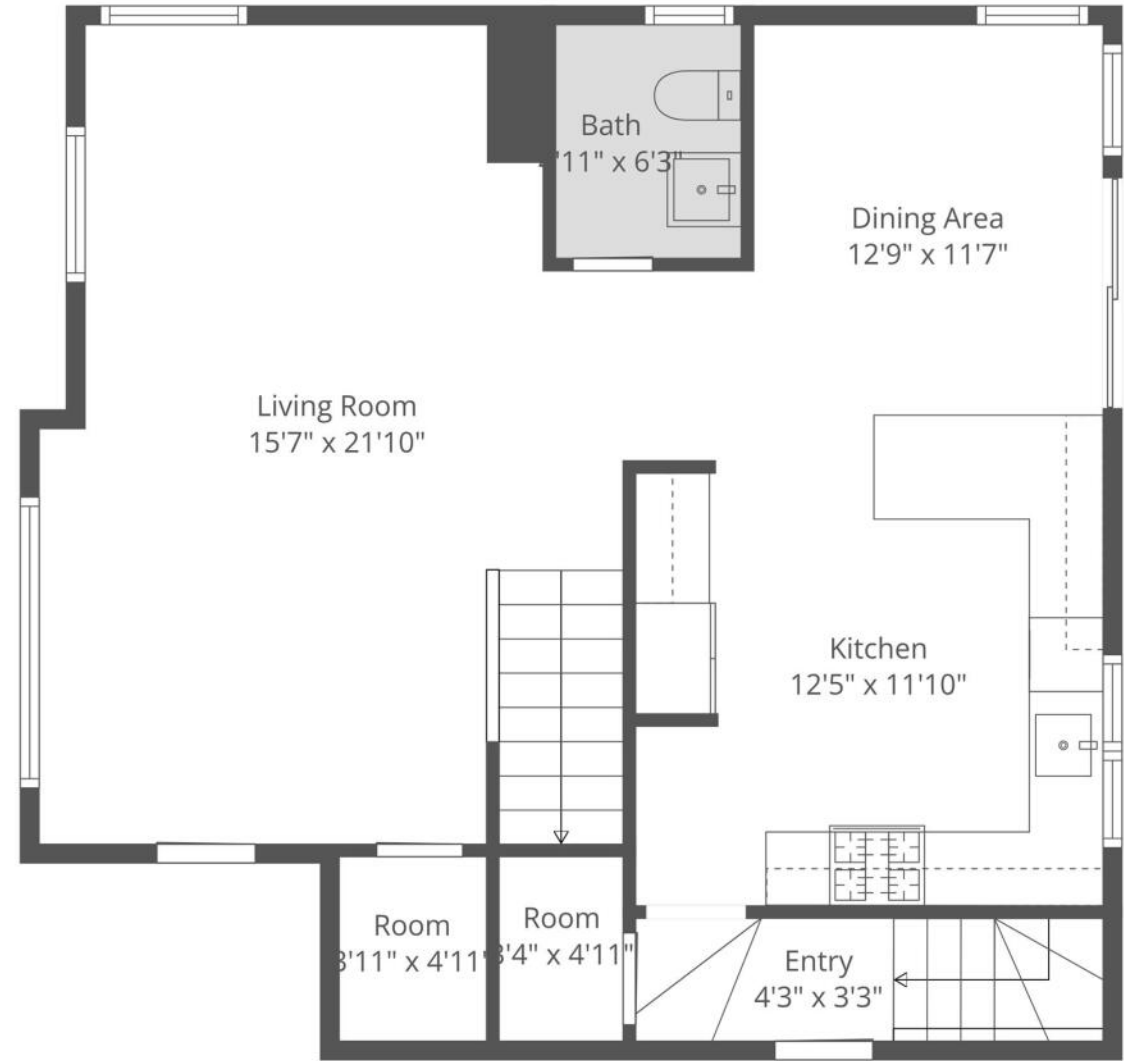
2.1 BATH

## THE PINNACLE OF TURNKEY LUXURY IN BLACKHAWK HEIGHTS

Just beautiful. This home transcends the standard "move-in ready" home, offering a level of perfection seldom found at this price point. Voluminous 9-foot ceilings span both first and second levels, creating an airy atmosphere. Fresh white kitchen with extra sunny east-facing breakfast room. The oversized primary suite serves as a sophisticated sanctuary. There's a crisp, super bright finished lower level. The Blackhawk Heights location offers unparalleled proximity to dining, shops and commuter rail. This is not merely a house, but a turnkey lifestyle.. Schedule your private tour to experience the most immaculate offering at this price point. Quick close is possible











KNOWN FOR ITS CURVED ROADS THAT WERE INFLUENCED BY FAMED LANDSCAPE ARCHITECT FREDERICK LAW OLMSTED, **CLARENDON HILLS** HAS A UNIQUE STREET PLAN THAT CONTOURS ITS BEAUTIFUL NATURAL LANDSCAPE

The rapidly-growing village has been named one of the best places to live in the Chicago area by *West Suburban Living* and today is home to more than 80 businesses. Eight parks spanning nearly 50 acres offer recreational activities, with amenities including baseball diamonds, soccer fields, basketball and tennis courts, trails, and areas for picnicking.

Once known as "Daisy Fields," Clarendon Hills celebrates its beginnings every June with Daisy Days and the annual Daisy Dash, consisting of a 5K run to benefit local charities.

Transportation is convenient for commuters with the Clarendon Hills Metra station, which provides service to Chicago and Aurora along the BNSF Railway.





## BRYAN BOMBA

(630) 286-9242

BRYAN@BRYANBOMBA.COM

WWW.HINSDALEAREAREALESTATE.COM

WWW.WHYHIREUS.COM

