

1321 TURNBERRY LANE, MUNDELEIN
HAMPTON RESERVE





ROOM DIMENSIONS

FOYER : 15' × 7'
 LIVING ROOM : 13' × 10'
 DINING ROOM : 18' × 11'
 KITCHEN : 18' × 16'
 FAMILY ROOM : 24' × 19'
 OFFICE : 14' × 11'
 LAUNDRY ROOM : 8' × 7'
 PRIMARY BEDROOM : 18' × 16'
 WALK IN CLOSET : 12' × 6'
 SECOND BEDROOM : 14' × 11'
 THIRD BEDROOM : 14' × 11'
 FOURTH BEDROOM : 13' × 12'
 RECREATION ROOM : 34' × 21'
 PLAY ROOM : 14' × 12'
 STORAGE : 38' × 18'

BEAUTIFUL INSIDE & OUT

Immaculate two-story home situated on a premium lot backing to a nature preserve in the Hampton Reserve subdivision. Enjoy the benefits of a truly well-maintained home and yard.

The two-story, center-entry, foyer is flanked by a formal living room & a formal dining room. Hand crafted custom millwork throughout includes cove molding, wainscoting, chair rails, decorative columns, window and door trim and more.

The expansive windows in the dramatic two-story family room take full advantage of the views of the nature preserve and has a fireplace with gas logs.

Adjacent is an open concept kitchen with center island breakfast bar, pantry, double oven, 42 inch cabinets, granite counter tops, and eating area with sliding glass door to the paver brick patio with an outdoor kitchen setup in the parklike backyard.

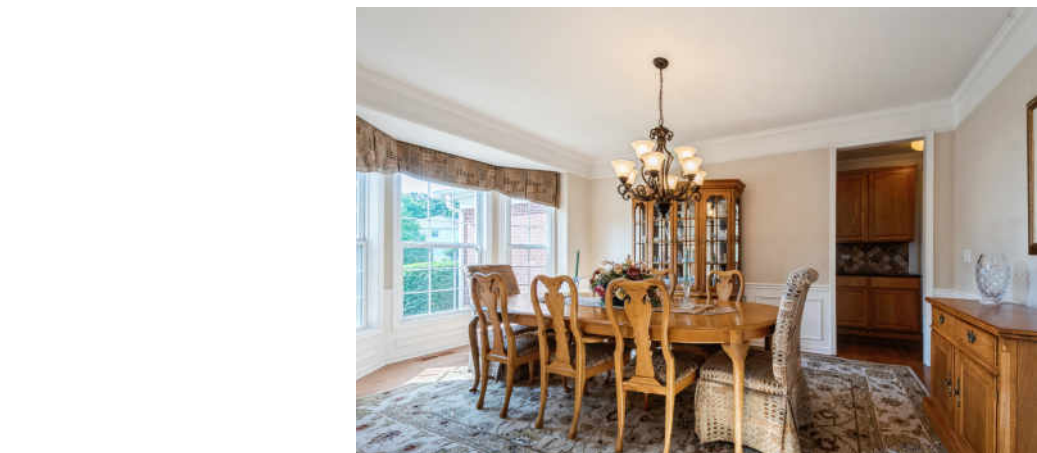
Amazing primary bedroom retreat with detailed tray ceiling and additional lighting. Recently remodeled bath with free standing therapeutic tub, wall mounted fireplace feature, separate glass enclosed shower, dual sink vanity with newly installed quartz counter top with stylish faucets and a great walk-in closet.

The second bedroom is ensuite and bedrooms three and four share a Jack-n-Jill bath.

The well thought out and tastefully finished basement has a custom-built bar complete with sink, dishwasher, beverage cooler and TV that stays. This is part of a large rec room with yet another fireplace.

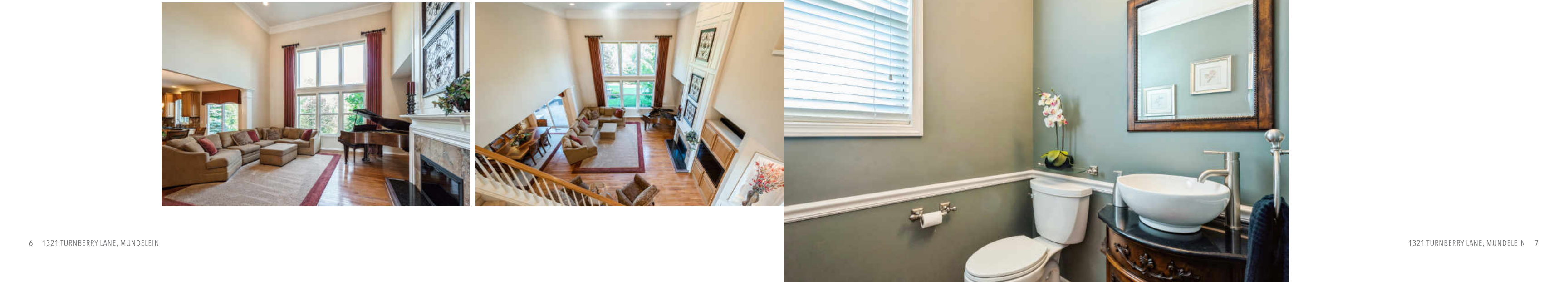
There is also a super functional play room with French doors, which could easily be converted to a bedroom, and a fourth full bath with heated floors plus there's plenty of additional storage and rough -in for another full bath.

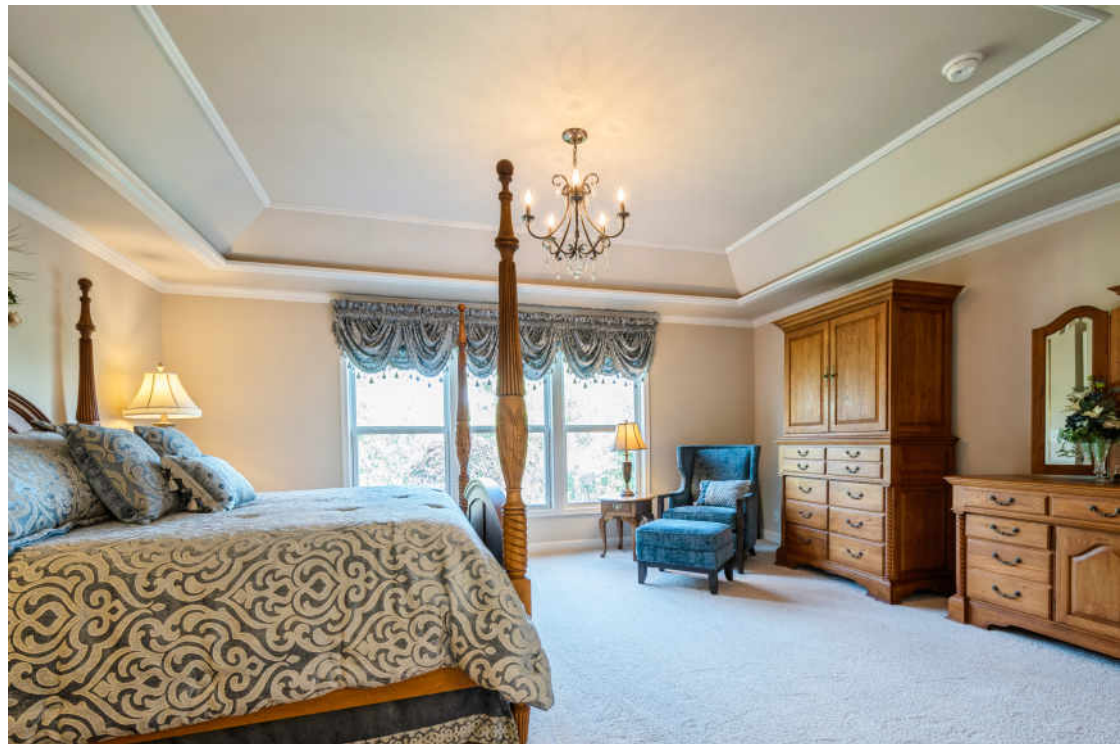
I almost forgot to mention the main floor office with adjacent powder room and the laundry/mud room with utility sink located near the access to the 3 car garage.

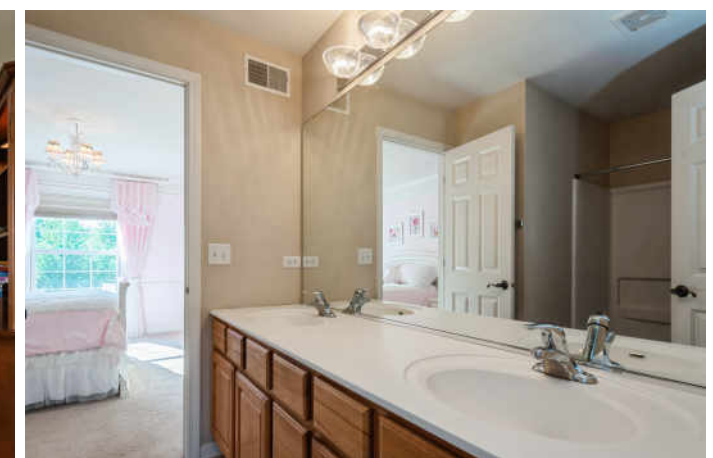


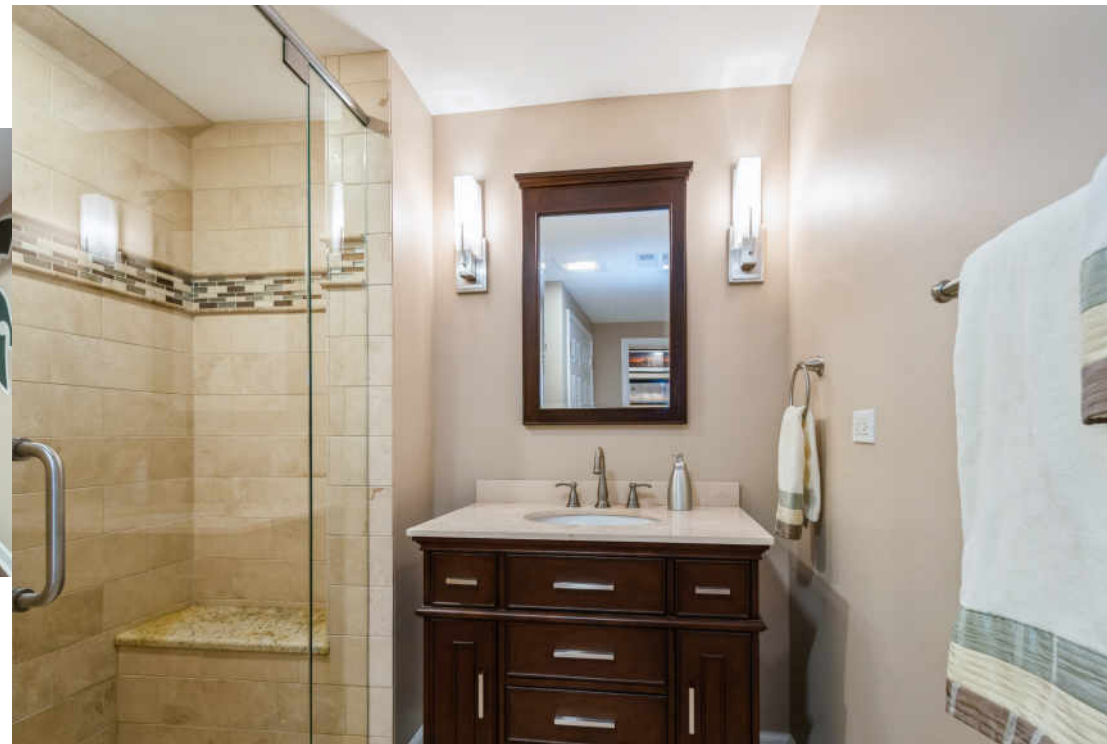
4 BEDROOM
 4.5 BATH













NOTES

[illegible]



TERRY WILKOWSKI

REAL ESTATE BROKER

DIRECT: (847) 682-1549

TWILKOWSKI@ATPROPERTIES.COM



MARY GIBBS-MOODHE

REAL ESTATE BROKER

DIRECT: (847) 902-3357

MGIBBS@ATPROPERTIES.COM



@properties®

1321TURNBERRY.INFO