

13276 GREENLEAF COURT
PALOS HEIGHTS





ROOM DIMENSIONS

LIVING ROOM : 16' × 13'

DINING ROOM : 13' × 11'

KITCHEN : 12' × 11'

BREAKFAST ROOM : 12' × 9'

MASTER BEDROOM : 18' × 16'

BEDROOM 2 : 14' × 12'

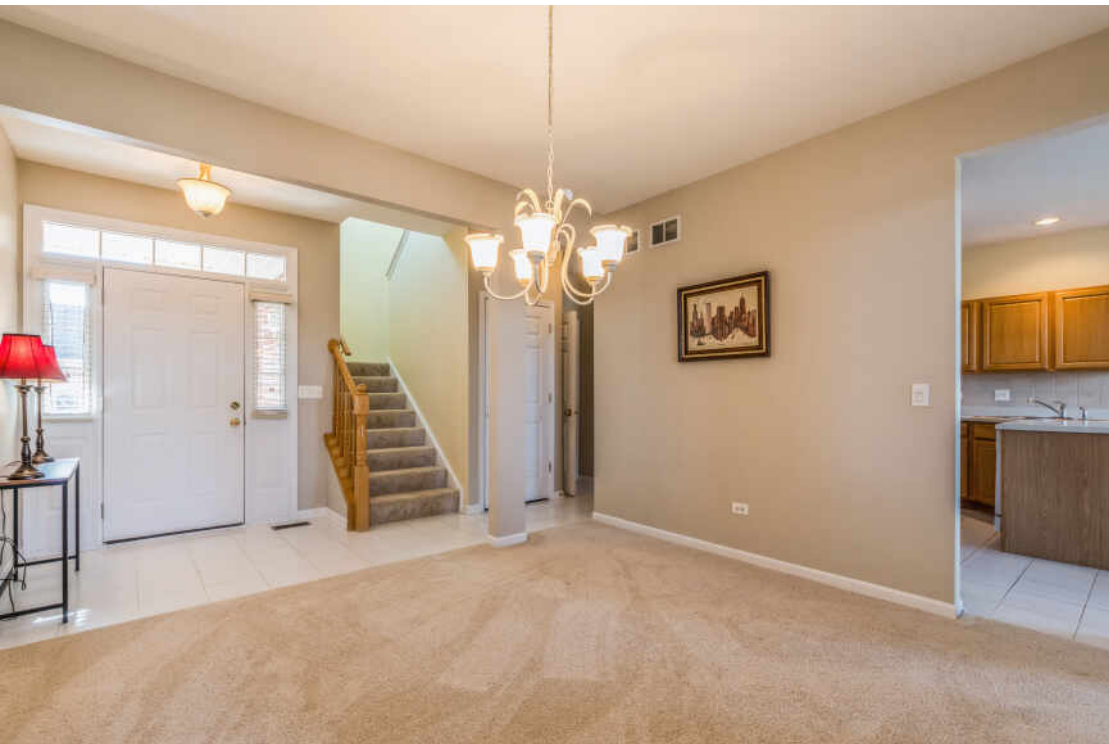
BEDROOM 3 : 11' × 10'

Beautiful well maintained 3 bedroom 2 1/2 bathroom townhome in the highly sought after Forest Ridge subdivision. Open floor plan, vaulted ceiling and fireplace make the living and dining area feel spacious & inviting. The kitchen offers a double oven, cooktop and plenty of counter space & cabinetry for all your culinary needs. Sliding glass doors in the breakfast room lead to the private patio which backs to open space and provides a great spot to relax. New carpeting was installed throughout the home in January 2023. Conveniently located on the main level is the laundry room with access to the attached 2 car garage. Upstairs are 3 large bedrooms, with the master bedroom featuring a vaulted ceiling, walk in closet, an en-suite bathroom with whirlpool tub, separate shower & double bowl vanity. The full unfinished basement is ready for your finishing touches and includes roughed in plumbing for a bathroom. This townhome is a perfect place to call home.

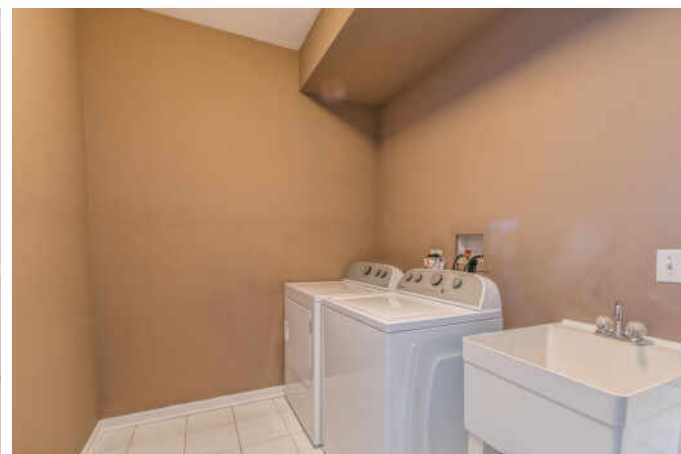
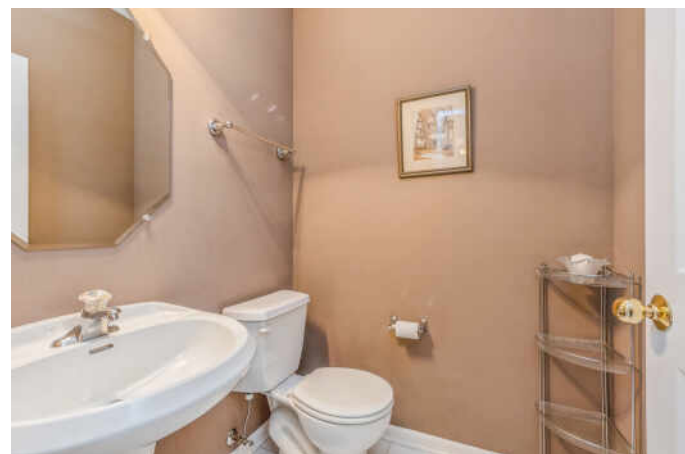


3 BEDROOM

2.1 BATH









PALOS HEIGHTS IS A NATURE LOVER'S DREAM.

Not only is the city home to the Lake Katherine Nature Center & Botanic Garden, where locals and visitors take in the area's beautiful scenery, but it's also close to Swallow Cliff - an 800-acre nature preserve - and numerous forest preserves.

As a tight-knit community, Palos Heights boasts many amenities and maintains a small-town feel. Community events are held year-round and include the Southwest Half Marathon, an indoor and outdoor farmers market, the annual Classic Car Show, and an Independence Day celebration and parade. Palos Heights also has programs such as Adopt-a-Pot - a community planting program that invites local businesses and residents to sponsor a pot or help plant flowers.

With a train station along Metra's SouthWest Service line, Palos Heights offers transportation to Chicago's Union Station. Major highways and interstates such as I-294 and I-57 are also located nearby.



RENATE MEYER

(708) 217-2271

RENATEMEYERREALTOR@GMAIL.COM



DEBBIE POKRZYWA

(708) 921-1820

DEBBIEPOKO@GMAIL.COM