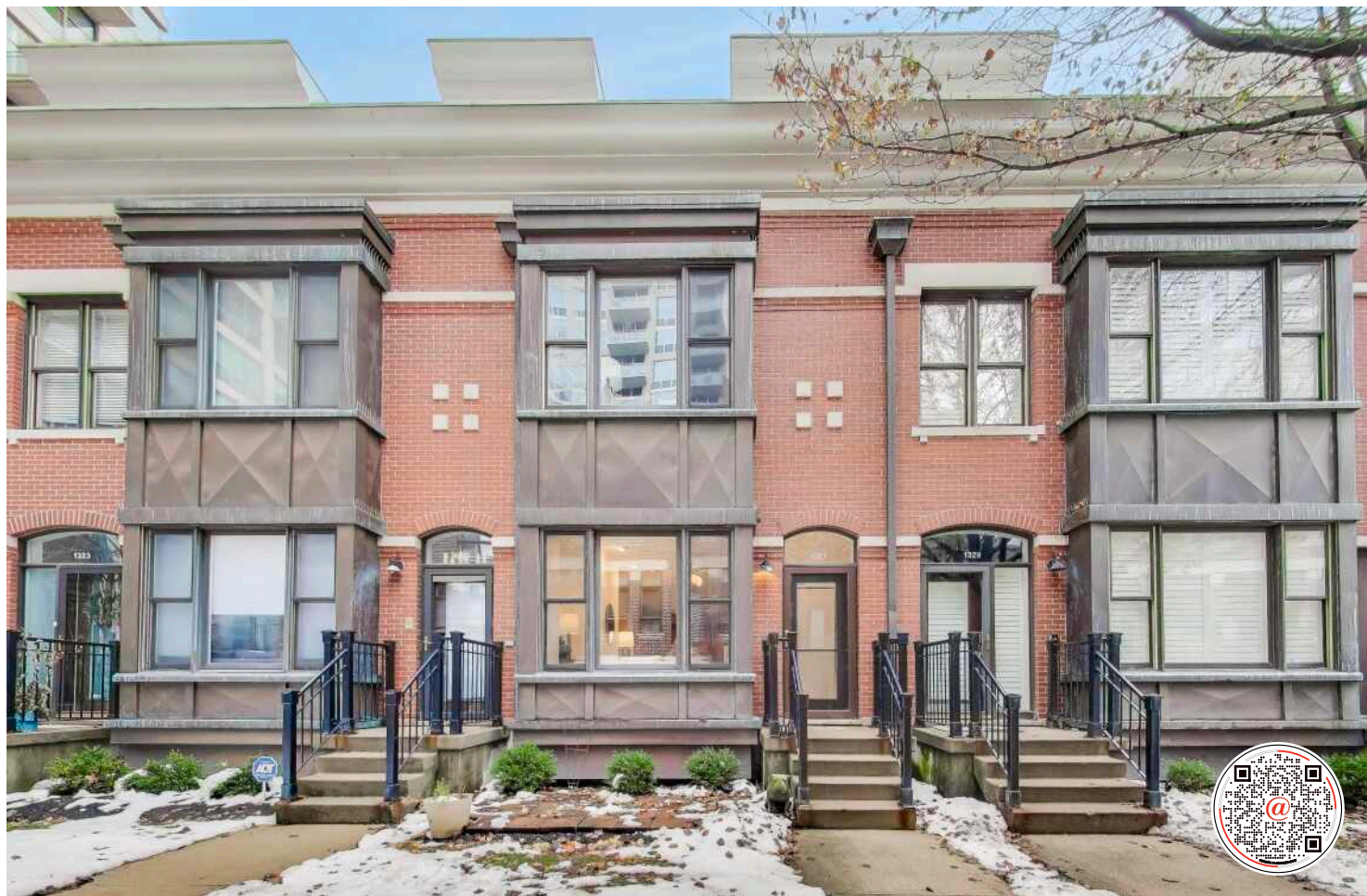


1327 S INDIANA PARKWAY

MUSEUM PARK BOULEVARD ROWHOUSE





ROOM DIMENSIONS

LIVING ROOM : 12' × 13'

DINING ROOM : 12' × 13'

KITCHEN : 12' × 8'

PRIMARY BEDROOM : 12' × 13'

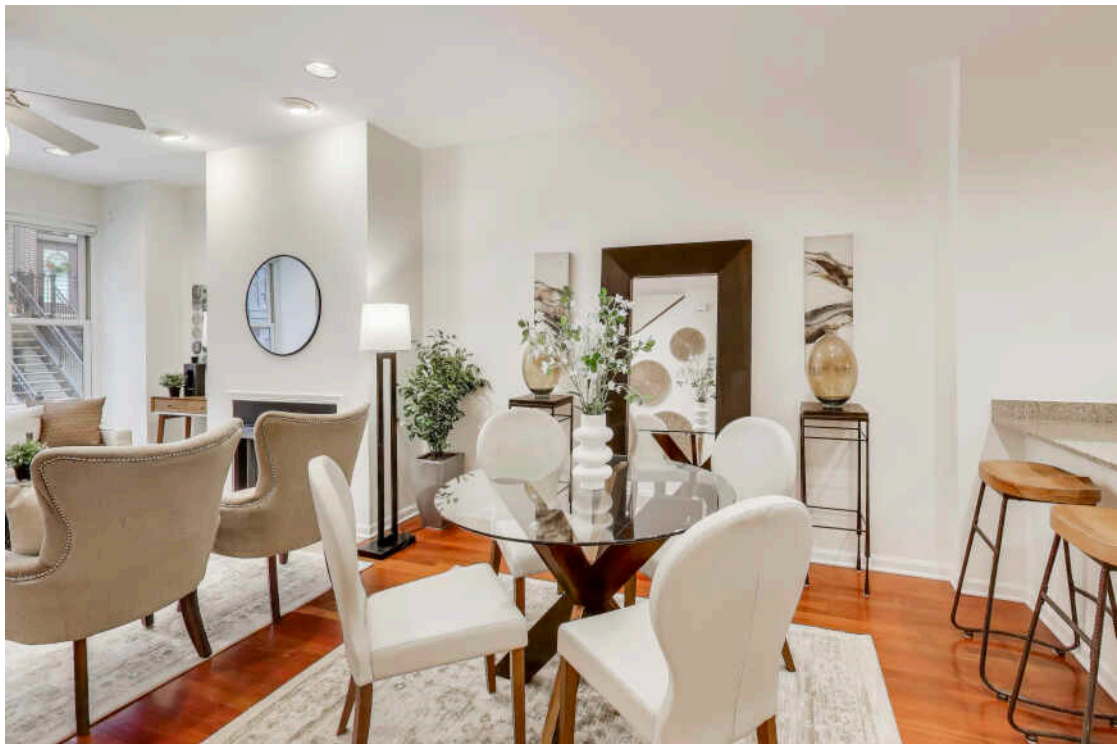
SECOND BEDROOM : 12' × 14'

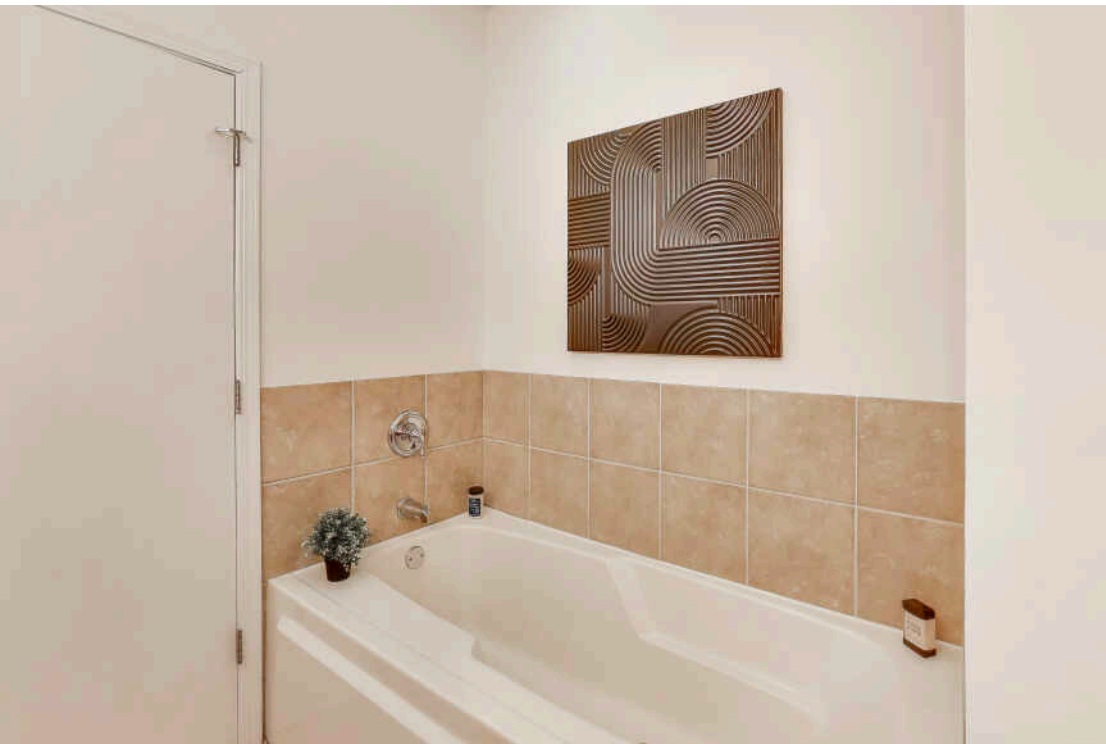
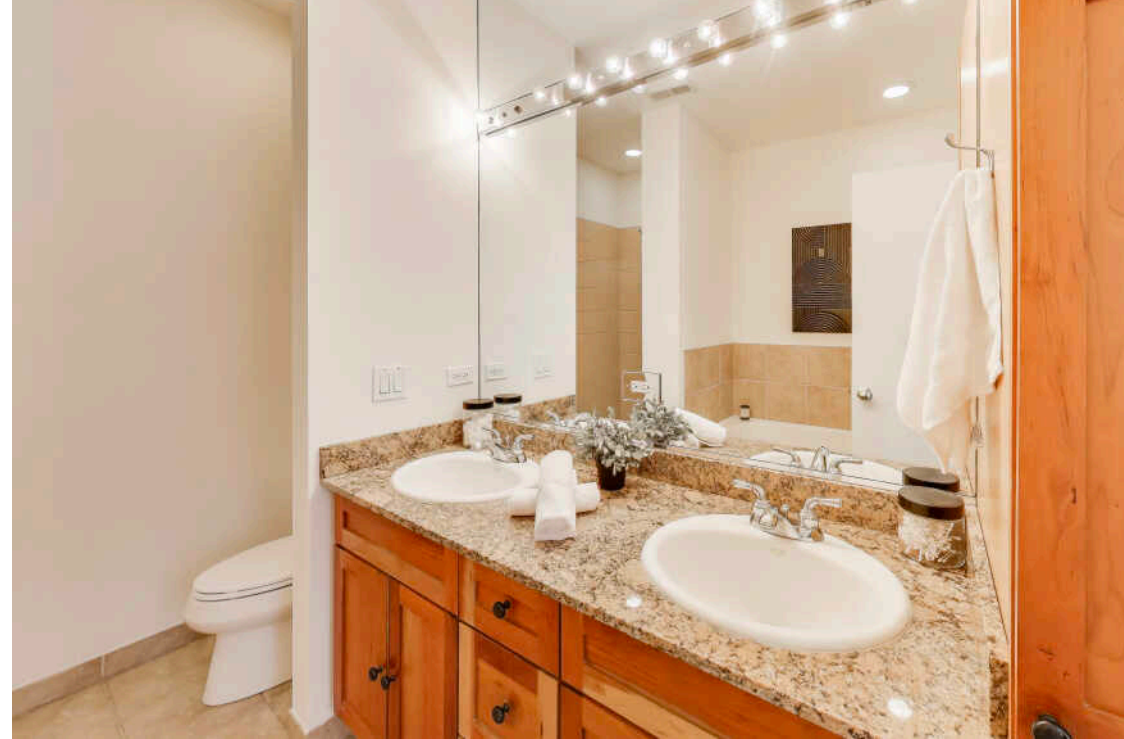
FAMILY ROOM : 15' × 12'

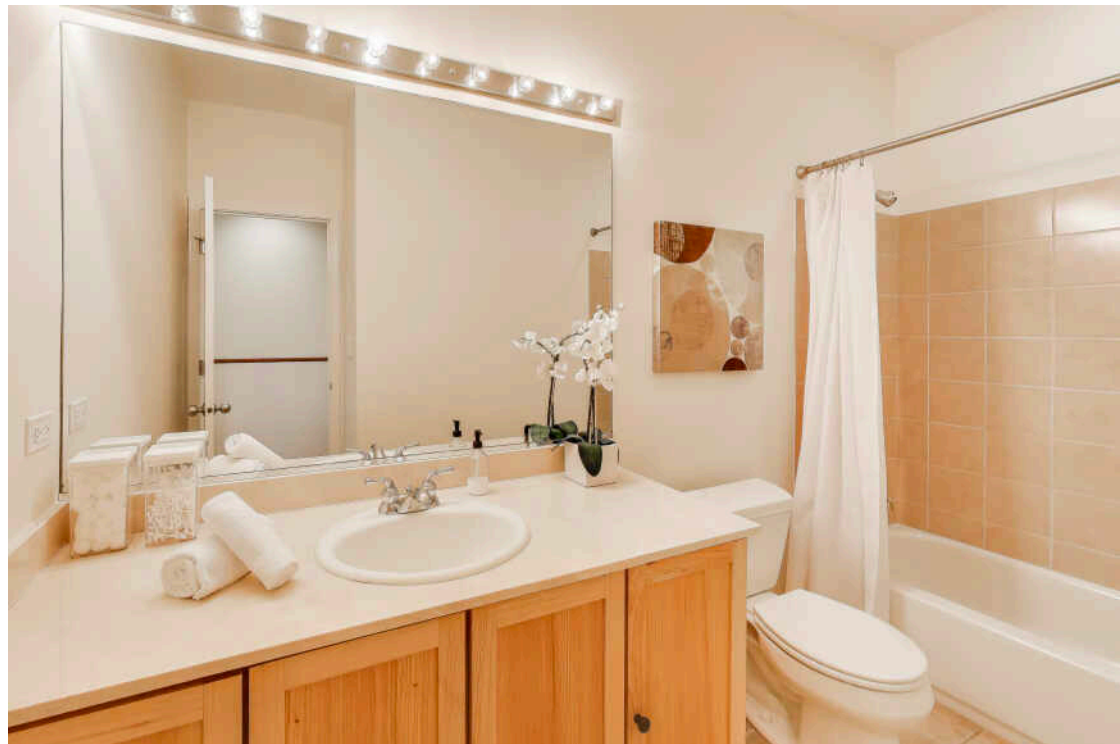
2 BEDROOM

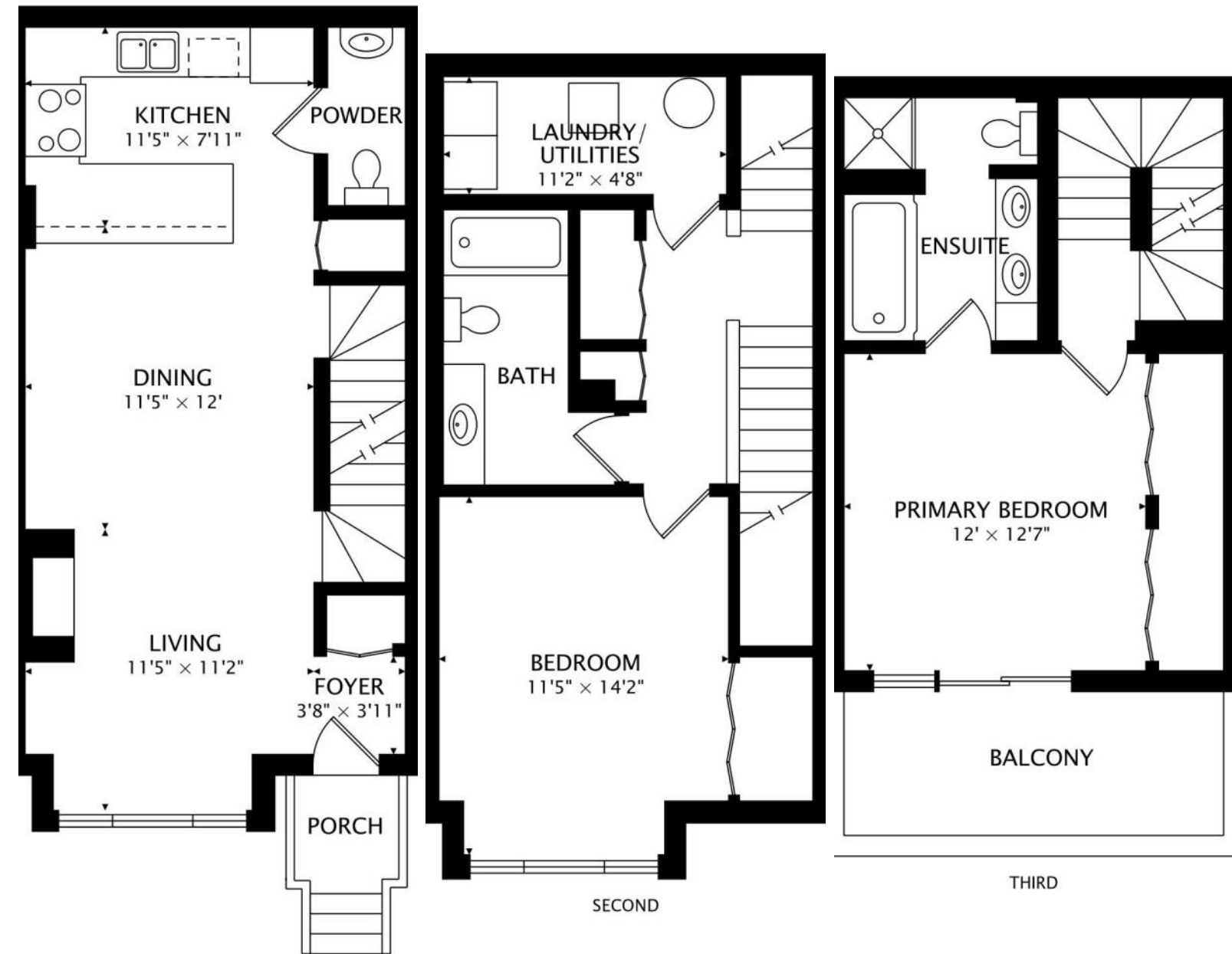
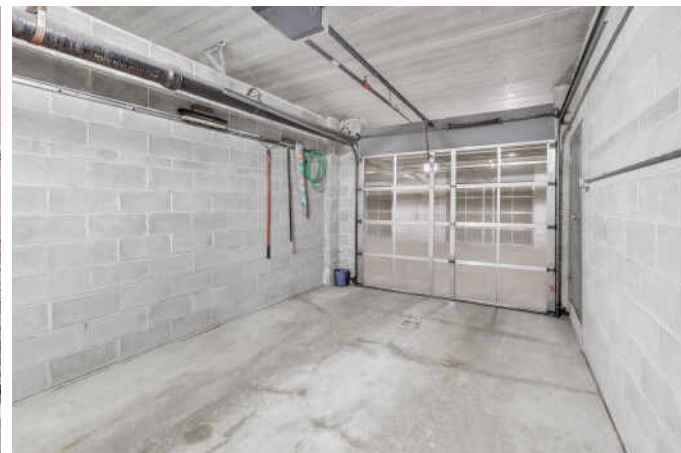
2.1 BATH

Experience ideal South Loop living in the highly desirable Museum Park Boulevard townhomes. Tucked within a quiet, gated courtyard, this beautifully maintained 4-story home offers two bedrooms, two-and-a-half baths, two private outdoor spaces, and a versatile top-floor family room. The bright and welcoming main level features a sun-filled living room with large windows and an elegant gas fireplace, flowing seamlessly into the dining area. Cherry hardwood floors run throughout. The open kitchen includes newer stainless-steel appliances, a generous eat-in peninsula, granite countertops, storage pantry and a 1/2 bath on the main level. The full-floor primary suite offers exceptional space with wall-to-wall organized closets, a private terrace, and an en-suite bath with dual vanities, a soaking tub, and a separate shower. The spacious second bedroom provides excellent closet space and easy access to the side-by-side washer and dryer on the same level. Upstairs, the top-floor family room makes an ideal office, media room, or optional third bedroom, complete with access to the second private terrace. Newer, updated mechanics. An attached single-car garage is included. All of this in a prime South Loop location just steps from Grant Park, Museum Campus, the lakefront, shopping, dining, and convenient CTA and expressway access.











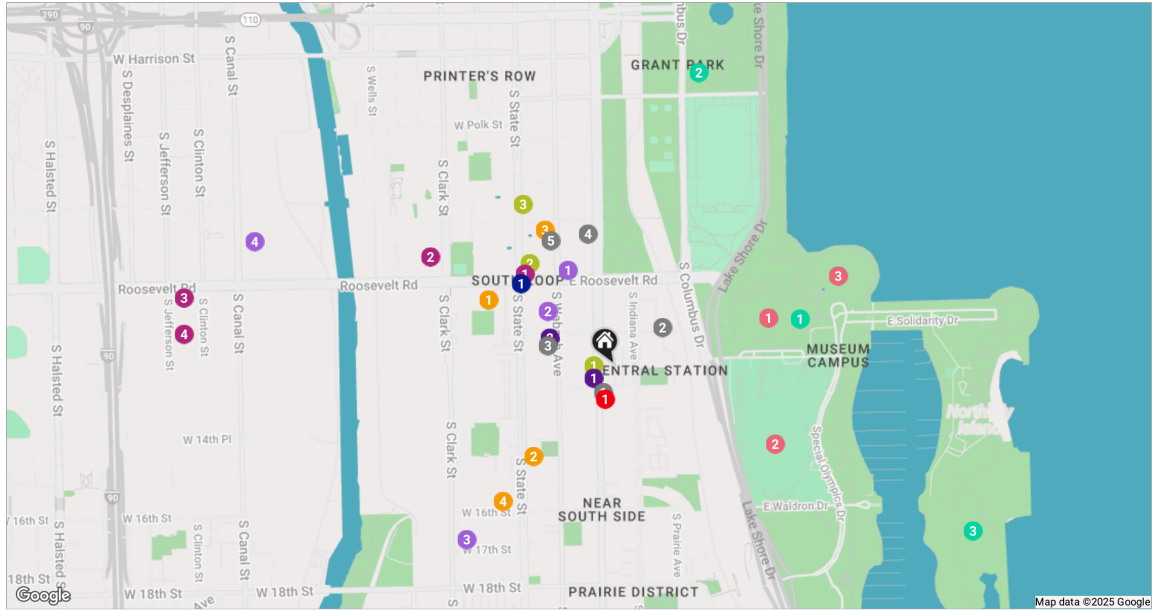
CHARACTERIZED BY TOWERING HIGH RISES AND HISTORIC POCKETS THAT REFLECT THE AREA'S STORIED PAST, THE **SOUTH LOOP** IS A DISTINCTIVE CHICAGO NEIGHBORHOOD.

Chicago's original Gold Coast in the late 19th century, the South Loop was once home to the likes of Marshall Field, George Pullman, and Philip Armour. Today the vibrant neighborhood is known for its access to the lakefront, shops, restaurants, parks, Museum Campus, and The Loop.

The South Loop is comprised of several historic areas including Printer's Row, which features a number of buildings that have been converted into residential lofts, along with Motor Row District and Prairie Avenue District. Meanwhile, several apartment and condominium buildings are under construction, bringing thousands of new residences to the neighborhood.

The South Loop's housing boom has brought with it an influx of retailers along with eateries and nightlife on South Michigan Avenue. The Roosevelt Collection is a popular destination featuring a movie theater and an assortment of retailers.

Museum Campus is the cultural hub of the South Loop featuring attractions including the Field Museum, Shedd Aquarium, Adler Planetarium, and Soldier Field. Residents also enjoy being in close proximity to Northerly Island and public transportation including the CTA's Roosevelt station.



RESTAURANTS

- 1 The Chicago Firehouse Restaurant
1401 SOUTH MICHIGAN AVENUE, 0.1 MI
- 2 Little Branch Cafe
1251 SOUTH PRAIRIE AVENUE, 0.1 MI
- 3 Flo & Santos
1310 SOUTH WABASH AVENUE, 0.2 MI
- 4 Yolk - South Loop
1120 SOUTH MICHIGAN AVENUE, 0.3 MI
- 5 Eleven City Diner
1112 SOUTH WABASH AVENUE, 0.3 MI

SHOPPING

- 1 Walgreens
2 EAST ROOSEVELT ROAD, 0.3 MI
- 2 Target
1154 SOUTH CLARK STREET, 0.5 MI
- 3 Best Buy
555 WEST ROOSEVELT ROAD, 0.9 MI

- 4 The Home Depot
1300 SOUTH CLINTON STREET, 0.9 MI

GROCERY

- 1 Trader Joe's
1147 SOUTH WABASH AVENUE, 0.2 MI
- 2 Jewel-Osco
1224 SOUTH WABASH AVENUE, 0.2 MI
- 3 Mariano's
1615 S CLARK ST, 0.5 MI
- 4 Whole Foods Market
1101 SOUTH CANAL STREET SUITE 107, 0.8 MI

GYM

- 1 Pure Barre
1336 SOUTH MICHIGAN AVENUE, 0.0 MI
- 2 FFC South Loop
1151 SOUTH STATE STREET, 0.3 MI
- 3 Orangetheory Fitness
1005 SOUTH STATE STREET, 0.4 MI

MEDICAL

- 1 Rush
1411 SOUTH MICHIGAN AVENUE, 0.1 MI

SCHOOLS

- 1 South Loop Elementary School
1212 SOUTH PLYMOUTH COURT, 0.3 MI
- 2 South Loop KinderCare
1501 SOUTH STATE STREET, 0.3 MI
- 3 Columbia College
1104 SOUTH WABASH AVENUE, 0.3 MI
- 4 Daystar Academy
1550 SOUTH STATE STREET, 0.4 MI

ENTERTAINMENT

- 1 Field Museum
1400 SOUTH LAKE SHORE DRIVE, 0.3 MI
- 2 Soldier Field
1410 SPECIAL OLYMPICS DRIVE, 0.4 MI

- 3 Shedd Aquarium
1200 SOUTH DUSABLE LAKE SHORE DRIVE, 0.5 MI

TRANSIT

- 1 Roosevelt
CTA - RED LINE, 0.3 MI

PARKS

- 1 The Museum Campus
337 EAST RANDOLPH STREET, 0.4 MI
- 2 Grant Park
CHICAGO, 0.7 MI
- 3 Northerly Island Park
1521 SOUTH LINN WHITE DRIVE, 0.9 MI

SERVICES

- 1 Lakeside Bank
1350 SOUTH MICHIGAN AVENUE, 0.1 MI
- 2 BMO Bank N.A Branches
1300 SOUTH WABASH AVENUE, 0.2 MI

NOTES



JIM MOSER

773.213.6287

JMOSER@ATPROPERTIES.COM

JMOSERHOMES.COM



All specifications, features, designs, price, assessments, taxes and materials are subject to change without notice. Depicted floor plans and architectural renderings are only an artist's impression.

