

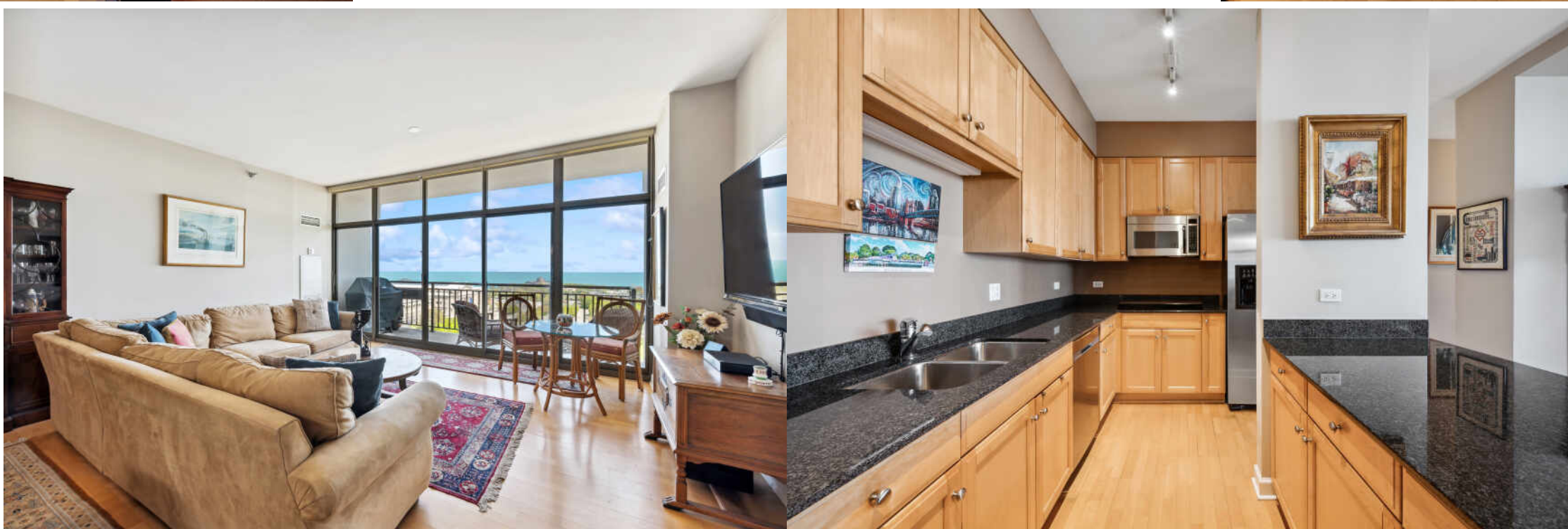
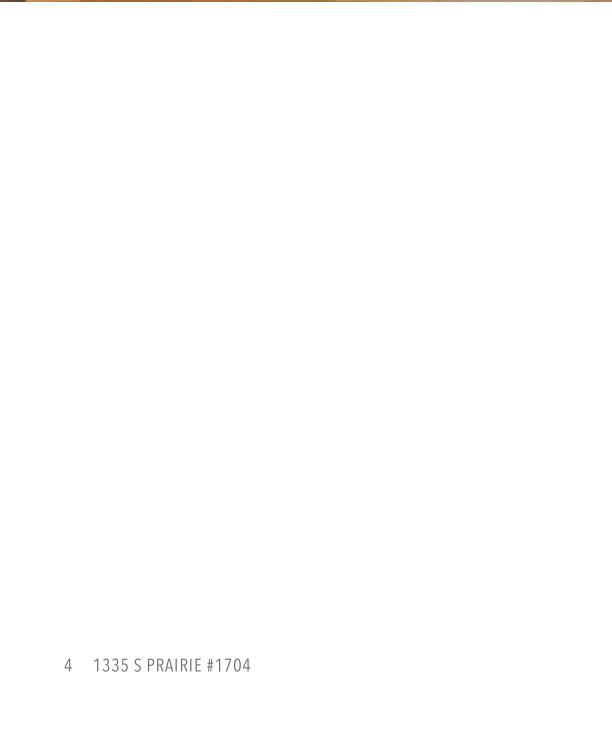
1335 S PRAIRIE #1704
SOUTH LOOP

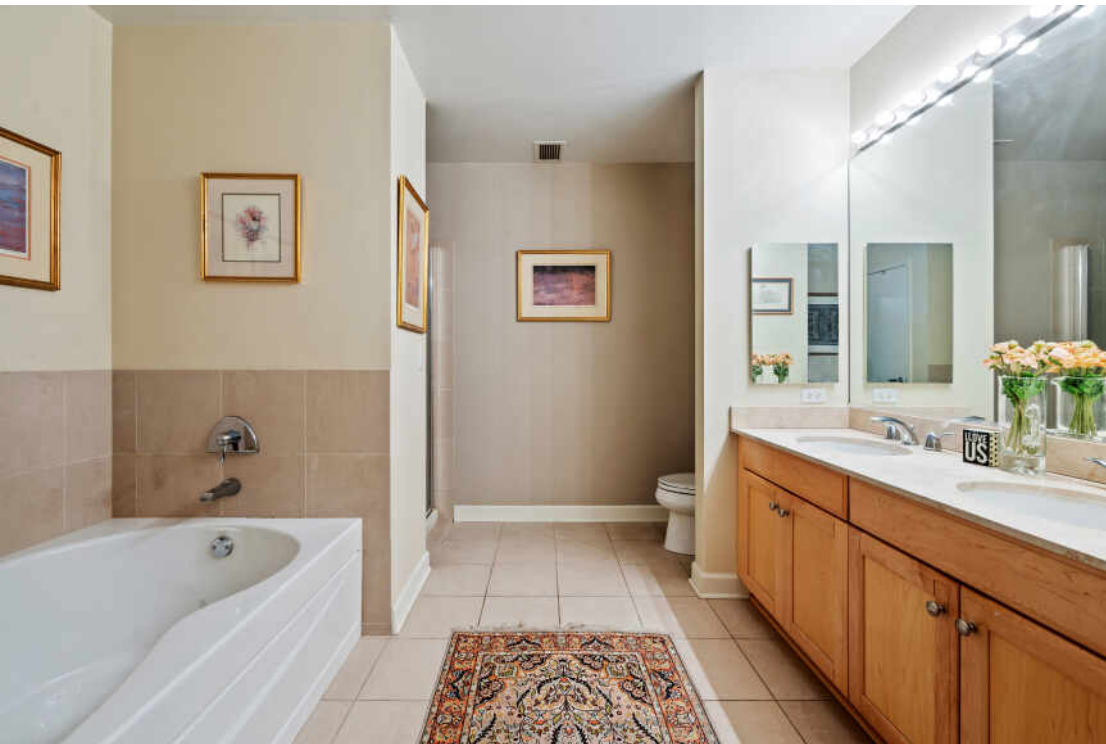
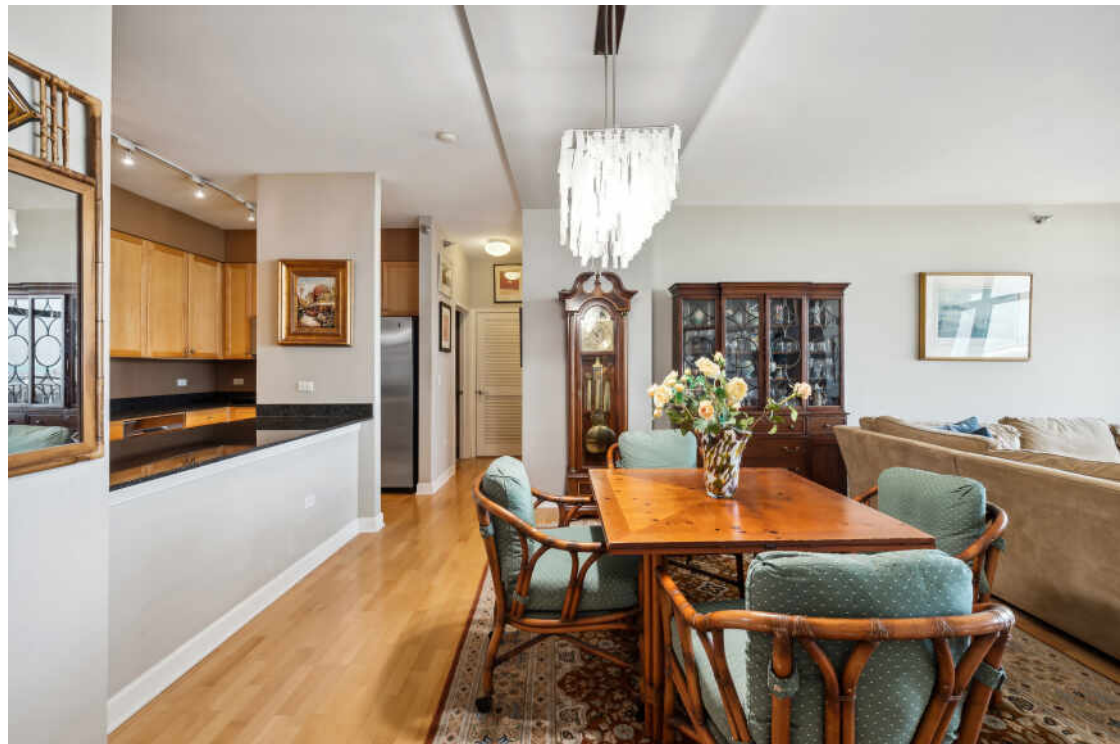


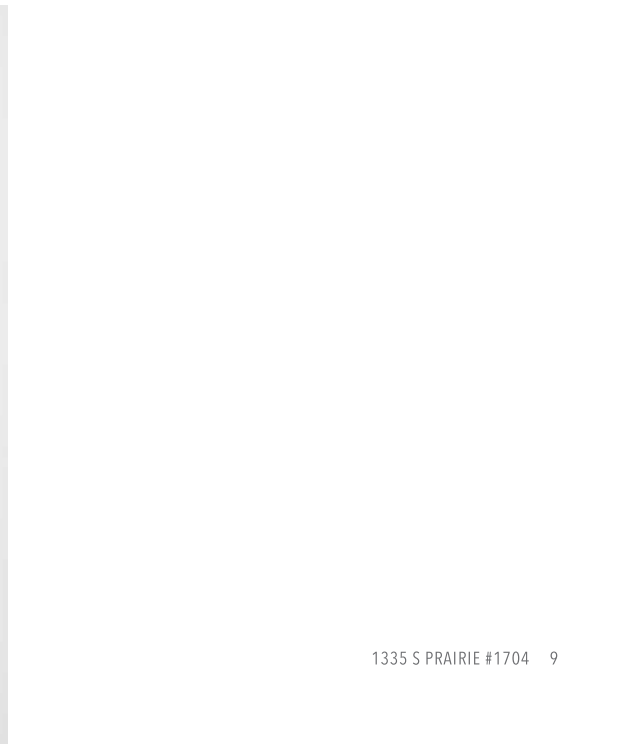
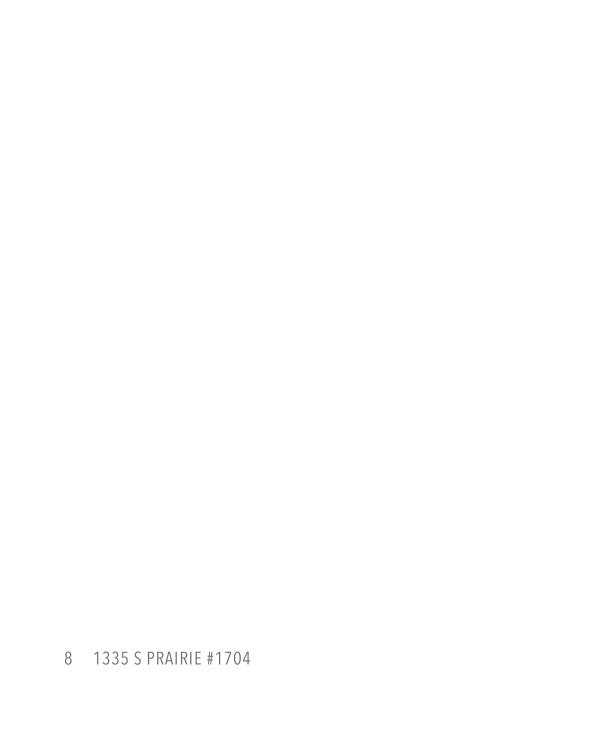


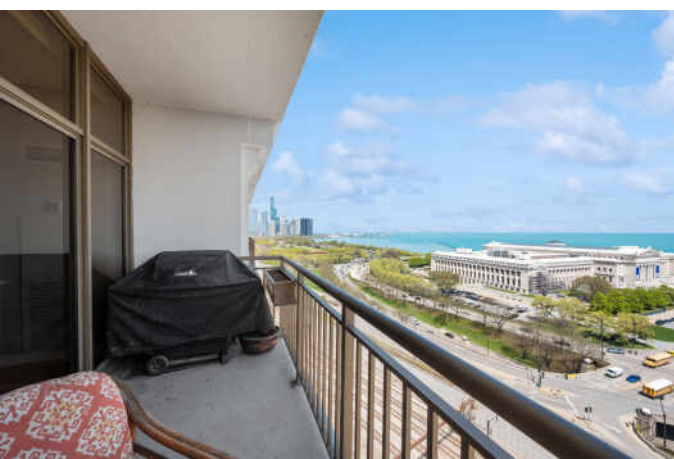
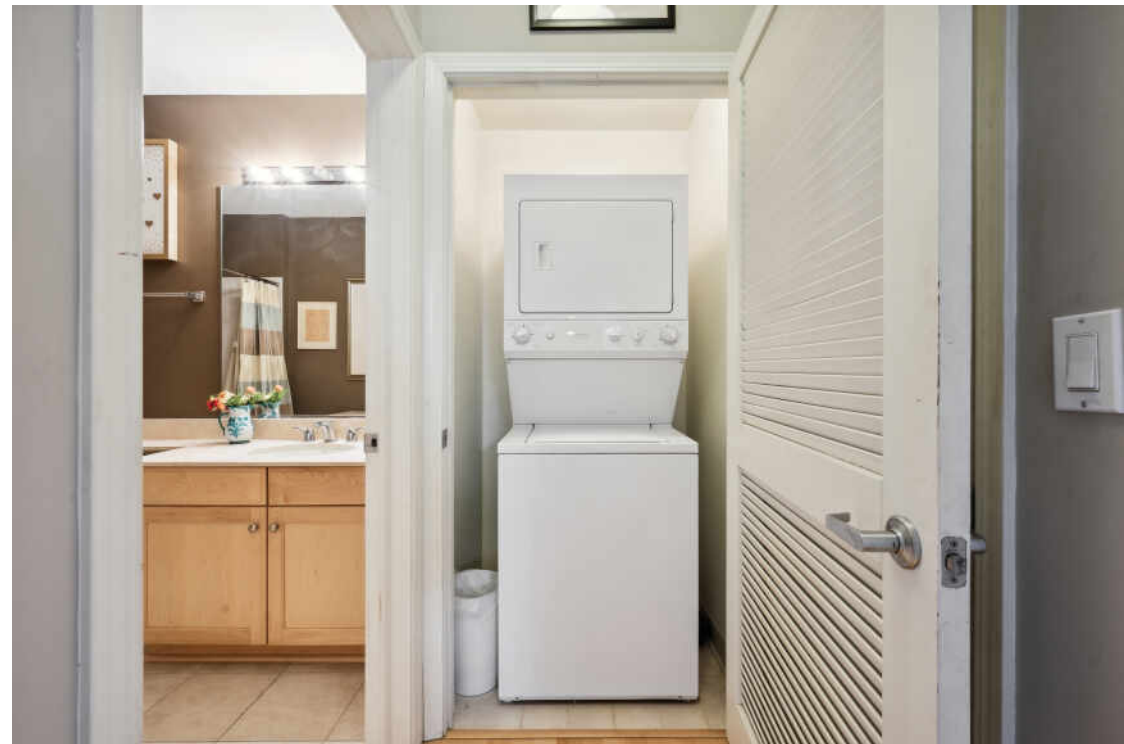
2 BEDROOM
2 BATH
TAXES: 11,026
ASSESSMENTS: 930

Largest east facing 2br/2ba with panoramic unobstructed VIEWS, VIEWS VIEWS of the lake, Soldier Field and Museum Campus. Flooded with light, this split floorplan has floor-to-ceiling windows throughout. A gracious foyer and hardwood floors throughout the living space lead to the open concept kitchen boasting a large island with granite countertops, backsplash and stainless appliances. Your double oven, new dishwasher and disposal make entertaining easy. The large primary bedroom features a huge, organized walk-in closet plus ensuite bathroom with double bowl vanity, soaking tub and separate shower. The second bedroom with its modern style Murphy Bed can double as your library or office space. The in-unit washer/dryer separates the enormous, perfect for Costco storage closet and additional linen closet from the 2nd bath. Step outside onto your lovely 16X6 oasis in the sky. From sunrise to sunset you'll enjoy jaw dropping views made for a postcard. Prime indoor parking space. This full amenity building features 24hr door staff, on-site management, outdoor pool with sundeck, penthouse gym & party room, clubhouse, dry cleaner and South Loop Market. Walk to the lakefront, Grant park, restaurants, stores and public transportation











CHARACTERIZED BY TOWERING HIGH RISES AND HISTORIC POCKETS THAT REFLECT THE AREA'S STORIED PAST, THE **SOUTH LOOP** IS A DISTINCTIVE CHICAGO NEIGHBORHOOD.

Chicago's original Gold Coast in the late 19th century, the South Loop was once home to the likes of Marshall Field, George Pullman, and Philip Armour. Today the vibrant neighborhood is known for its access to the lakefront, shops, restaurants, parks, Museum Campus, and The Loop.

The South Loop is comprised of several historic areas including Printer's Row, which features a number of buildings that have been converted into residential lofts, along with Motor Row District and Prairie Avenue District. Meanwhile, several apartment and condominium buildings are under construction, bringing thousands of new residences to the neighborhood.

The South Loop's housing boom has brought with it an influx of retailers along with eateries and nightlife on South Michigan Avenue. The Roosevelt Collection is a popular destination featuring a movie theater and an assortment of retailers.

Museum Campus is the cultural hub of the South Loop featuring attractions including the Field Museum, Shedd Aquarium, Adler Planetarium, and Soldier Field. Residents also enjoy being in close proximity to Northerly Island and public transportation including the CTA's Roosevelt station.



CATHERINE ARSLANIAN

(312) 259-9493

312-337-0200

CARSLANIAN@ATPROPERTIES.COM