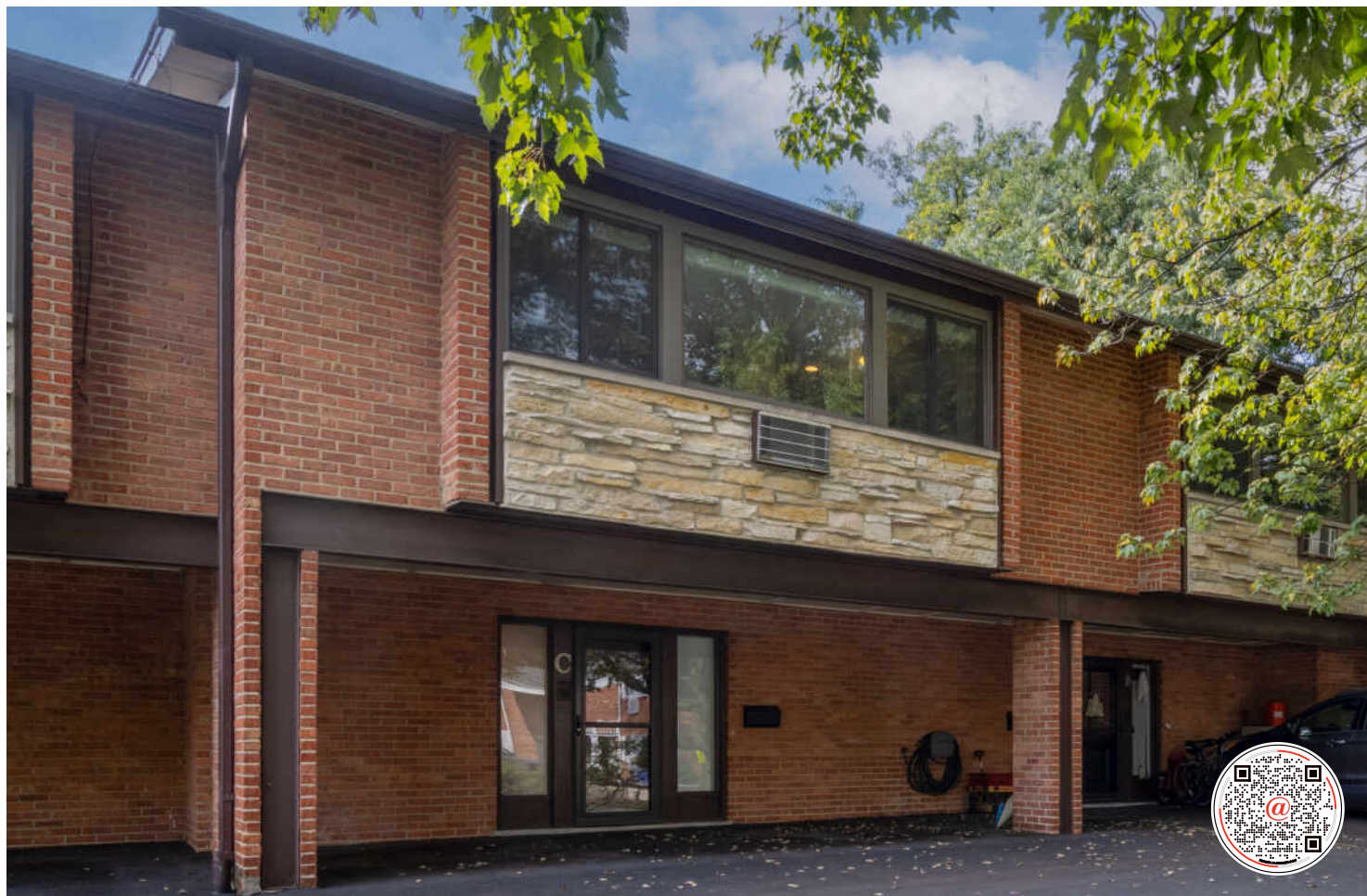


1341 GREENWILLOW LANE #C
GLENVIEW, IL 60025





ROOM DIMENSIONS

KITCHEN : 15' × 8'

LIVING ROOM : 15' × 14'

FAMILY ROOM : 22' × 13'

BEDROOM #1 : 13' × 10'

BEDROOM #2 : 12' × 10'

2 BEDROOM

2 BATH

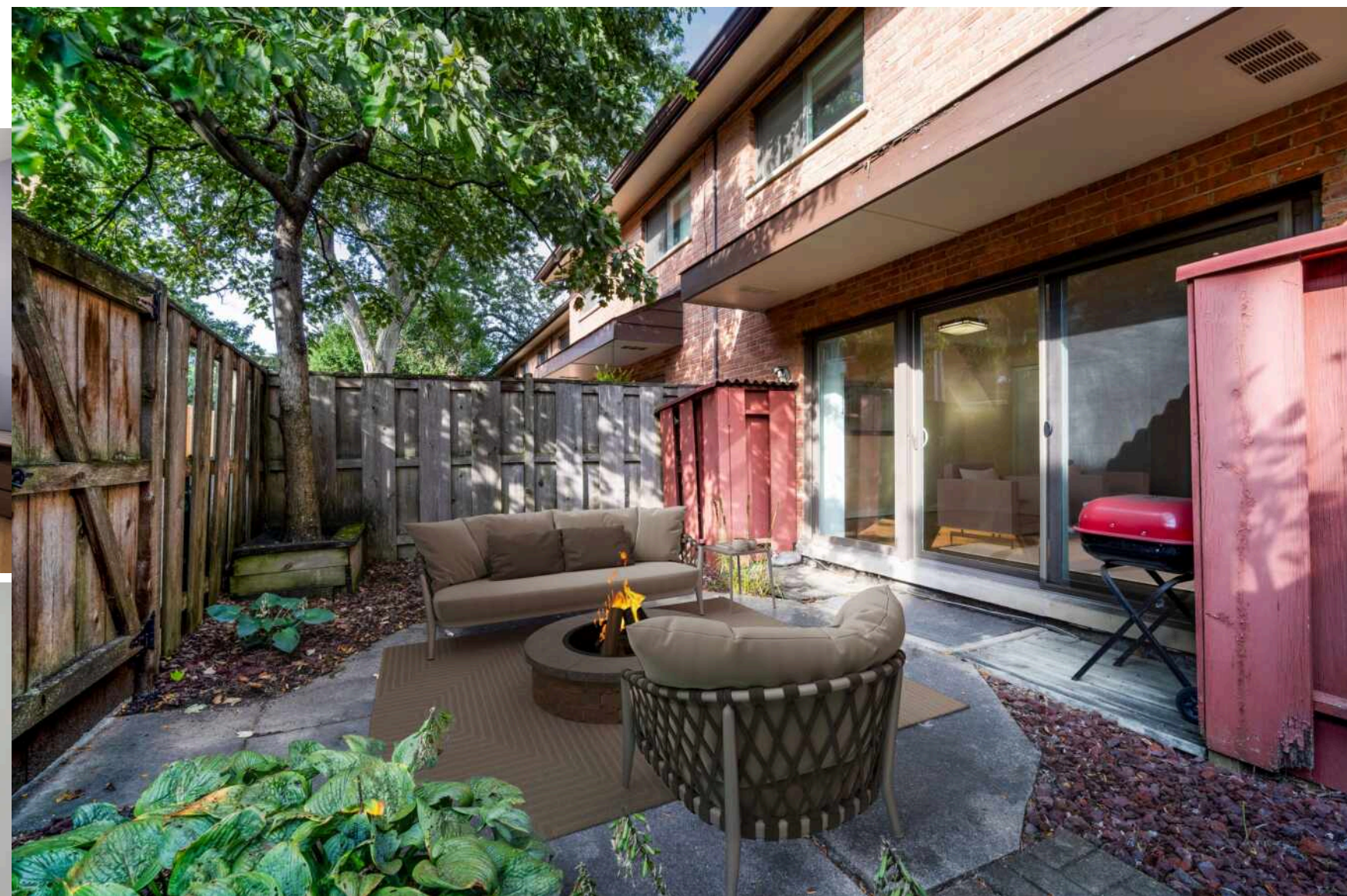
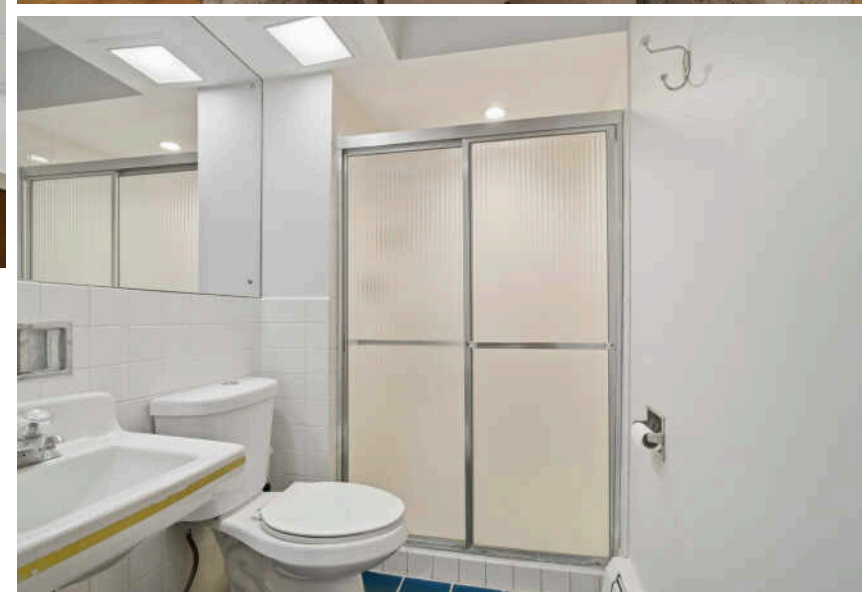
TAXES: SEE LISTING

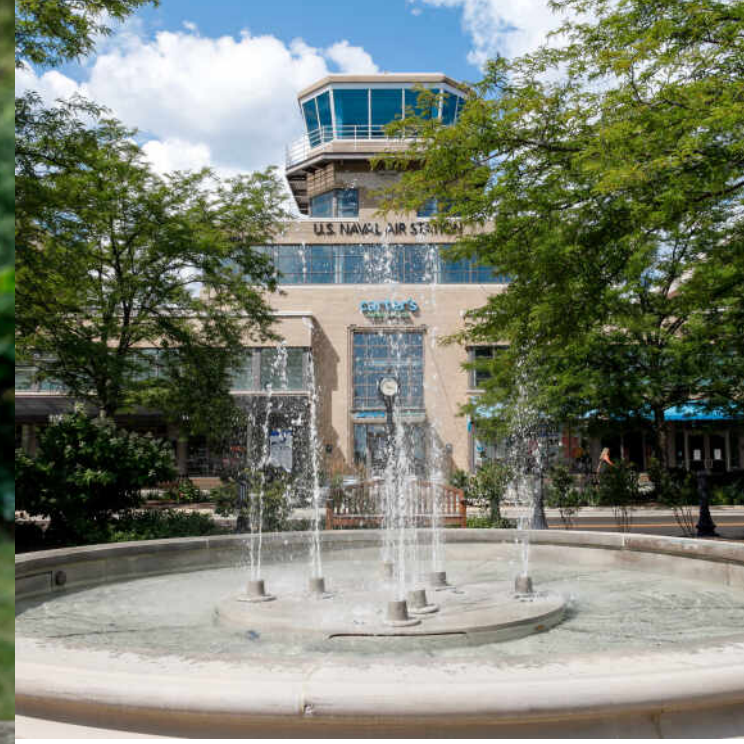
ASSESSMENTS: \$340/MONTH

WELCOME HOME TO COMFORT AND CONVENIENCE IN THE HEART OF GLENVIEW!

This beautifully updated townhome offers the perfect blend of space, style, and location. Nestled in a quiet neighborhood just seconds from the train, parks, library, top-rated schools, and all the dining and shopping of downtown Glenview, this home truly puts everything within reach. The main level features a generous foyer and a spacious family room with a new floor-to-ceiling sliding glass door leading to your private, fenced outdoor living space; perfect for morning coffee, pets, or weekend BBQs. A full bathroom, laundry, and ample storage complete this level. Upstairs, you'll find an updated eat-in kitchen featuring new cabinets, countertops, backsplash, microwave, and dishwasher - ready for everything from takeout nights to home-cooked meals. The open living and dining area show off gleaming hardwood floors and a stunning wall of windows that flood the space with natural light and peaceful treetop views. Both bedrooms offer generous closet space, ceiling fan light fixtures, and plenty of room to relax. With numerous updates throughout (see Additional Information for the full list), this move-in-ready home with carport for two cars is low-maintenance and high on comfort, ideal for your active lifestyle.







JUST 20 MILES FROM DOWNTOWN CHICAGO, **GLENVIEW** IS A DESTINATION IN ITS OWN RIGHT.

The scenic North Shore town has expanded rapidly thanks to its established neighborhoods, convenient access to transportation, and array of amenities.

More than 45,000 people call Glenview home, with properties ranging from townhomes and condominiums to luxury custom homes featuring the latest amenities. Newer homes can also be found at The Glen, a large development on the site of the former Glenview Naval Air Station that offers an assortment of shops and restaurants, a movie complex, the Kohl Children's Museum, and access to one of the town's two Metra stations.

Glenview is served by a number of public and private schools, including Glenbrook South High School, ranked among the top in the nation according to Business Insider.

The Glenview Park District offers indoor and outdoor pools, golf courses, soccer fields, nature trails, an ice center, tennis club, and multi-purpose community center.

In addition to modern development, Glenview celebrates and preserves its early days with two notable attractions: Wagner Farm and The Grove. A 20-acre working farm, Wagner Farm has hands-on programs - horseback riding, tractor driving, and other activities - that reflect a day in the life of a 1920s farmer. The Grove, a National Historic Landmark, includes a prairie, nature trails, historic buildings, and a log cabin that dates back to the 1850s.



MICHAEL CELL, BROKER, CFSP, ABR, GRI, SRS

(847) 322-4402

MICHAELCELL@ATPROPERTIES.COM

CELLYOURHOUSE.COM

WORKING BY REFERRAL SINCE 2001 TO SERVE YOU BETTER!



All specifications, features, designs, price, assessments, taxes and materials are subject to change without notice. Depicted floor plans and architectural renderings are only an artist's impression.

