

13505 LUCKY LAKE DRIVE
LAKE FOREST





LOOKING FOR A TRANQUIL RETREAT? THIS CUSTOM BRICK AND STONE HOME OFFERS ALL THE AMENITIES YOU COULD WANT AND MORE.

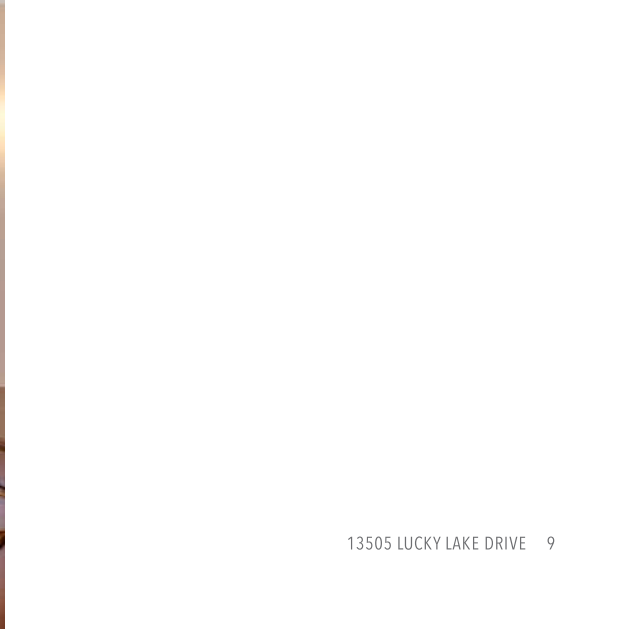
Built in 2002 with an open floor plan, first floor primary suite, hardwood floors and custom finishes, this beautiful home is ready for you to move right in. The first floor features a gracious living room with box window and soaring ceilings and the separate dining room offers a butler's pantry with lots of storage and counter space. Step into the light-filled family room and kitchen, with wide open floor plan, fireplace and doors to the backyard. The white chef's kitchen offers loads of cabinetry, granite countertops, Subzero fridge, Wolf double ovens, cooktop and generous eating area. The laundry room also offers a kitchenette for entertaining, or special occasions. The expansive primary suite and cozy office are conveniently placed off the foyer. Two staircases lead to three spacious ensuite bedrooms with walk-in closets and great ceilings plus a fabulous, vaulted unfinished bonus room on the second floor. The unfinished basement is ready for finishing with generous ceiling heights, wine nook and space galore. The backyard is a nature lover's paradise with well-maintained pond, serene views and lots of privacy. The community lake and beach access, park/playground and tennis courts are also yours to enjoy.



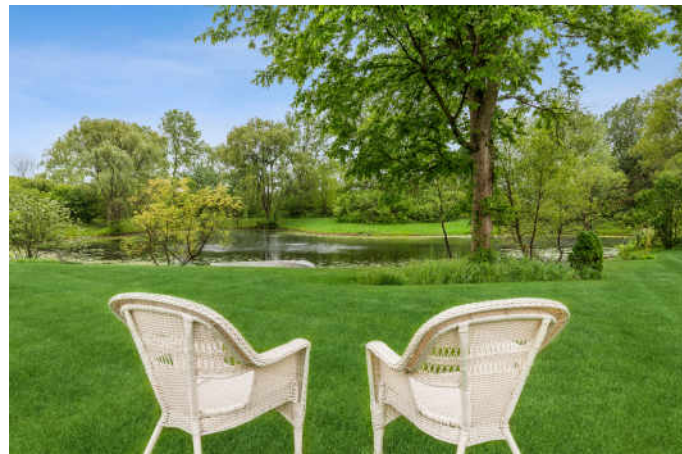


VHT STUDIOS

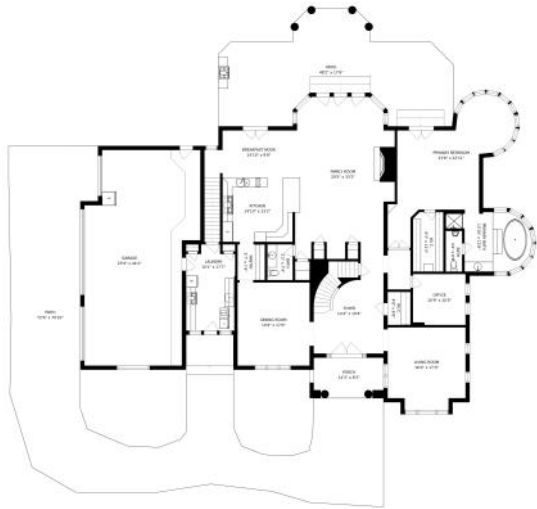




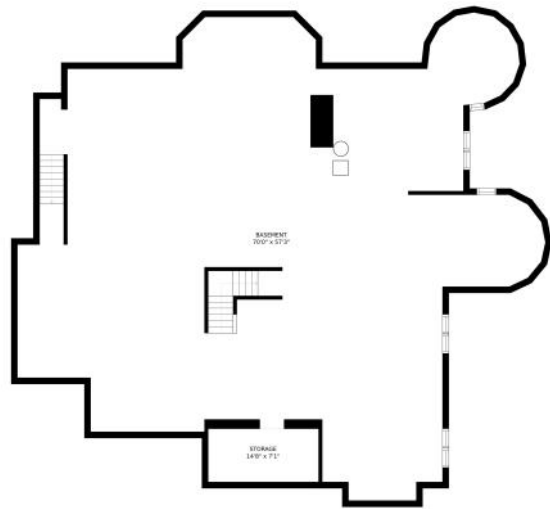




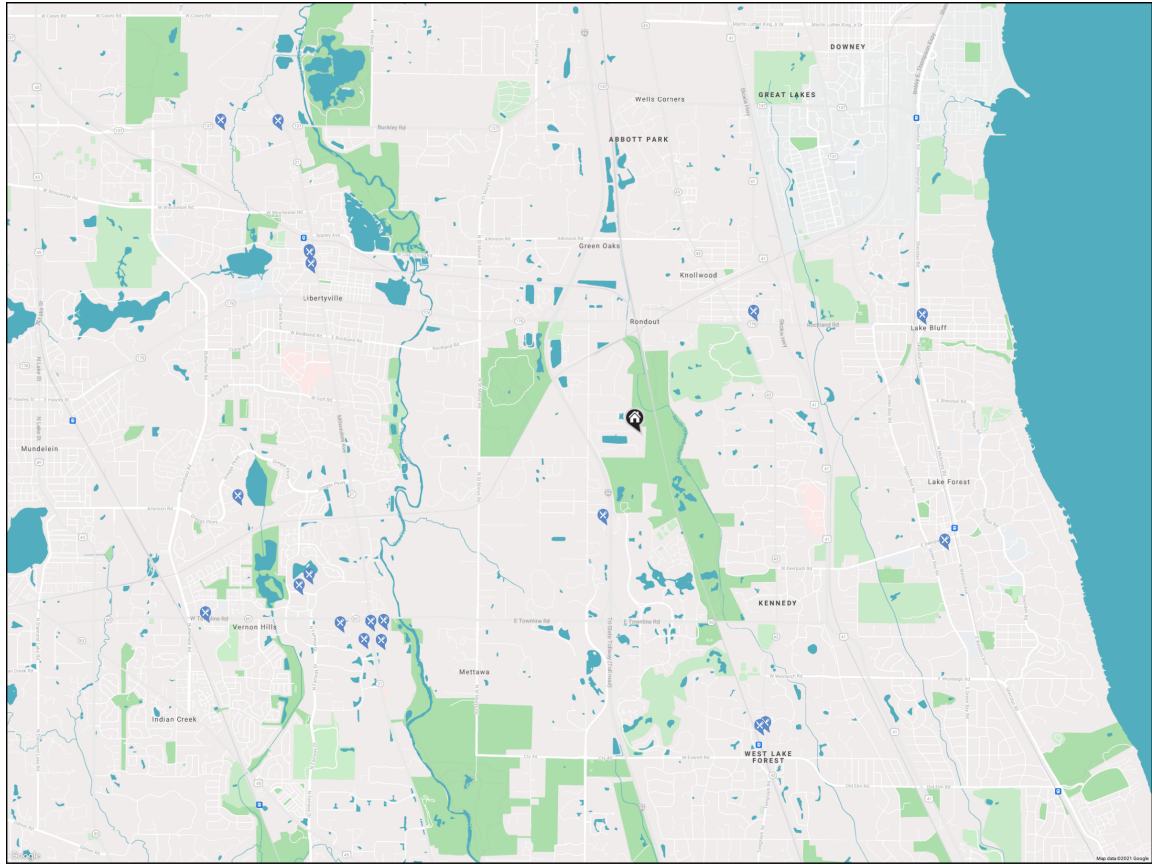
SIZES AND DIMENSIONS ARE APPROXIMATE, ACTUAL MAY VARY.



SIZES AND DIMENSIONS ARE APPROXIMATE; ACTUAL MAY VARY.



SIZES AND DIMENSIONS ARE APPROXIMATE; ACTUAL MAY VARY.



 RESTAURANTS

- Auntie Anne's**
13783 WEST TOLLWAY OASIS SRV ROAD,
0.9 MI
- The Silo Restaurant**
625 ROCKLAND ROAD, 1.5 MI
- Inovasi**
28 EAST CENTER AVENUE, 2.8 MI
- Green Basil**
701 NORTH MILWAUKEE AVENUE #284,
2.9 MI

- Chick-fil-A**
701 NORTH MILWAUKEE AVENUE STE 360,
3.0 MI
- Jimmy John's**
840 SOUTH WAUKEGAN ROAD STE 110,
3.0 MI
- Deer Path Inn**
255 EAST ILLINOIS ROAD, 3.0 MI
- Sushi Kushi Toyo**
825 SOUTH WAUKEGAN ROAD, 3.0 MI
- Tsukasa of Tokyo**
561 NORTH MILWAUKEE AVENUE, 3.1 MI

- On The Border Mexican Grill & Cantina**
535 LAKEVIEW PARKWAY, 3.2 MI
- Subway**
555 EAST TOWNLINE ROAD, 3.3 MI
- Mickey Finn's Brewery**
345 NORTH MILWAUKEE AVENUE, 3.3 MI
- Bowlero Vernon Hills**
316 CENTER DRIVE, 3.3 MI
- WhirlyBall Vernon Hills**
285 CENTER DRIVE, 3.4 MI
- Firkin**
515 NORTH MILWAUKEE AVENUE, 3.4 MI

- The Picnic Basket Restaurant & Gourmet Food Works Catering**
501 NORTH MILWAUKEE AVENUE, 3.4 MI
- Lake Charles Grill**
250 WEST GREGGS PARKWAY, 3.7 MI
- Wildberry Pancakes and Cafe**
1783 NORTH MILWAUKEE AVENUE, 4.3 MI
- Buffalo Wild Wings**
361 WEST TOWNLINE ROAD, 4.3 MI
- Austin's**
481 PETERSON ROAD, 4.7 MI



ANDRA O'NEILL

(847) 650-9093

847-295-0700

ANDRA@ATPROPERTIES.COM

WWW.ANDRAONEILL.COM



13505LUCKYLAKE.INFO