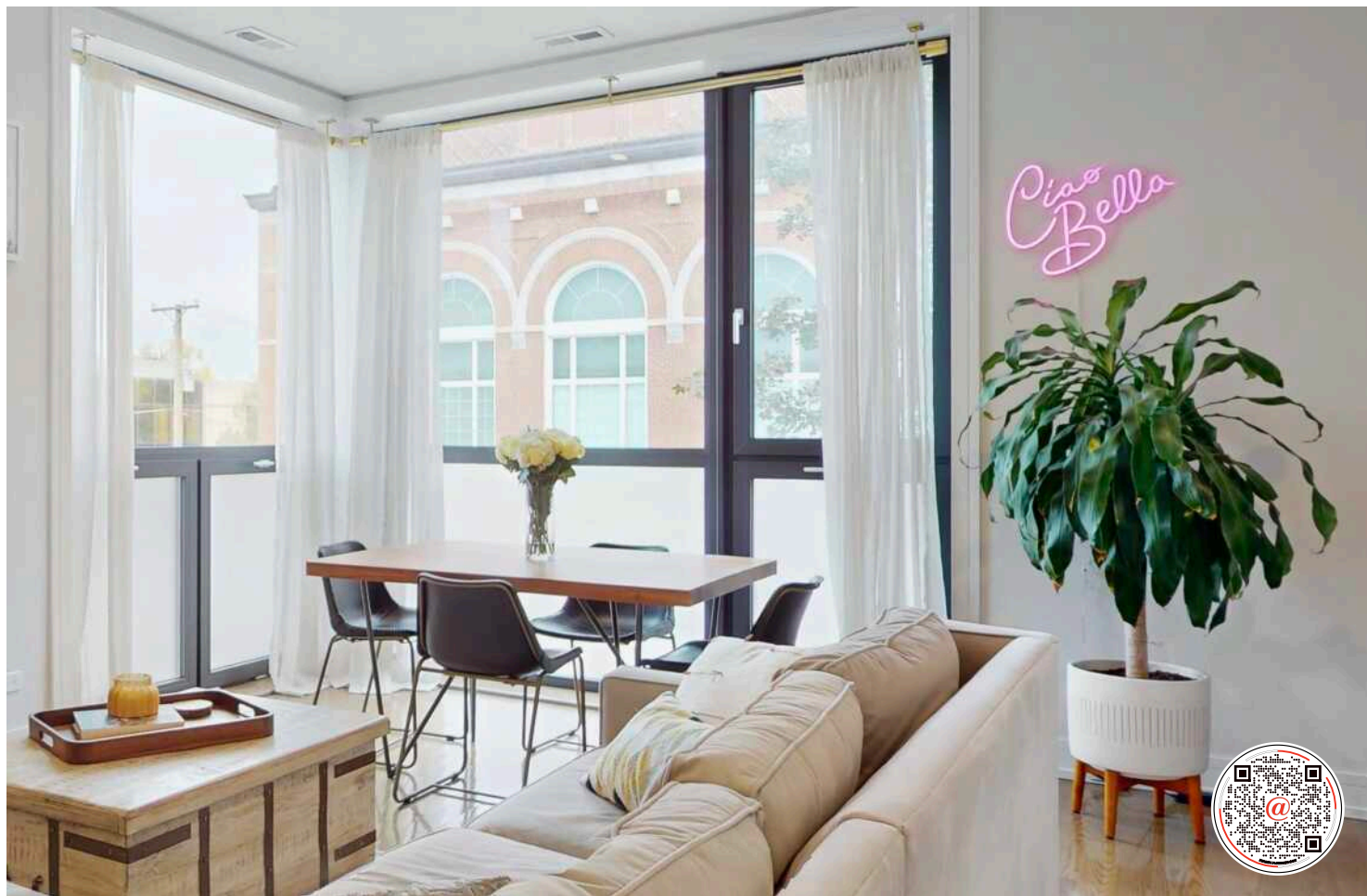


1350 N CLAREMONT AVENUE #2
WICKER PARK





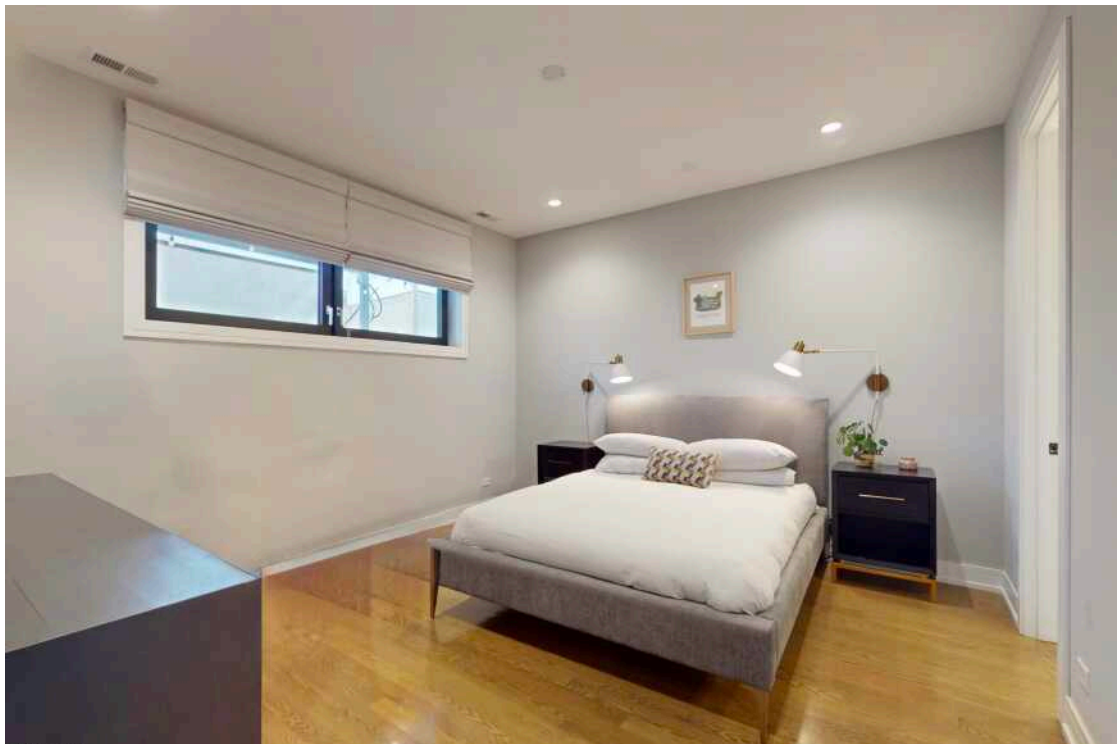
2 BEDROOM
2 BATH
TAXES: 8,660.41
ASSESSMENTS: 163

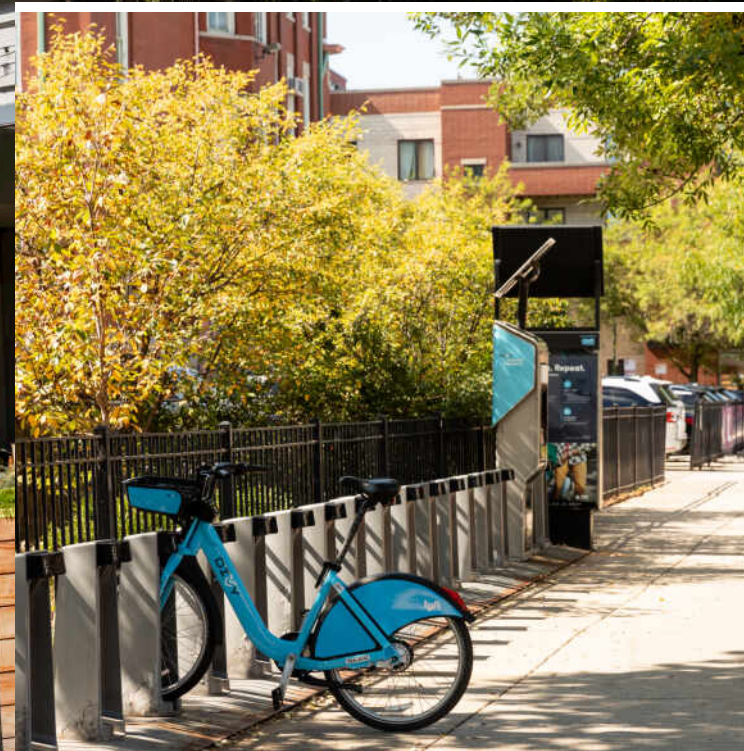
WELCOME HOME

Set on a quiet, tree-lined street in the heart of Wicker Park, this 2-bedroom, 2-bathroom home offers modern features, refined finishes, and thoughtful design in a boutique three-unit building.

- Floor-to-ceiling windows with east facing exposures highlight the wide, open-concept living and dining area, anchored by a sleek fireplace with custom mantle & full-height tile surround.
- The kitchen features custom cabinetry, quartz countertops, an island with a waterfall edge, and high-end stainless steel appliances.
- Spacious rear-facing primary suite includes a walk-in closet and a spa-like main bath with an oversized steam shower, heated floors, and dual vanity.
- Second bedroom features a custom Murphy bed, perfect for creating a flexible home office, gym and guest space.
- Additional features include hardwood floors, 8' solid-core interior doors, in-unit laundry, a private rear deck, and garage parking.







RESIDENTS AND BUSINESSES FLOCKED TO **WICKER PARK** TO REBUILD AFTER THE GREAT CHICAGO FIRE OF 1871. TODAY, CHICAGOANS FLOCK TO THE HIP, HAPPENING NEIGHBORHOOD FOR ITS EATERIES, ARTS AND ENTERTAINMENT.

Wicker Park boasts an eclectic assortment of cafes, independent stores, dive bars, upscale boutiques, art galleries and city parks including four-acre Wicker Park. The neighborhood is home to some of Chicago's most popular and acclaimed restaurants, elevating pizza and tacos to foodie fare and offering a wide variety of options for drinking and dining pleasure.

Located just south of Bucktown and northwest of The Loop, the neighborhood includes large historic 19th century brick and stone mansions and landmark Victorian homes on tree-lined streets. Modern new construction condominiums and single-family homes along with vintage walk-ups, three-flats and lofts round out the diversity of housing available.

Like neighboring Bucktown, Wicker Park's notable commercial architecture remains - re-imagined, redeveloped and restored. The iconic Flat Iron Arts Building, home to artists who moved to the neighborhood in the 1980s, still houses various art studios and local businesses today.

The CTA Blue Line offers convenient access to The Loop and O'Hare International Airport, while the Kennedy Expressway allows for an easy drive to surrounding neighborhoods and suburbs.

1350 N Claremont Avenue #2, Chicago, IL



SIZES AND DIMENSIONS ARE APPROXIMATE, ACTUAL MAY VARY.

[illegible]



DANNY DEOLIVEIRA

732.713.7337

DANNYD@ATPROPERTIES.COM



All specifications, features, designs, price, assessments, taxes and materials are subject to change without notice. Depicted floor plans and architectural renderings are only an artist's impression.

