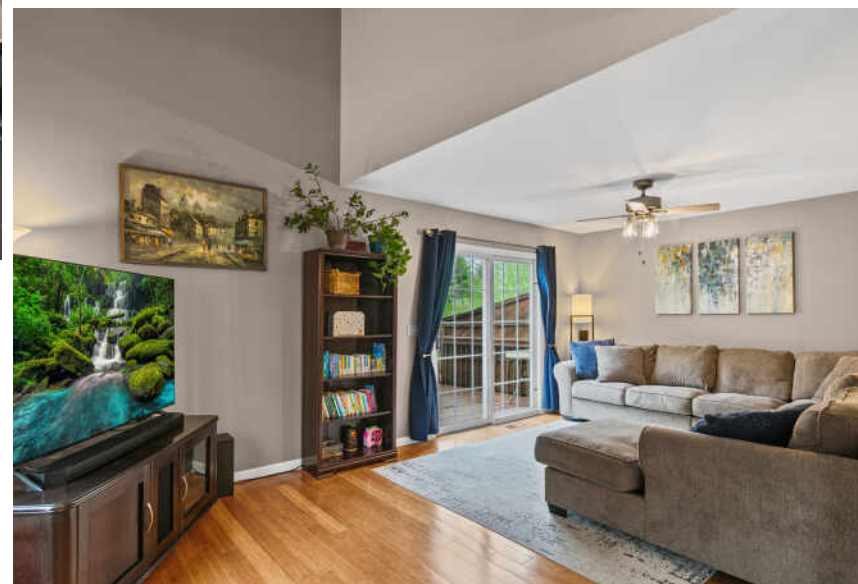


1354 LAUREL OAKS DRIVE
STREAMWOOD



@properties®

CHRISTIE'S
INTERNATIONAL REAL ESTATE



ROOM DIMENSIONS

LIVING ROOM : 17' x 11'

KITCHEN : 16' x 12'

DINING AREA : 16' x 9'

FAMILY ROOM : 20' x 12'

MUDROOM : 10' x 4'

PRIMARY BEDROOM : 18' x 12'

SECOND BEDROOM : 20' x 12'

LOFT : 20' x 17'

RECREATION ROOM : 31' x 21'

BASEMENT BEDROOM : 11' x 21'

UTILITY ROOM : 10' x 16'

GARAGE : 20' x 20'

DECK : 13' x 21'

ATTIC STORAGE : 20' x 8'

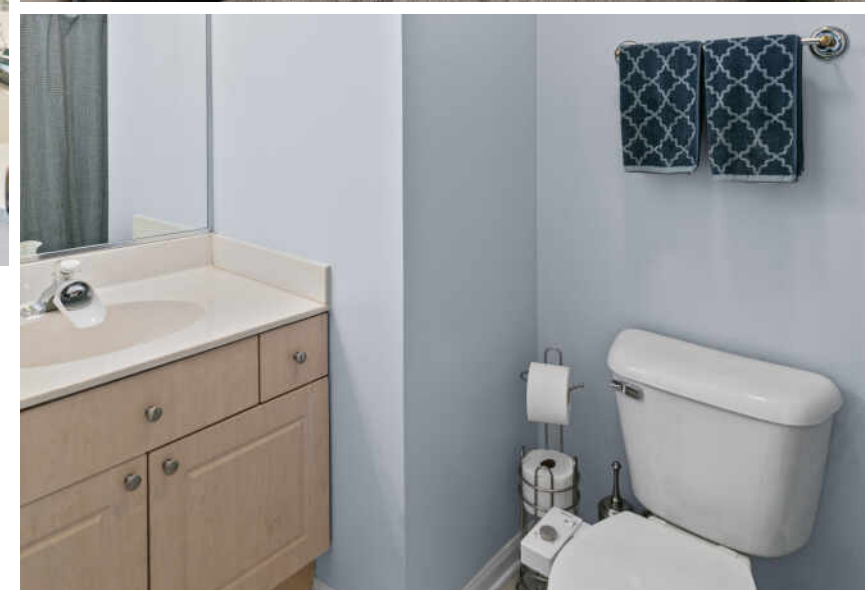
3 BEDROOM

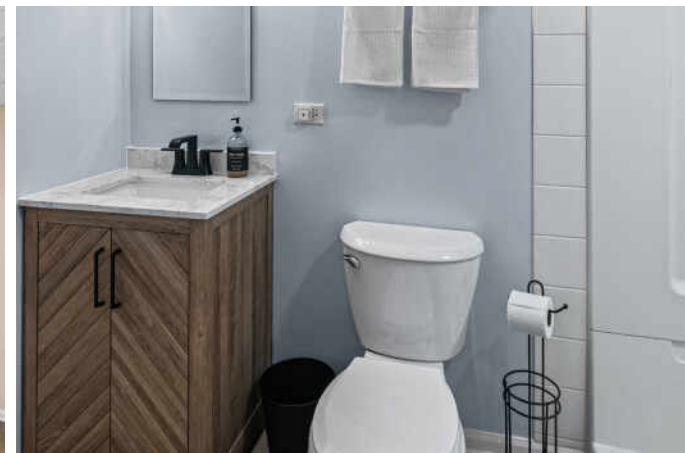
3.1 BATH

TAXES: \$8,456

ASSESSMENTS: \$176/MO

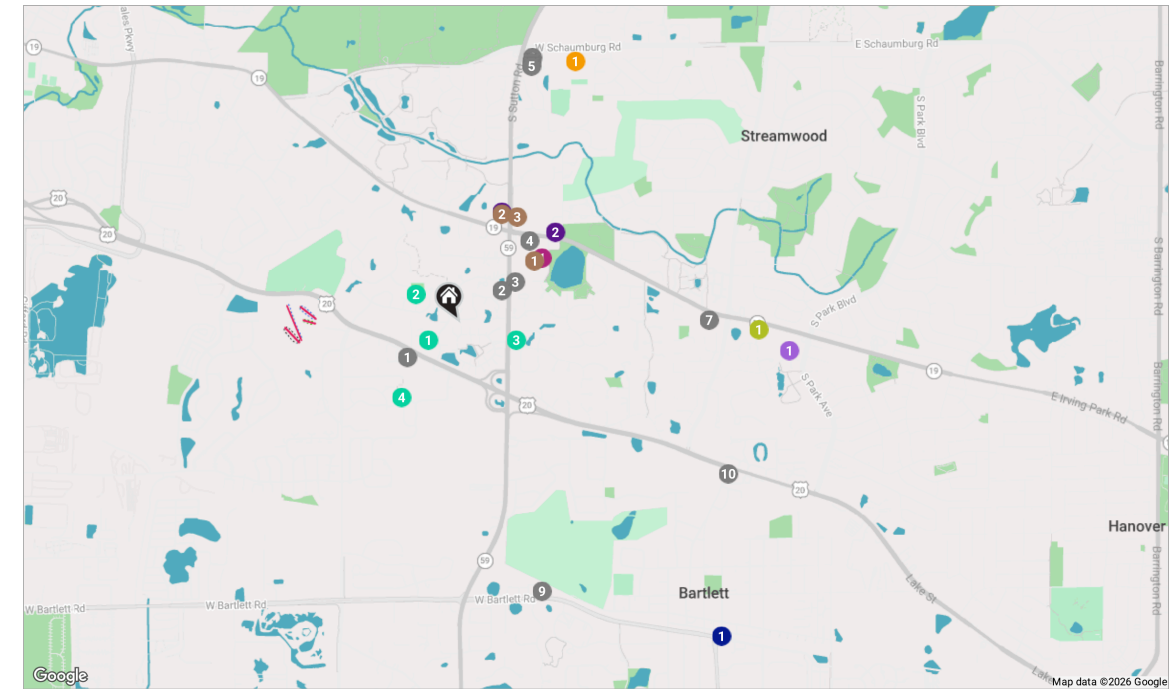
Move-in ready and beautifully maintained, this spacious home offers the perfect blend of updates, functionality, and value in today's market. The main level features durable bamboo flooring and a flexible layout with spacious living areas filled with natural light. The open-concept kitchen showcases white cabinetry, Corian countertops, an on-trend backsplash, newer stainless steel appliances (2024), and under-cabinet lighting, all with excellent flow into the main living spaces—ideal for both everyday living and entertaining. Upstairs, you'll find generously sized bedrooms with vaulted ceilings, a versatile loft space perfect for a home office or additional living area, and a large primary suite with dual walk-in closets and a spacious en-suite bath featuring a corner whirlpool tub. The finished basement adds valuable living space with a full bedroom, full bath, and a large recreation area. Major mechanicals include a newer furnace (2020). The home also features a large deck overlooking a private outdoor setting, perfect for relaxing or entertaining. Exceptionally well cared for with great natural light, functional layout, and low association fees, this home offers incredible value in a highly desirable community.





Total: 2966 sq. ft
 Basement: 859 sq. Ft, 1st Floor: 975 sq. Ft, 2nd Floor: 1132 sq. ft
 Excluded Areas: Utility: 115 sq. Ft, Garage: 400 sq. Ft, Deck: 205 sq. Ft,
 Bay Window: 9 sq. Ft, Low Ceiling: 123 sq. Ft, Attic: 25 sq. Ft,
 Open To Below: 40 sq. Ft, Walls: 202 sq. ft

Floor Plan Created By Cubicasa App. Measurements Deemed Highly Reliable But Not Guaranteed.



RESTAURANTS

- 1 Moretti's Ristorante and Pizzeria
1175 WEST LAKE STREET, 0.3 MI
- 2 Jimmy John's
1060 SOUTH SUTTON ROAD, 0.3 MI
- 3 Chili's Grill & Bar
1041 SOUTH SUTTON ROAD, 0.3 MI
- 4 Panera Bread
971 IRVING PARK ROAD, 0.5 MI
- 5 My Cocina Grill
43 SOUTH SUTTON ROAD, 1.2 MI
- 6 Rosati's Pizza
27 SOUTH SUTTON ROAD, 1.2 MI
- 7 McDonald's-Streamwood-O'Keefe Family Restaurants
91 WEST IRVING PARK ROAD, 1.2 MI
- 8 Subway
3 SOUTH SUTTON ROAD, 1.3 MI

COFFEE

- 9 Savoury Restaurant & Pancake Cafe
782 WEST BARTLETT ROAD, 1.3 MI
- 10 Sir Nick's Pizza & Catering Bartlett
105 EAST LAKE STREET, 1.4 MI
- 1 Starbucks Coffee Company
1001 SOUTH SUTTON ROAD, 0.4 MI
- 2 Dunkin'
656 SOUTH SUTTON ROAD, 0.5 MI
- 3 Starbucks Coffee Company
647 SOUTH SUTTON ROAD, 0.6 MI

SHOPPING

- 1 Target
1001 SOUTH SUTTON ROAD, 0.5 MI

GROCERY

- 1 Jewel-Osco
217 IRVING PARK ROAD, 1.5 MI

GYM

- 1 Anytime Fitness
71-77 EAST IRVING PARK ROAD, 1.4 MI

SCHOOLS

- 1 Streamwood High School
701 WEST SCHAUMBURG ROAD, 1.3 MI

TRANSIT

- 1 Bartlett METRA - MILWAUKEE DISTRICT WEST, 1.9 MI

PARKS

- 1 Veneto Park
1222 TUSCANY DRIVE, 0.2 MI
- 2 Forest Ridge Park
16 BLACK HILL DRIVE, 0.2 MI
- 3 Walnut Corner
768 CRAB TREE LANE, 0.3 MI
- 4 Peregrine Park
600 PEREGRINE PARKWAY, 0.4 MI

SERVICES

- 1 EPIC Urgent & Family Care - Streamwood
644 SOUTH SUTTON ROAD, 0.6 MI
- 2 Streamwood Fire Dept Sta 2
900 IRVING PARK ROAD, 0.6 MI



MEGAN CAMPBELL BARNITZ

(773) 544-9471

MEGANBARNITZ@ATPROPERTIES.COM

 Megan Barnitz Group

 | **CHRISTIE'S**
INTERNATIONAL REAL ESTATE