

1361 CAVELL AVENUE
HIGHLAND PARK





ROOM DIMENSIONS

LIVING ROOM : 27' × 12'
DINING ROOM : 11' × 11'
KITCHEN : 17' × 11'
FAMILY ROOM : 17' × 15'
PRIMARY BEDROOM : 18' × 14'
2ND BEDROOM : 13' × 12'
3RD BEDROOM : 13' × 12'
4TH BEDROOM : 11' × 10'
5TH BEDROOM (BASEMENT) : 14' × 13'
RECREATION ROOM : 38' × 12'

5 BEDROOM
3.1 BATH

WELCOME TO 1361 CAVELL AVENUE! Your clients will LOVE this newer construction 5-bedroom, 3.1-bath colonial that sits in the heart of the sought-after Sherwood Forest neighborhood in Highland Park. Thoughtfully designed with high-end finishes throughout, this home delivers both function and style. The main level offers an open, sun-filled layout. A bright front living room with oversized windows and a gas fireplace framed by built-in shelving flows seamlessly into the dining area, kitchen, and family room (or extra dining area)-perfect for everyday living or entertaining guests. The white chef's kitchen is a showstopper, featuring a massive island with seating, thick granite counters, professional-grade Wolf cooktop with custom hood, double ovens, Sub-Zero fridge, tons of cabinetry, and a walk-in pantry. A stylish powder room is tucked conveniently nearby. The spacious family room is surrounded by windows, has room for a large sectional, and opens directly to the backyard patio. Off the side entrance, you'll find a practical mudroom with tile flooring, built-in bench, and a generous closet. Upstairs includes four large bedrooms and two full baths. The primary suite features a walk-in closet and a luxurious spa-style bathroom with stone tile, dual vanities, a large glass shower with body sprays, and a freestanding soaking tub. The shared full bath includes dual sinks and a tub. Laundry is also conveniently located on this floor. The finished basement adds a huge recreation area with high ceilings, a fifth bedroom, and a full bathroom-great for guests, a home gym, or playroom. Extras include hardwood floors, Marvin windows, recessed lighting, dual-zone HVAC, and crown molding throughout. Outside, enjoy relaxing on the wraparound front porch or hosting on the brick paver patio in the fenced backyard. Two-car garage included. Quiet street, top-tier location, and within the coveted Choice Zone-attend either Highland Park or Deerfield High School. Close to parks, groceries, commuter routes AND SHOPPING GALORE! WELCOME HOME!!!!



© VHT STUDIOS





©VHT STUDIOS



©VHT STUDIOS



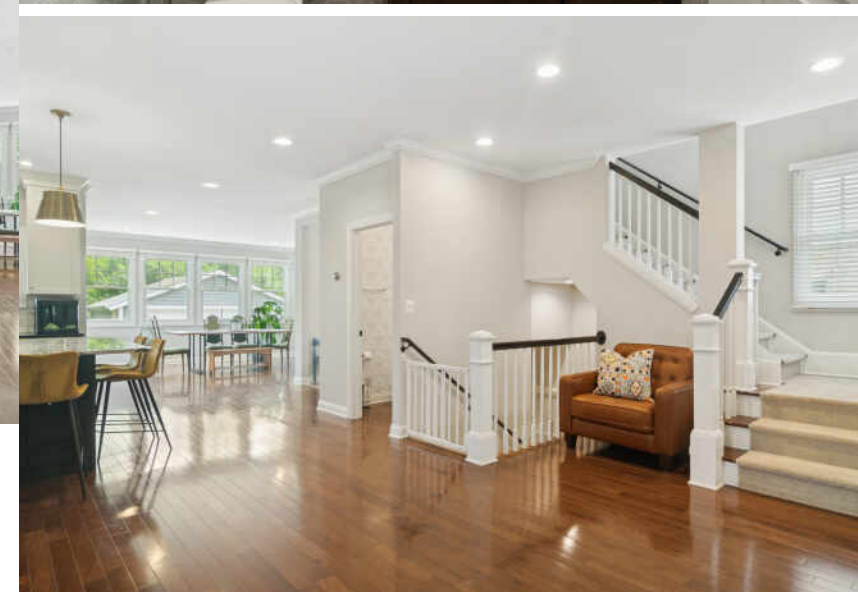
©VHT STUDIOS

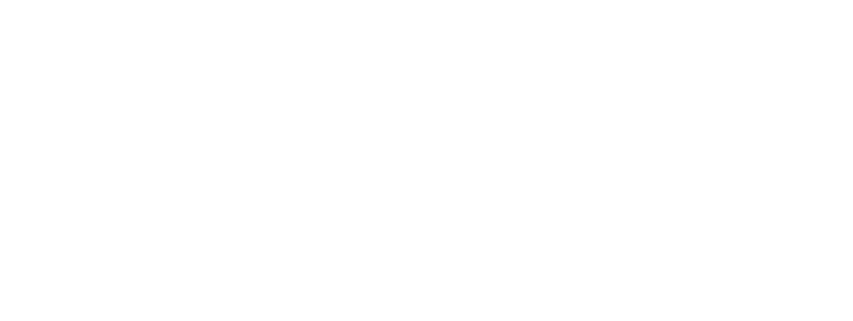


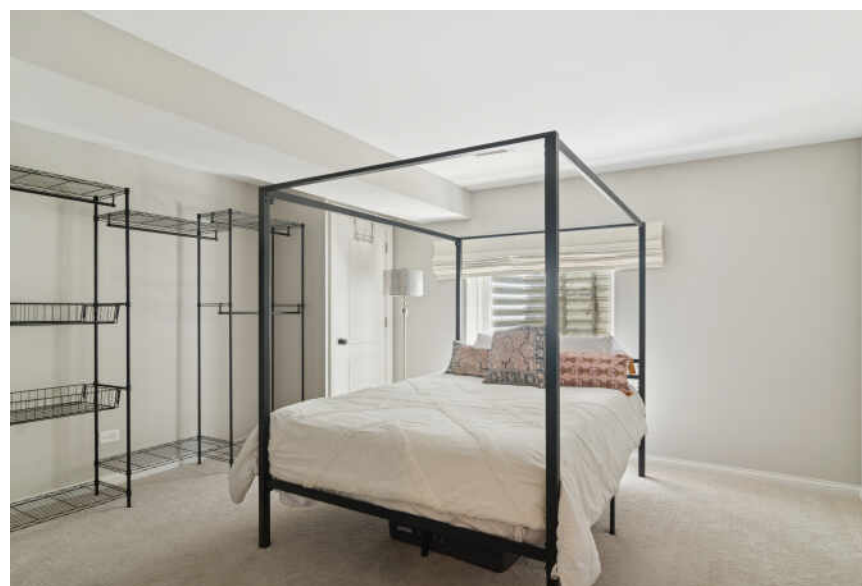
©VHT STUDIOS



©VHT STUDIOS









YOU HAD ME AT RAVINIA - YET THERE'S SO MUCH MORE TO LOVE ABOUT **HIGHLAND PARK.**

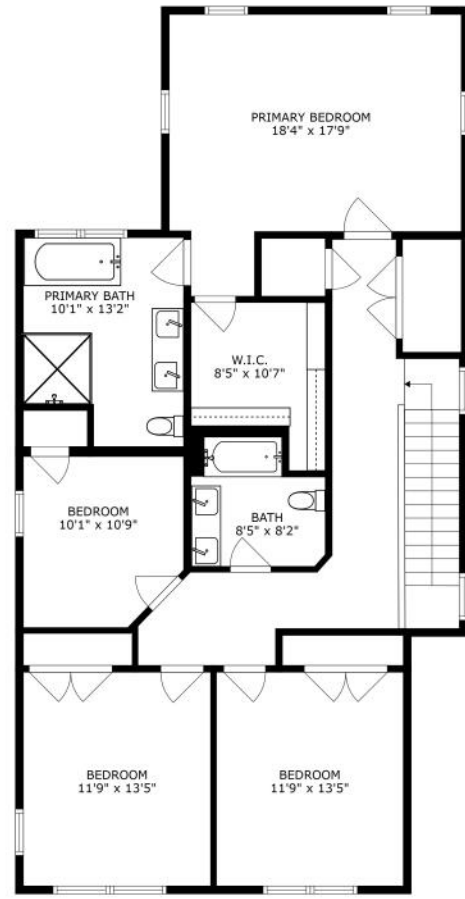
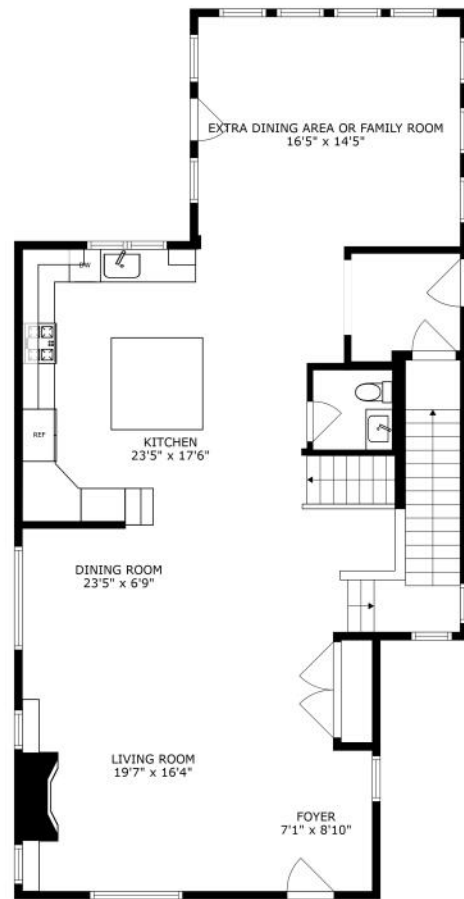
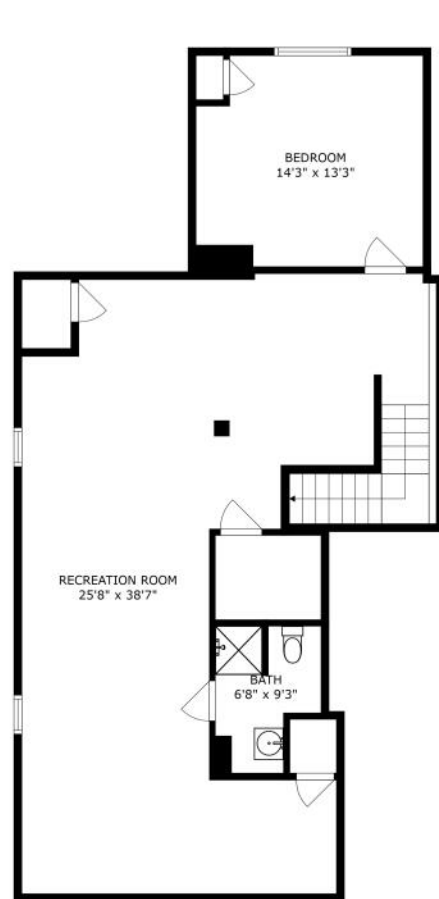
Located 23 miles north of downtown Chicago, Highland Park is known for its vibrant downtown business district, abundant recreational facilities, and world-class amenities.

The city is home to several landmarks, including homes designed by Frank Lloyd Wright. Highland Park also created the first community land trust in Illinois to develop and preserve high-quality affordable housing for residents.

High-end homes in Highland Park range from custom lakefront mansions to multi-million-dollar contemporary estates. Mid-century moderns and in-town bungalows are plentiful, while a number of luxury condominiums offer maintenance-free living close to downtown shops, restaurants, and commuter train stations.

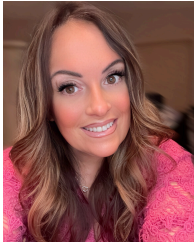
Residents enjoy two public beaches and the North Shore Yacht Club, a not-for-profit membership organization for sailors, kayakers, power boaters, and stand-up paddle boarders. Downtown Highland Park thrives year-round thanks to an eclectic mix of businesses including local restaurants, national retailers, and upscale boutiques.

Highland Park shines brightest in the summertime, when the sprawling outdoor Ravinia Festival welcomes the Chicago Symphony Orchestra and a diverse lineup of popular musicians. Ravinia attracts concert-goers from near and far, including locals and city-dwellers who can hop on the Metra train that conveniently stops at the festival gates.



SIZES AND DIMENSIONS ARE APPROXIMATE, ACTUAL MAY VARY.

NOTES



DENISE NABAT

1 8474144567

847-367-0500

DENISENABAT@ATPROPERTIES.COM

Denise Nabat
A HOUSE + ❤️ = HOME

Gina Shad
Team

@properties®

CHRISTIE'S
INTERNATIONAL REAL ESTATE