



138 N GRANT STREET HINSDALE



138 N GRANT STREET • HINSDALE

@properties | CHRISTIE'S  
INTERNATIONAL REAL ESTATE

LP LUXURY  
PORTFOLIO  
INTERNATIONAL



**BRYAN BOMBA** BROKER

630.286.9242 mobile  
bryan@bryanbomba.com  
www.hinsdalearearealestate.com

 **bryanbombagroup**



138 N GRANT STREET • HINSDALE





**138 N GRANT STREET** LUXURY LIVING REDEFINED: IMPECCABLY UPDATED  
RESIDENCE ON NORTH GRANT'S COVETED 100 BLOCK OFFERS MODERN ELEGANCE  
AND ULTIMATE COMFORT

**ROOM DIMENSIONS**

Living Room .....	15'x19'
Dining Room .....	15'x17'
Sun Room .....	9'x15'
Kitchen .....	20'x19'
Breakfast Nook .....	11'x16'
Family Room .....	12'x16'
Office .....	12'x9'
Mud Room .....	6'x12'
Laundry Room .....	6'x12'
Primary Bedroom .....	21'x22'
Bedroom Two .....	12'x12'
Bedroom Three .....	17'x15'
Bedroom Four .....	19'x14'
Loft .....	17'x15'
Recreation Room .....	24'x36'
Bedroom Five .....	12'x13'
Exercise Room .....	13'x12'

**FEATURES**

Indulge in perfection with this meticulously updated residence, flawlessly maintained for modern living. With a crisp, airy ambiance, the interior boasts a circa 2019 kitchen and fresh-looking bathrooms, showcasing the epitome of move-in readiness. Spectacular marvels await, from the architectural ceilings in the living and dining areas to the oversized owner's suite featuring a luxurious updated bathroom and dual walk-in closets. Functionality is paramount, with a first-floor office, mudroom, and laundry room. Imagine having an extra-deep two-car attached garage and an additional one-car detached garage transformed into an envy-inducing man cave complete with a bar, wood-burning stove, and entertainment hub. Outside, the 82 x 205 lot beckons with mature trees, lush landscaping, and breathtaking outdoor living spaces. Nestled on the coveted 100 block of North Grant, this residence epitomizes the convenience of in-town living.



**BRYAN BOMBA** BROKER

630.286.9242 mobile

bryan@bryanbomba.com  
www.hinsdalearearealestate.com







































































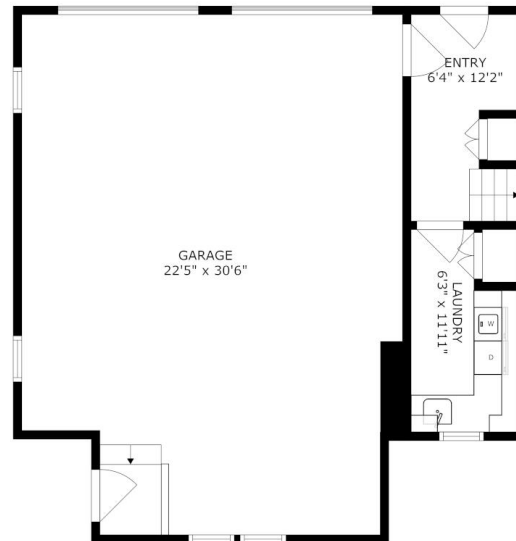




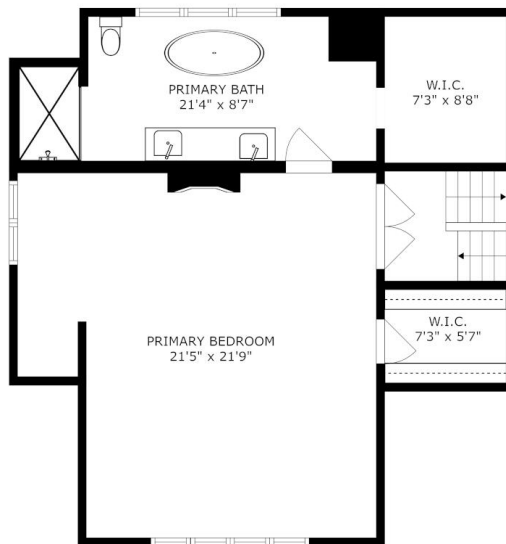




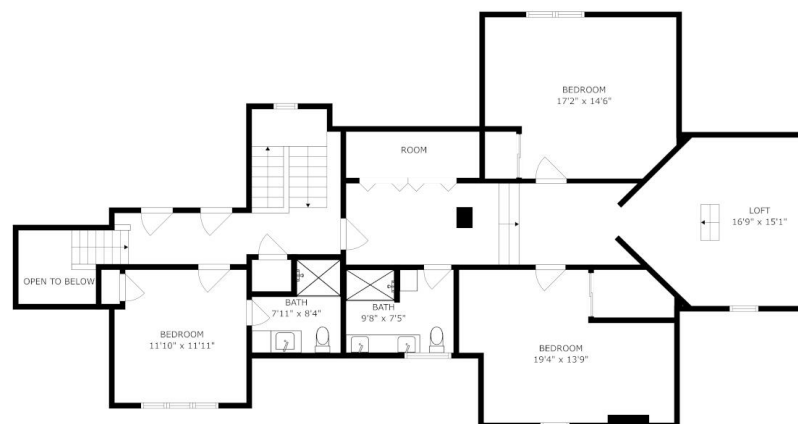
SIZES AND DIMENSIONS ARE APPROXIMATE, ACTUAL MAY VARY.



SIZES AND DIMENSIONS ARE APPROXIMATE, ACTUAL MAY VARY.

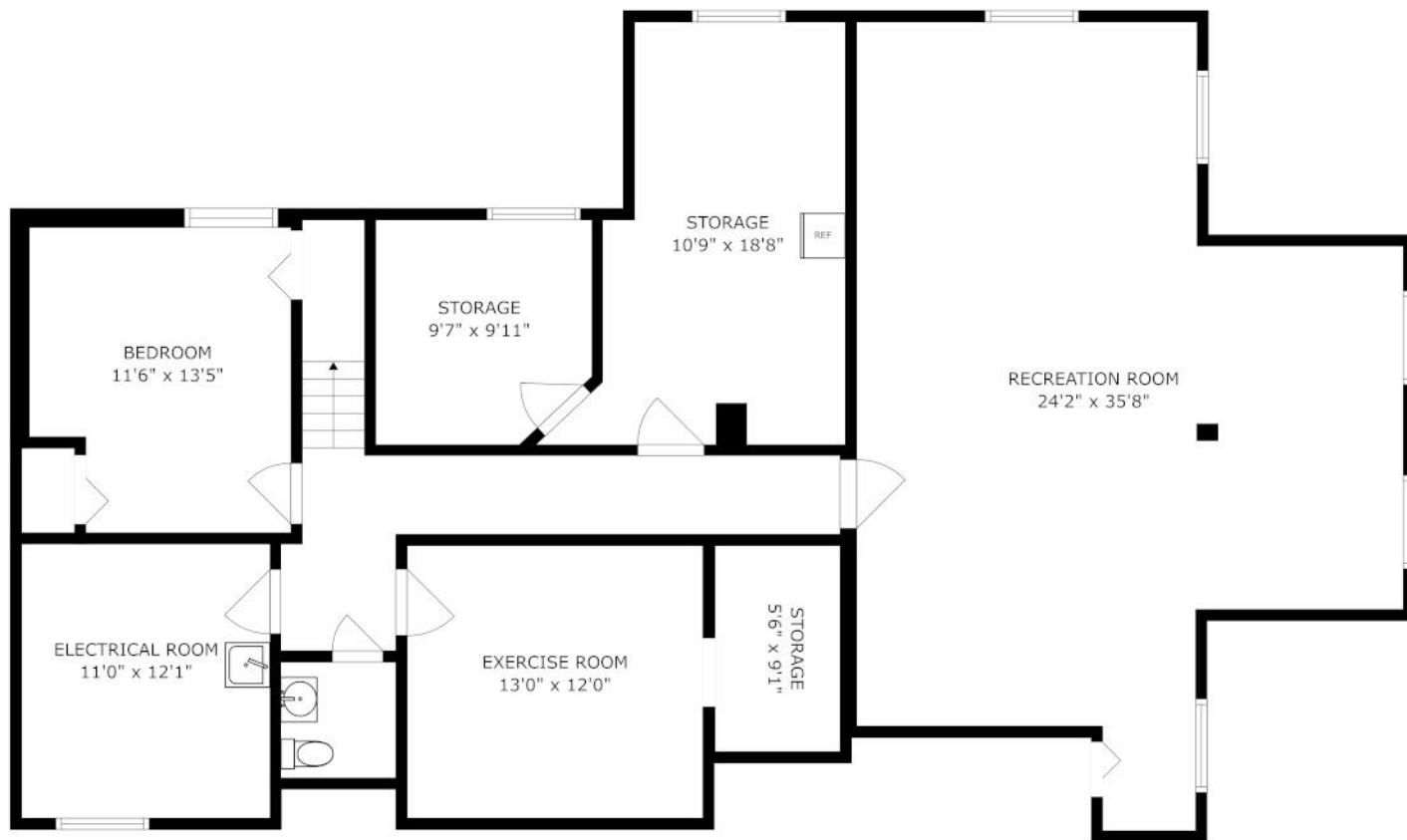


SIZES AND DIMENSIONS ARE APPROXIMATE, ACTUAL MAY VARY.

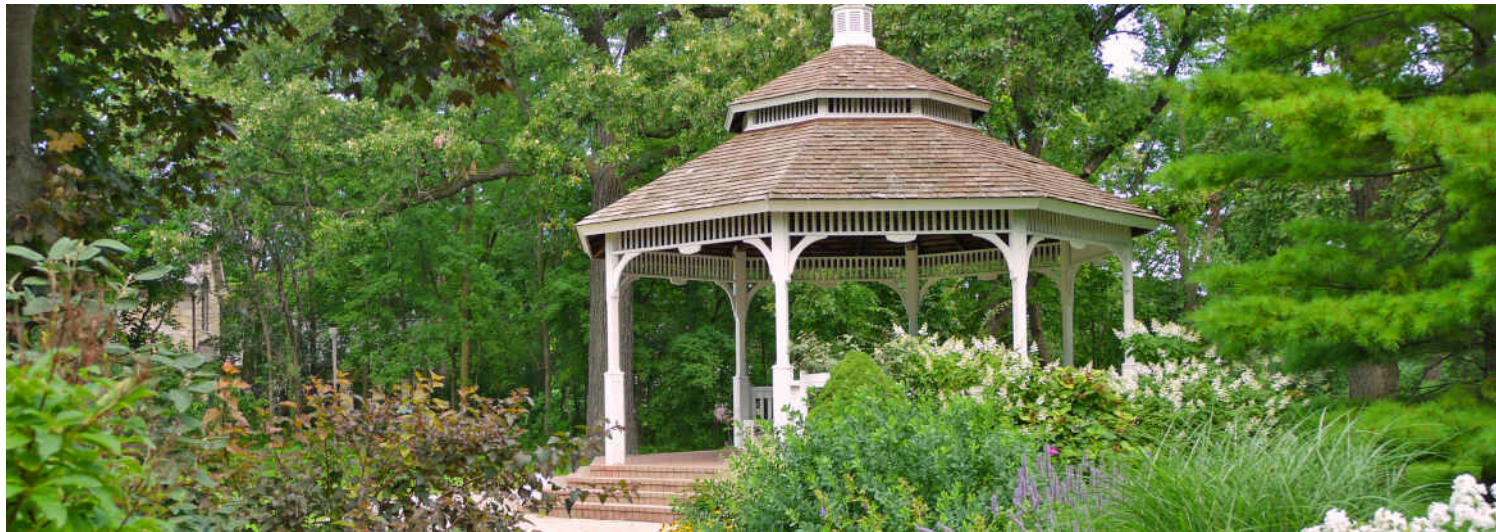


SIZES AND DIMENSIONS ARE APPROXIMATE, ACTUAL MAY VARY.





SIZES AND DIMENSIONS ARE APPROXIMATE, ACTUAL MAY VARY.



**HINSDALE’S** HISTORIC DOWNTOWN AND BEAUTIFUL HOMES ATTRACT SOME OF THE STATE’S MOST AFFLUENT RESIDENTS, EARNING THE SUBURB ITS RANKING AS ONE OF THE WEALTHIEST ZIP CODES IN ILLINOIS.

*Locals love the natural beauty and historic elegance of Hinsdale, which boasts a number of scenic parks and architectural landmarks.*

Downtown Hinsdale offers a step back in time. The downtown district is on the National Register of Historic Places, with several historic buildings dating back to before the community was incorporated in the 1870s. Residents and visitors will also find award-winning restaurants that will satisfy any palate along with a variety of shops, from jewelry stores and upscale boutiques to craft shops and more.

The community has a wealth of amenities such as the Hinsdale Community Swimming Pool, Katherine Legge Memorial Park, and Burlington Park, which is home to various annual events including the farmers market, Fine Arts Festival, and Uniquely Thursdays concert series. There are also numerous parks and athletic facilities for those who enjoy sports like tennis, baseball, and soccer.

Hinsdale has easy access to the Tri-State Tollway, Stevenson Expressway, and three train stations along Metra’s BNSF Railway.









