

14006 CAMDEN DRIVE
ORLAND PARK



@properties®

CHRISTIE'S
INTERNATIONAL REAL ESTATE



ROOM DIMENSIONS

LIVING ROOM : 15' × 20'

DINING ROOM : 13' × 12'

KITCHEN : 19' × 12'

FAMILY ROOM : 13' × 20'

KITCHEN EATING AREA : 14' × 13'

PRIMARY BEDROOM : 14' × 15'

2ND BEDROOM : 15' × 12'

3RD BEDROOM : 14' × 12'

LAUNDRY ROOM : 6' × 9'

BASEMENT : 29' × 36'

3 BEDROOM

2.5 BATH

TAXES: \$9788.89

ELEVATED RANCH RETREAT WITH TIMELESS DESIGN

Step into a home that welcomes you the moment you arrive, where a spacious foyer sets the tone for easy, comfortable living. Just off the entry, a bright living room with soaring cathedral ceilings flows seamlessly into the dining room, creating a natural space to gather, celebrate, and make memories.

At the heart of the home, the kitchen brings everything together. With a generous eating area and sliding doors that open to a large concrete patio, it invites you to imagine morning coffee in the sunshine and evenings spent outdoors. Just beyond, the family room offers a warm and inviting retreat, where a vaulted ceiling and wood-burning fireplace create the perfect setting to relax and unwind.

Down the hall, you will find three well-sized bedrooms and a full bath, thoughtfully placed for both privacy and convenience. The primary suite feels like its own escape, complete with a spacious walk-in closet and a private full bath designed for everyday comfort.

The unfinished basement opens the door to endless possibilities, with a massive crawl space providing exceptional storage. Near the front of the home, a freshly painted laundry room, half bath, and garage entry add to the home's functionality and ease of living.

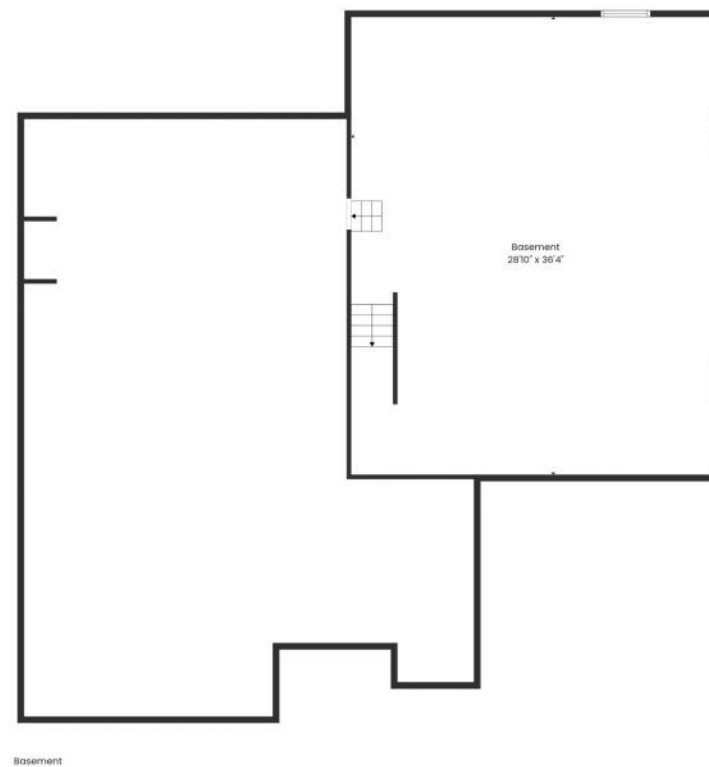
This is a home designed for real life, where every space feels connected, welcoming, and ready for the next chapter.

- Full ranch home with open, functional layout
- 3 bedrooms, 2 full baths, 1 half bath
- Cathedral ceiling living room + formal dining room
- Vaulted family room with wood-burning fireplace
- Central kitchen with large eating area & patio access









Measurements Deemed Highly Reliable But Not Guaranteed.



WITH AN ABUNDANCE OF PARKS AND A GROWING SHOPPING AND DINING SCENE, **ORLAND PARK** IS ONE OF THE MOST SOUGHT-AFTER PLACES TO LIVE IN CHICAGO'S SOUTH SUBURBS.

The village has a population of nearly 60,000 and appeals to those looking for a vibrant, tight-knit community in close proximity to the city of Chicago. Parks, trails, and golf courses abound, offering plenty of recreational opportunities for outdoorsy types. In the summer, Lake Sedgewick is the premier place to explore, fish, and boat, with pedal boats and kayaks available for rent. The Centennial Park Aquatic Center is another popular spot where residents can cool off in the pool or play a game of volleyball. Athletic fields and seasonal events are also hosted at Centennial Park.

When it comes to live entertainment, there are several nearby attractions including the Hollywood Casino Amphitheatre - one of Chicagoland's largest outdoor music venues - located in Tinley Park. Even closer to home is the Orland Park Theatre Troupe, which has been putting on an array of productions for locals to enjoy since 1993.

Approximately a 27-mile drive from downtown Chicago, Orland Park offers convenient access to I-294, I-355, I-57, and I-80. Commuters are just a train ride away from the city thanks to Metra's SouthWest Service line, which has a stop in Orland Park.



LINDA SCHAVER

LICENSED IN ILLINOIS AND INDIANA

815-383-0374

LINDASCHAVER@ATPROPERTIES.COM

WWW.LINDASCHAVER.COM

