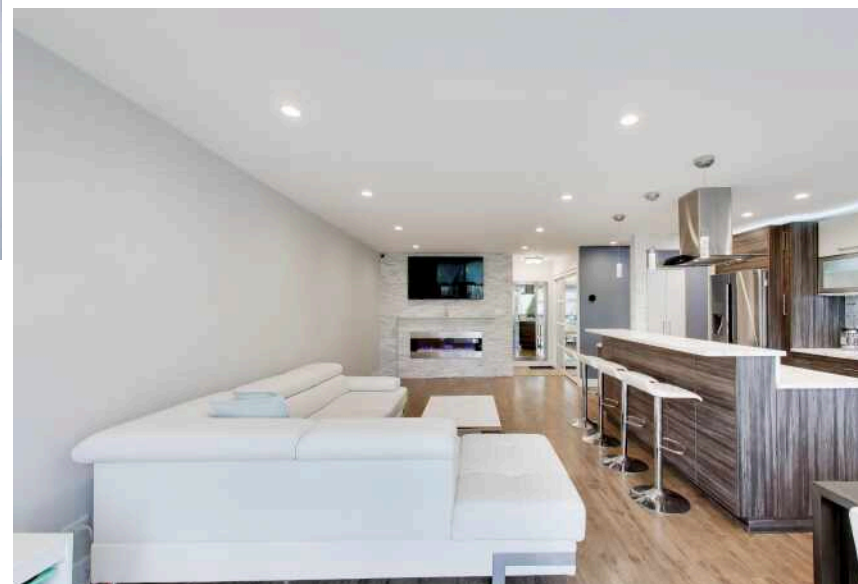
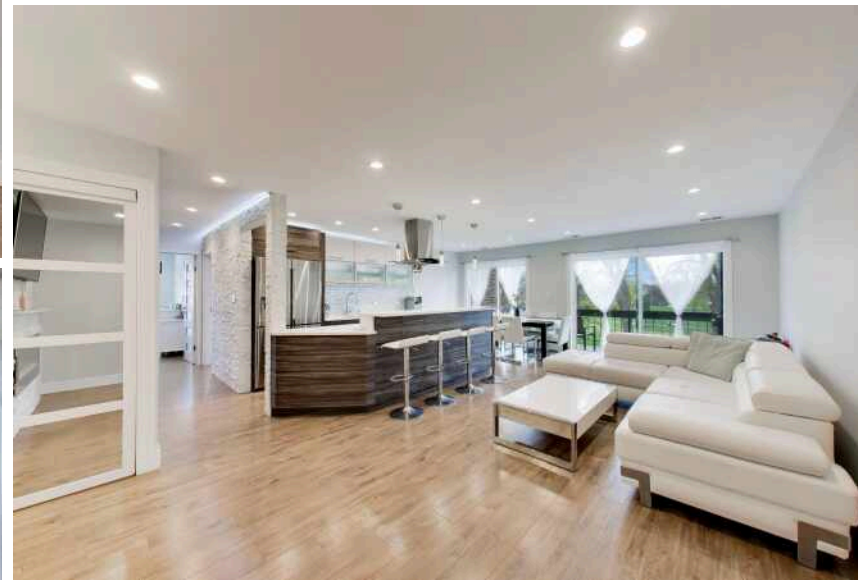
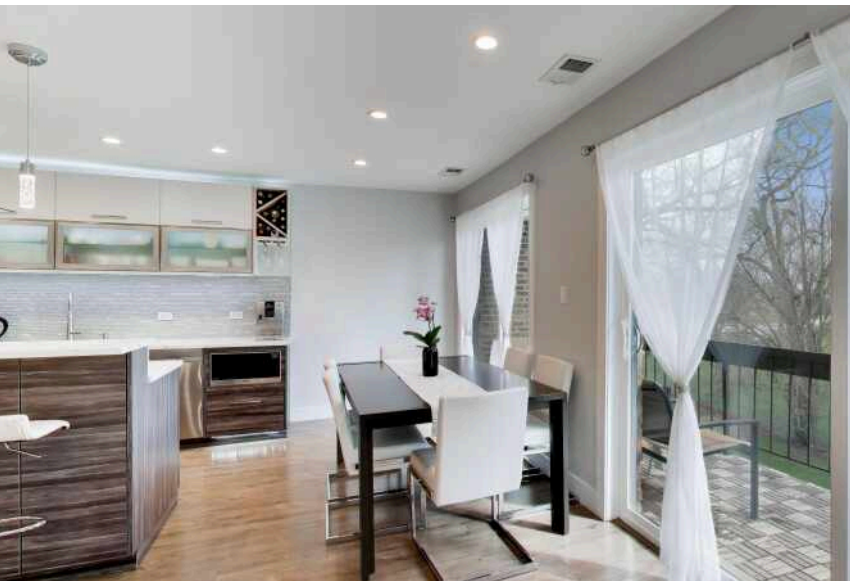


1400 N ELMHURST ROAD #319
MOUNT PROSPECT





ROOM DIMENSIONS

LIVING ROOM : 24' x 12'

DINING ROOM : 9' x 8'

KITCHEN : 12' x 9'

PRIMARY BEDROOM : 18' x 12'

2ND BEDROOM : 12' x 10'

FOYER : 4' x 4'

WELCOME HOME

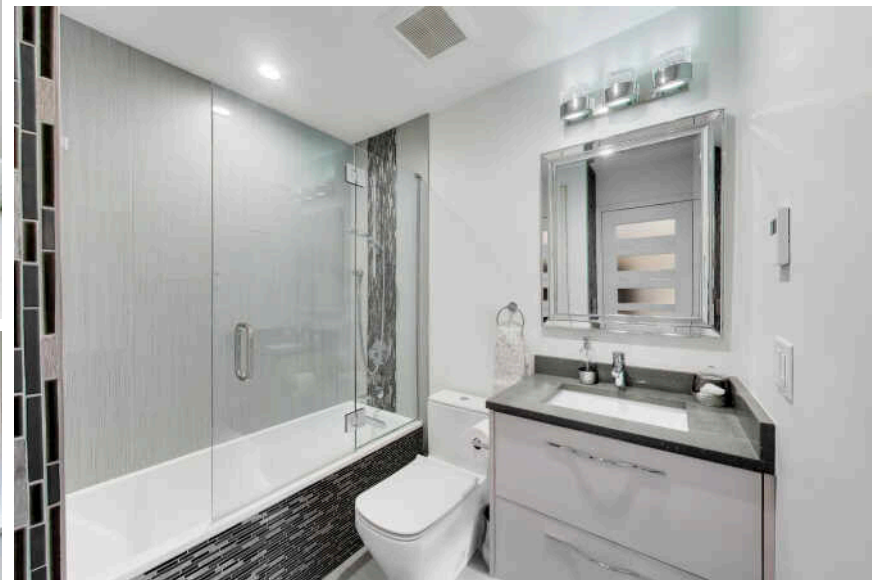
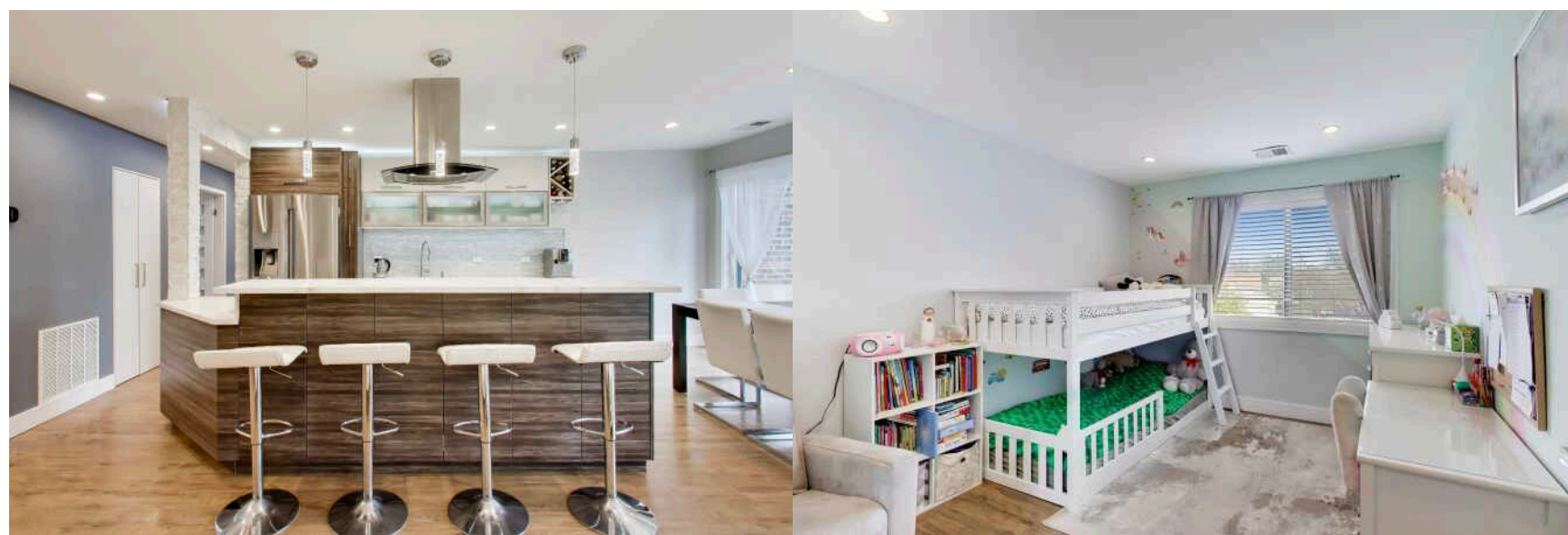
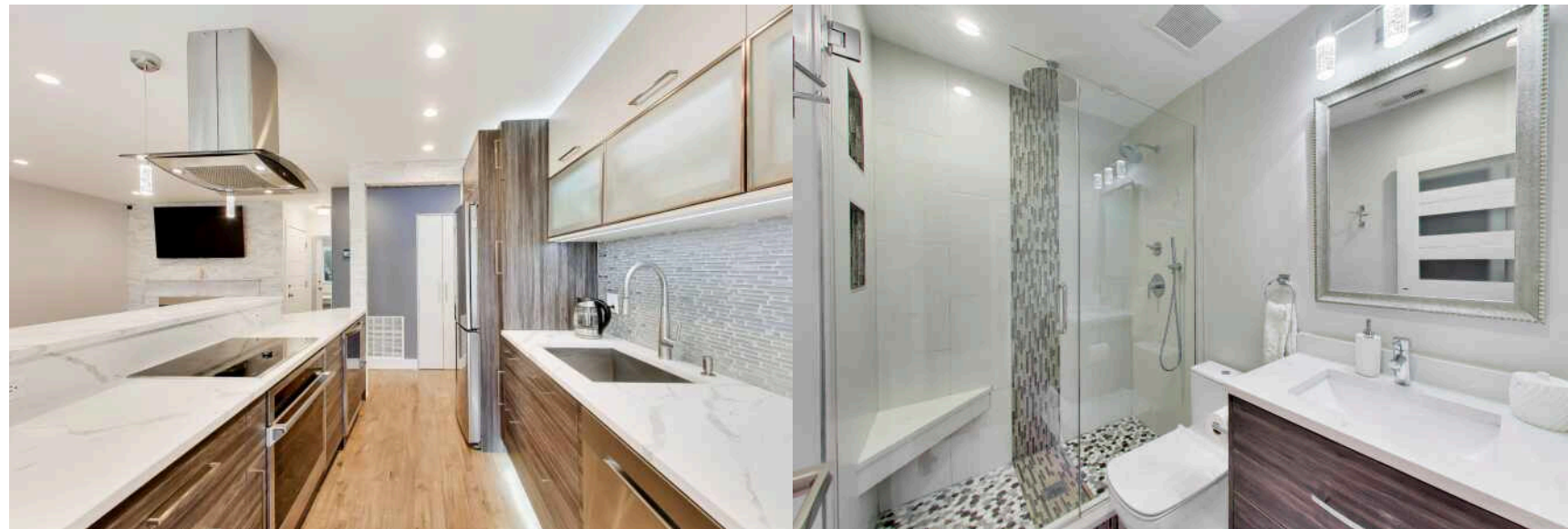
Step into this light-filled luxury 3rd-floor corner unit featuring one of the largest floor plans in the building, offering 2 bedrooms and 2 bathrooms thoughtfully designed for both comfort and sophistication. This is not your typical rehab - this was the contractor's personal residence, meticulously reimagined in 2018 with top-of-the-line finishes and exceptional attention to detail throughout. The open-concept layout offers a seamless flow, anchored by a stunning chef's kitchen complete with high-end stainless steel appliances, custom cabinetry, quartz countertops, a wine cooler, and a large island perfect for entertaining. The kitchen opens to a spacious dining and living area featuring a wall-mounted electric fireplace and newer patio doors that lead to a large private balcony with desirable southeast exposure and breathtaking golf course views. The primary suite is a true retreat, offering a generous walk-in closet and a beautifully appointed en-suite bathroom. Both bathrooms feature heated floors, and recessed lighting enhances the modern feel throughout. Additional highlights include an elevator building, same-floor dedicated storage locker, convenient laundry room, and abundant parking. Residents enjoy resort-style amenities, including indoor and outdoor swimming pools, a fitness center, and a party room. Ideally located just moments from Old Orchard Golf Course and the vibrant Randhurst Shopping District, with easy access to dining, shopping, and entertainment. Situated within the highly sought-after John Hersey High School district, this exceptional home offers the perfect blend of luxury, location, and lifestyle.

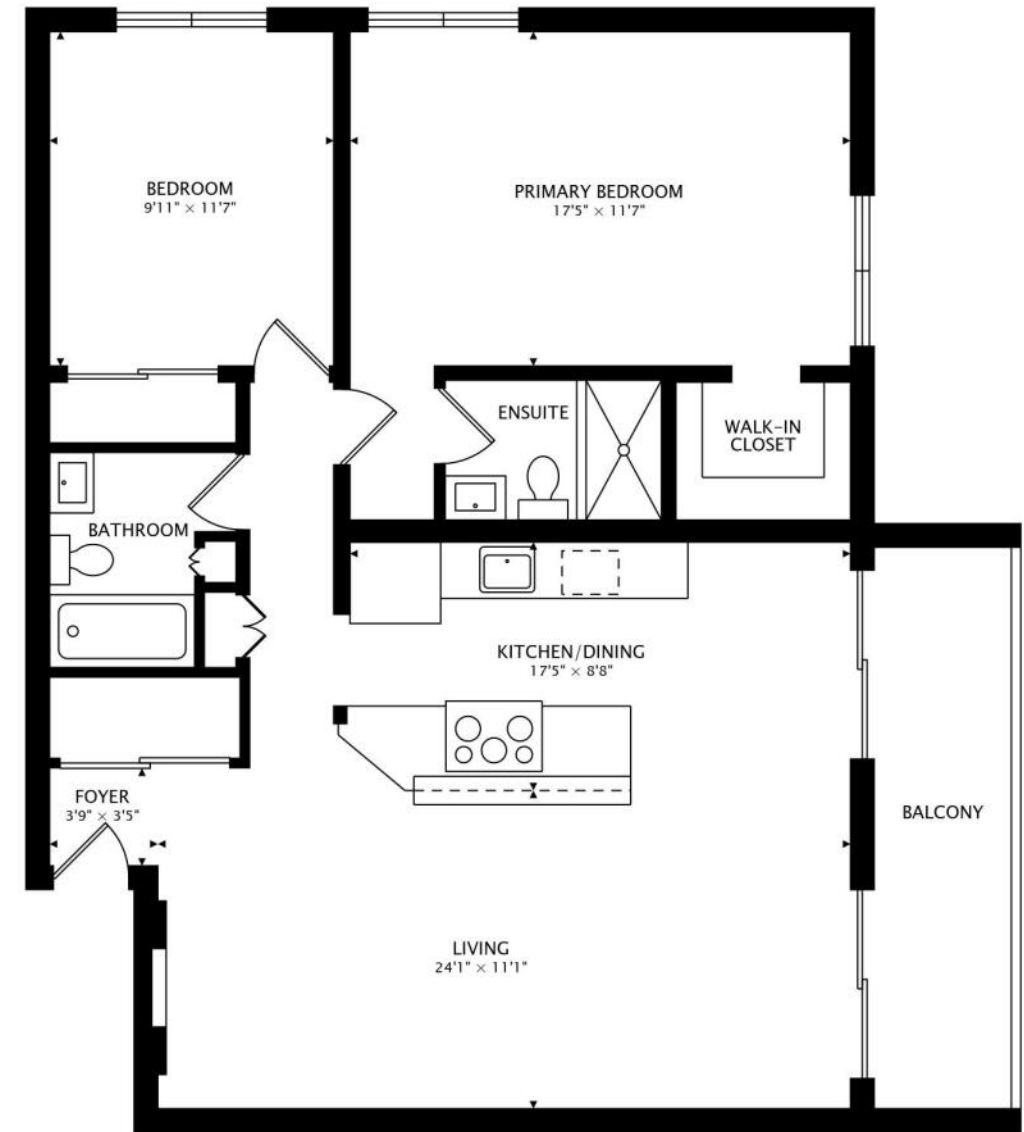
2 BEDROOM

2 BATH

TAXES: \$3,200

ASSESSMENTS: \$537





1200 sq ft



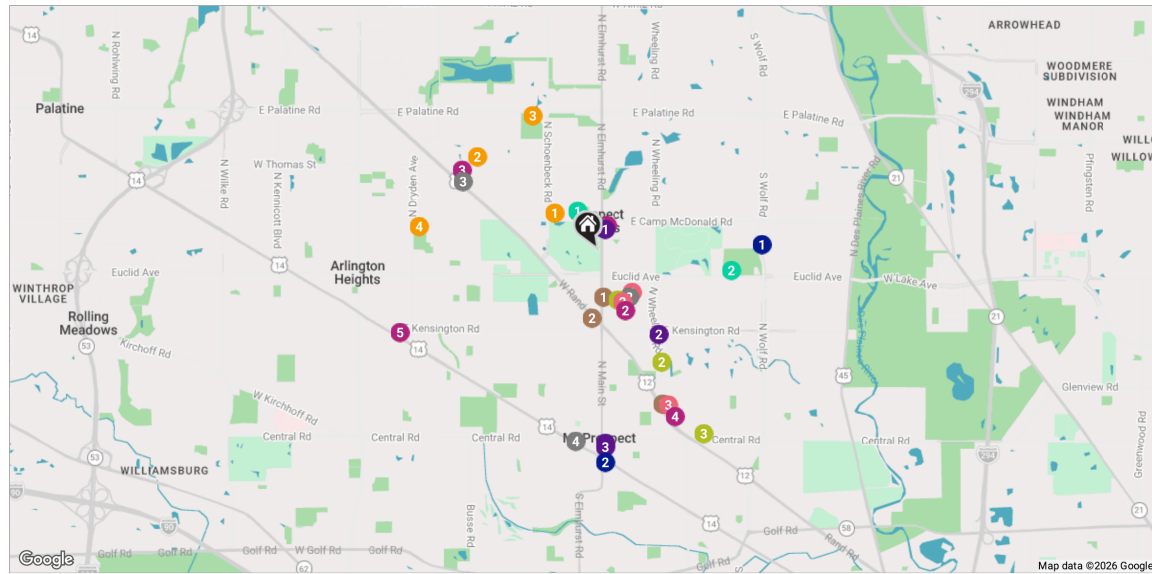
THE VILLAGE OF **MOUNT PROSPECT** IS A NATIONALLY ACCLAIMED COMMUNITY WITH SMALL-TOWN CHARM AND TREE-LINED STREETS.

Once rated one of the “Top 50 Places to Live” in the United States by *Money* magazine, Mount Prospect is known for its great housing, tight-knit community, and outstanding services.

The village is 20 miles northwest of downtown Chicago and boasts approximately 400 acres of parks and recreation facilities, including four park districts. Residents enjoy an outdoor wave pool, two golf courses, a miniature golf course, outdoor skating rinks, playgrounds, sports fields, and tennis courts.

The downtown features brick-paved streetscapes, wrought-iron lamp posts, and colorful flowers and landscaping. It’s also the site of row houses, townhomes, and condominiums as well as restaurants, entertainment, retail, spas, and service providers. Every summer, the Mount Prospect Chamber of Commerce invites residents and guests to enjoy music, food, and fun at the annual Mount Prospect Downtown Block Party. Fridays on the Green help residents take advantage of the warm weather with free outdoor concerts throughout the summer.

Residents have access to public transportation via Metra and Pace.



RESTAURANTS

- 1 Lou Malnati's Pizzeria
1504 NORTH ELMHURST ROAD, 0.2 MI
- 2 Blackfinn Randhurst Grill
157 RANDHURST VILLAGE DRIVE, 0.5 MI
- 3 Naomi Sushi
1309 EAST RAND ROAD, 1.4 MI
- 4 Trezeros Kitchen + Tap
302 WEST NORTHWEST HIGHWAY, 1.8 MI

- 2 Costco Wholesale
999 NORTH ELMHURST ROAD, 0.6 MI
- 3 Target
1700 EAST RAND ROAD, 1.5 MI
- 4 Walmart Supercenter
930 MOUNT PROSPECT PLAZA, 1.7 MI
- 5 Mariano's
802 EAST NORTHWEST HIGHWAY, 2.0 MI

- 2 John Hersey High School
NORTHWEST SUBURBS, 1.4 MI
- 3 MacArthur Middle School
700 NORTH SCHOENBECK ROAD, 1.4 MI
- 4 St Viator High School
1213 EAST OAKTON STREET, 1.7 MI

PARKS

- 1 Lions Park
110 WEST CAMP MCDONALD ROAD, 0.4 MI
- 2 River Trails Park District
1500 EAST EUCLID AVENUE, 1.2 MI

GYM

- 1 Orangetheory Fitness
1032 CENTER DRIVE DS, 0.5 MI
- 2 The Zone River Trails Park District
550 EAST BUSINESS CENTER DRIVE, 1.2 MI
- 3 LA Fitness
1145 MOUNT PROSPECT PLAZA, 1.9 MI

ENTERTAINMENT

- 1 AMC Randhurst 12
200 RANDHURST VILLAGE DRIVE, 0.5 MI
- 2 Randhurst Village
1 RANDHURST VILLAGE DRIVE, 0.5 MI
- 3 Bowlero Mount Prospect
824 E RAND RD, 1.6 MI

SERVICES

- 1 United States Postal Service
9 SOUTH ELMHURST ROAD, 0.2 MI
- 2 US Social Security Administration
705 NORTH WHEELING ROAD, 1.0 MI
- 3 Village Of Mount Prospect
50 SOUTH EMERSON STREET, 1.8 MI
- 4 Mount Prospect Public Library
10 SOUTH EMERSON STREET, 1.8 MI

COFFEE

- 1 Panera Bread
1065 NORTH ELMHURST ROAD, 0.4 MI
- 2 Starbucks Coffee Company
195 WEST RAND ROAD, 0.6 MI
- 3 Dunkin'
820 EAST RAND ROAD, 1.5 MI

TRANSIT

- 1 Prospect Heights
METRA - NORTH CENTRAL SERVICE, 1.5 MI
- 2 Mt Prospect
METRA - UNION PACIFIC NORTHWEST, 1.9 MI

SHOPPING

- 1 Deli 4 You Market
9 EAST CAMP MCDONALD ROAD, 0.3 MI

SCHOOLS

- 1 Dwight D. Eisenhower Elementary School
1 N SCHOENBECK RD, 0.5 MI

NOTES



PETER BELLERT

BROKER

M: 773.860.6955

PBELLERT@ATPROPERTIES.COM

BELLERTHOMES.COM



PETER BELLERT



TAMARA BOROWIEC

BROKER

M: 773.882.0823

TBOROWIEC@ATPROPERTIES.COM