



1408 HUNTINGTON DRIVE · GLENVIEW



@properties | CHRISTIE'S  
INTERNATIONAL REAL ESTATE

LUXURY  
PORTFOLIO  
INTERNATIONAL



SHARON FRIEDMAN BROKER

847.867.0052 mobile  
847.892.4800 office  
sharonfriedman@atproperties.com

SHARON FRIEDMAN  
A PROVEN LEADER



COURTNEY COOK BROKER

773.655.3354 mobile  
847.881.0200 office  
courtneycCook@atproperties.com  
www.courtneycCookrealestate.com

COURTNEY COOK



1408 HUNTINGTON DRIVE • GLENVIEW





FRONT VIEW

1408 HUNTINGTON DRIVE GLENVIEW

ROOM DIMENSIONS

Living Room/Office .....	13'x12'
Dining Room .....	13'x12'
Kitchen .....	14'x14'
Family Room .....	22'x16'
Primary Bedroom .....	22'x16'
2nd Bedroom .....	17'x15'
3rd Bedroom .....	13'x12'
4th Bedroom .....	15'x12'
5th Bedroom .....	12'x11'
Gym .....	12'x12'
Recreation Room .....	35'x20'
Laundry Room .....	10'x7'

FEATURES

Exceptional east Glenview new construction just completed and ready for occupancy! This sophisticated urban farmhouse boasts 5+ bedrooms, 5 full baths, and the winning combination of a thoughtful sun filled layout and stunning on trend luxury designer finishes throughout all 3 levels. Set on a wide 75 x 126 (9370 sf) wooded and handsomely landscaped lot on a lovely tree lined street in a charming neighborhood with many newer construction homes. This ideal location is just steps to Lyon Elementary School and playlot and incredible shopping, bars and restaurants. This home features 3800 sq ft of finished first and second floors plus 1400 square feet of finished lower level (5200 Sq ft total) with attached extra large 2 car garage. First floor: covered front porch, entry foyer, living room/flex room (can be office, music room or bedroom 6 with double doors and closet), full bath, dining room, butler's pantry with fridge, kitchen with large island, two full sized refrigerator freezers, ample eating area, family room with built ins and fireplace, guest closet, mud room with closet and cubbies. Second level: large primary suite featuring double tray ceiling, generous walk in closet and luxurious bathroom, private guest suite with soaring vaulted ceiling and ensuite bath, two additional bedrooms with Jack and Jill bath, full laundry room with 2 sets washer/dryer. Lower level: recreation room or 2nd family room with wet bar and fridge, 6th bedroom, full bath, exercise room, storage and mechanicals. Maintenance free Hardie Board exterior, heated primary bath floor, hardwood floors on first and second levels, wood slat feature wall in primary bedroom and dining room, fully outfitted closets, ZLine kitchen appliances, 22 x 14 patio, fully fenced



SHARON FRIEDMAN BROKER

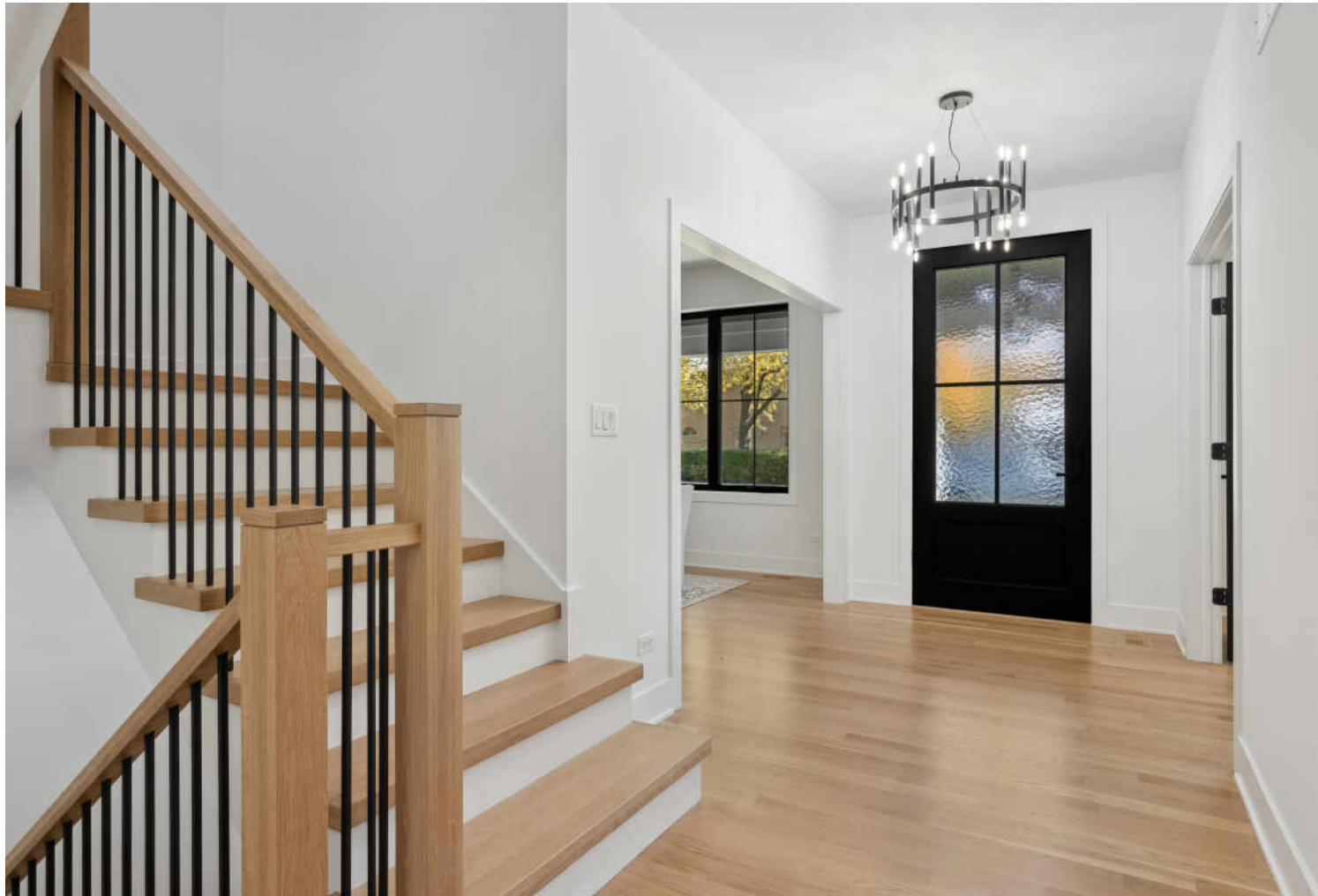
847.867.0052 mobile  
847.892.4800 office  
sharonfriedman@atproperties.com



COURTNEY COOK BROKER

773.655.3354 mobile  
847.881.0200 office  
courtneycook@atproperties.com  
www.courtneycookrealestate.com





ENTRYWAY



DINING ROOM



BUTLERS PANTRY



1ST FLOOR OFFICE OR LIVING ROOM



KITCHEN



KITCHEN



KITCHEN



KITCHEN





KITCHEN



FAMILY ROOM / KITCHEN

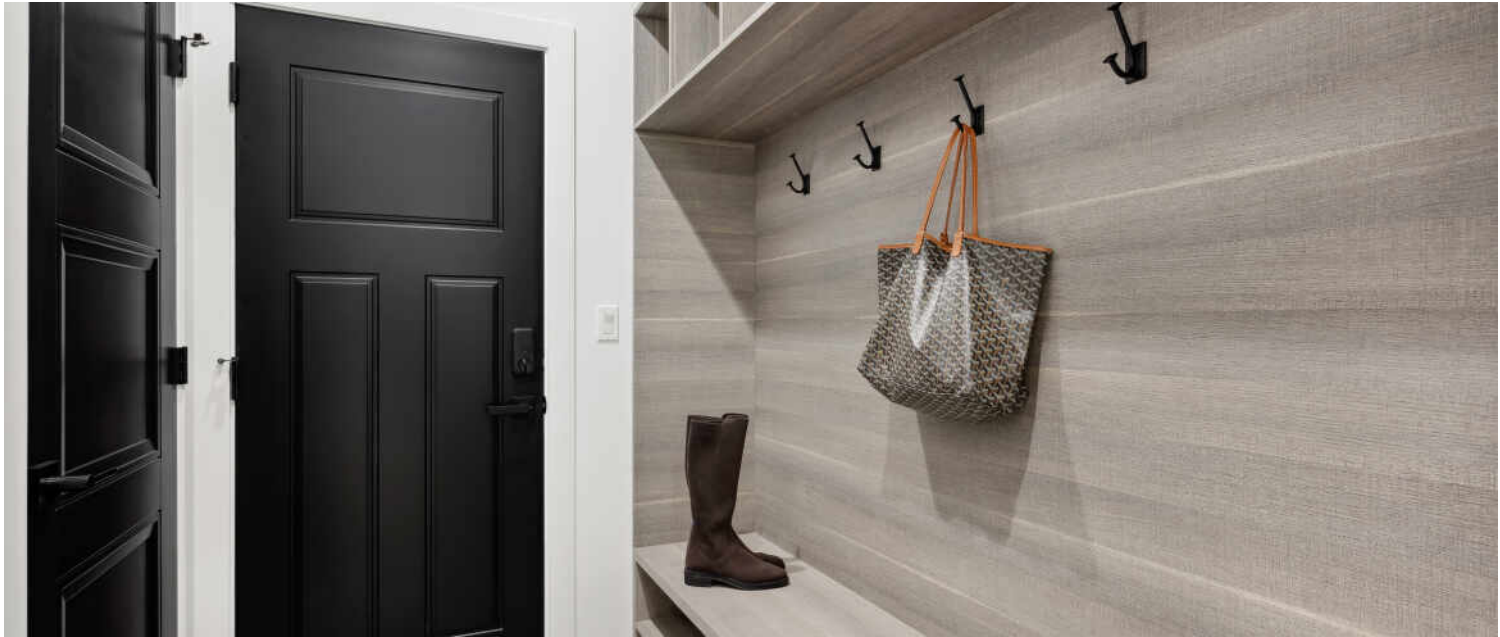




FAMILY ROOM



FAMILY ROOM



MUDROOM

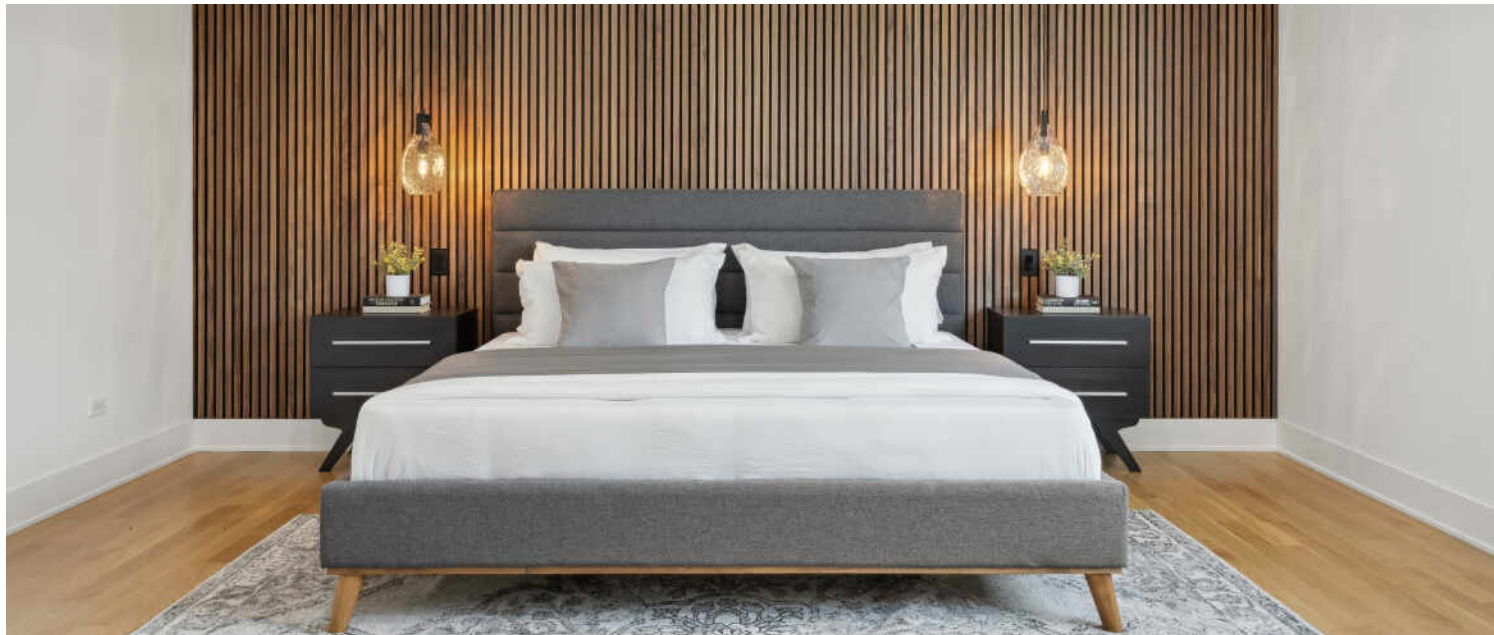


1ST FLOOR FULL BATHROOM





PRIMARY BEDROOM



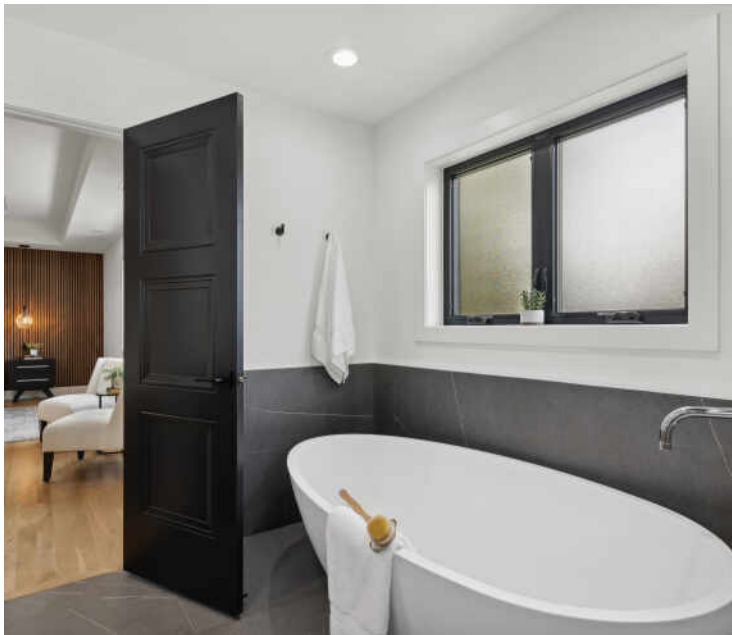
PRIMARY BEDROOM



PRIMARY BATHROOM



PRIMARY BATHROOM



PRIMARY BATHROOM



PRIMARY BEDROOM CLOSET





2ND BEDROOM



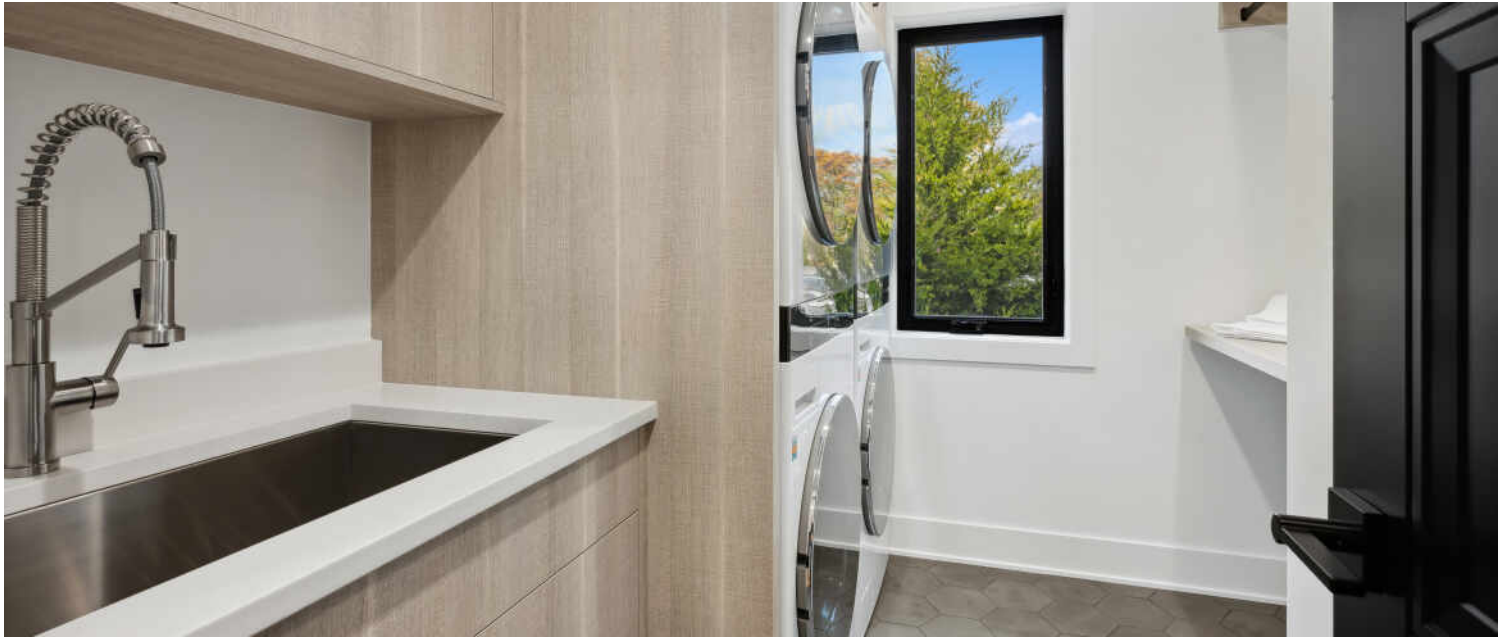
3RD BEDROOM



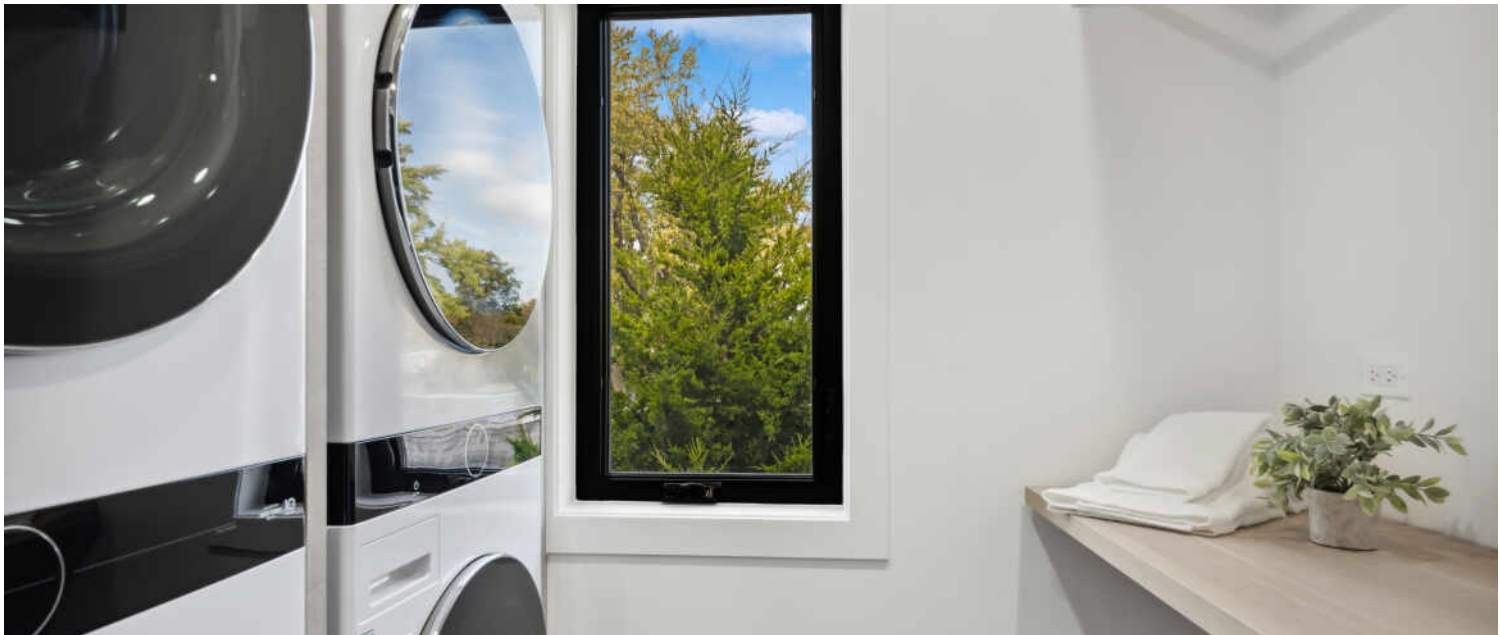
4TH BEDROOM



5TH BEDROOM



2ND FLOOR LAUNDRY



2ND FLOOR LAUNDRY

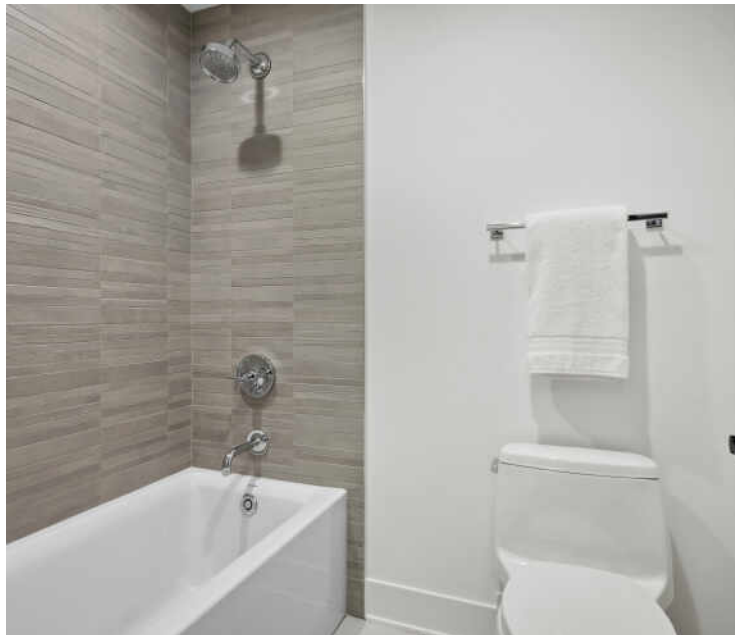




3RD BATHROOM



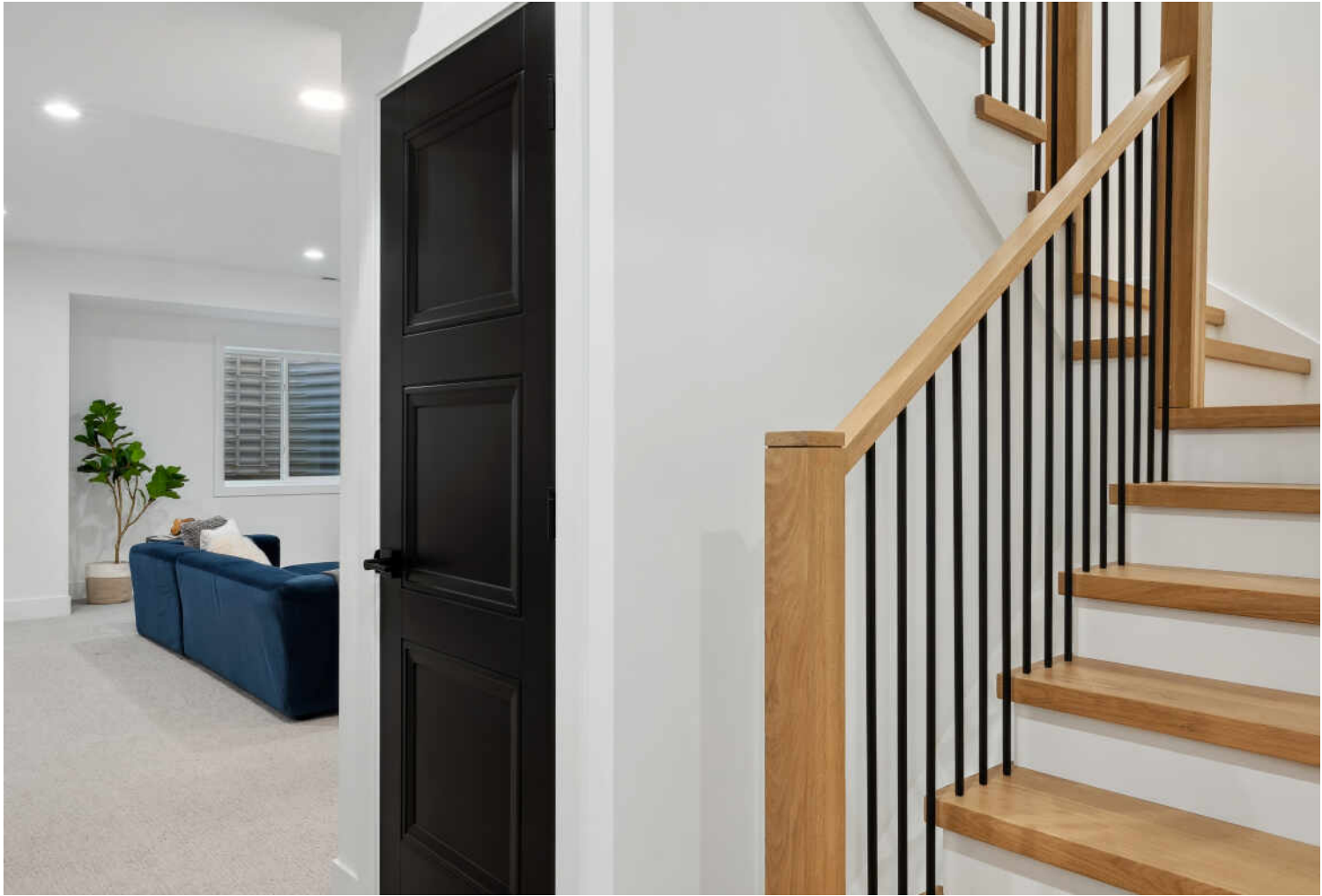
4TH BATHROOM



4TH BATHROOM



5TH BATHROOM



STAIRCASE

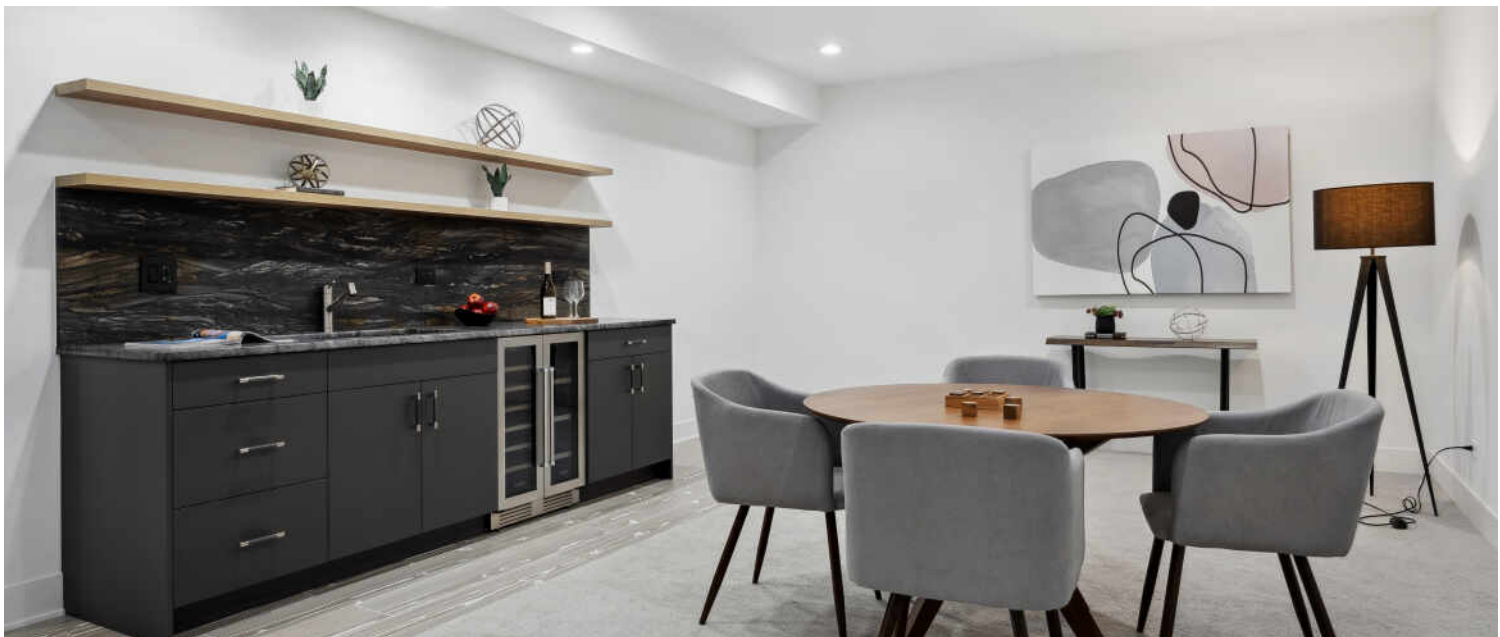


PLAY / RECREATIONAL ROOM





RECREATIONAL ROOM

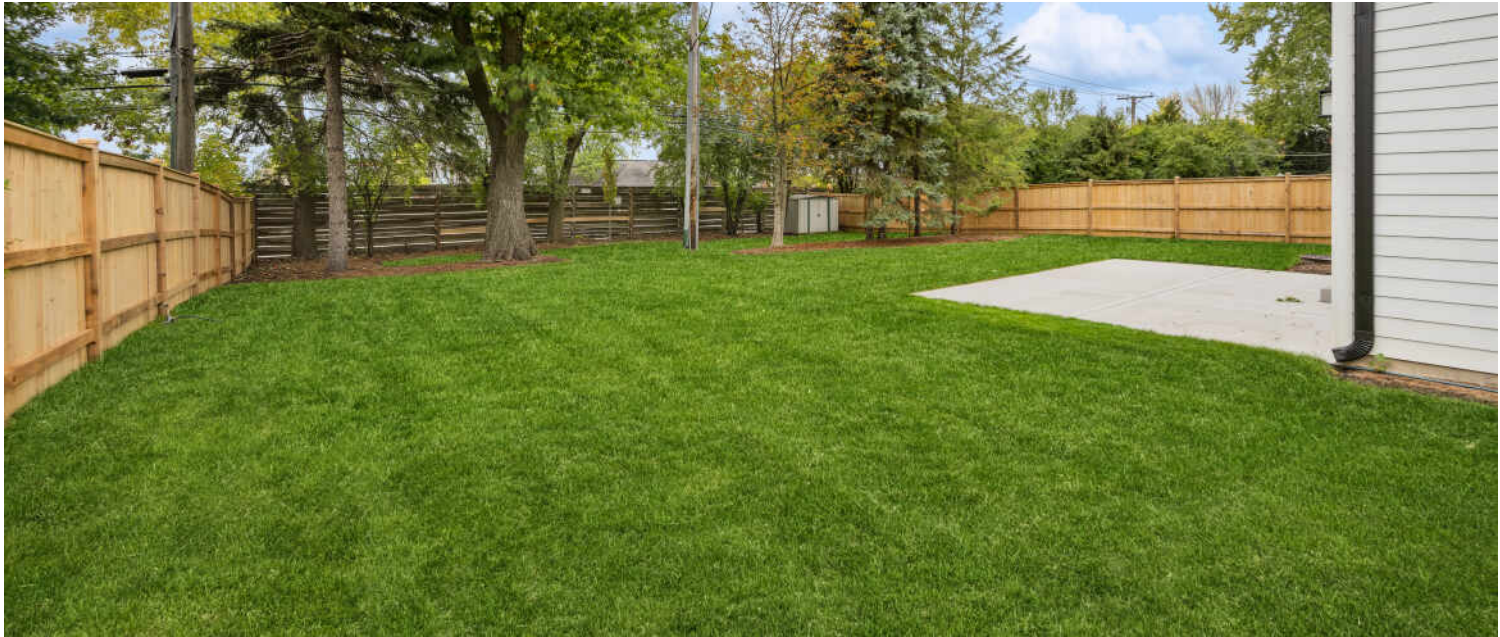


RECREATIONAL AREA



GYM





BACK YARD



BACK YARD





JUST 20 MILES FROM DOWNTOWN CHICAGO, **GLENVIEW** IS A DESTINATION IN ITS OWN RIGHT.

*Locals love the many parks and recreational facilities that are maintained by the Glenview Park District, along with highly-rated schools, easily-accessible public transportation, and shopping centers such as The Glen.*

The scenic North Shore town has expanded rapidly thanks to its established neighborhoods, convenient access to transportation, and array of amenities.

More than 45,000 people call Glenview home, with properties ranging from townhomes and condominiums to luxury custom homes featuring the latest amenities. Newer homes can also be found at The Glen, a large development on the site of the former Glenview Naval Air Station that offers an assortment of shops and restaurants, a movie complex, the Kohl Children’s Museum, and access to one of the town’s two Metra stations.

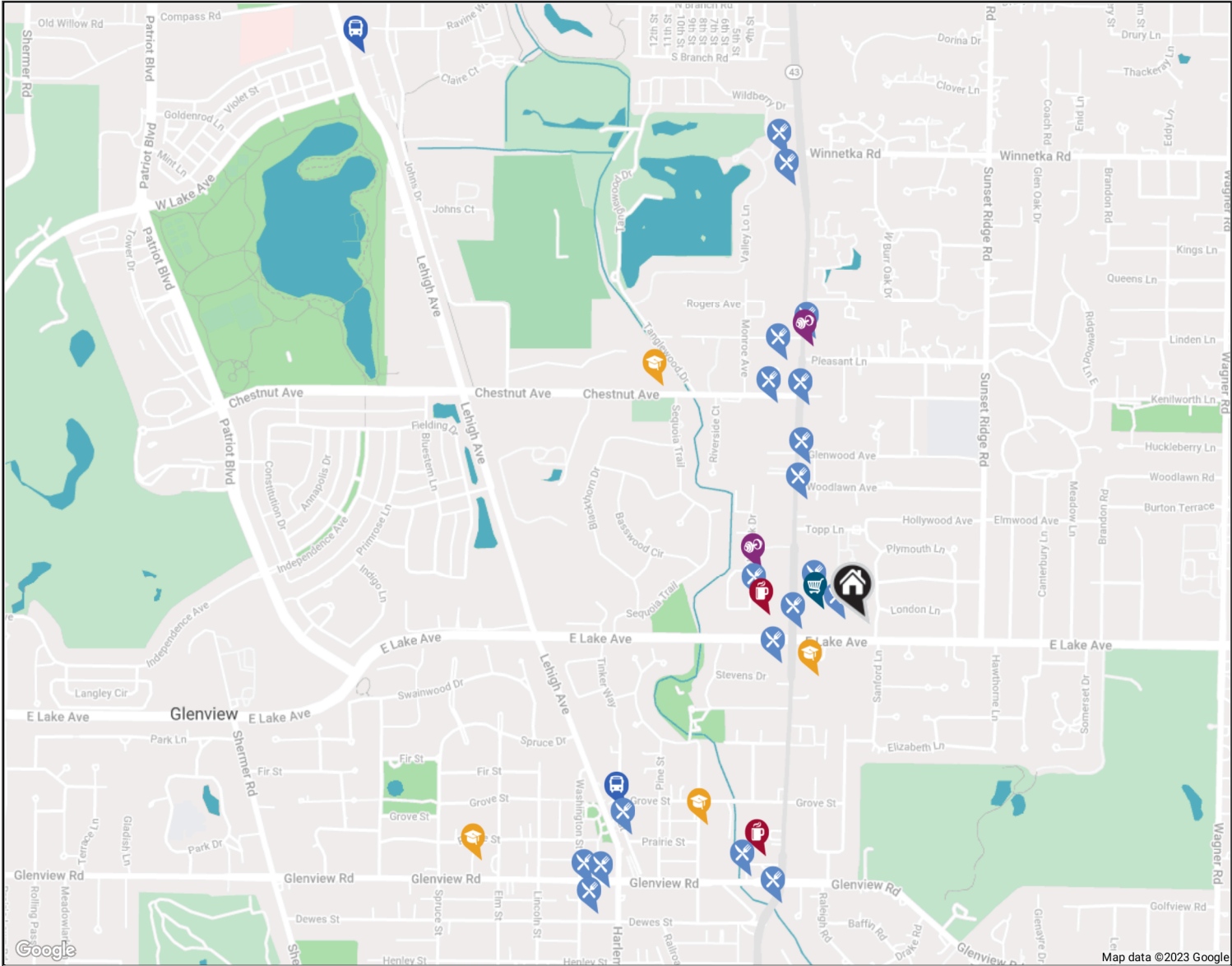
Glenview is served by a number of public and private schools, including Glenbrook South High School, ranked among the top in the nation according to Business Insider.

The Glenview Park District offers indoor and outdoor pools, golf courses, soccer fields, nature trails, an ice center, tennis club, and multi-purpose community center.

In addition to modern development, Glenview celebrates and preserves its early days with two notable attractions: Wagner Farm and The Grove. A 20-acre working farm, Wagner Farm has hands-on programs – horseback riding, tractor driving, and other activities – that reflect a day in the life of a 1920s farmer. The Grove, a National Historic Landmark, includes a prairie, nature trails, historic buildings, and a log cabin that dates back to the 1850s.

NEIGHBORHOOD GUIDE MAP

1408 HUNTINGTON DRIVE  
.....  
24





NEIGHBORHOOD GUIDE



RESTAURANTS

Hackney's on Lake  
1514 EAST LAKE AVENUE, 0.0 MI

Thai Inbox Glenview  
1417 WAUKEGAN ROAD, 0.1 MI

Starbucks  
1401 WAUKEGAN ROAD, 0.1 MI

Lalo's Mexican Restaurant  
1432 WAUKEGAN ROAD, 0.2 MI

Goode & Fresh Pizza Bakery  
1336 WAUKEGAN ROAD, 0.2 MI

Walker Bros. Original Pancake House  
1615 WAUKEGAN ROAD, 0.3 MI

Subway  
1635 NORTH WAUKEGAN ROAD, 0.4 MI

Siunik Armenian Grill  
1707 CHESTNUT AVENUE, 0.5 MI

Taco Bell  
1757 WAUKEGAN ROAD, 0.5 MI

Jimmy John's  
1746 GLENVIEW ROAD, 0.6 MI

Oberweis Ice Cream and Dairy Store  
967 WAUKEGAN ROAD, 0.6 MI

Burger King  
1834 WAUKEGAN ROAD, 0.6 MI

Maru Sushi  
1859 WAUKEGAN ROAD, 0.6 MI

Grandpa's Place  
1868 PRAIRIE STREET, 0.7 MI

Viccino's Pizza Company  
1905 GLENVIEW ROAD, 0.8 MI

Dunkin'  
980 HARLEM AVENUE #23, 0.8 MI

Subway  
948 HARLEM AVENUE, 0.8 MI

Valley Lodge Restaurant  
2132 WAUKEGAN ROAD, 0.9 MI

Chinatown Kitchen  
2200 WAUKEGAN ROAD, 1.0 MI



COFFEE SHOPS

Dunkin'  
1410 WAUKEGAN ROAD SUITE 180, 0.2 MI

Heinen's Grocery Store  
1020 WAUKEGAN ROAD, 0.5 MI



SHOPPING

Trader Joe's  
1407 WAUKEGAN ROAD, 0.1 MI



HEALTH CLUBS

Orangetheory Fitness  
1464 WAUKEGAN ROAD, 0.2 MI

Evolution Yoga  
1841 WAUKEGAN ROAD, 0.6 MI



SCHOOLS

Lyon Elementary School  
1335 WAUKEGAN ROAD, 0.1 MI

Our Lady of Perpetual Help Catholic School  
1123 CHURCH STREET, 0.5 MI

Open Arms  
1850 CHESTNUT AVENUE, 0.6 MI

Glenview Community Church Nursery School  
1000 ELM STREET, 0.9 MI



TRANSIT

Glenview  
METRA - MILWAUKEE DISTRICT NORTH, 0.6 MI

North Glenview  
METRA - MILWAUKEE DISTRICT NORTH, 1.6 MI

1408 HUNTINGTON DRIVE

NO REPRESENTATIONS ARE MADE REGARDING THE ACCURACY OF THE INFORMATION PROVIDED. ALL DATA IS SUBJECT TO CHANGE AND SHOULD BE VERIFIED WITH LOCAL SOURCES.



