

14112 REDMOND DRIVE
HUNTLEY





ROOM DIMENSIONS

LIVING ROOM : 28' × 27'
DINING ROOM : 12' × 13'
KITCHEN : 14' × 15'
BREAKFAST NOOK : 14' × 12'
PRIMARY BEDROOM : 17' × 14'
SECOND BEDROOM : 13' × 12'
THIRD BEDROOM : 11' × 19'
FOURTH BEDROOM : 13' × 31'
REC ROOM : 23' × 14'
STORAGE ROOM : 33' × 23'

4 BEDROOM

3 BATH

TAXES: \$9,878 (2023)

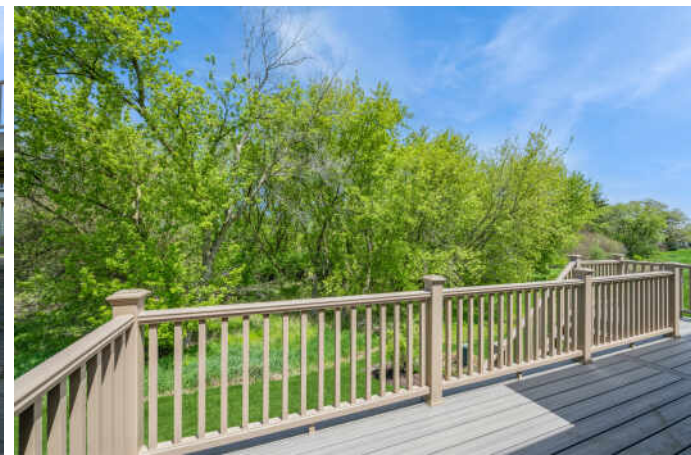
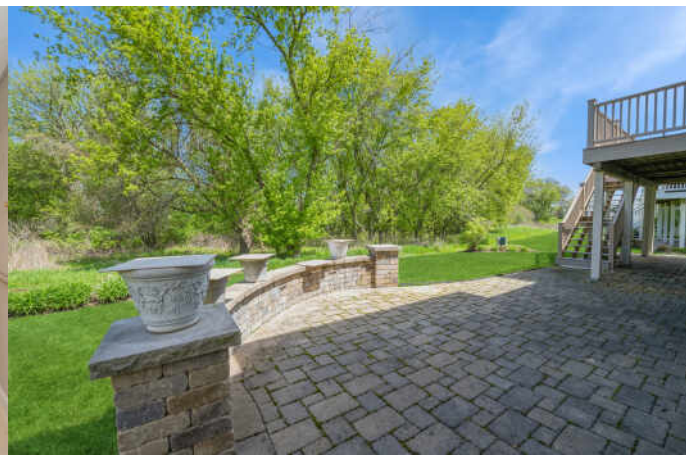
ASSESSMENTS: \$155 PER MONTH

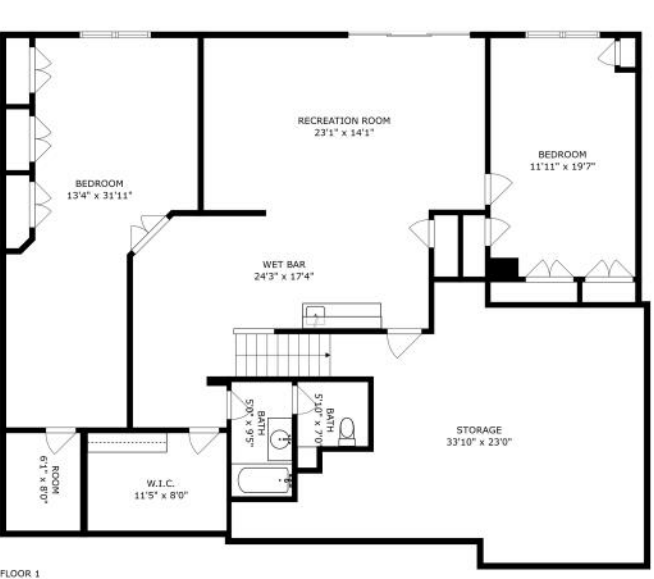
DEL-WEBB SUN CITY GEM

This is one of those homes that just feels good the moment you walk in. Located in the highly desirable Del Webb active-adult community, this home pairs comfort, space and style with the lifestyle perks of a vibrant, amenity-rich neighborhood. Inside, warm hardwood floors, custom finishes, and soft natural light create a welcoming atmosphere. The kitchen is truly impressive-exceptionally spacious with more cabinetry than you'll know what to do with, making it perfect for everything from weeknight meals to holiday gatherings. The main living room features a cozy fireplace surrounded by custom built-in shelving, ideal for showcasing your favorite books, art, or family treasures. Just outside, the newly installed, maintenance-free deck offers peaceful, private views of a wooded natural area-your own private backdrop with no neighbors behind you. The walk-out basement expands living space even further, with a wet bar and room for entertaining, hosting friends & family, hobbies, or simply relaxing. With four bedrooms, three full baths, and a 3-car garage, there's plenty room to live and host comfortably. Solar panels keep your electric bill at or near zero, while tasteful, high-end details throughout reflect pride of ownership. This home has been lovingly maintained and is on the market for the very first time since it was built. All of this, plus access to Del Webb Sun City's renowned amenities-including clubhouse, pool, and fitness center makes this a rare find in Huntley's most desirable active adult community









FLOOR 1



FLOOR 2

SIZES AND DIMENSIONS ARE APPROXIMATE, ACTUAL MAY VARY.



SAY HELLO TO THE VILLAGE OF **HUNTLEY**,
HOME OF FRIENDLY NEIGHBORS AND THE
GREAT OUTDOORS.

Wide-open spaces in Huntley set the scene for activities like hiking, biking, fishing, and camping. The community's parks, aquatic center, and Pinecrest Golf Club offer several recreational opportunities along with the nearby Kane County Forest Preserve and McHenry County Conservation District.

The community comes together for events throughout the year such as a summer concert series at the Town Square, a farmers market, and a fall festival. Deicke Park is another popular spot for gatherings and includes a playground, baseball field, and more.

Homebuyers will love Huntley's range of properties including attached and single-family homes in traditional and colonial styles as well as new construction developments.

Commuters will find easy access to I-90 from Route 47 and Metra stations in nearby Crystal Lake or Elgin.



NOTES _____



JUSTIN IMMEL

(262) 909-3838

JIMMEL@ATPROPERTIES.COM



All specifications, features, designs, price, assessments, taxes and materials are subject to change without notice. Depicted floor plans and architectural renderings are only an artist's impression.

