

1413 TOMLIN DRIVE
BURR RIDGE





ROOM DIMENSIONS

LIVING ROOM : 21' × 13'
FAMILY ROOM : 21' × 12'
DINING ROOM : 13' × 12'
KITCHEN : 11' × 10'
PRIMARY BEDROOM : 16' × 13'
SECOND BEDROOM : 13' × 12'
THIRD BEDROOM : 11' × 11'
FOURTH BEDROOM : 11' × 10'

4 BEDROOM

2.1 BATH

TAXES: 15,363

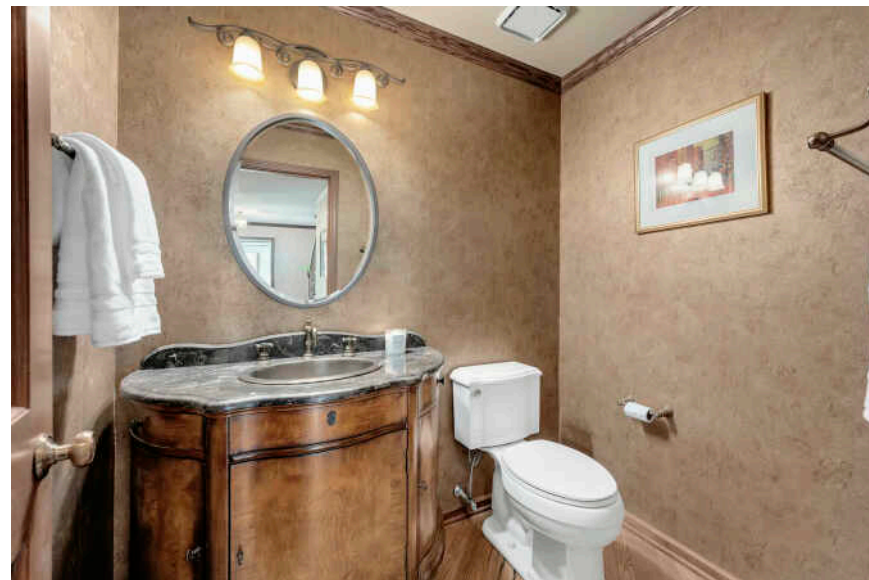
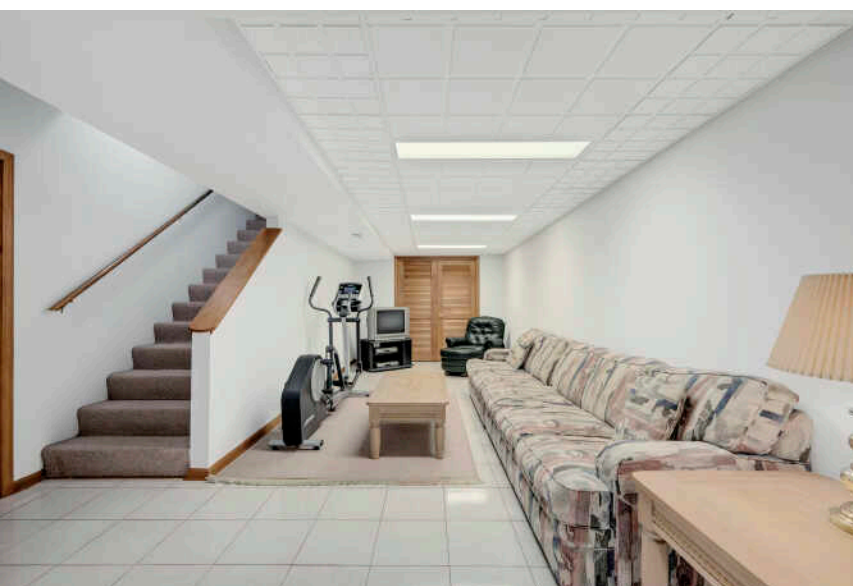
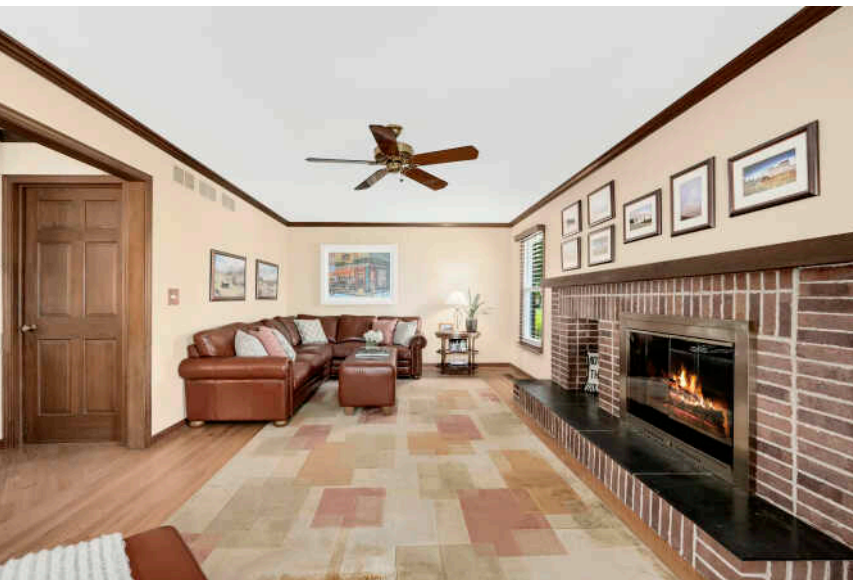
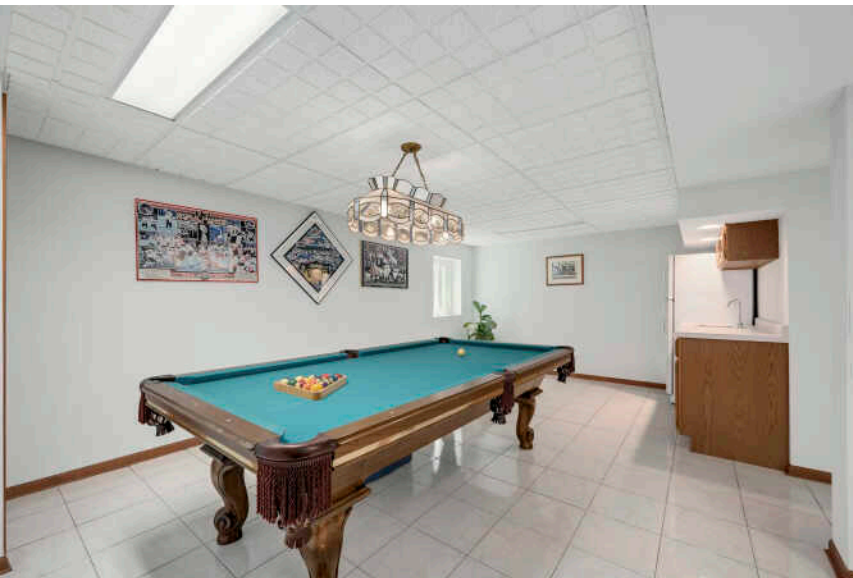
ASSESSMENTS: \$430 / YEAR

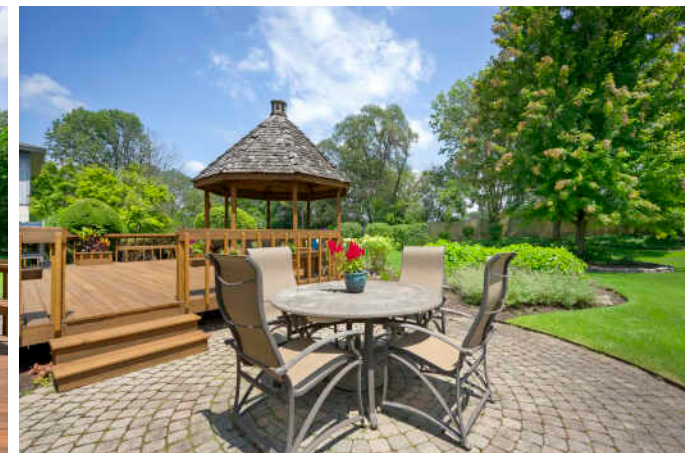
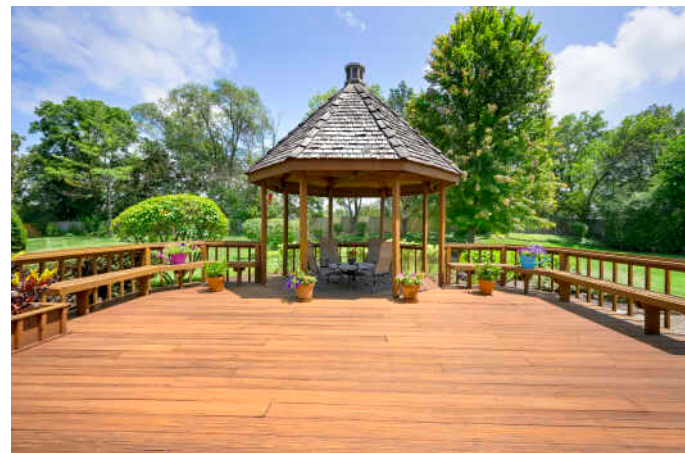
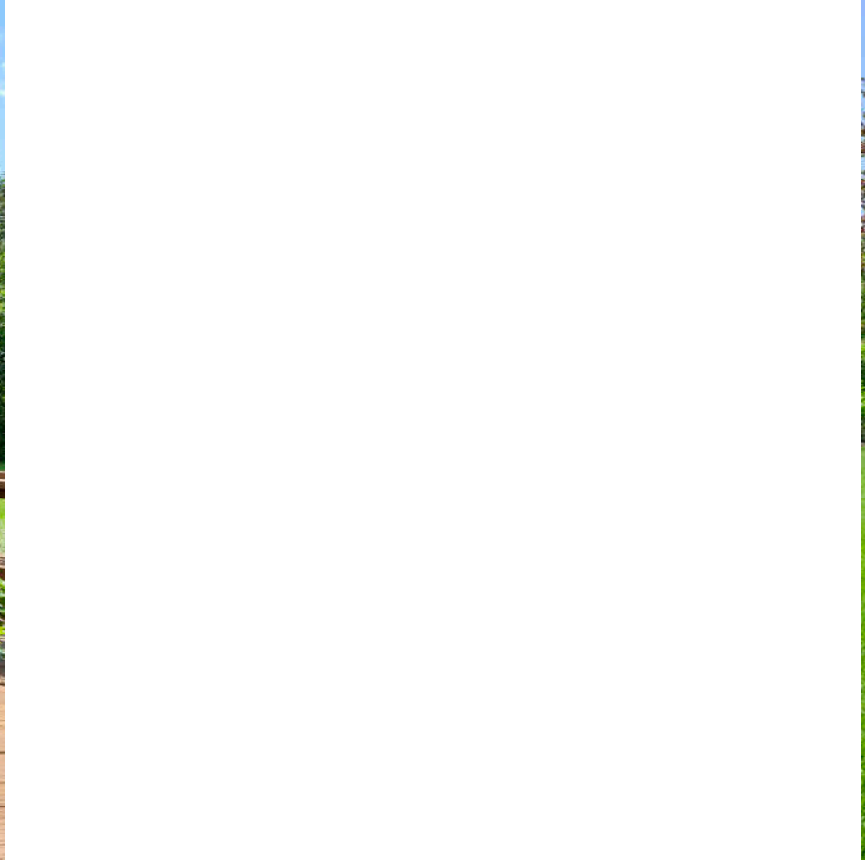
Welcome to Tomlin Drive. This immaculate home is nestled in the Burr Ridge Meadows subdivision of the coveted Hinsdale School District 181. This home has one of the most impressive yards you will see; a true private oasis. Inside, you will notice a functional, welcoming layout with plenty of natural light and generous room sizes. The main level living area boasts HW flooring, crown molding, sub zero fridge, Wolf oven range, a private office, and laundry. The primary suite has an over sized walk-in shower with full body sprays, a soaker tub, and a double vanity-a true retreat. Bedrooms 2 and 3 are equipped with walk-in closets and plenty of space for essentials. Other features of this home include Feldco double-pane sound proof windows; outdoor sprinkler system; invisible pet fence; and attached Weber gas grill. Walking distance to Woods Pool, tennis courts, and Katherine Legge Park. This is a fantastic opportunity to live in a charming neighborhood with well renowned schools. Welcome home.

- 100x207 LOT
- Above Grade SF 2,643
- 2 Car Attached Garage











LAUREN GEHLMANN

708.769.6005

LGEHLMANN@ATPROPERTIES.COM

LAUREN  GEHLMANN
— Realtor® —



CHRISTIE'S
INTERNATIONAL REAL ESTATE

All specifications, features, designs, price, assessments, taxes and materials are subject to change without notice. Depicted floor plans and architectural renderings are only an artist's impression.

