

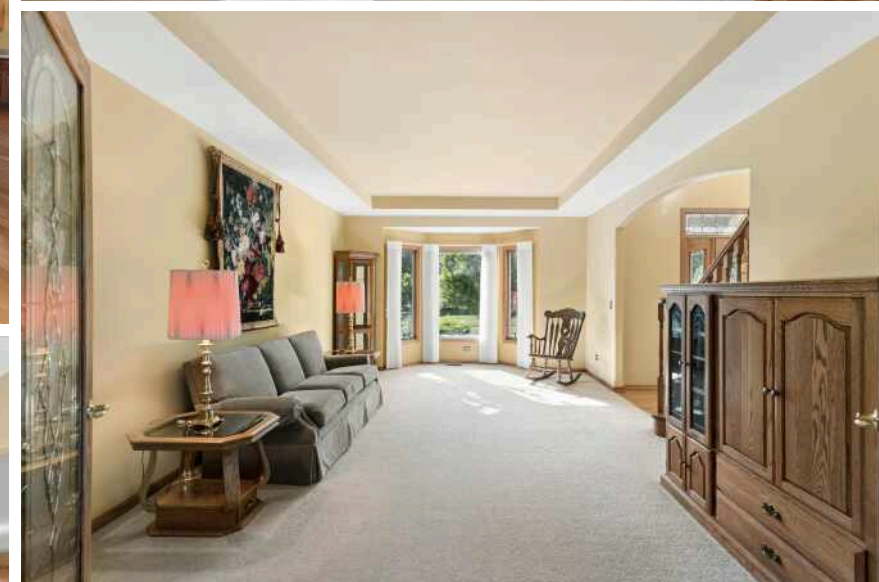
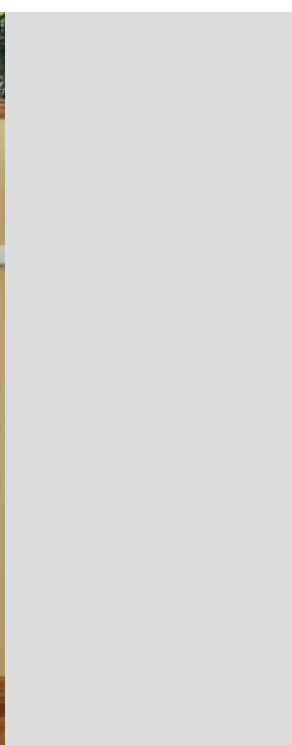
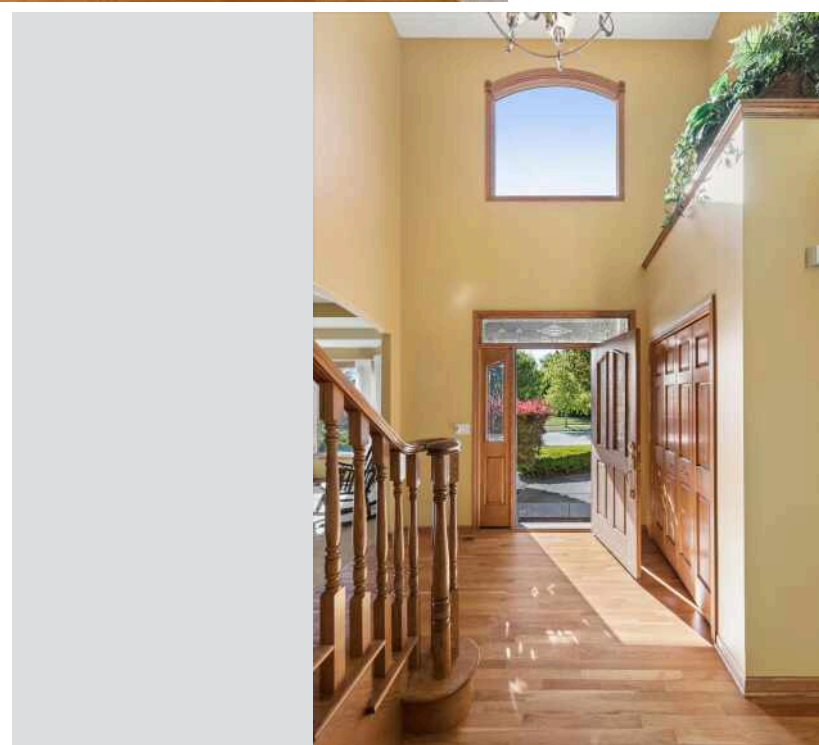
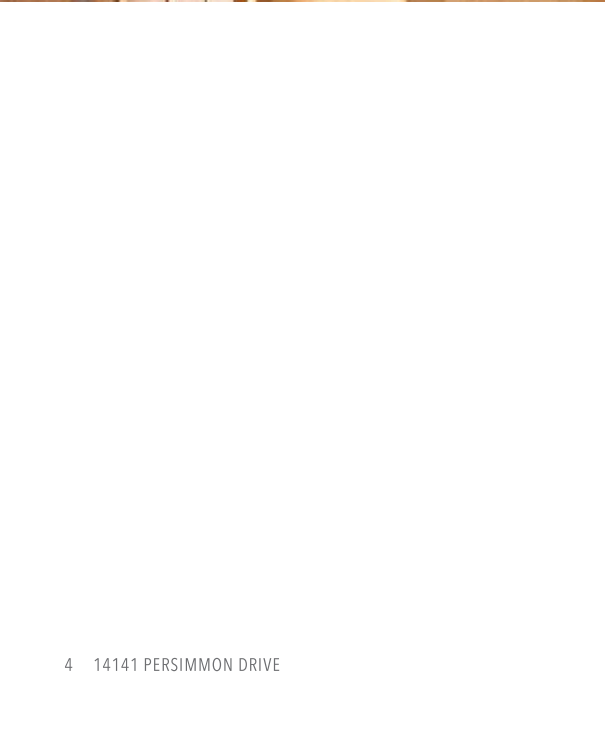
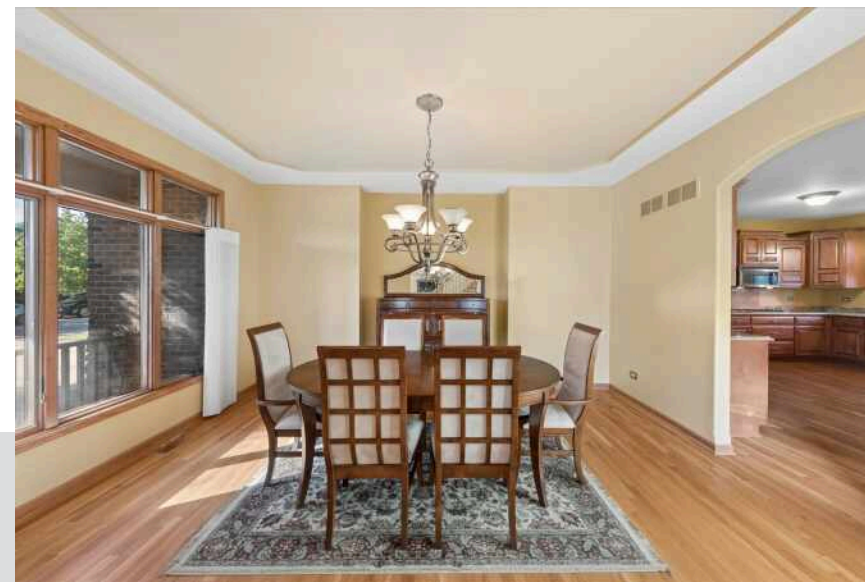
14141 PERSIMMON DRIVE
ORLAND PARK





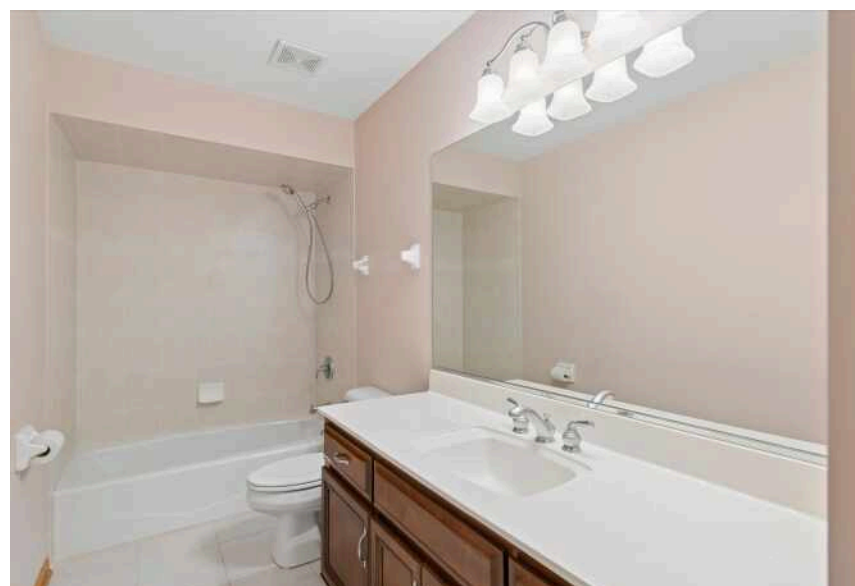
5 BEDROOM
4.1 BATH

Welcome to this exceptional single-family home located in one of Orland Park's most desirable neighborhoods. From the moment you step into the light filled two story foyer, you'll know you've found something special. Designed with comfort and flexibility in mind, this remarkable home features two primary suites, making it ideal for multi-generational living, extended guests, or those seeking a private retreat. The main level offers a spacious eat-in kitchen with custom cabinetry, granite countertops, double ovens, and direct access to the expansive Trex deck perfect for entertaining family and friends. The first floor also includes a welcoming family room, formal living room, dining room, primary suite with en-suite bath, and a convenient powder room. The second level features a luxurious primary suite complete with a spacious walk-in closet and beautifully appointed en-suite bath. Two additional generously sized bedrooms, each with walk-in closets, share a full hall bath, providing comfort and convenience for everyone. The finished basement expands the home's living space with an additional bedroom, a large family/recreation room, a full bath, and an enormous storage area. The basement is also plumbed for radiant heat. Recent updates include a new roof and new mechanical systems. Three car attached garage and professionally landscaped yard situated on a quiet street in a highly sought after community.











WITH AN ABUNDANCE OF PARKS AND A GROWING SHOPPING AND DINING SCENE, **ORLAND PARK** IS ONE OF THE MOST SOUGHT-AFTER PLACES TO LIVE IN CHICAGO'S SOUTH SUBURBS.

The village has a population of nearly 60,000 and appeals to those looking for a vibrant, tight-knit community in close proximity to the city of Chicago. Parks, trails, and golf courses abound, offering plenty of recreational opportunities for outdoorsy types. In the summer, Lake Sedgewick is the premier place to explore, fish, and boat, with pedal boats and kayaks available for rent. The Centennial Park Aquatic Center is another popular spot where residents can cool off in the pool or play a game of volleyball. Athletic fields and seasonal events are also hosted at Centennial Park.

When it comes to live entertainment, there are several nearby attractions including the Hollywood Casino Amphitheatre - one of Chicagoland's largest outdoor music venues - located in Tinley Park. Even closer to home is the Orland Park Theatre Troupe, which has been putting on an array of productions for locals to enjoy since 1993.

Approximately a 27-mile drive from downtown Chicago, Orland Park offers convenient access to I-294, I-355, I-57, and I-80. Commuters are just a train ride away from the city thanks to Metra's SouthWest Service line, which has a stop in Orland Park.



JASON NASH

(708) 927-0555

JASONNASH@ATPROPERTIES.COM

NASHBROKERS.COM

NASH

GROUP

@properties® | CHRISTIE'S
INTERNATIONAL REAL ESTATE