

1423 N ASHLAND AVENUE #301
WICKER PARK

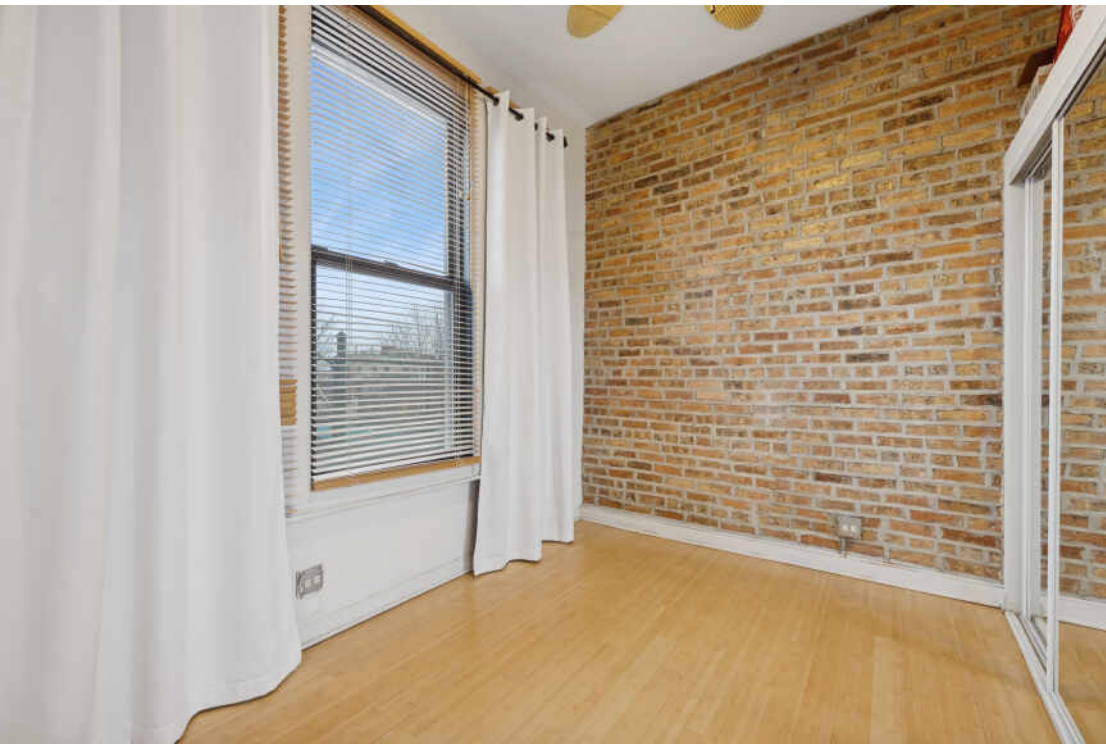


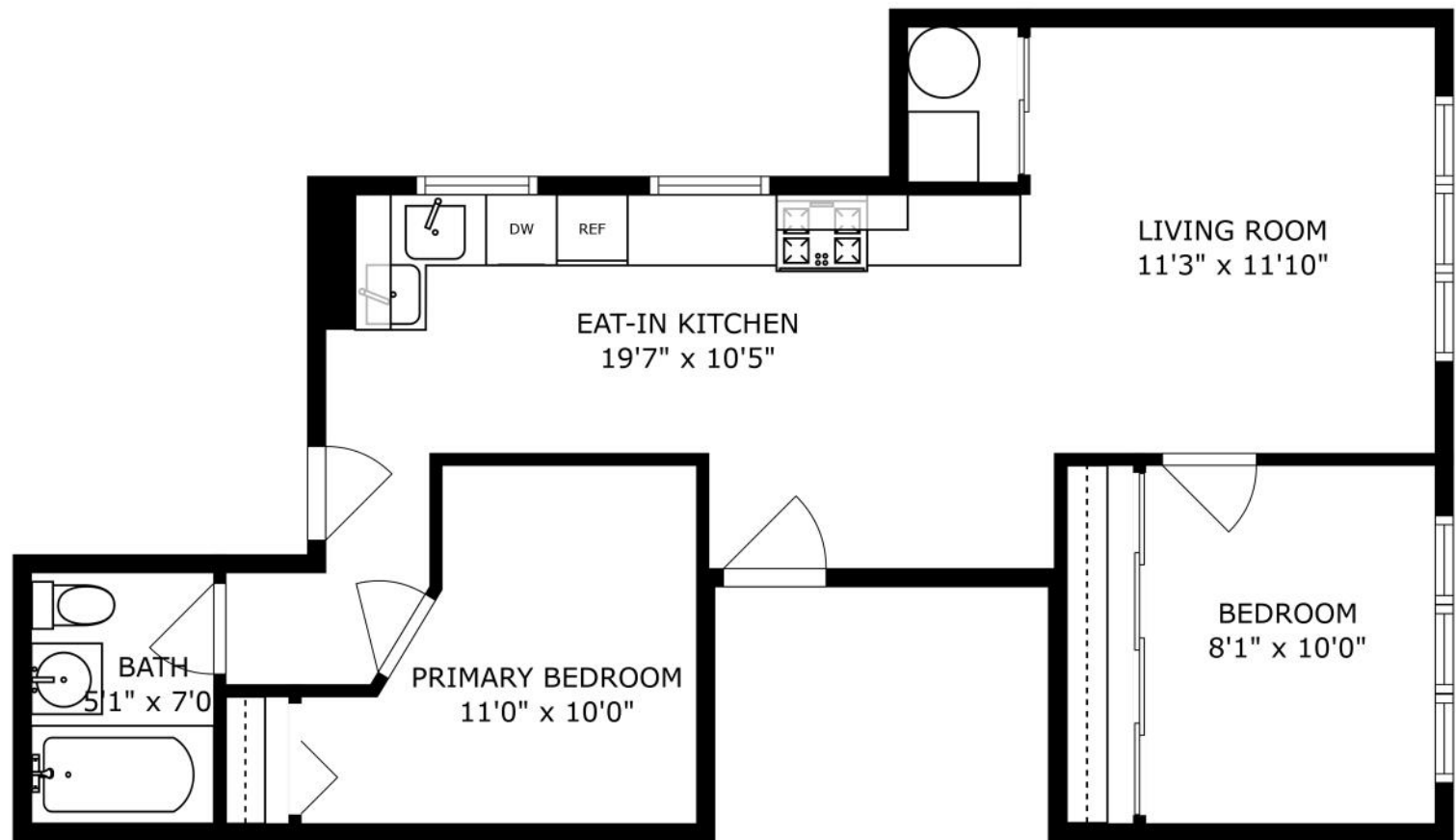


2 BEDROOM
1 BATH
TAXES: 5618.94
ASSESSMENTS: 212.50

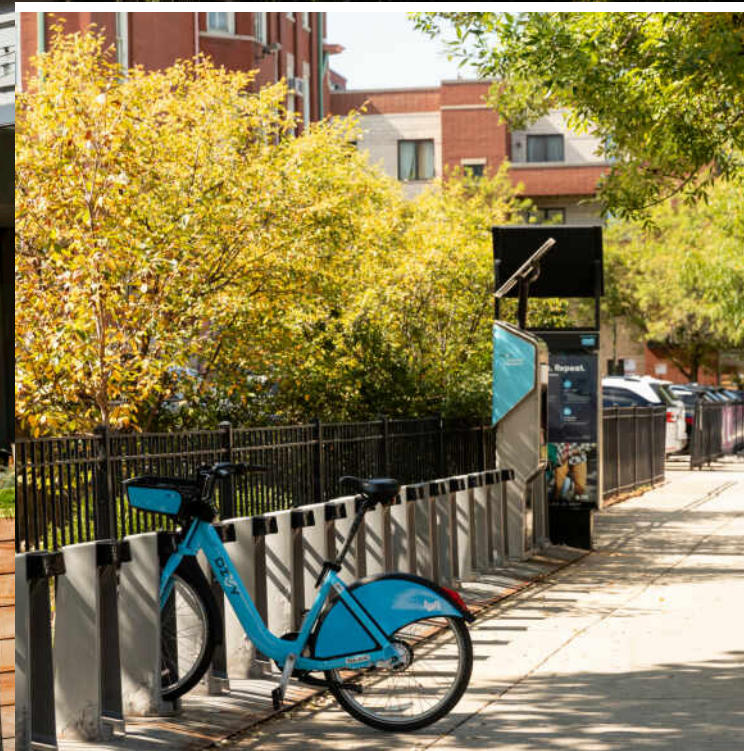
COOL HOME IN FABULOUS LOCATION!

This delightful home has tons of great attributes! 10-foot-tall ceilings, large front windows flooding the living room with sunlight, exposed brick walls, bamboo floors, all of this and it's in a fabulous location. Additional features include a large kitchen with granite countertops, stainless steel appliances, and room for a dining table. The split bedroom floor plan makes for easy living or a fabulous roommate arrangement. PLUS free washers and dryers in the building and a huge storage closet. The icing on the cake is the deeded secure parking spot that's included in the price. The condo is located in hot Wicker Park with a myriad of dining and shopping plus it's only a 2 block walk to the blue line stop, 4 blocks to highway for easy commuting. All of this in a small, well managed boutique building. At this price you have to ask yourself why you would continue to rent.





SIZES AND DIMENSIONS ARE APPROXIMATE, ACTUAL MAY VARY.



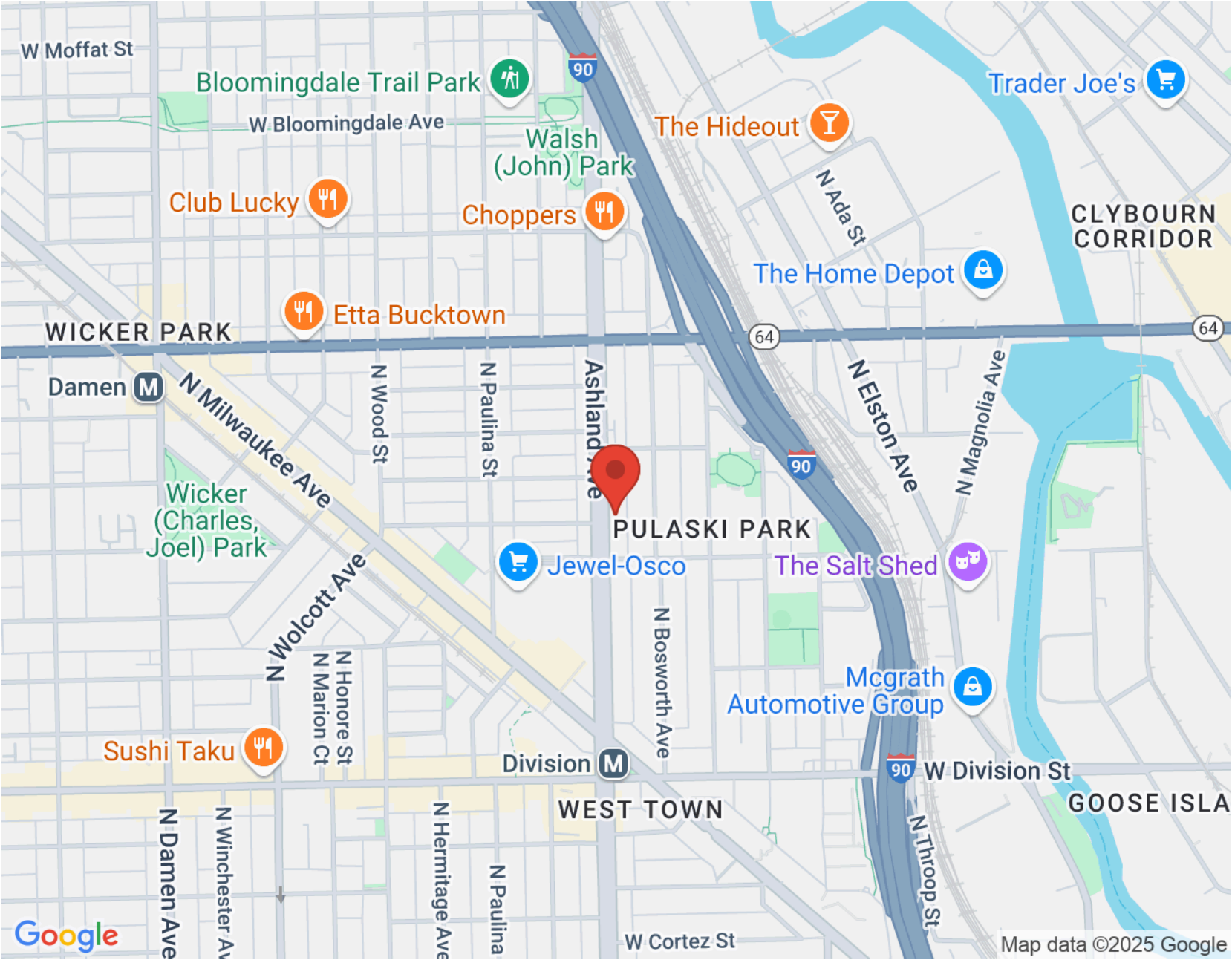
RESIDENTS AND BUSINESSES FLOCKED TO **WICKER PARK** TO REBUILD AFTER THE GREAT CHICAGO FIRE OF 1871. TODAY, CHICAGOANS FLOCK TO THE HIP, HAPPENING NEIGHBORHOOD FOR ITS EATERIES, ARTS AND ENTERTAINMENT.

Wicker Park boasts an eclectic assortment of cafes, independent stores, dive bars, upscale boutiques, art galleries and city parks including four-acre Wicker Park. The neighborhood is home to some of Chicago's most popular and acclaimed restaurants, elevating pizza and tacos to foodie fare and offering a wide variety of options for drinking and dining pleasure.

Located just south of Bucktown and northwest of The Loop, the neighborhood includes large historic 19th century brick and stone mansions and landmark Victorian homes on tree-lined streets. Modern new construction condominiums and single-family homes along with vintage walk-ups, three-flats and lofts round out the diversity of housing available.

Like neighboring Bucktown, Wicker Park's notable commercial architecture remains - re-imagined, redeveloped and restored. The iconic Flat Iron Arts Building, home to artists who moved to the neighborhood in the 1980s, still houses various art studios and local businesses today.

The CTA Blue Line offers convenient access to The Loop and O'Hare International Airport, while the Kennedy Expressway allows for an easy drive to surrounding neighborhoods and suburbs.



NOTES _____



CONNIE GRUNWALDT

(773) 895-4246

773-432-0200

CONNIEG@ATPROPERTIES.COM

CONNIE
GRUNW[▲]ALDT



All specifications, features, designs, price, assessments, taxes and materials are subject to change without notice. Depicted floor plans and architectural renderings are only an artist's impression.

