



14319 W RITEWAY ROAD METTAWA

14319 W RITEWAY ROAD • METTAWA
14319WRITEWAYROAD.INFO



JENNIFER JOYCE BROKER

312.498.0495 mobile
847.295.0700 office
jenniferjoyce@atproperties.com

@properties | CHRISTIE'S
INTERNATIONAL REAL ESTATE

LP LUXURY
PORTFOLIO
INTERNATIONAL

Jennifer Joyce
Welcome Home

14319 W RITEWAY ROAD • METTAWA
14319WRITEWAYROAD.INFO





FRONT VIEW

14319 W RITEWAY ROAD

ROOM DIMENSIONS

Living Room	13'x14'
Family Room	17'x18'
Dining Room	14'x17'
Kitchen	14'x15'
Primary Bedroom	18'x17'
Second Bedroom	15'x16'
Third Bedroom	13'x14'
Fourth Bedroom	13'x15'

FEATURES

Spectacular all brick ranch home on five acres of beautiful land nestled between Lake Forest and Libertyville in the charming equestrian village of Mettawa. The picturesque property is entirely fenced with a gated entrance. Open floorplan gourmet kitchen features a large island and sunny eating area space with beautiful views of the backyard. The kitchen opens up to the family room with woodburning fireplace and tray ceiling. The butler's pantry leads you into the elegant dining room with picture frame wainscoting and detailed crown molding. Escape to the private bedroom wing featuring four walk-in closets with new custom closet organizers and a completely updated luxurious spa bathroom with radiant-heated floors, walk-in glass steam shower, separate vanities, and much more (*don't forget to look up at the ceiling in this showstopper bathroom*). Three additional en-suite bedrooms are located on the opposite side of the house each with their own walk-in closet. Four fireplaces, hardwood floors on the main floor, large mudroom, and first floor laundry room. Spacious lower level includes a high-end home theater with 11 power reclining seats, combined entertainment/exercise room, full bathroom, and space for endless possibilities such as a wine cellar and hobby room. Enjoy outdoor entertaining on the new backyard stone patio with outdoor fireplace, accent lights, outside kitchen (built-in BBQ-grill and pizza oven) and gas firepit. Attached oversized 3.5-car heated garage with storage closets for all your bikes and toys. Award winning Libertyville High School and Roundout School. A hard-to-find spacious ranch home on a beautiful serene setting with low property taxes - Not to be missed!



JENNIFER JOYCE BROKER

312.498.0495 mobile
847.295.0700 office

jenniferjoyce@atproperties.com





FOYER



DINING ROOM



FAMILY ROOM



FAMILY ROOM



KITCHEN / BREAKFAST ROOM



KITCHEN



PRIMARY BEDROOM



PRIMARY BATHROOM



PRIMARY BEDROOM CLOSET



PRIMARY BEDROOM CLOSET



BEDROOM



2ND BEDROOM



3RD BEDROOM



HALF BATH



MUDROOM



THEATER



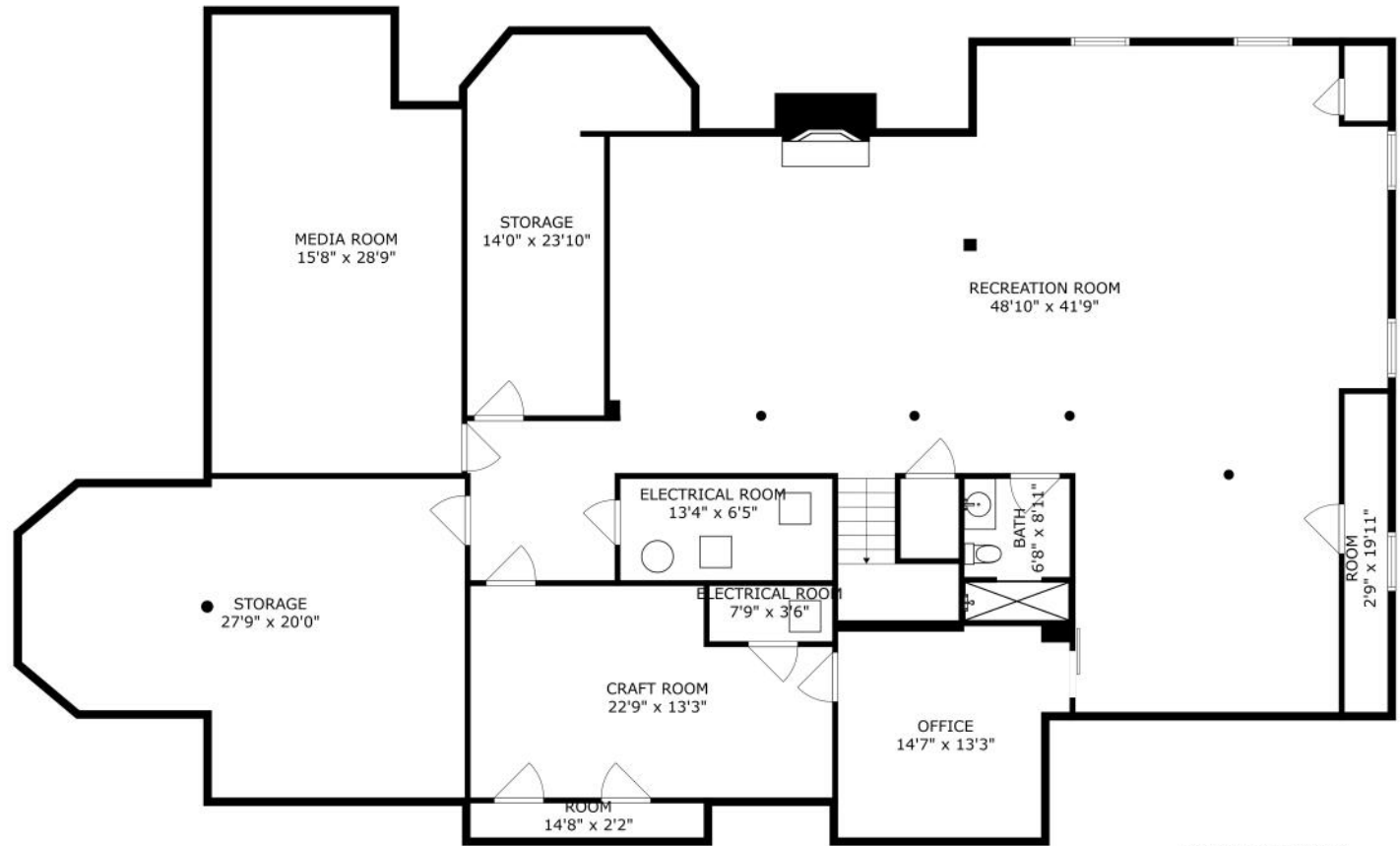
RECREATIONAL ROOM



PATIO



SIZES AND DIMENSIONS ARE APPROXIMATE, ACTUAL MAY VARY.



LOWER LEVEL

14319 W RITEWAY RD
METTAWA, IL 60048

SIZES AND DIMENSIONS ARE APPROXIMATE, ACTUAL MAY VARY.

@properties® | CHRISTIE'S
INTERNATIONAL REAL ESTATE

Leading REAL ESTATE
COMPANIES
OF THE WORLD®

LP
LUXURY
PORTFOLIO
INTERNATIONAL®

