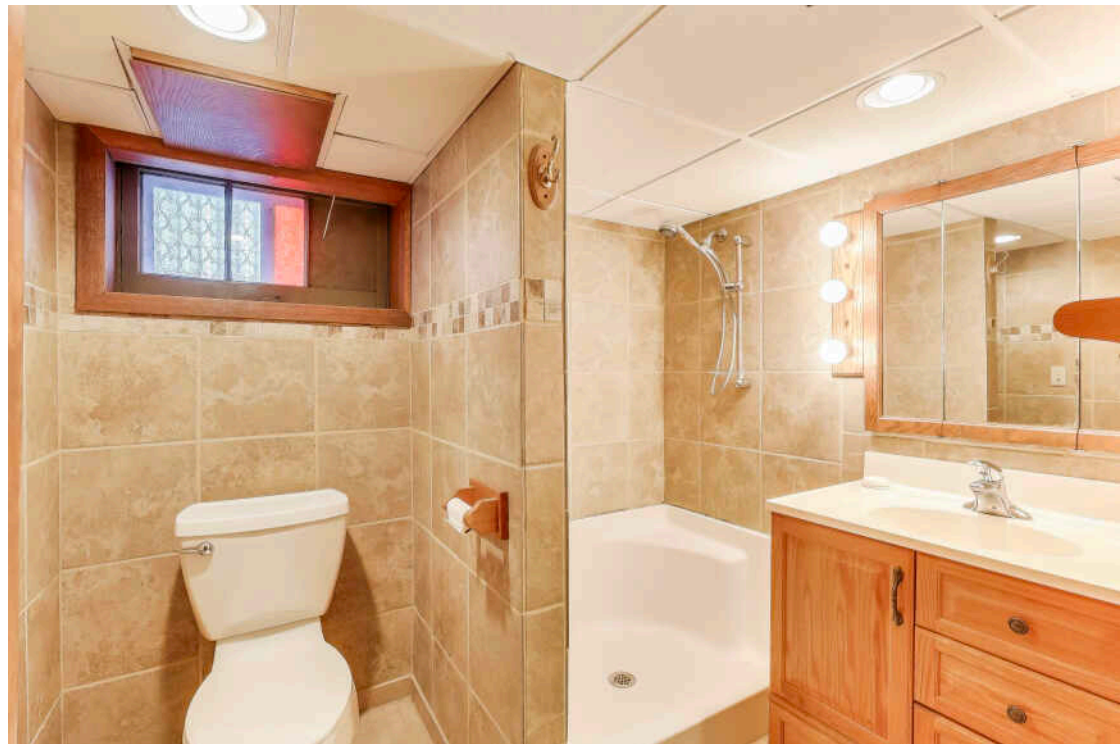


1431 BLAINE AVE
RACINE

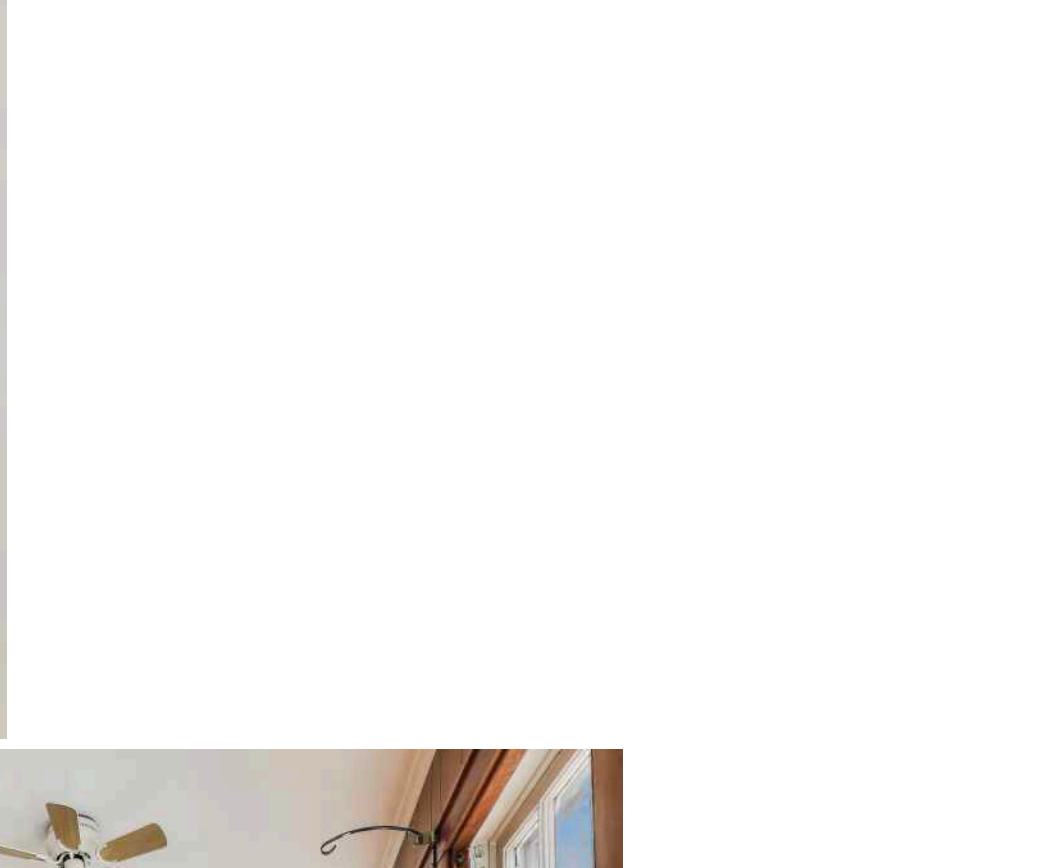


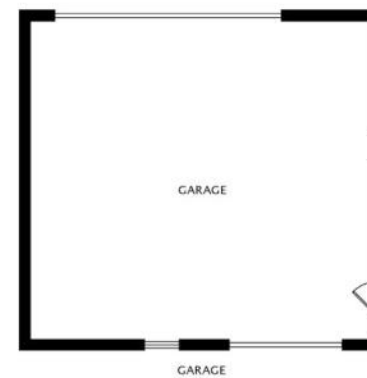
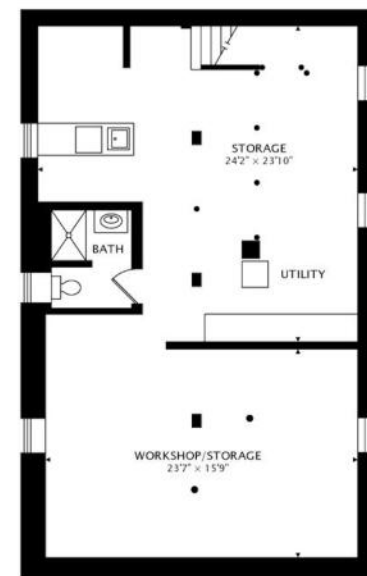
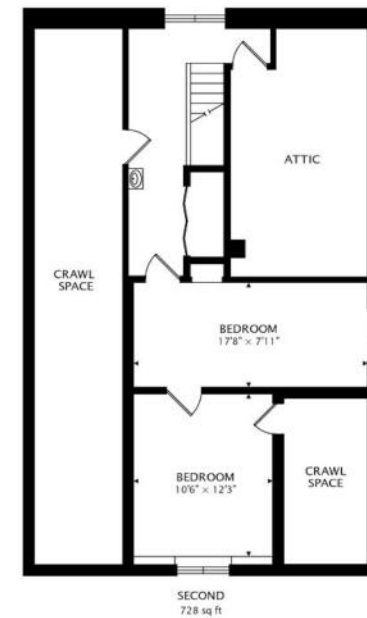
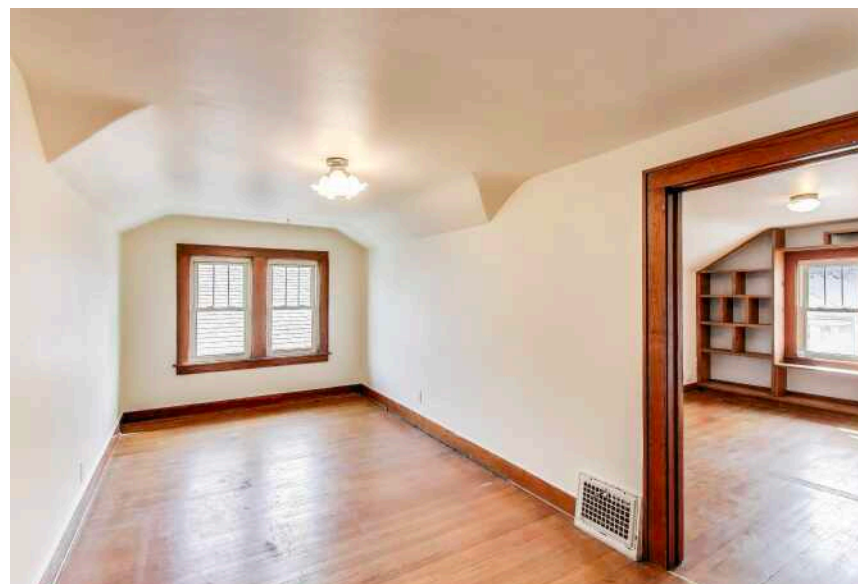


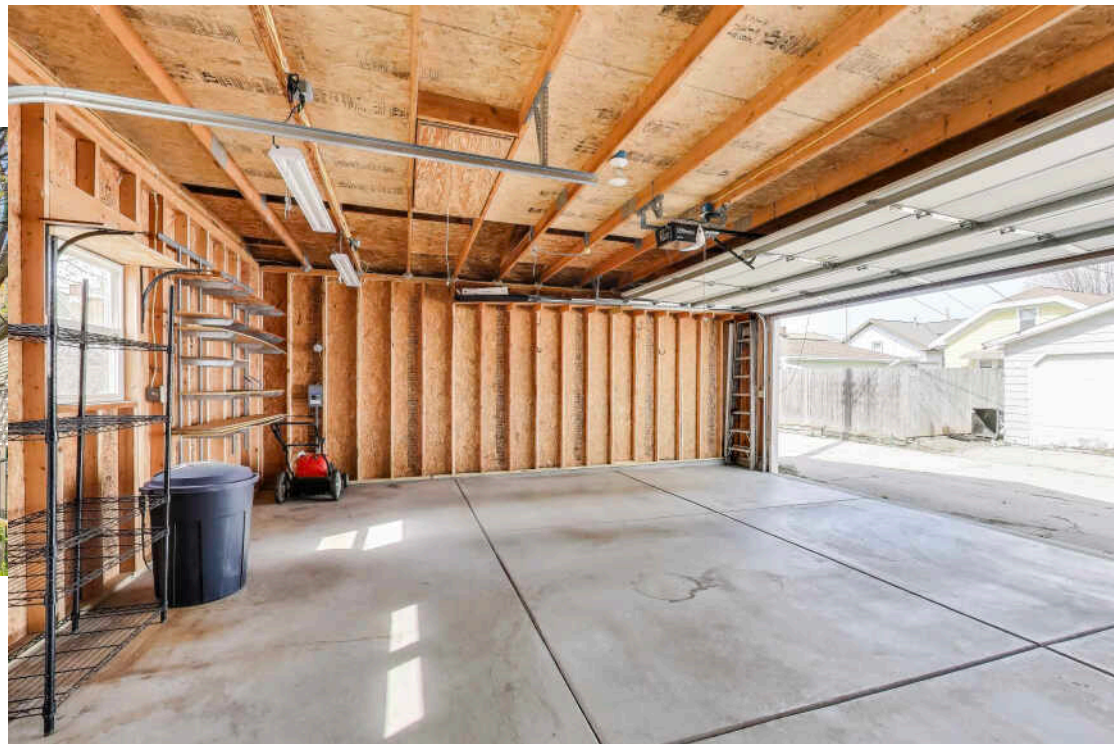
CHARMING BUNGALOW IN RACINE!

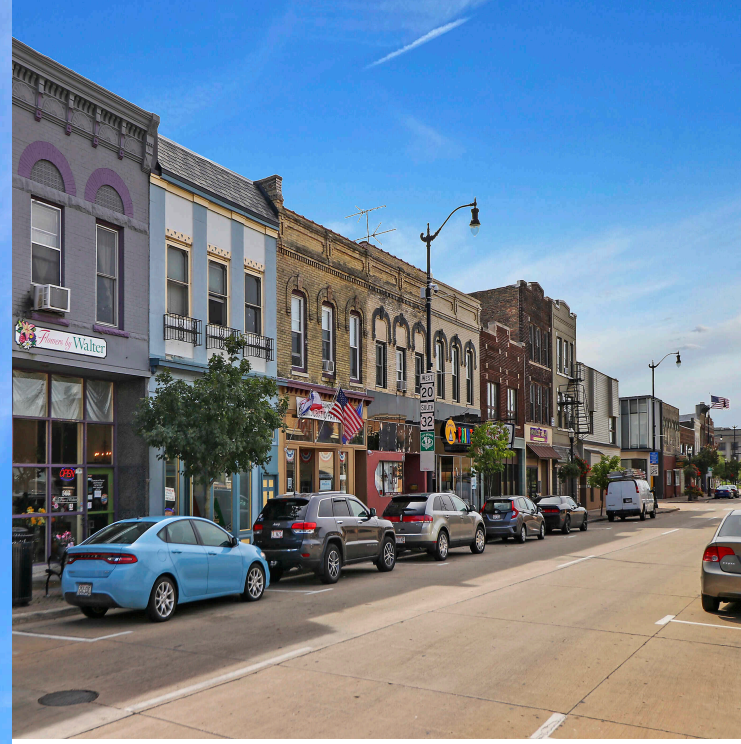
Discover this Racine bungalow, blending classic charm with some modern upgrades. This inviting home features hardwood floors and a formal dining room perfect for gatherings. The kitchen boasts a newer refrigerator & gas stove, ideal for home chefs. The first floor bathroom was updated approximately 2 years ago, including a nice walk-in shower. Step outside to enjoy a fenced-in yard, perfect for pets & outdoor activities, complemented by a 2008-built 2.5-car garage offering ample storage & parking, including extra storage above. Recent upgrades include new vinyl siding (2024), newer roof (approximately 2020), and tankless hot water heater (approximately 2022) for energy efficiency & peace of mind. With its nice location and attractive features, this bungalow is ready for you to call home!

4 BEDROOM
2 BATH
TAXES: \$4,167









SITUATED ON THE SHORES OF LAKE MICHIGAN AND AT THE MOUTH OF THE PICTURESQUE ROOT RIVER, THE **CITY OF RACINE** IS MORE THAN JUST AN ANGLER'S HAVEN.

With over 1,100 acres of parkland, the city is home to several attractions including a vibrant arts community, zoo, and variety of historic buildings, many of which were designed by famed architect Frank Lloyd Wright. Conveniently located between Milwaukee and Chicago, Racine also offers access to ample outdoor areas such as sandy beaches, beautiful parks, a harbor, and the Root River Pathway.

In the summertime, North Beach offers the perfect place to relax, swim, and play. When the temperature drops, residents can be found snowmobiling and cross-country skiing.

For culture buffs, Racine has no shortage of places to explore. The Racine Art Museum houses the largest contemporary craft collection in North America showcasing the works of nationally and internationally recognized artists, while the Racine Theater Guild hosts a wealth of theater festivals, world-class productions, unique concert series, events for children, and community classes throughout the year.

Downtown Racine offers unique shopping and is the site of many community events such as an annual Big Chill snow sculpting competition and Party on the Pavement, which celebrates the end of summer. It is also a prime spot to try the region's best Kringle, a treat that holds the title of Wisconsin's Official State Pastry.



DANIEL KROLL

262-308-4508 (CELL - TEXT ME!)

DANIELK@ATPROPERTIES.COM



All specifications, features, designs, price, assessments, taxes and materials are subject to change without notice. Depicted floor plans and architectural renderings are only an artist's impression.

