

**14332 TOWNE TRAIL DRIVE**  
GREEN OAKS





#### ROOM DIMENSIONS

LIVING : 22' x 13'  
 DINING : 13' x 13'  
 KITCHEN : 13' x 11'  
 FAMILY : 23' x 13'  
 EATING AREA : 12' x 11'  
 FAMILY : 23' x 13'  
 SUNROOM : 16' x 13'  
 PRIMARY SUITE : 19' x 14'  
 BEDROOM : 13' x 11'  
 BEDROOM : 13' x 10'  
 BEDROOM : 13' x 11'  
 BASEMENT : 32' x 26'

## SPECTACULAR BEAUTY IN EQUESTRIAN OAKS CUSTOM BUILT ARTS AND CRAFTS RESIDENCE

- Perfectly situated on a lush acre of meadow, flowering trees, and gardens
- allowing ultimate privacy. Equestrian Oaks is a quaint Community
- Ideal location close to major commuting, Blue Ribbon Oak Grove school and
- Libertyville HS. Experience vibrant downtown Libertyville with an abundance
- of restaurants, shopping, a commuter train and incredible Community
- offerings.
- Open the door and be impressed with this great floor plan with formal
- Living, Dining Rooms, updated Kitchen and lovely Eating area
- Glorious 4 Seasons rm will capture your heart
- Family room opens to entertaining size deck and acre grounds
- Primary Retreat is a welcome surprise with tall, vaulted ceiling and updated bathroom. Huge walk-in closet is sure to please
- Three additional Bedrooms with bright windows and ample closet space are serviced by an updated hall bath
- Spectacular finished basement with new flooring and recessed lighting
- This sought after location and setting is ready for you to make memories call this "HOME"

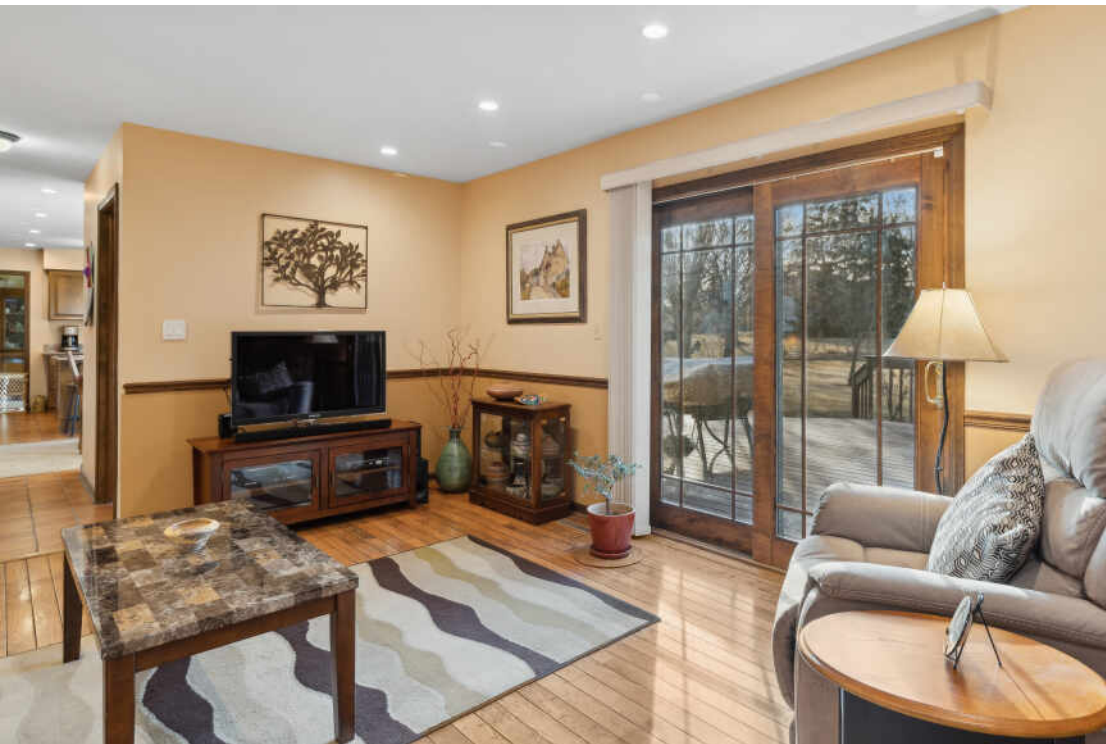
4 BEDROOM  
 2.1 BATH



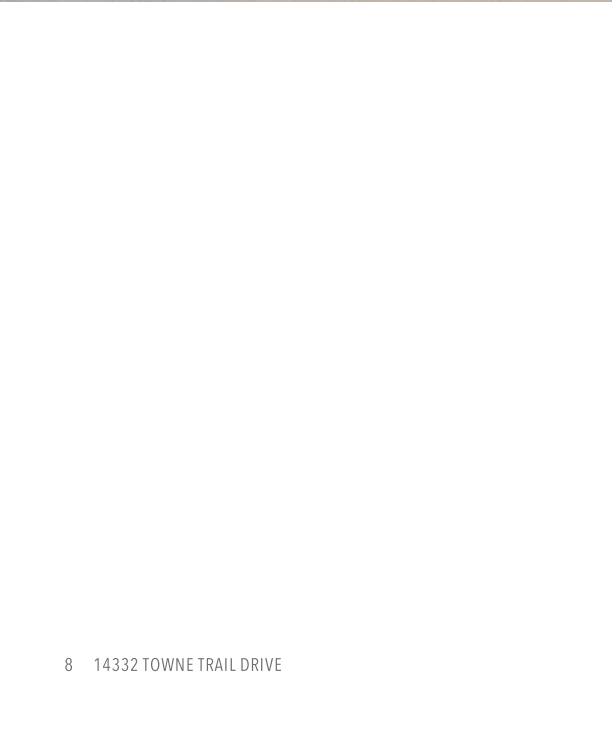
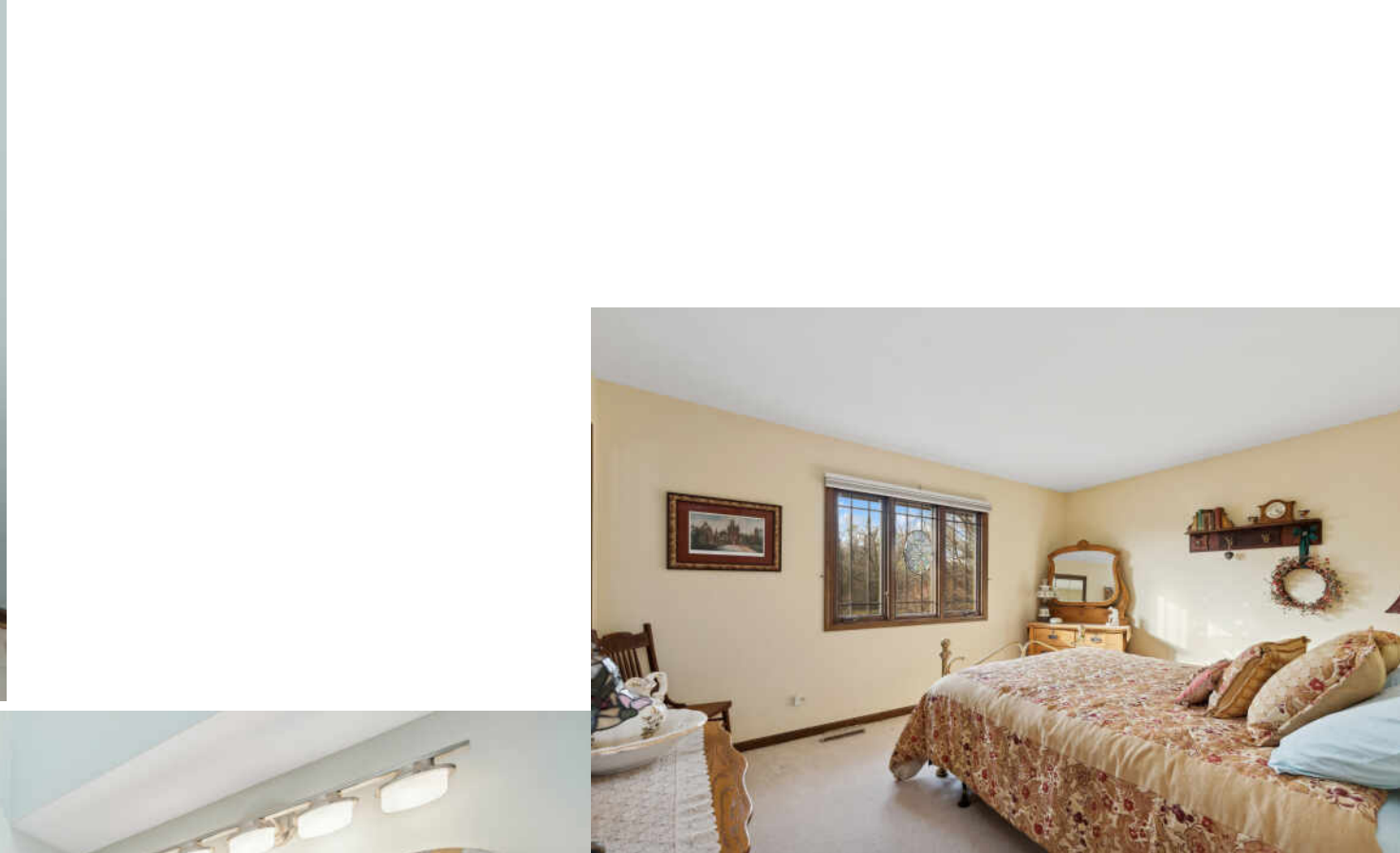




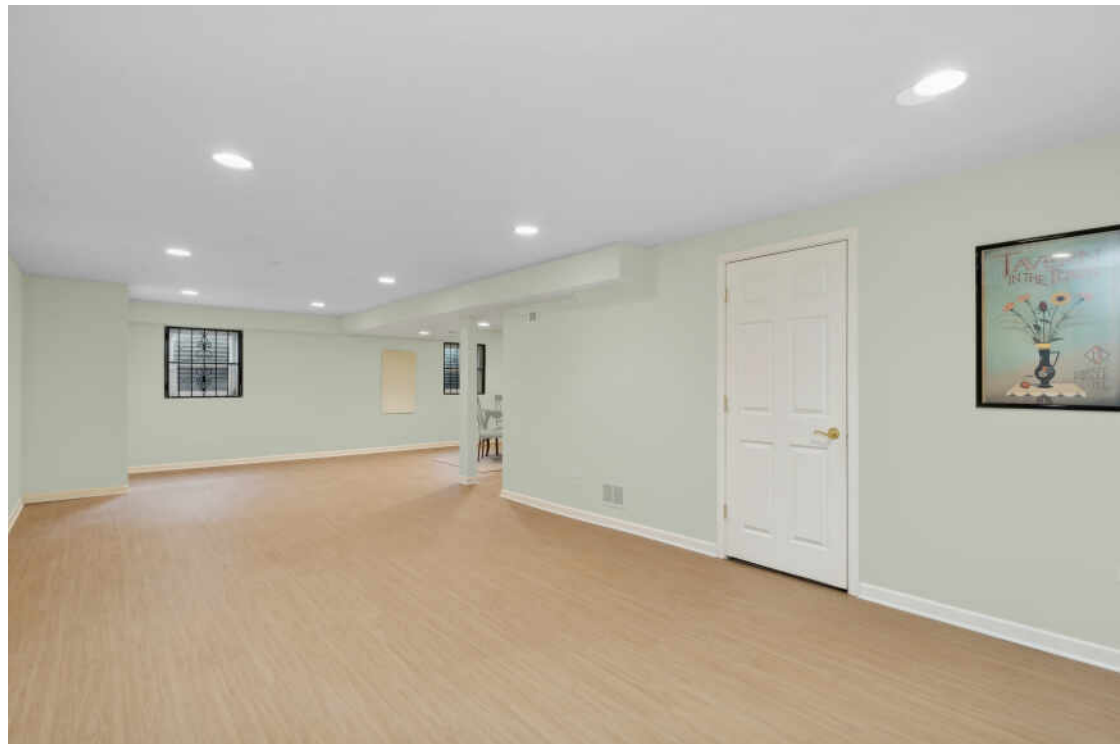




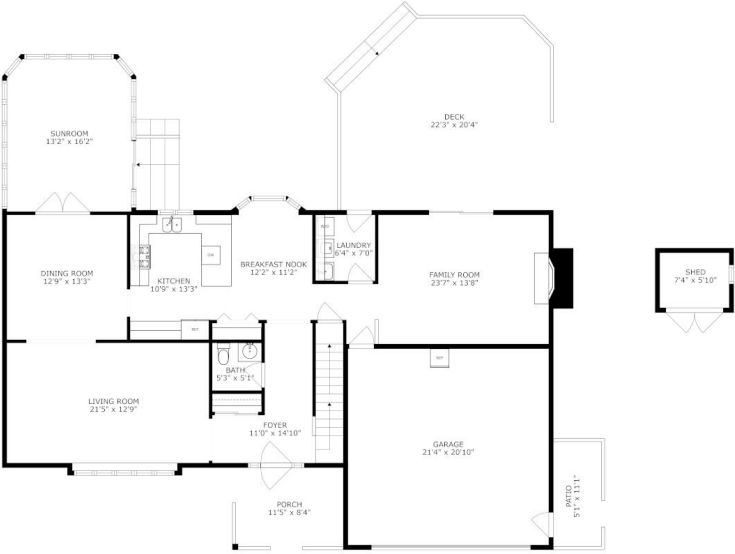




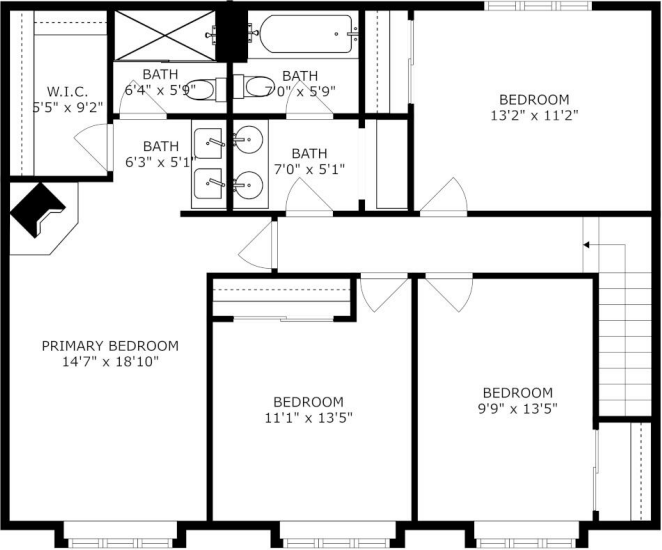








SIZES AND DIMENSIONS ARE APPROXIMATE, ACTUAL MAY VARY.



SIZES AND DIMENSIONS ARE APPROXIMATE, ACTUAL MAY VARY.





NOTES \_\_\_\_\_

\_\_\_\_\_

\_\_\_\_\_

\_\_\_\_\_

\_\_\_\_\_

\_\_\_\_\_

\_\_\_\_\_

\_\_\_\_\_

\_\_\_\_\_

\_\_\_\_\_

\_\_\_\_\_

\_\_\_\_\_

\_\_\_\_\_

\_\_\_\_\_

\_\_\_\_\_





## DUNN/MILLER TEAM

DEBBIE DUNN 847-987-8074

DIANE MILLER 847-650-1437

DDUNN@ATPROPERTIES.COM

DMILLER@ATPROPERTIES.COM



CHRISTIE'S  
INTERNATIONAL REAL ESTATE