

1439 S MICHIGAN AVENUE #104  
SOUTH LOOP





#### ROOM DIMENSIONS

LIVING ROOM : 20' × 18'

DINING ROOM : 11' × 13'

KITCHEN : 11' × 9'

PRIMARY BEDROOM : 11' × 13'

SECOND BEDROOM : 11' × 13'

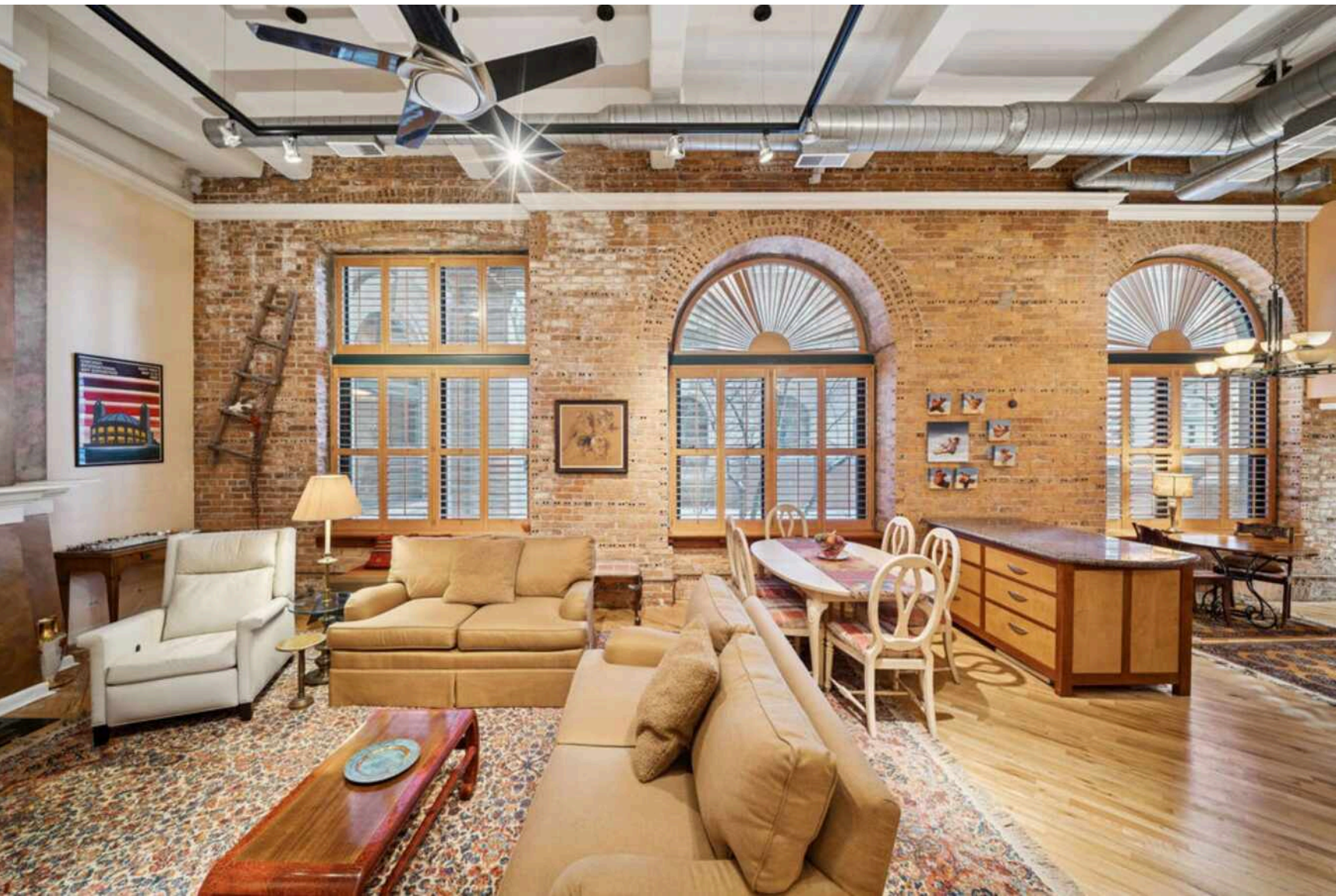
**2 BEDROOM**

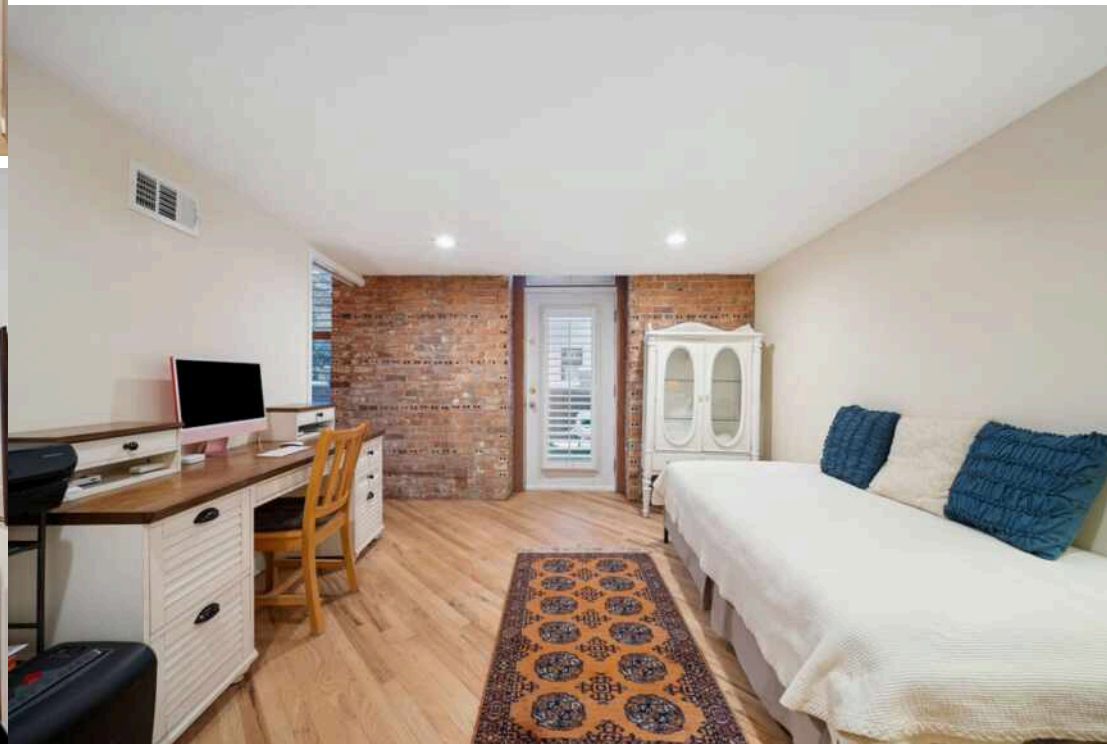
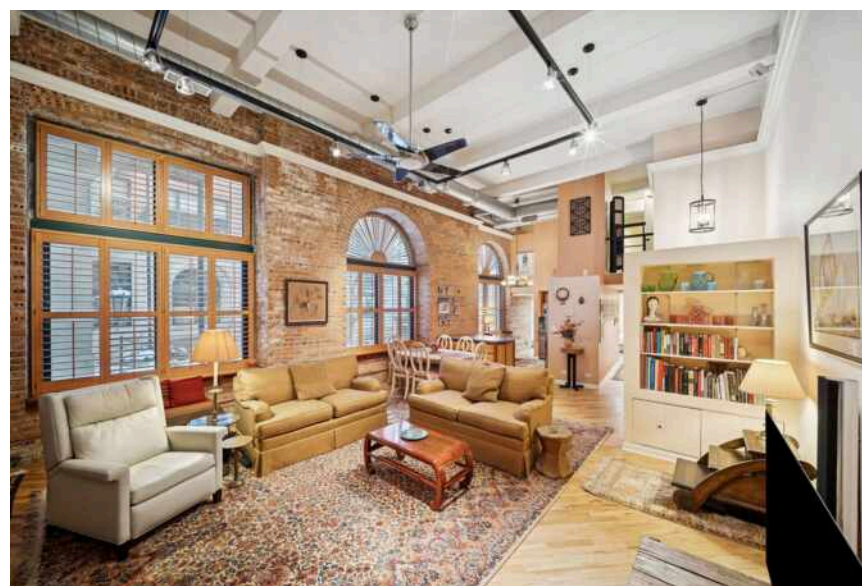
**2 BATH**

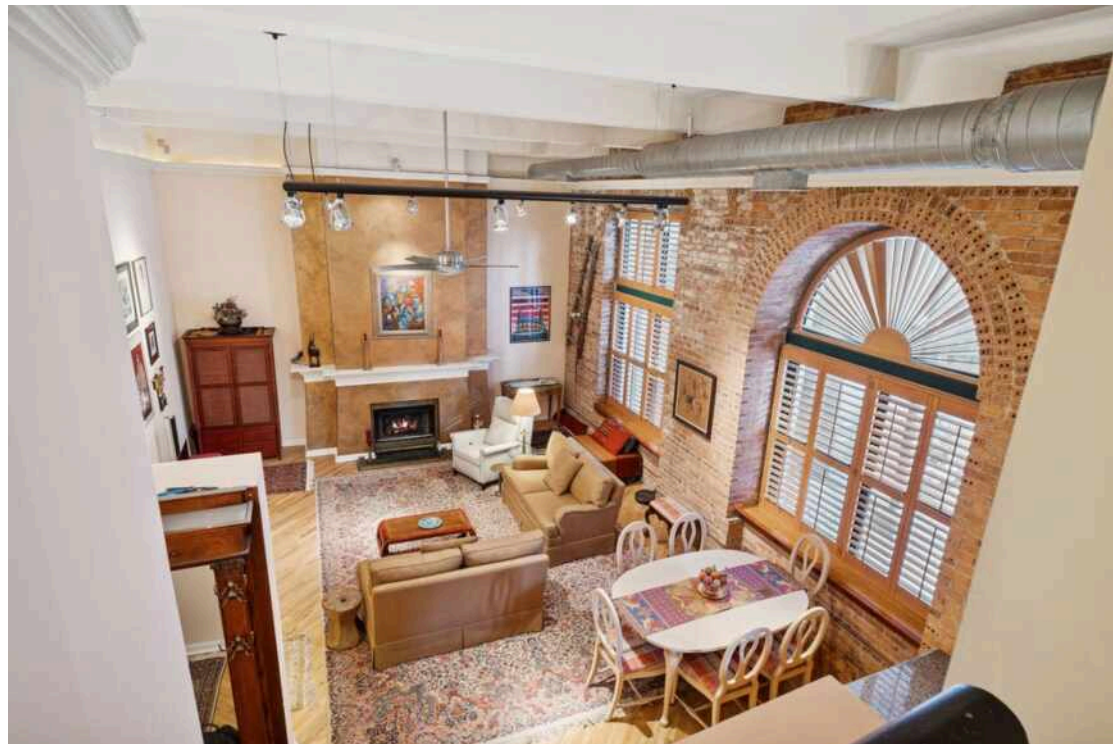
**TAXES: \$7,183**

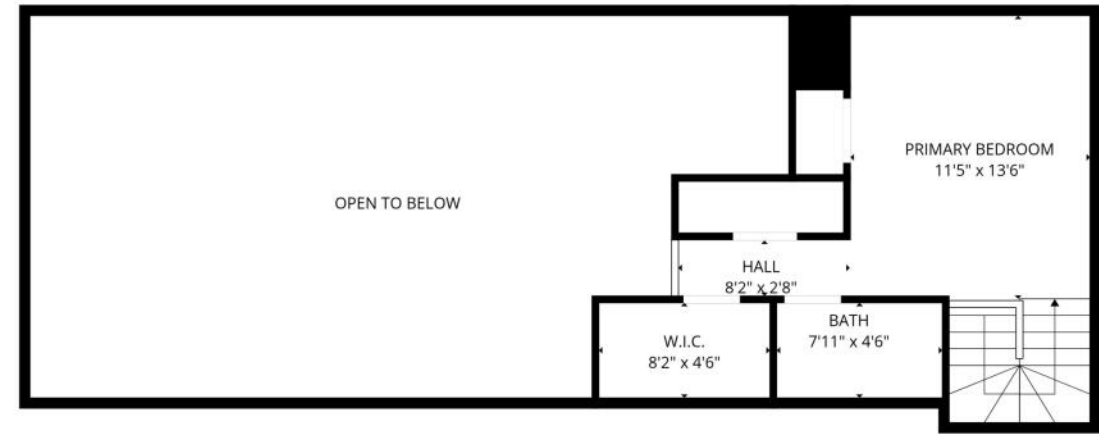
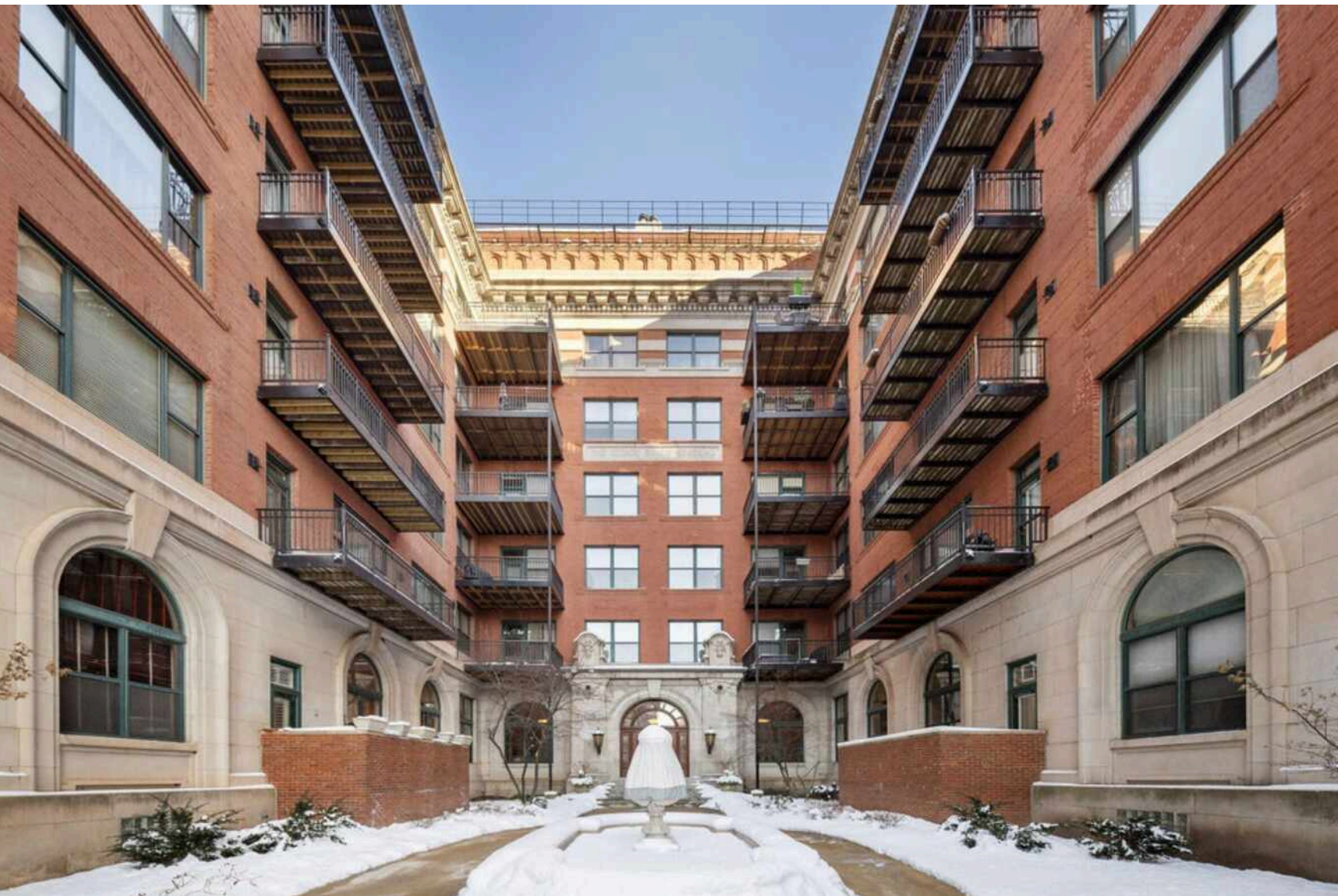
**ASSESSMENTS: \$579 / MONTH**

INDOOR PARKING INCLUDED. Welcome to an exceptional opportunity at 1439 S Michigan Avenue, Unit 104 in the highly sought-after Trevi Square, a landmark historic building in Chicago's vibrant South Loop. Originally constructed in 1908 and thoughtfully converted into condominium residences, Trevi Square stands as a beautifully preserved example of early 20th-century industrial architecture and is recognized on the National Register of Historic Places, reflecting its architectural stature and contribution to Chicago's built heritage. This spacious 2-bedroom, 2-bath residence offers authentic loft character with soaring ceilings, expansive windows with custom shutters, abundant natural light, and classic exposed architectural elements that lend both scale and presence to the living spaces, marrying historic charm with contemporary lifestyle comfort. Featuring in-unit laundry for day-to-day convenience and generous interior storage, this thoughtfully configured home also boasts a grand fireplace that creates a warm and inviting focal point for the open living area. One of the defining features of this remarkable unit is the private patio overlooking the building's beautifully landscaped central courtyard, providing a rare and serene outdoor retreat within the urban core. This home is further distinguished as one of the select residences in Trevi Square to include an indoor garage parking space, an uncommon and highly desirable amenity in this location, and it also includes additional private storage in the building to support organizational needs. Trevi Square Lofts offers residents a professionally managed environment with gated entry, elevator service, secure access, bike storage, and on-site storage amenities, all contributing to a sense of comfort, security, and ease of living. Perfectly positioned along Michigan Avenue, this residence provides effortless access to Grant Park, Museum Campus, the lakefront, Soldier Field, world-class dining, shopping, cultural attractions and robust transit options, making it an ideal home for those seeking both historic character and modern urban convenience. The building's classic facade, distinctive architectural presence, and recognized historic designation create a distinctive and meaningful address that stands out among South Loop properties, offering residents a rare combination of Chicago heritage, sophisticated living, and everyday functionality.

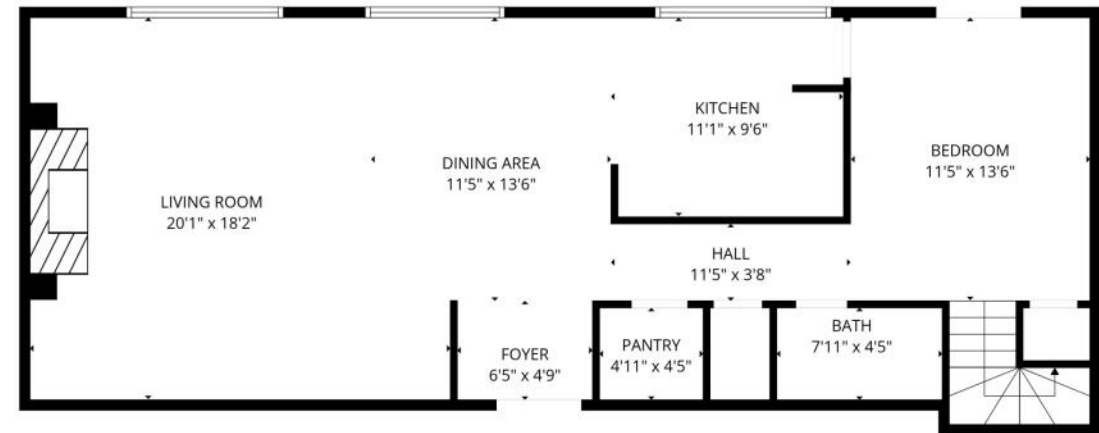








2nd floor



1st floor

FLOOR PLAN CREATED BY CUBICASA APP. MEASUREMENTS DEEMED HIGHLY RELIABLE BUT NOT GUARANTEED.



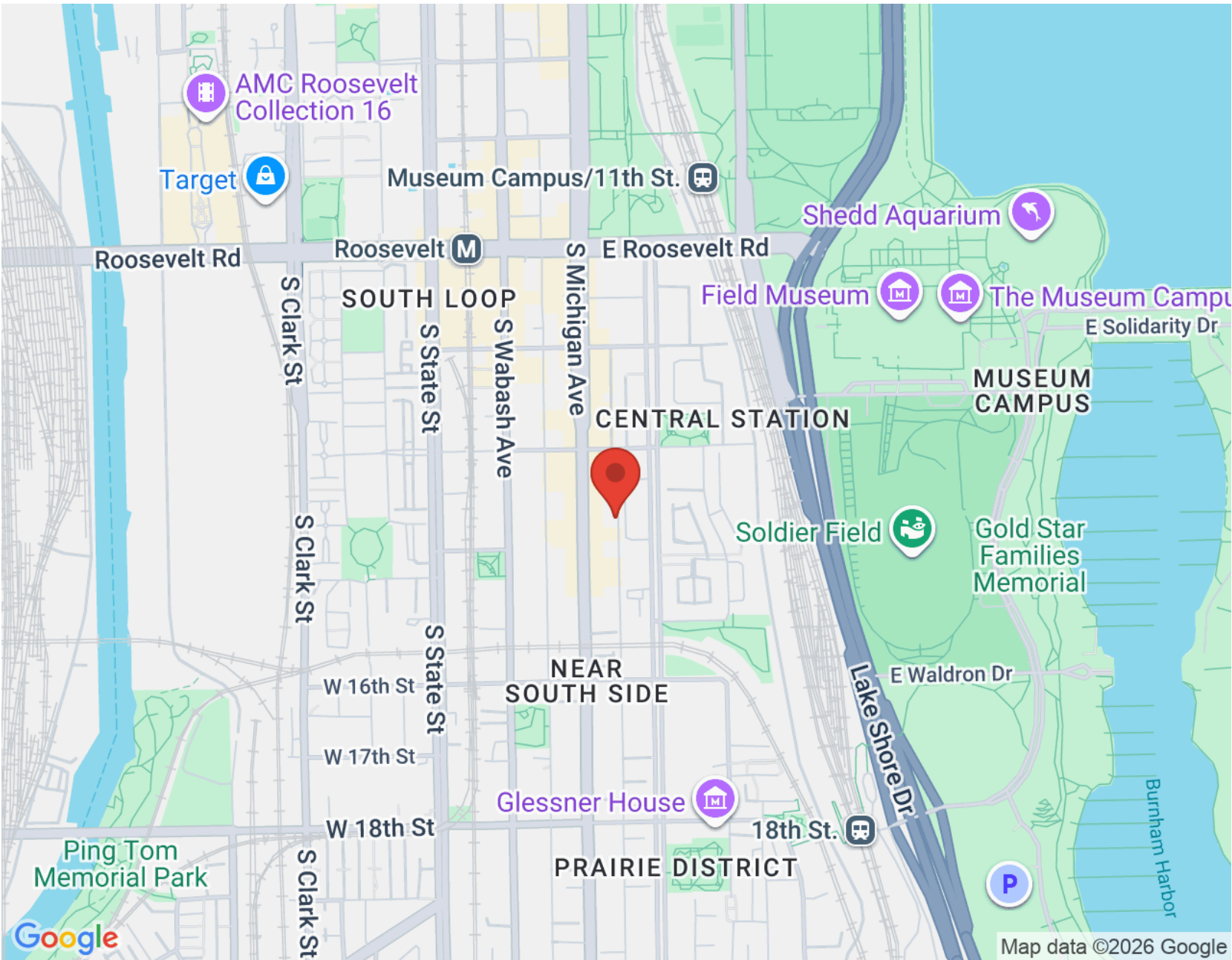
CHARACTERIZED BY TOWERING HIGH RISES AND HISTORIC POCKETS THAT REFLECT THE AREA'S STORIED PAST, THE **SOUTH LOOP** IS A DISTINCTIVE CHICAGO NEIGHBORHOOD.

Chicago's original Gold Coast in the late 19th century, the South Loop was once home to the likes of Marshall Field, George Pullman, and Philip Armour. Today the vibrant neighborhood is known for its access to the lakefront, shops, restaurants, parks, Museum Campus, and The Loop.

The South Loop is comprised of several historic areas including Printer's Row, which features a number of buildings that have been converted into residential lofts, along with Motor Row District and Prairie Avenue District. Meanwhile, several apartment and condominium buildings are under construction, bringing thousands of new residences to the neighborhood.

The South Loop's housing boom has brought with it an influx of retailers along with eateries and nightlife on South Michigan Avenue. The Roosevelt Collection is a popular destination featuring a movie theater and an assortment of retailers.

Museum Campus is the cultural hub of the South Loop featuring attractions including the Field Museum, Shedd Aquarium, Adler Planetarium, and Soldier Field. Residents also enjoy being in close proximity to Northerly Island and public transportation including the CTA's Roosevelt station.



NOTES \_\_\_\_\_

\_\_\_\_\_

\_\_\_\_\_

\_\_\_\_\_

\_\_\_\_\_

\_\_\_\_\_

\_\_\_\_\_

\_\_\_\_\_

\_\_\_\_\_

\_\_\_\_\_

\_\_\_\_\_

\_\_\_\_\_



## HEIDI PICARD

773.960.3031

HEIDIPICARD@ATPROPERTIES.COM

HEIDIPICARDPROPERTIES.COM