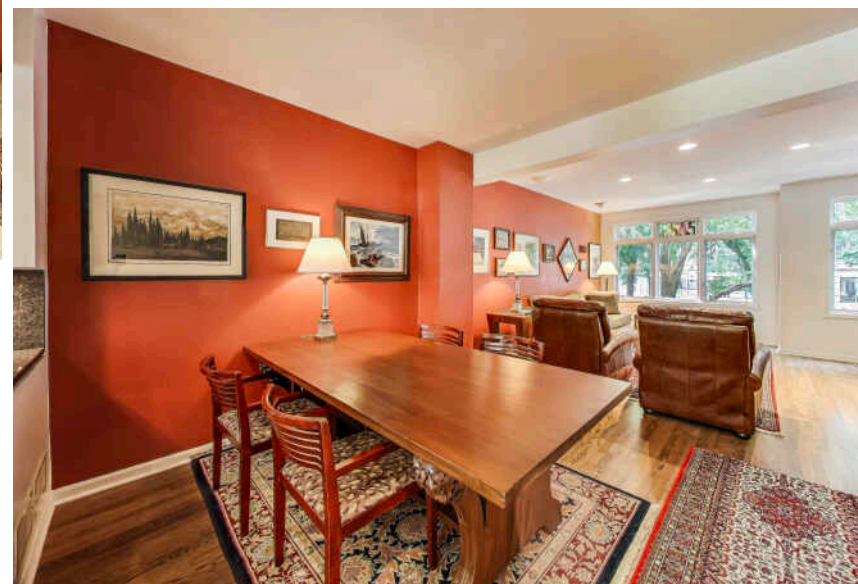


1441 S INDIANA AVENUE
SOUTH LOOP



@properties®

CHRISTIE'S
INTERNATIONAL REAL ESTATE



ROOM DIMENSIONS

LIVING ROOM : 19' × 14'

DINING ROOM : 12' × 09'

KITCHEN : 15' × 13'

PRIMARY BEDROOM : 14' × 12'

SECOND BEDROOM : 12' × 12'

1441 S. INDIANA AVE.

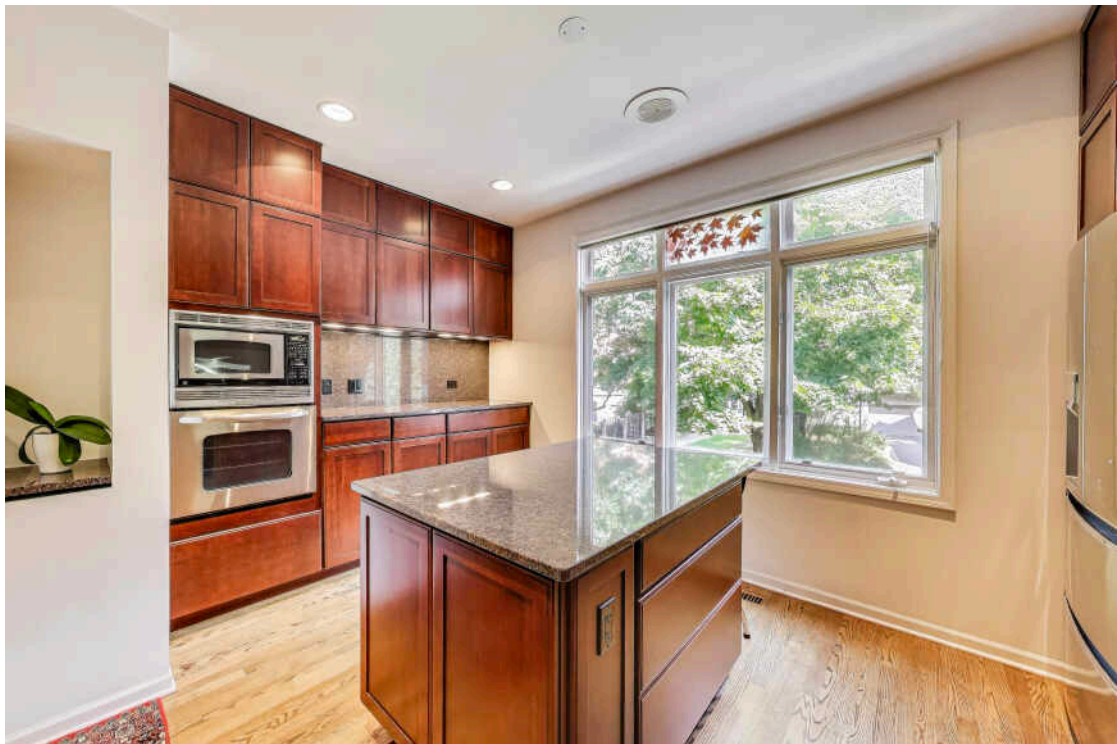
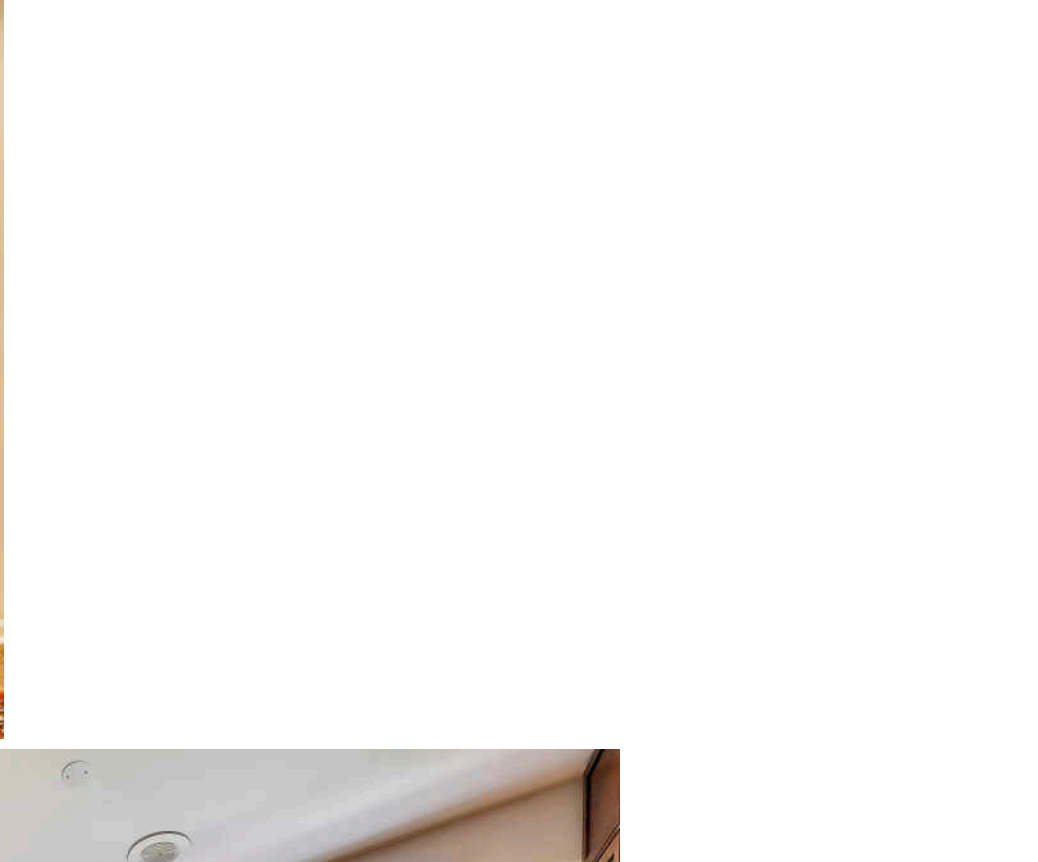
Park Row townhome in the highly sought-after Central Station neighborhood! This updated 4-story, 2-bedroom + den, 2.5 bath home welcomes you with an inviting garden patio overlooking tree-lined Indiana Avenue. The first floor features a versatile den/study with an adjacent powder room and access to a 1.5 car garage with ample storage. On the second floor, you'll find an updated chef's kitchen with custom cabinets, granite countertops, an island & built-in convection oven. Open-concept living and dining areas are complete with hardwood floors, a wood-burning fireplace and charming west-facing windows that bring in natural light. The third floor is dedicated to the luxurious primary suite, boasting cathedral ceilings, a MASSIVE walk-in closet, and a SPA-inspired bathroom with a large walk-in shower featuring dual shower heads , body sprays, custom tile work, and a separate soaking tub and a hidden laundry room. The fourth floor is a private bedroom suite with a full bath and ample closet space with East views of the landscaped courtyard. Steps from Grant Park, Museum Campus, shopping, dining, the lakefront, close to transportation and MORE.

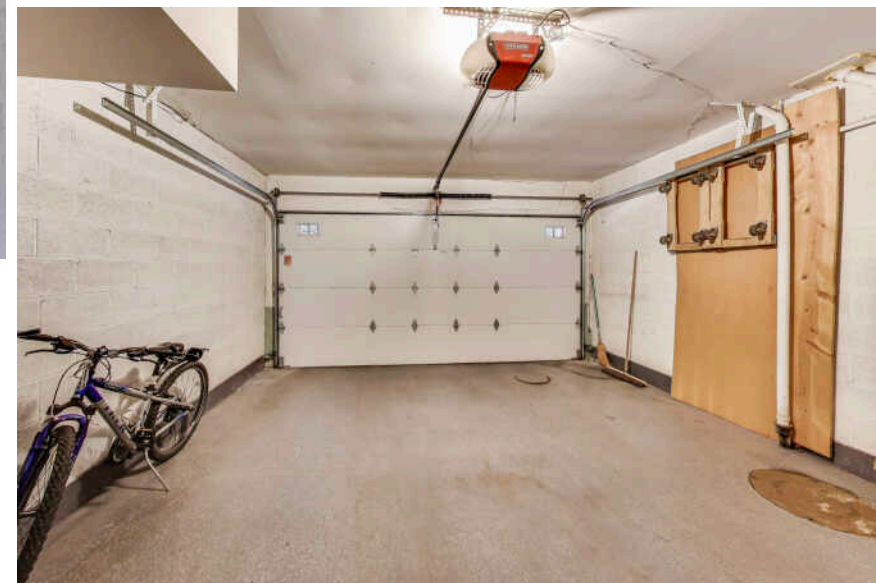
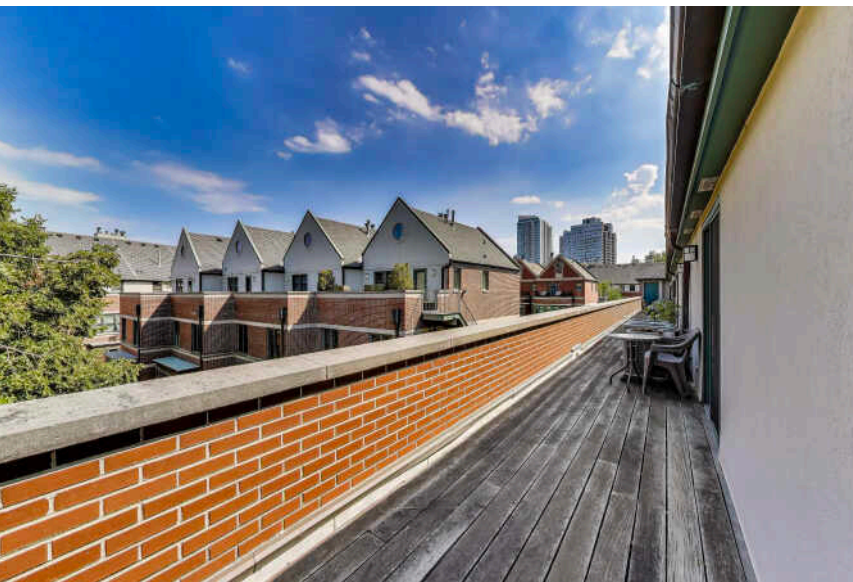
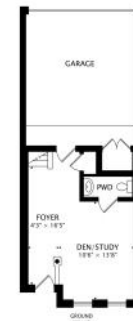
2 BEDROOM

2.1 BATH

TAXES: \$12,854

ASSESSMENTS: \$475 / MONTH







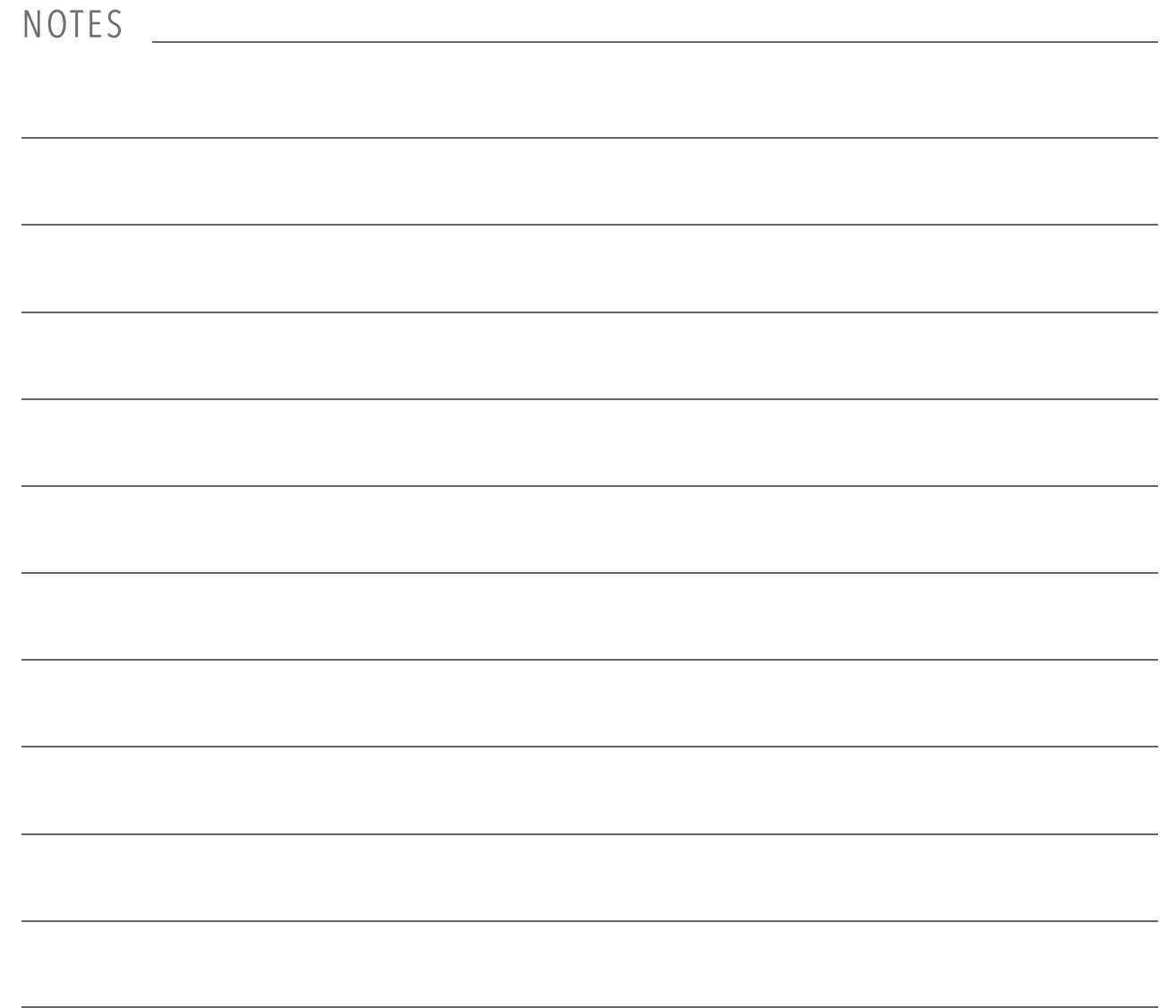
CHARACTERIZED BY TOWERING HIGH RISES AND HISTORIC POCKETS THAT REFLECT THE AREA'S STORIED PAST, THE **SOUTH LOOP** IS A DISTINCTIVE CHICAGO NEIGHBORHOOD.

Chicago's original Gold Coast in the late 19th century, the South Loop was once home to the likes of Marshall Field, George Pullman, and Philip Armour. Today the vibrant neighborhood is known for its access to the lakefront, shops, restaurants, parks, Museum Campus, and The Loop.

The South Loop is comprised of several historic areas including Printer's Row, which features a number of buildings that have been converted into residential lofts, along with Motor Row District and Prairie Avenue District. Meanwhile, several apartment and condominium buildings are under construction, bringing thousands of new residences to the neighborhood.

The South Loop's housing boom has brought with it an influx of retailers along with eateries and nightlife on South Michigan Avenue. The Roosevelt Collection is a popular destination featuring a movie theater and an assortment of retailers.

Museum Campus is the cultural hub of the South Loop featuring attractions including the Field Museum, Shedd Aquarium, Adler Planetarium, and Soldier Field. Residents also enjoy being in close proximity to Northerly Island and public transportation including the CTA's Roosevelt station.





SANTIAGO MORENO

SENIOR REAL ESTATE BROKER

312-388-2479

SANTIAGO@ATPROPERTIES.COM

WWW.BUYORSELLAHOUSE.COM



All specifications, features, designs, price, assessments, taxes and materials are subject to change without notice. Depicted floor plans and architectural renderings are only an artist's impression.

