

1450 CHANTILLY BOULEVARD
HIGHLAND PARK





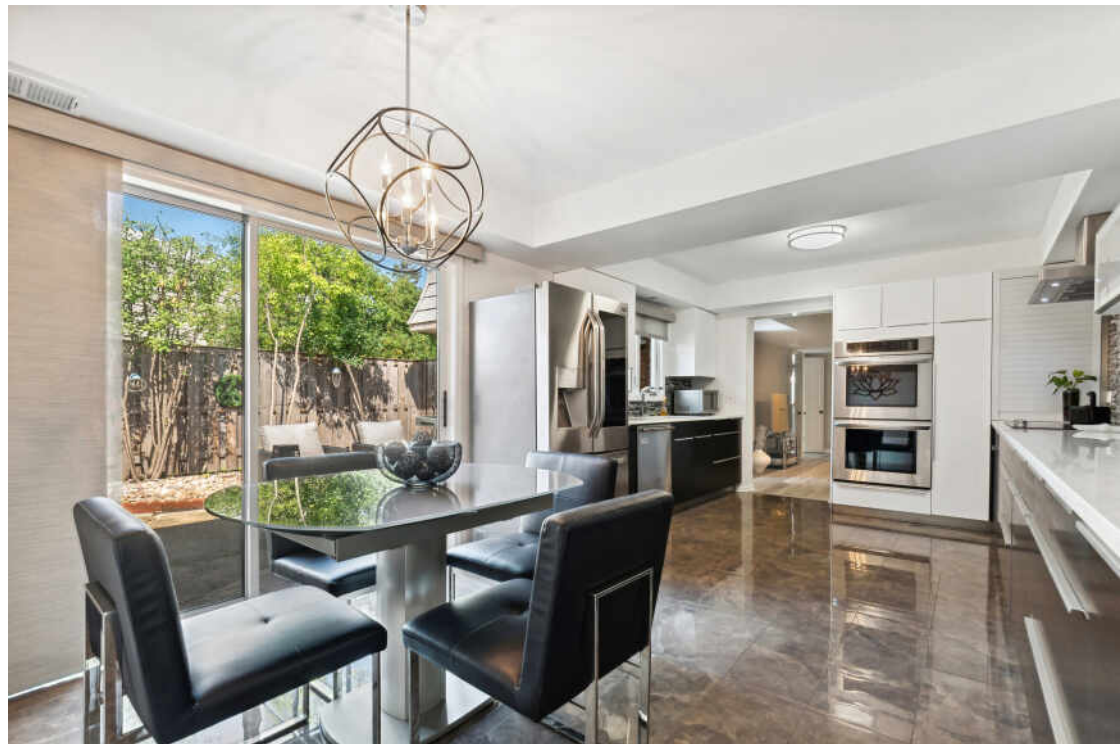
ROOM DIMENSIONS

LIVING ROOM : 24' x 14'
FAMILY ROOM : 18' x 12'
DINING ROOM : 14' x 13'
KITCHEN : 22' x 12'
PRIMARY BEDROOM : 22' x 13'
SECOND BEDROOM : 14' x 12'
THIRD BEDROOM : 11' x 11'

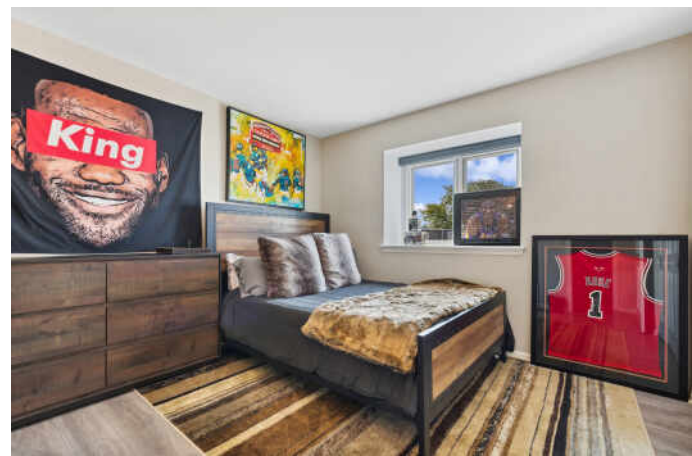
3 BEDROOM
2.1 BATH
TAXES: \$9,246
ASSESSMENTS: \$625 / MONTH

Gorgeous END unit townhouse in Chantilly! Largest floor plan in the community! 3 Bedrooms, 2.1 baths. LOTS of sunlight! Updated kitchen in 2020, new double oven, fridge, and cooktop in 2022. Stunning cabinets with large eat in area. Sliders from kitchen to outside patio. All the rooms are very spacious and have plenty of closet space. New flooring on both floors. New vanities in all bathrooms. Large attached 2-car garage. Large private newly fenced patio great entertaining area. Newer roof, fence. Custom window treatments, new garage door and motor. Nothing to do but move in and enjoy this wonderful townhouse!











YOU HAD ME AT RAVINIA – YET THERE’S SO MUCH MORE TO LOVE ABOUT **HIGHLAND PARK.**

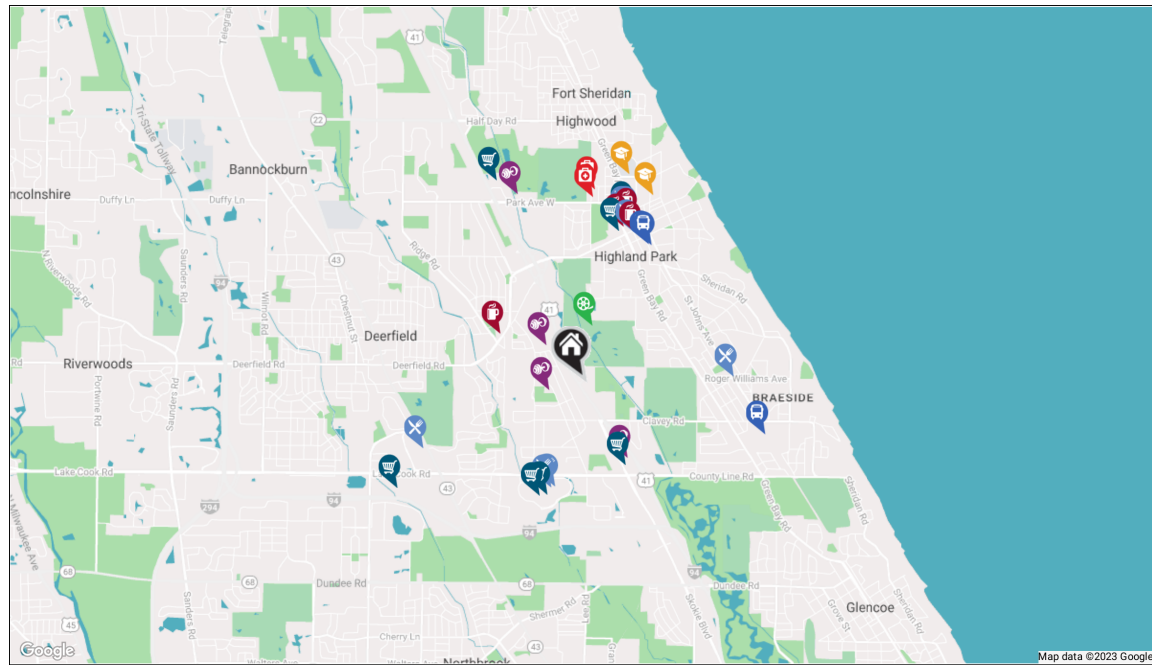
Located 23 miles north of downtown Chicago, Highland Park is known for its vibrant downtown business district, abundant recreational facilities, and world-class amenities.

The city is home to several landmarks, including homes designed by Frank Lloyd Wright. Highland Park also created the first community land trust in Illinois to develop and preserve high-quality affordable housing for residents.

High-end homes in Highland Park range from custom lakefront mansions to multi-million-dollar contemporary estates. Mid-century moderns and in-town bungalows are plentiful, while a number of luxury condominiums offer maintenance-free living close to downtown shops, restaurants, and commuter train stations.

Residents enjoy two public beaches and the North Shore Yacht Club, a not-for-profit membership organization for sailors, kayakers, power boaters, and stand-up paddle boarders. Downtown Highland Park thrives year-round thanks to an eclectic mix of businesses including local restaurants, national retailers, and upscale boutiques.

Highland Park shines brightest in the summertime, when the sprawling outdoor Ravinia Festival welcomes the Chicago Symphony Orchestra and a diverse lineup of popular musicians. Ravinia attracts concert-goers from near and far, including locals and city-dwellers who can hop on the Metra train that conveniently stops at the festival gates.



RESTAURANTS

- Di Pescara
2124 NORTHBROOK COURT, 1.0 MI
- NM Cafe
5000 NORTHBROOK CT UPRR LEVEL, 1.0 MI
- Walker Bros. Original Pancake House
620 CENTRAL AVENUE, 1.4 MI
- Abigail's American Bistro
493 ROGER WILLIAMS AVENUE, 1.4 MI
- Michael's Grill & Salad Bar
1879 2ND STREET, 1.6 MI
- Carson's Prime Steaks & Famous Barbecue of Deerfield
200 WAUKEGAN ROAD, 1.6 MI
- Once Upon A Bagel
1888 1ST STREET, 1.6 MI

COFFEE SHOPS

- Harmony Coffee Bar
610 CENTRAL AVENUE STE 155, 1.4 MI
- Starbucks
1849 GREEN BAY ROAD STE 116, 1.5 MI
- Madame Zuzu's
1876 1ST STREET, 1.6 MI

SHOPPING

- AT&T Store
59 SKOKIE VALLEY ROAD, 0.8 MI
- Apple Northbrook
1056 NORTHBROOK COURT, 1.1 MI
- SEPHORA
1314 NORTHBROOK COURT, 1.1 MI
- Sunset Foods
1812 GREEN BAY RD, 1.4 MI
- The UPS Store
1954 1ST STREET, 1.6 MI
- The Home Depot
655 LAKE COOK ROAD, 2.0 MI

HEALTH CLUBS

- Park District of Highland Park
636 RIDGE RD, 0.3 MI
- The Center for Yoga and Meditation
1576 GROVE AVENUE, 0.5 MI

LA Fitness

- 115 SKOKIE VALLEY ROAD, 0.8 MI
- Recreation Center of Highland Park
1207 PARK AVE W, 1.8 MI

HOSPITALS

- Highland Park Hospital Medical Office Building
767 PARK AVE W, 1.7 MI
- NorthShore Highland Park Hospital
777 PARK AVE W, 1.8 MI

SCHOOLS

- Elm Place Middle School
2031 SHERIDAN ROAD, 1.8 MI
- Highland Park High School
433 VINE AVENUE, 2.0 MI

ENTERTAINMENT

- Sunset Valley Golf Club
1390 SUNSET RD, 0.5 MI

TRANSIT

- Highland Park
1700 SAINT JOHNS AVENUE, 1.4 MI
- Central Train Station West Parking Lot
1698 1ST ST, 1.4 MI
- Ravinia Park
418 SHERIDAN ROAD, 1.7 MI

NOTES



TAMI LEVITON

(847) 962-3850

TAMILEVITON@ATPROPERTIES.COM

WWW.TAMILEVITON.COM

