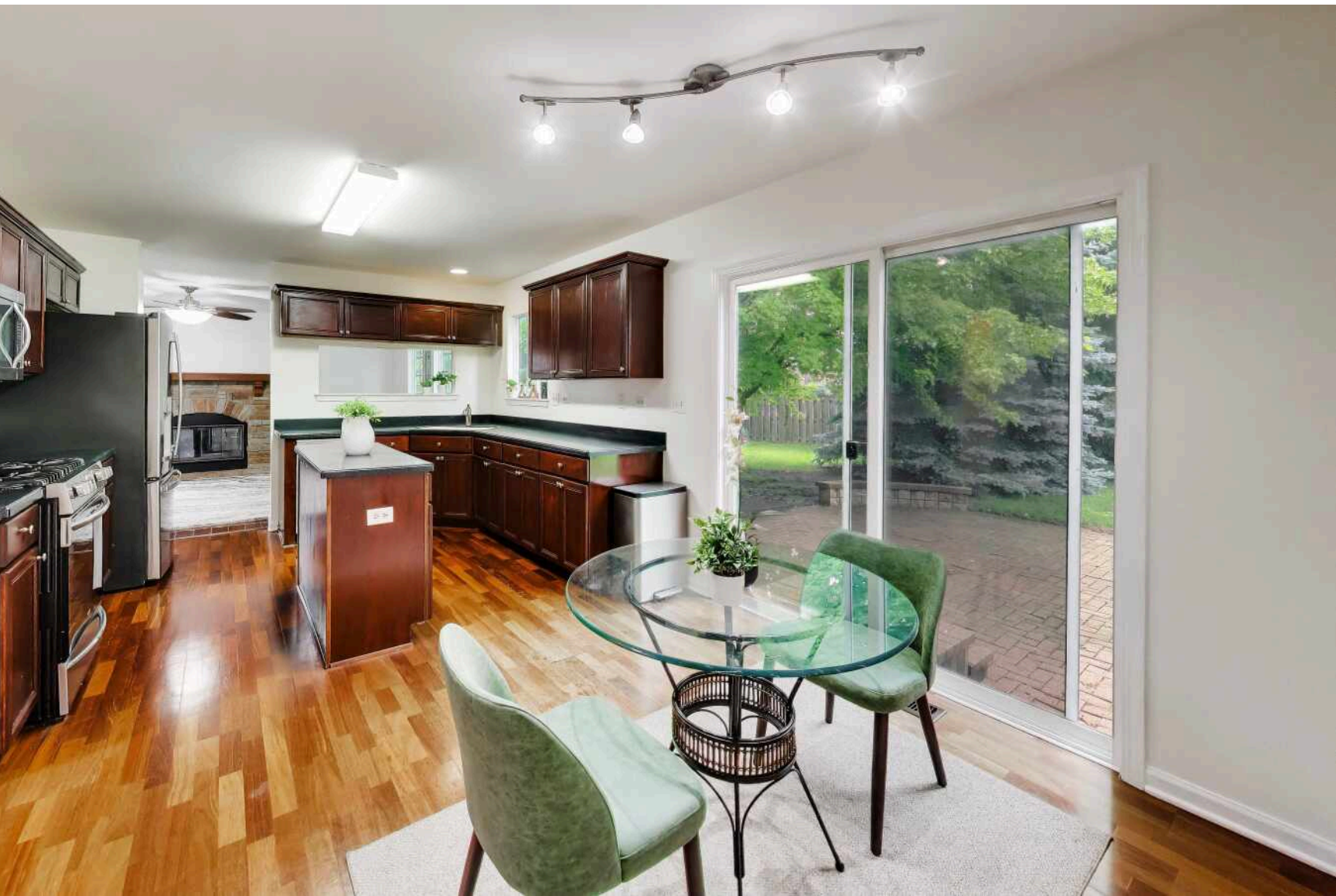


1451 S BACON ROAD
ROUND LAKE





ROOM DIMENSIONS

LIVING ROOM : 12' x 14'

DINING ROOM : 11' x 12'

KITCHEN : 9' x 12'

BREAKFAST AREA : 9' x 9'

FAMILY ROOM : 13' x 18'

PRIMARY BEDROOM : 14' x 17'

BEDROOM 2 : 12' x 12'

BEDROOM 3 : 12' x 11'

BEDROOM 4 : 12' x 11'

4 BEDROOM

2.1 BATH

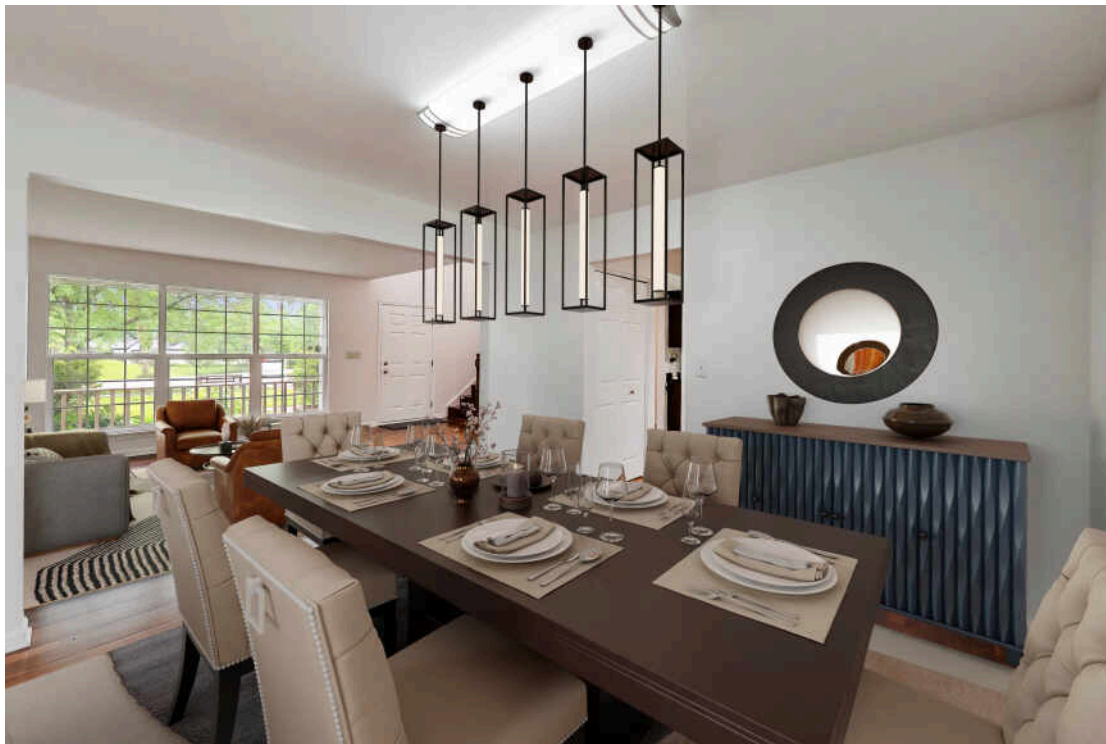
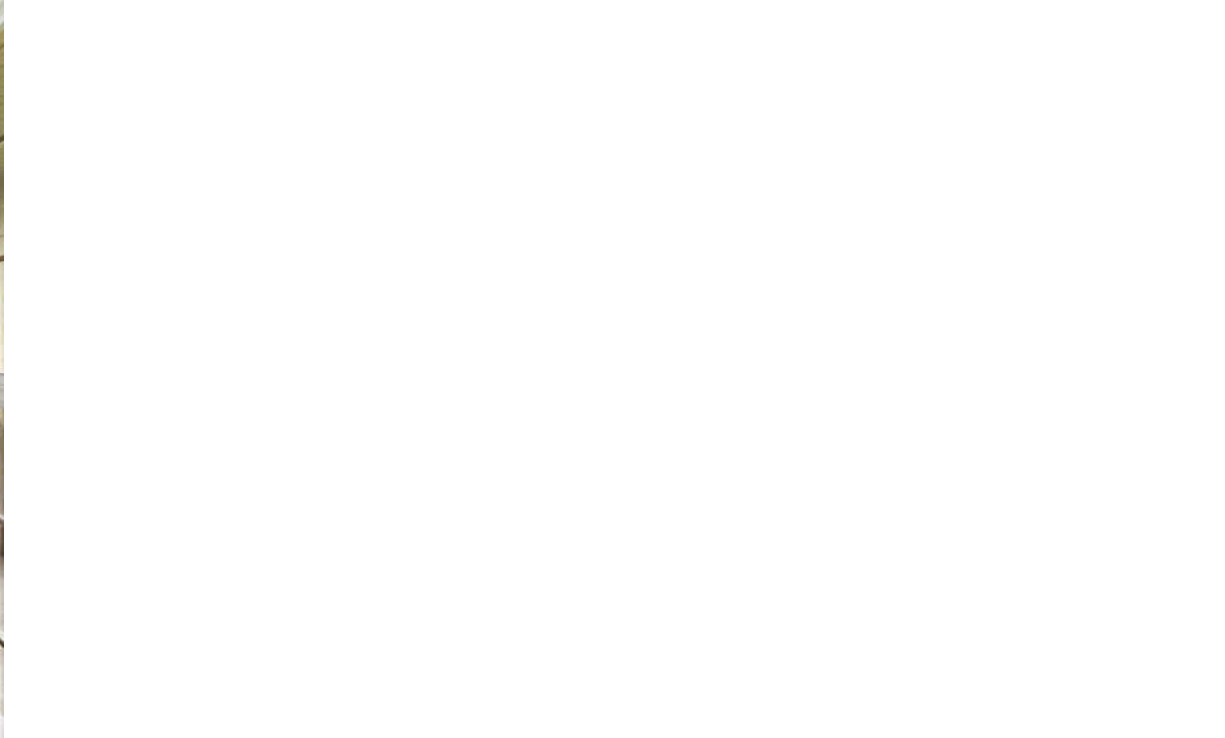
TAXES: 8814.86

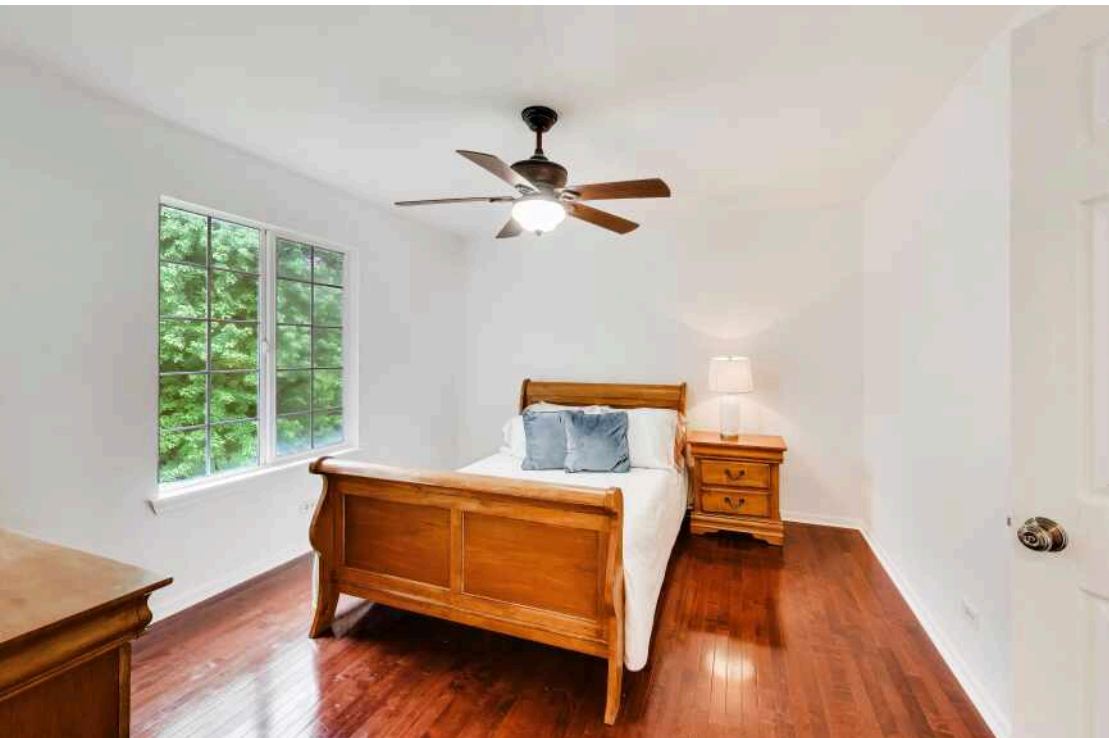
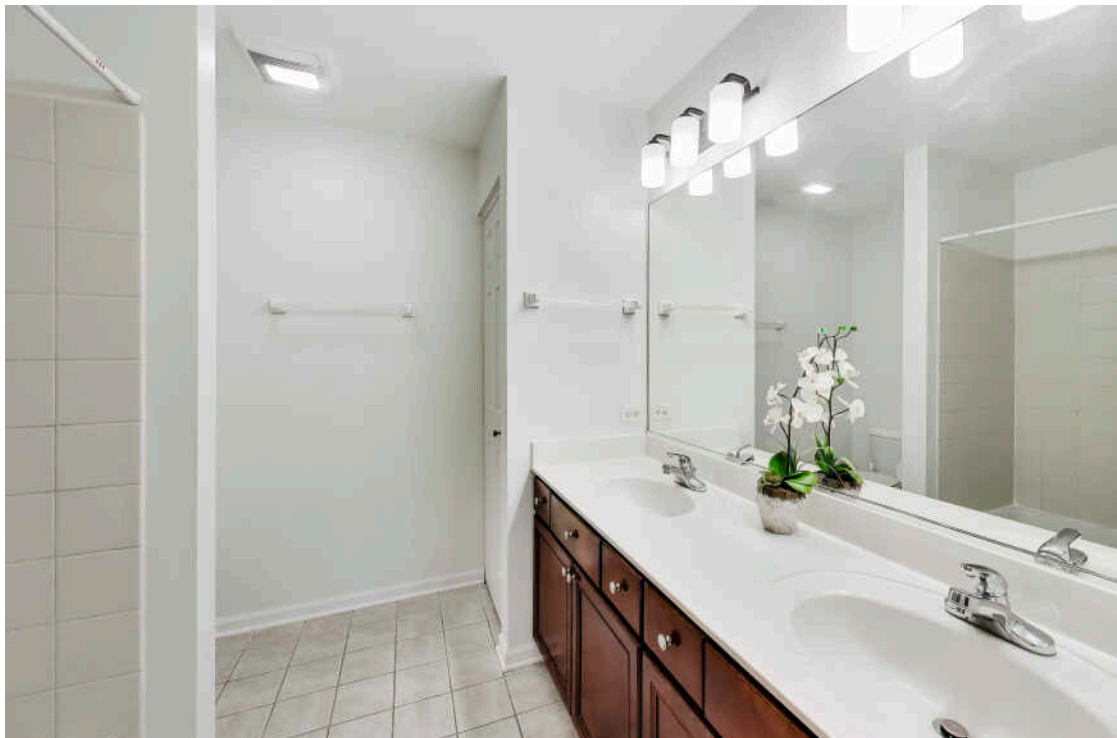
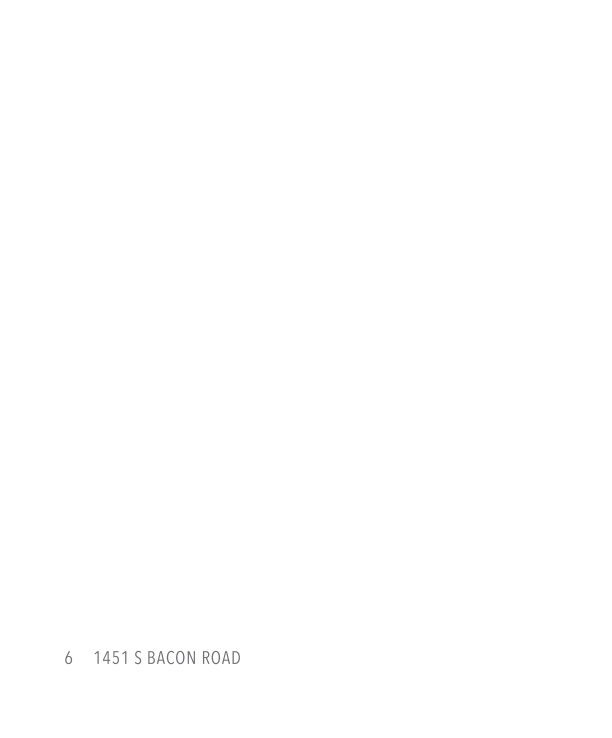
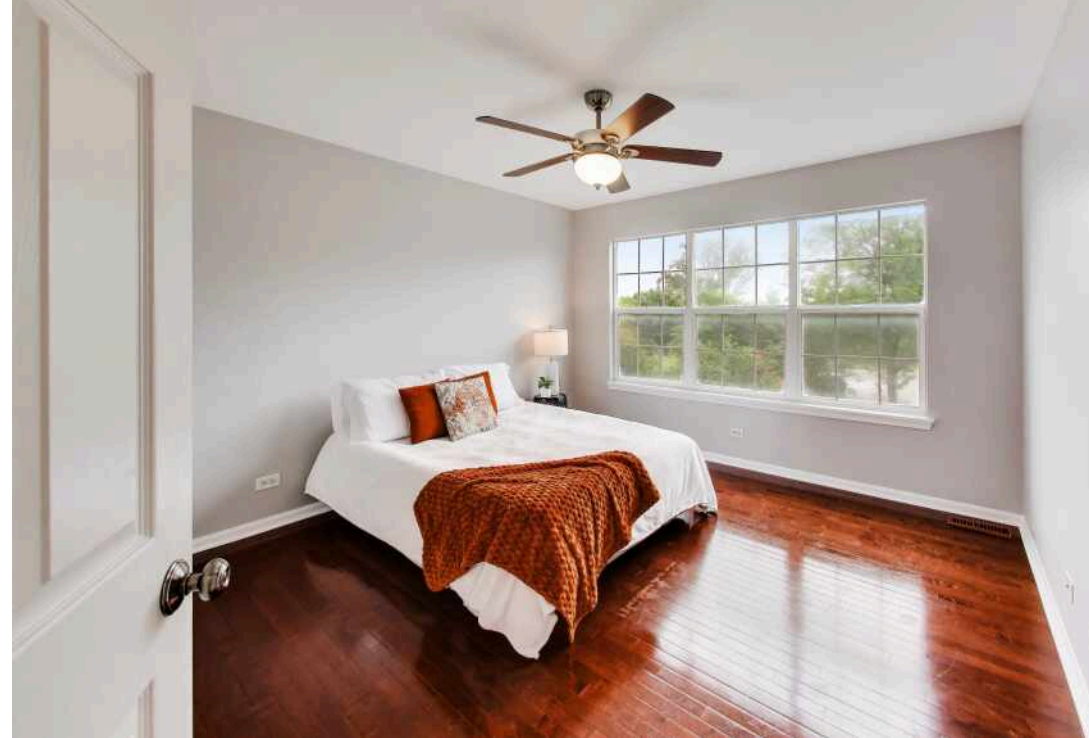
ASSESSMENTS: \$600/YEAR

WHERE PRIVACY MEETS POSSIBILITY

Tucked away on a quiet cul-de-sac and set on a rare half-acre lot, this move-in-ready home offers the SPACE, SERENITY, AND LOCATION that today's buyers rarely find in one package. Features include:

- Rare ½-acre homesite
- Fremont School District 79/Mundelein High School District 120
- Quiet cul-de-sac setting
- Peaceful front porch
- Move-in ready, bright, inviting interior
- Eat-in kitchen with center island
- Fireplace & surround sound ready family room
- Primary bedroom en-suite
- Spacious bedrooms
- Walk-in closets and ample storage
- Full, unfinished basement with roughed in full bath plumbing
- Expansive backyard retreat
- Large paver patio with seating
- 3-car garage
- LOW taxes
- Convenient access to shopping, dining, and daily essential







LOCATED APPROXIMATELY 50 MILES FROM CHICAGO AND MILWAUKEE, **ROUND LAKE** IS A CHARMING COMMUNITY SITUATED ALONG ITS NAMESAKE LAKE.

In addition to fishing and boating on Round Lake, residents have access to recreational activities from the local park district, library, and open green space, which create a sense of charm and togetherness within the community.

Offering rustic character and breathtaking natural surroundings, Round Lake boasts several area parks that are managed by the Round Lake Area Park District. The park district also offers various recreational programs throughout the year and maintains the village's Sports Center and public 18-hole golf course.

Round Lake's developing downtown is home to a Metra station that provides daily service to Chicago.



SONIA CISTERNINO

REAL ESTATE BROKER, APPRAISER & ADVISOR

847.445.7477

SONIA@ATPROPERTIES.COM

SONIA \$ELL\$