

1456 CHURCHILL LANE
GRAYSLAKE





ROOM DIMENSIONS

LIVING ROOM : 16' × 12'

FAMILY ROOM : 16' × 12'

KITCHEN : 13' × 12'

PRIMARY BEDROOM : 16' × 12'

SECOND BEDROOM : 11' × 11'

THIRD BEDROOM : 12' × 10'

FOURTH BEDROOM : 10' × 10'

RECREATION ROOM : 24' × 15'

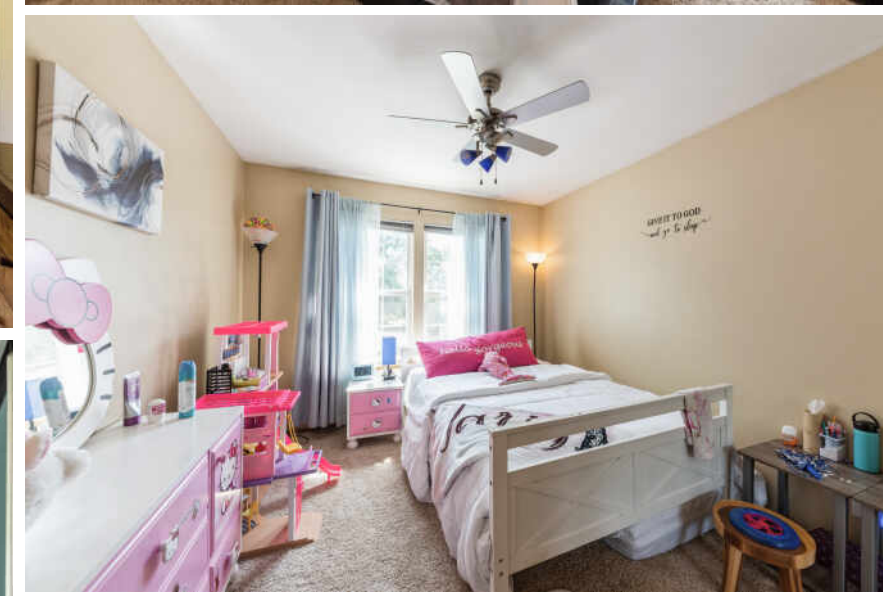
4 BEDROOM

3.1 BATH

WELCOME HOME

Welcome Home to Sought-After English Meadows! Don't miss this beautiful Normandy model with 4 bedrooms, 3.5 baths, and a finished basement - perfectly situated on the golf course with no backyard neighbors! Step inside to a bright, two-story living room with skylights that create an open, welcoming atmosphere. The eat-in kitchen flows seamlessly into the cozy family room, complete with a charming stone fireplace and sliding glass doors that lead out to your two-story deck and patio - ideal for relaxing or entertaining while enjoying the beautiful private backyard. The main floor also features a convenient laundry/mudroom and a home office for added functionality. Upstairs, the vaulted primary suite offers a spacious walk-in closet and an en suite bath with double vanity. Three additional bedrooms and a full hall bath complete the second level. The finished basement expands your living space with a large recreation room, a beautiful bar area, and an additional full bath - perfect for gatherings or movie nights. This move-in-ready home in desirable English Meadows truly has it all - open spaces, backs up to the golf course, and no backyard neighbors. Come see it today and fall in love!







HOME TO A RECREATIONAL LAKE AND A VARIETY OF COMMUNITY EVENTS, **GRAYSLAKE** IS A VIBRANT VILLAGE IN CENTRAL LAKE COUNTY.

The lake remains at the center of the community and is a year-round attraction with fishing, swimming, and boating in the summer and ice fishing, hockey, and skating in the winter.

Grayslake retains its rural ambience with a historic downtown district and hometown celebrations such as a pet parade. There are also public golf courses, tennis courts, and recreational areas with swimming pools, skate parks, and ball fields. A 1,200-acre county forest preserve on the north side of town has a bird observation deck, trails, and wetlands.

The Grayslake Art Festival, Taste of Grayslake, and Grayslake Summer Days are popular attractions along with the Lake County Fair. Residents and visitors enjoy music, arts and crafts, carnival games, and local food vendors.

Grayslake has two train stations along Metra’s Milwaukee District North and North Central Service lines in addition to Pace bus routes throughout the village.



NOTES _____



CYNTHIA LENIHAN

847.736.1722

847-367-0500

CYNTHIALENIHAN@ATPROPERTIES.COM



All specifications, features, designs, price, assessments, taxes and materials are subject to change without notice. Depicted floor plans and architectural renderings are only an artist's impression.

