

1459 W WRIGHTWOOD AVENUE LINCOLN PARK



1459 W WRIGHTWOOD AVENUE • LINCOLN PARK

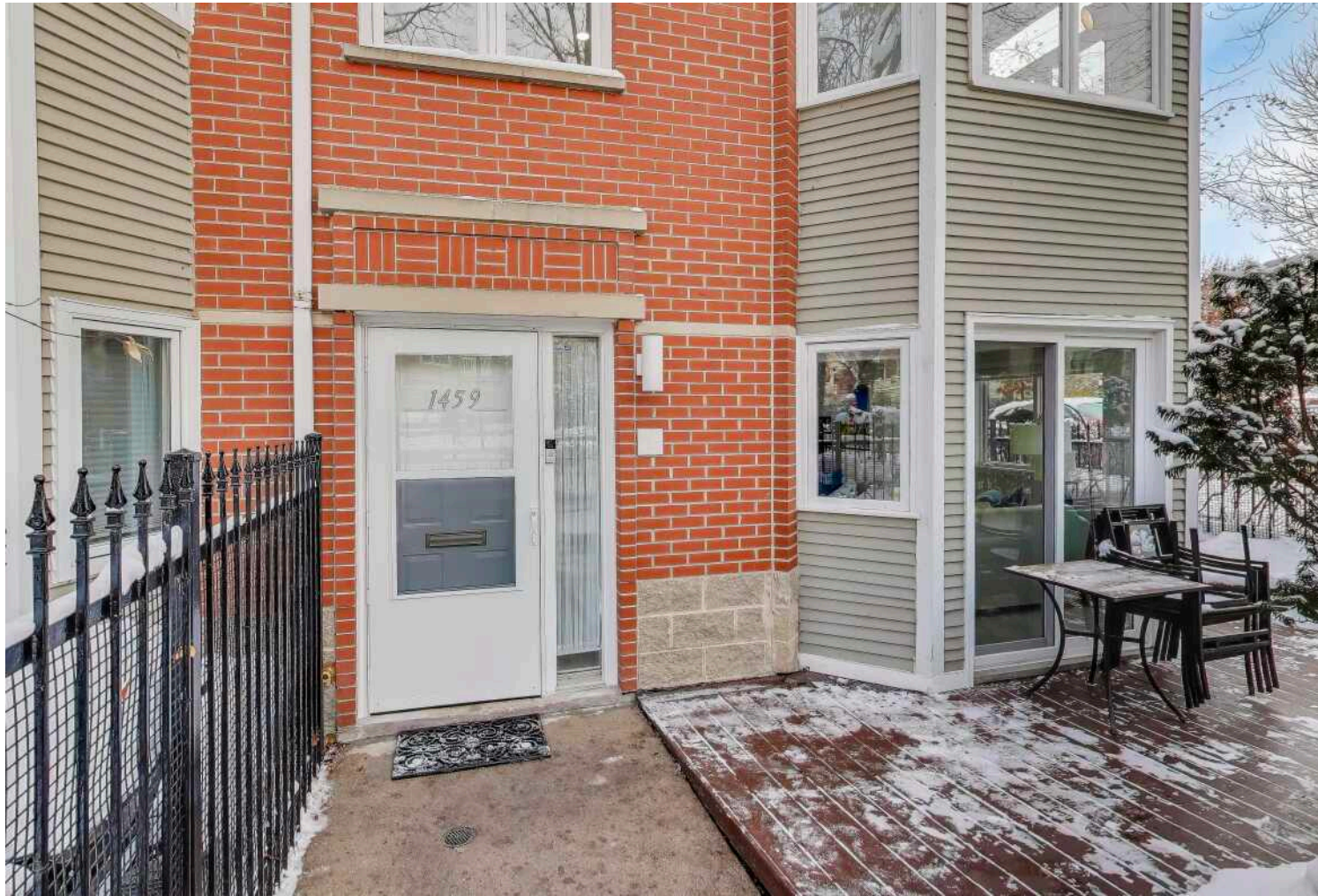


HEIDIE MASLO BROKER

312.617.2230 mobile
773.472.0200 office
hmaslo@atproperties.com

1459 W WRIGHTWOOD AVENUE • LINCOLN PARK





FRONT PATIO

1459 W WRIGHTWOOD AVENUE #1459 LINCOLN PARK

FEATURES

Sun-drenched South, West and North facing corner townhouse directly across from Wrightwood Park, offering four levels of beautifully updated living. The renovated, modern kitchen features Samsung Smart wi-Fi stainless steel appliances, tons of wood cabinets, gorgeous Cambria quartz white countertops and island and eat-in breakfast area. Spacious open floorplan of large dining and separate living space. Living space appointed with gas fireplace, which can be wood. Windows are suited with Bali motorized solar shade/blinds, all remote controlled. The dramatic turreted primary suite includes a luxurious spa-quality bath with double bowl vanity, marble rainfall shower, soaking tub. A second bedroom with its own ensuite bath and a vaulted third bedroom with exceptional flexibility, comfort and storage. The first-floor family room with new heated porcelain tile floors flows seamlessly to a private deck-perfect for entertaining or relaxing outdoors. A two-car garage with tons of storage completes this exceptional Lincoln Park home. List of upgrades in the additional information.



HEIDIE MASLO BROKER

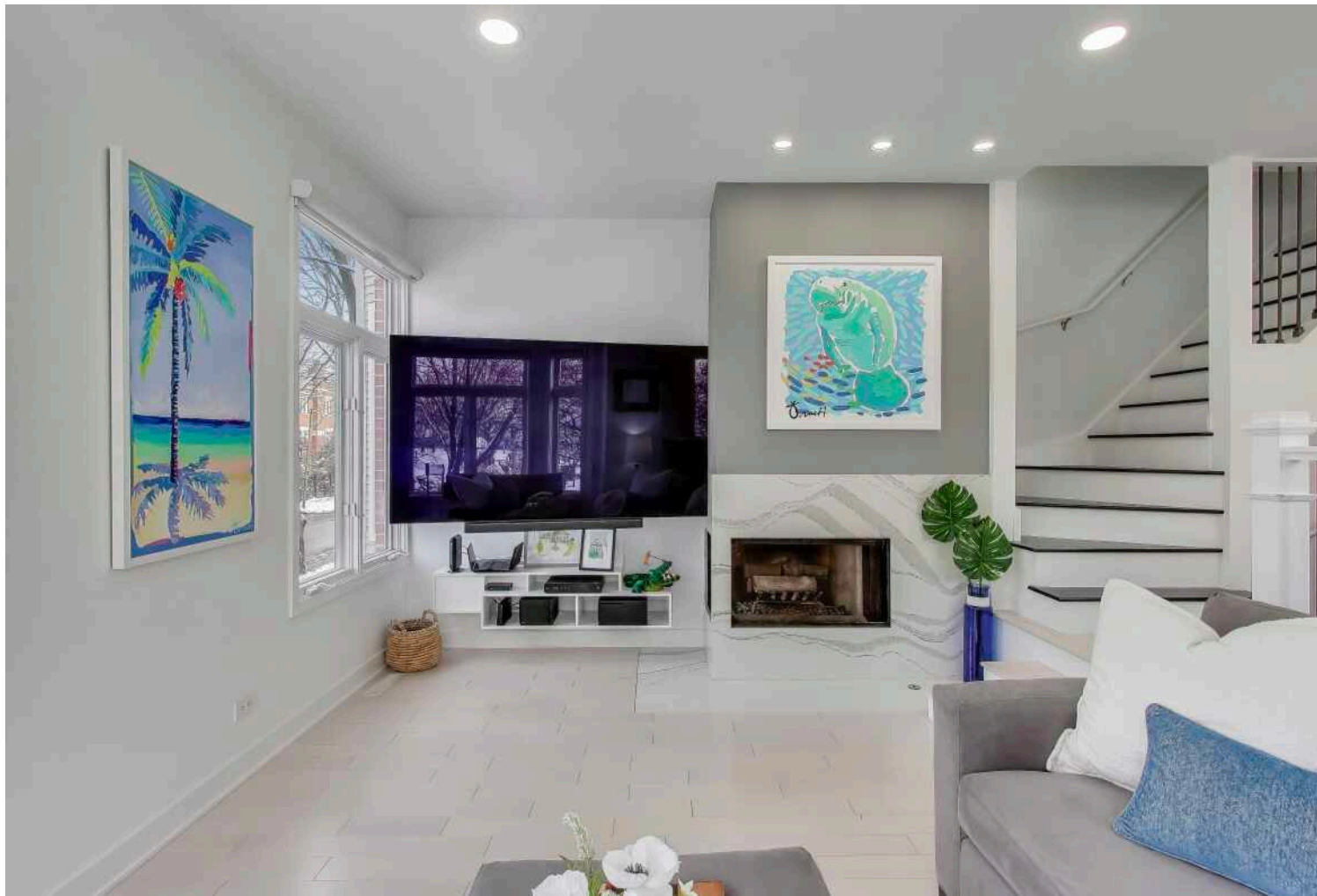
312.617.2230 mobile
773.472.0200 office

hmaslo@atproperties.com

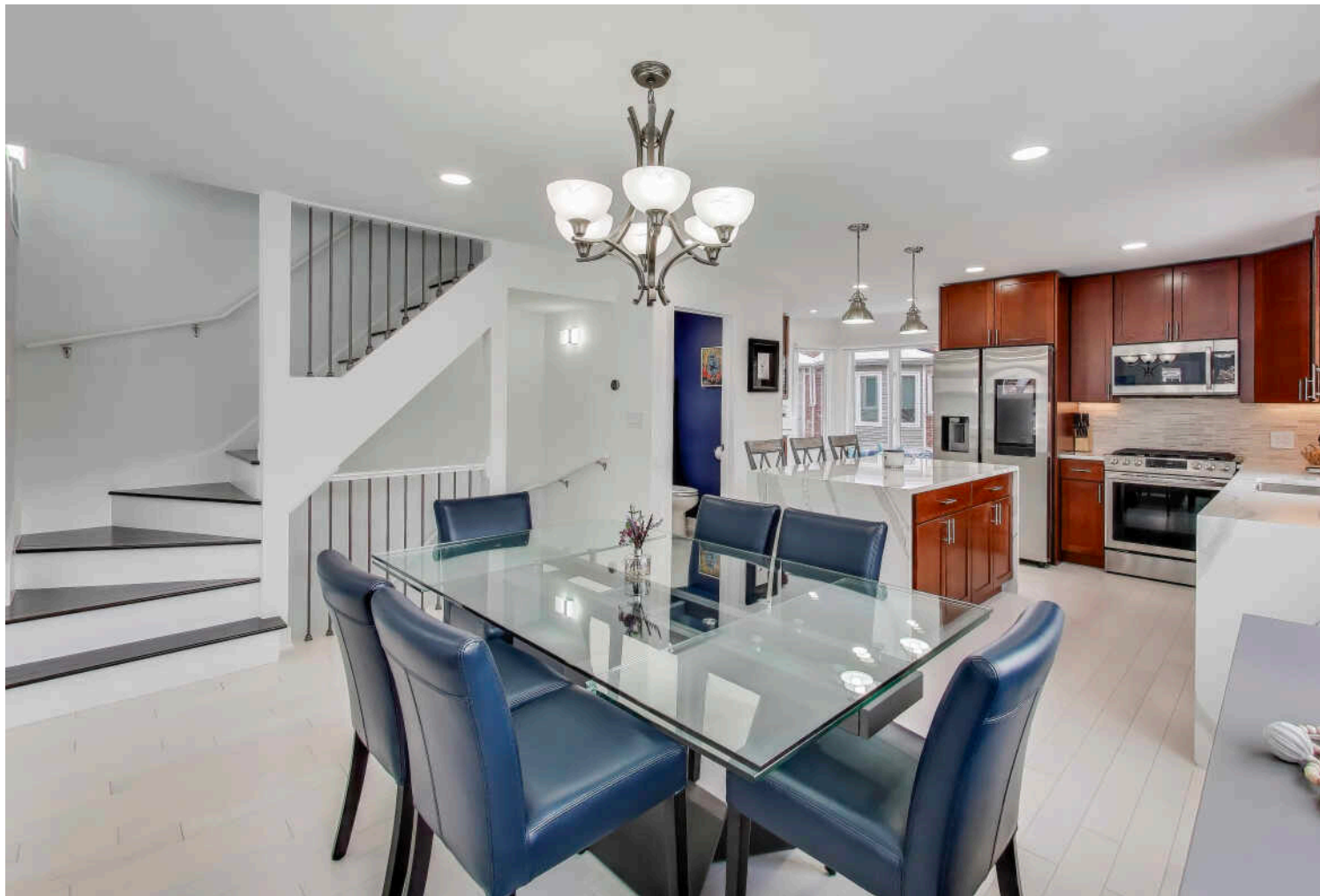


LIVING



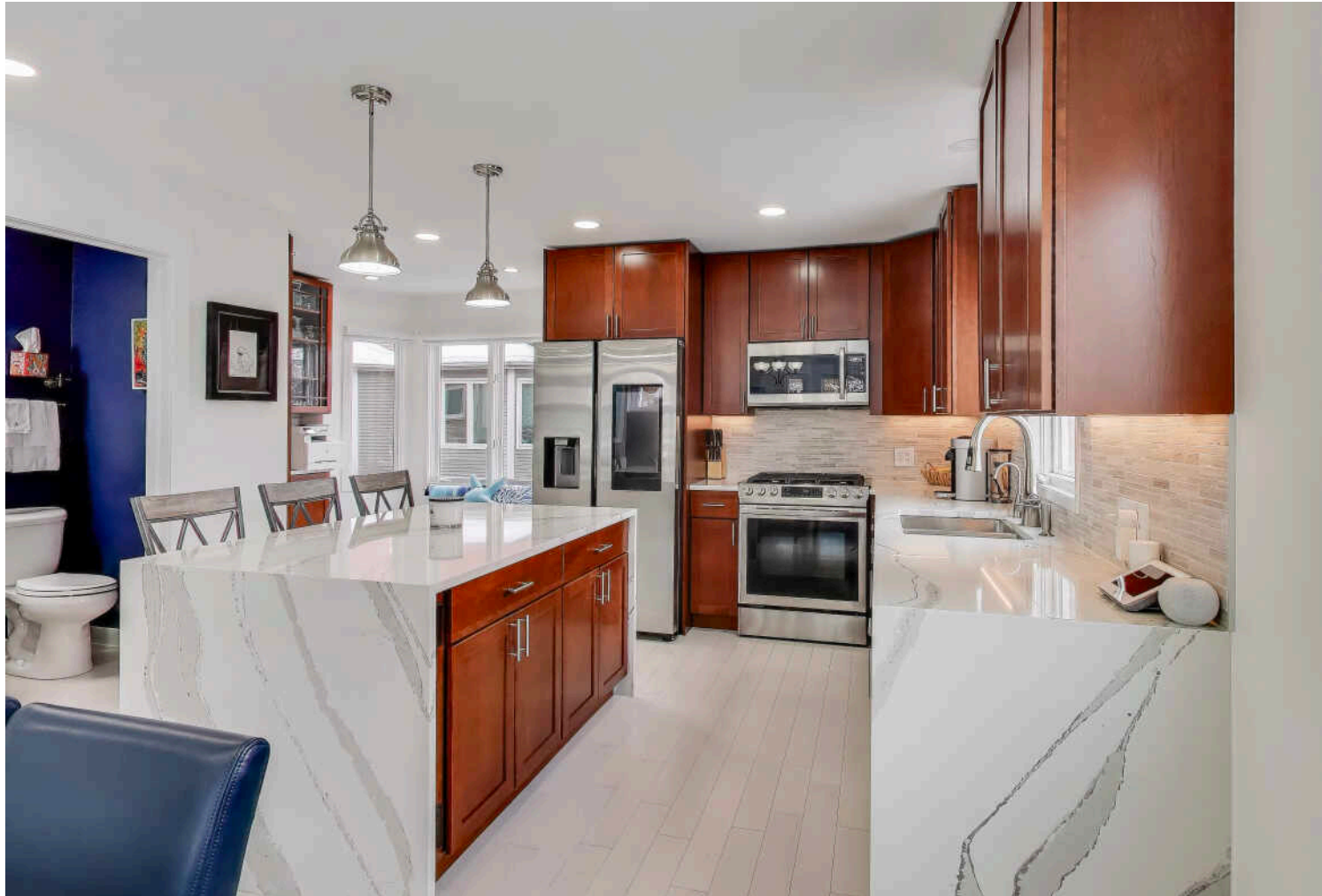








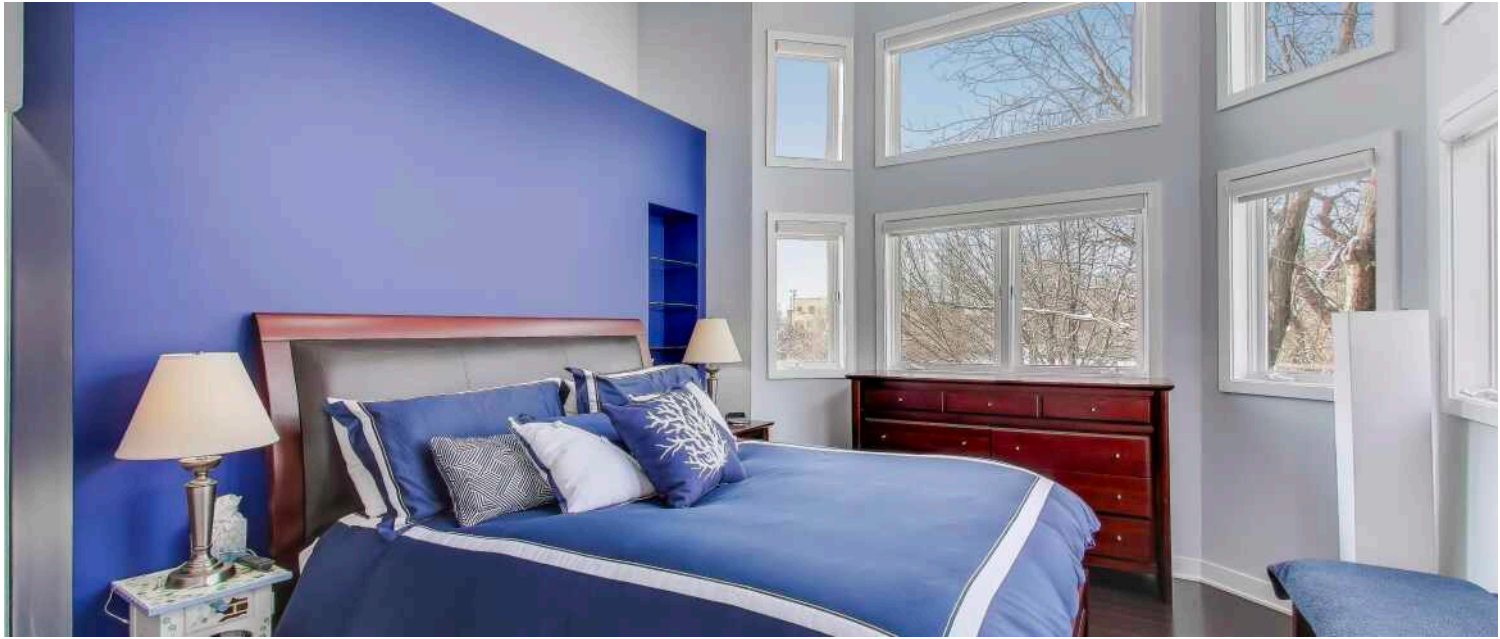
KITCHEN



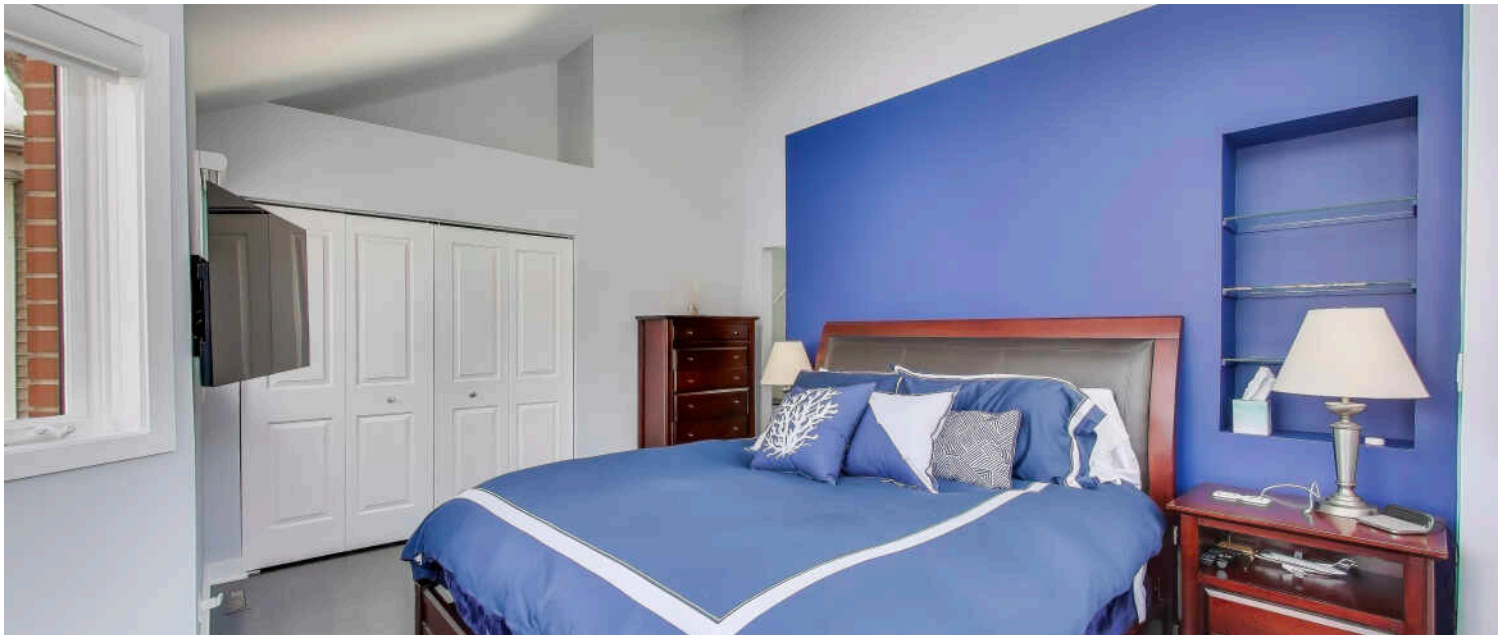




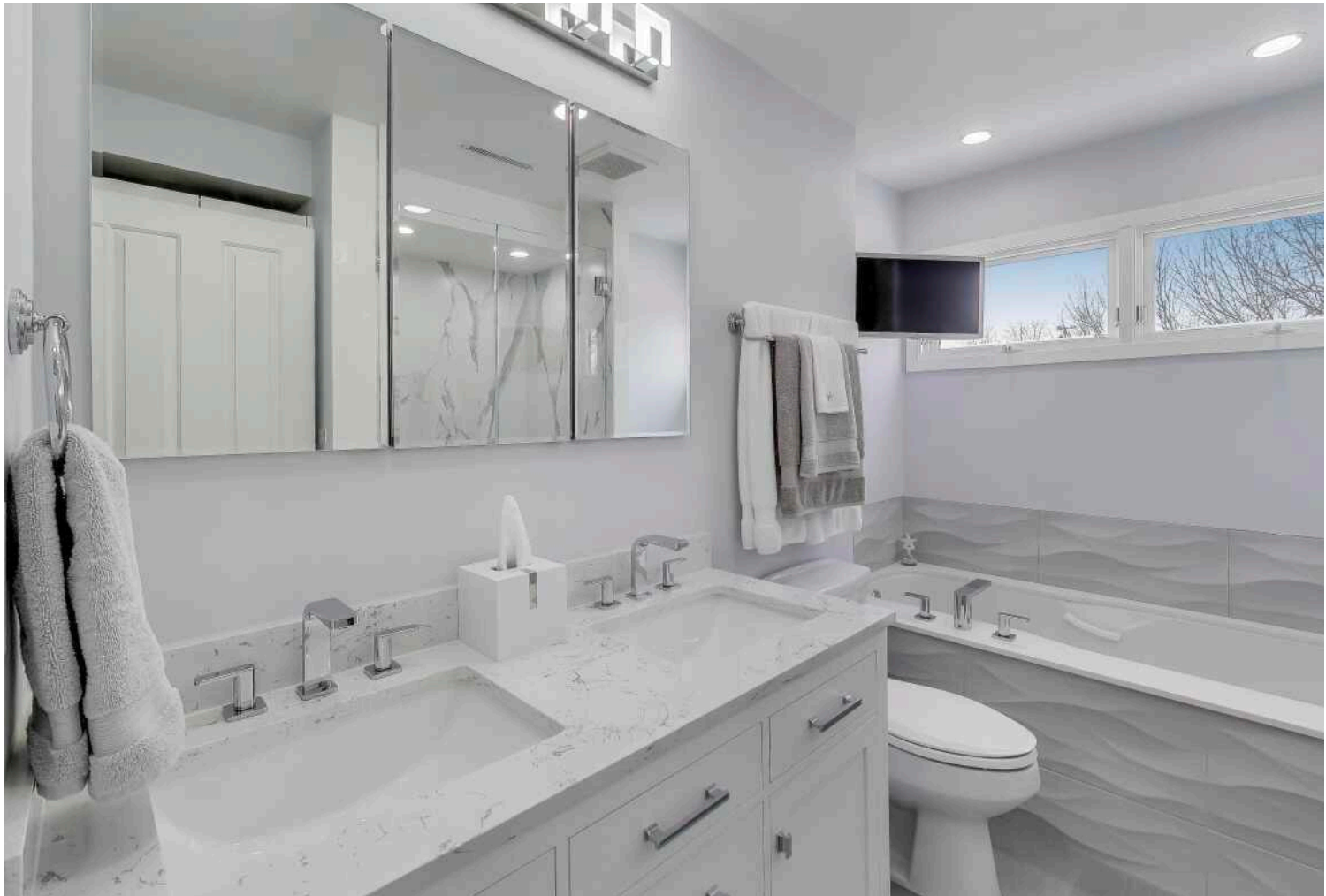
BREAKFAST/BAR



PRIMARY BEDROOM



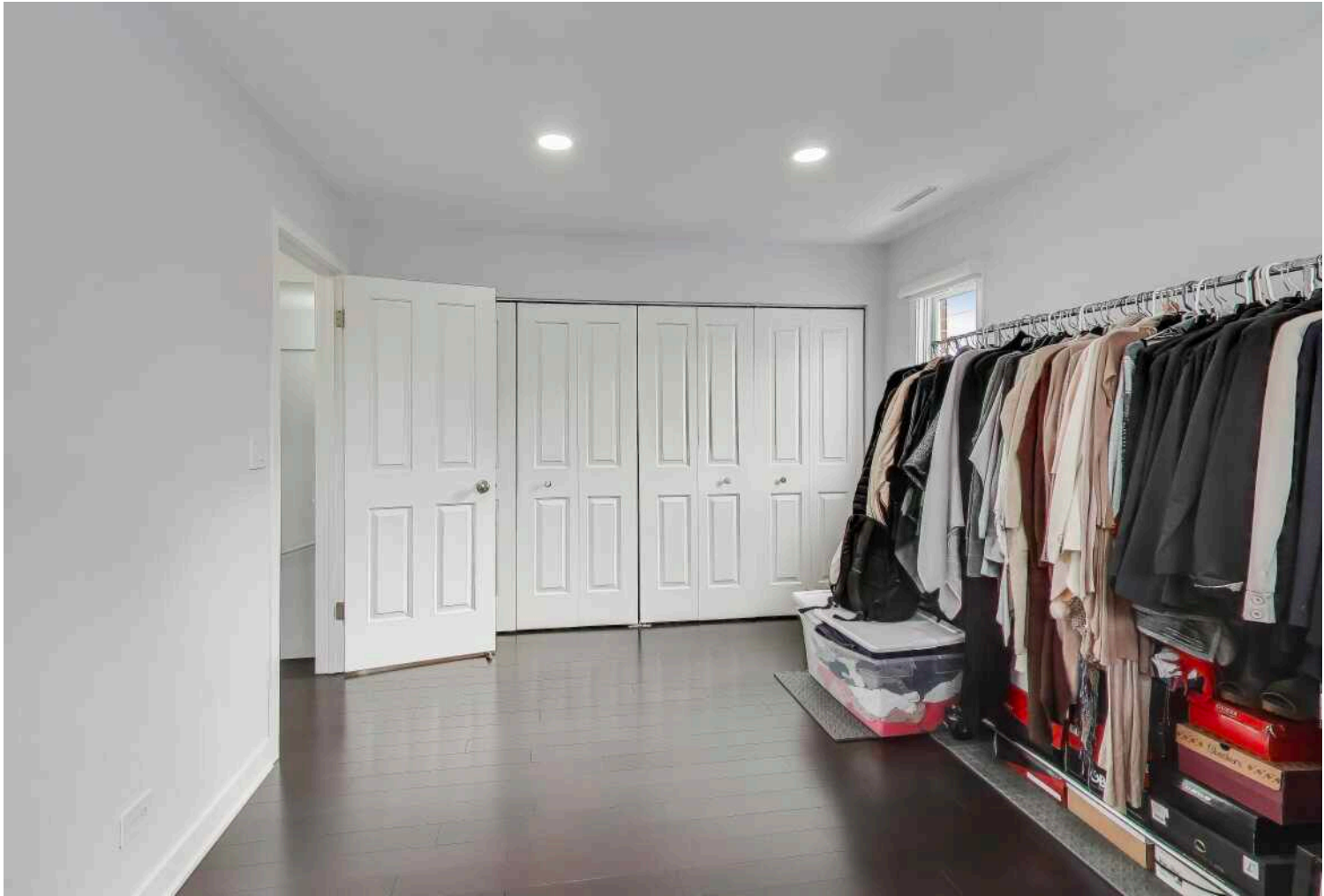


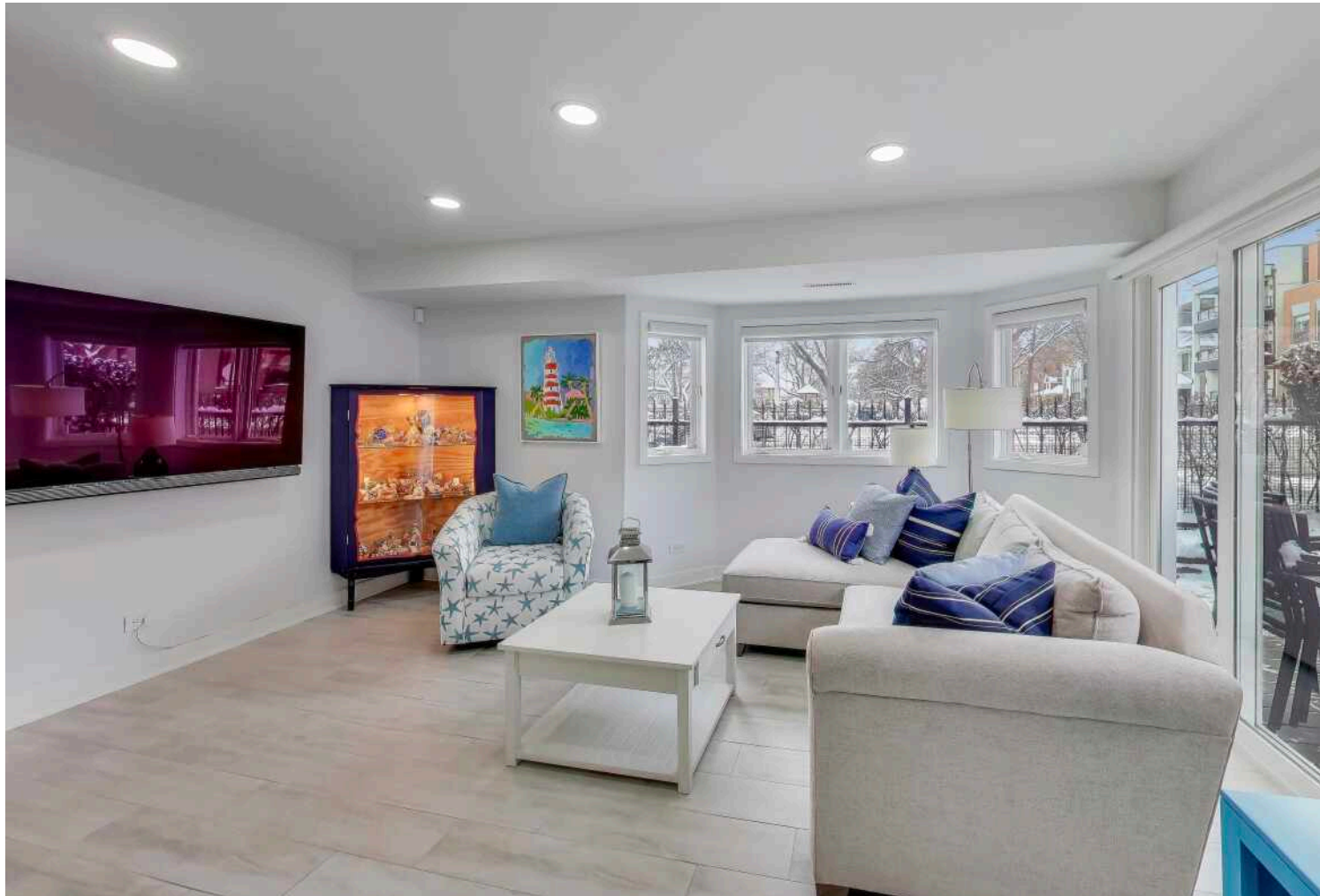


ENSUITE



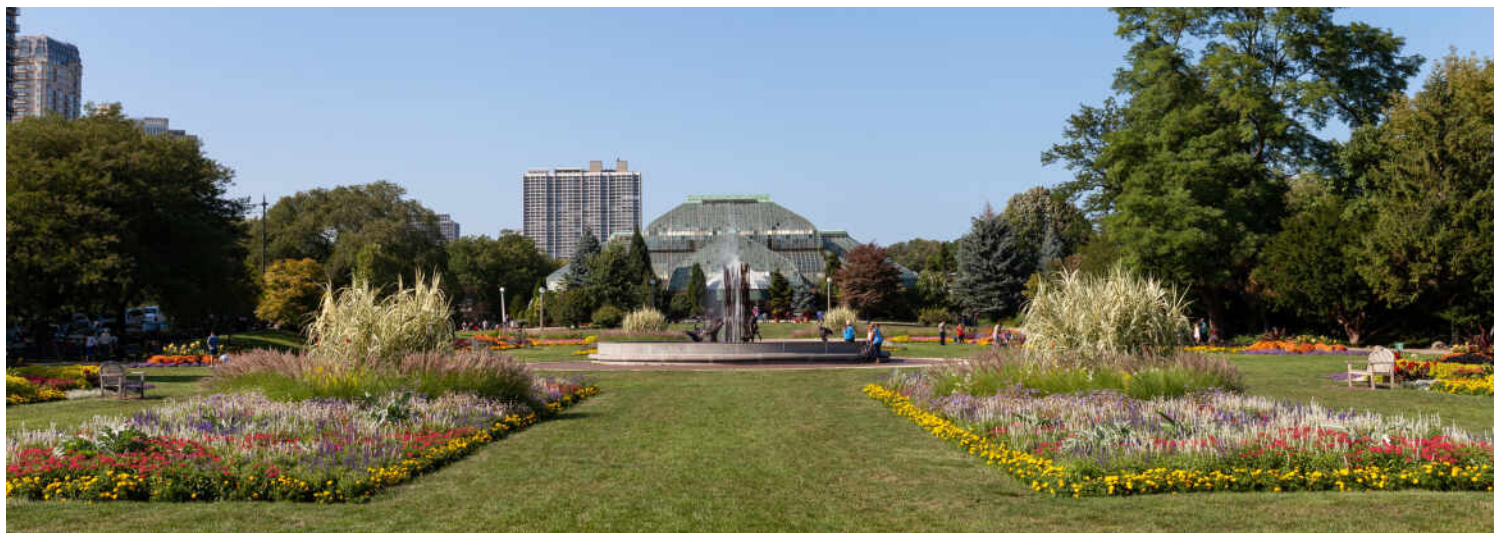
SITTING





SITTING





LINCOLN PARK RESIDENTS HAVE IT ALL – FROM THE ARTS TO ITS FAMED ZOO – RIGHT IN THEIR BACKYARD.

Locals love the many parks, shops, restaurants and tree-lined streets. The lakefront is another highlight where residents enjoy a variety of leisure activities at North Avenue Beach.

The neighborhood includes quiet tree-lined residential blocks, DePaul University, and two major museums in addition to the Lincoln Park Zoo, one of the country's oldest zoos. There's also a wide array of entertainment, eateries, and hotspots.

An evening in Lincoln Park might include seeing a play at the acclaimed Steppenwolf Theatre and dining at a Michelin-rated restaurant or a quaint neighborhood café. Sports fans will find as many dive bars with the game on as foodies will find fine-dining restaurants with al-fresco seating.

Lincoln Park is just as delightful by day. Residents are close to the lakefront and North Avenue Beach, parks, farmers markets, festivals, and countless shops, ranging from upscale boutiques on Armitage to larger retailers at the Clybourn Corridor.

Housing stock ranges from smaller townhomes and vintage condominiums to rehabs and new construction. Buyers around DePaul University can find loft condominiums in converted factories and warehouses. On its eastern edge, Lincoln Park features beautiful vintage brownstones along with high-rises with breathtaking views of the lake, park, North Pond Nature Sanctuary, and city skyline.

Located just two miles from downtown, Lincoln Park offers residents a quick commute to work. Public transportation abounds, with the CTA's Brown and Red lines serving the neighborhood in addition to several bus routes and Lake Shore Drive.



