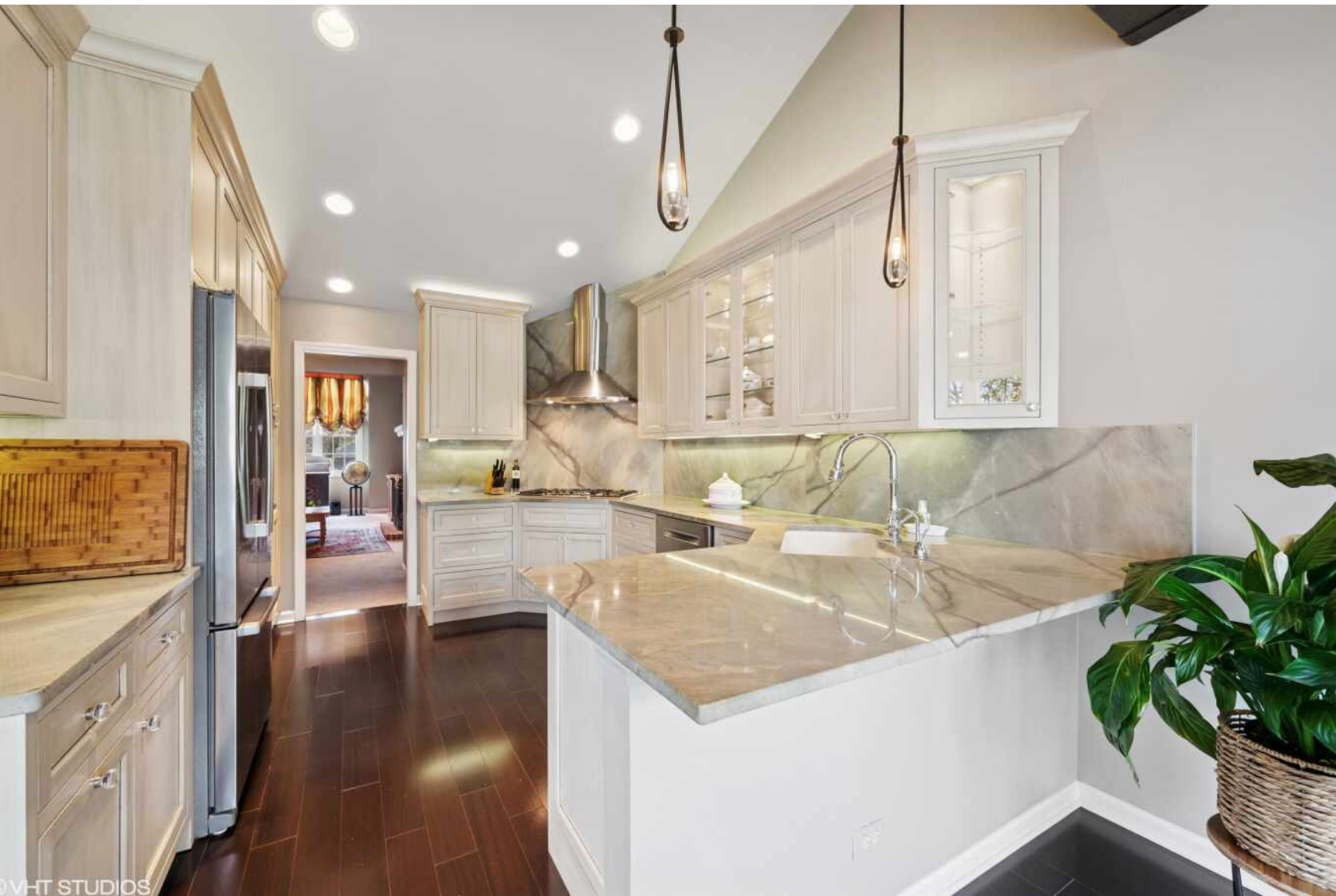


145 PRINCETON LANE

GLENVIEW





OVHT STUDIOS

2 BEDROOM
2.1 BATH

WELCOME TO PRINCETON VILLAGE

Experience comfort and convenience in this beautifully maintained ranch-style townhome, nestled within a gated community. Featuring 2 bedrooms + den, 2.1 baths, and an open layout with cathedral ceilings and abundant natural light, this home offers both space and style.

The updated kitchen boasts custom cabinetry, Bosch appliances, and ample storage, flowing seamlessly to a private patio with scenic views—perfect for outdoor dining or relaxation. The spacious family room is centered around a striking floor-to-ceiling stone gas-log fireplace with custom built-ins, creating a warm and inviting atmosphere.

A versatile den offers the perfect spot for a home office or can be easily converted into a third bedroom. Additional features include a side-by-side laundry room with utility sink and an attached two-car garage.

Enjoy all that Princeton Village has to offer, including a clubhouse and outdoor pool, enhancing the exceptional lifestyle this community provides.





© VHT STUDIOS

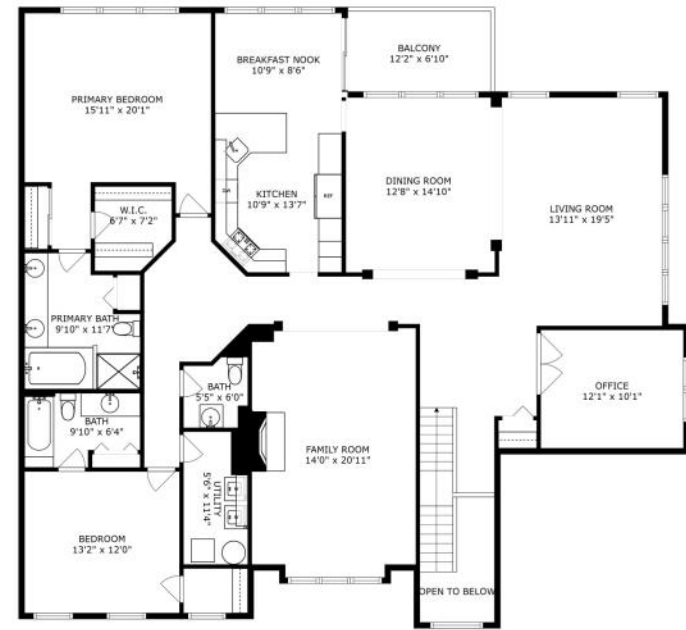


© VHT STUDIOS

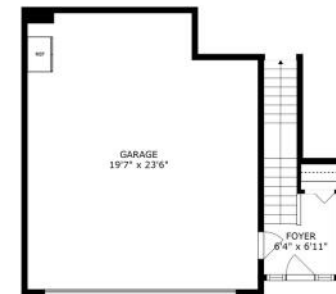




WHT STUDIOS

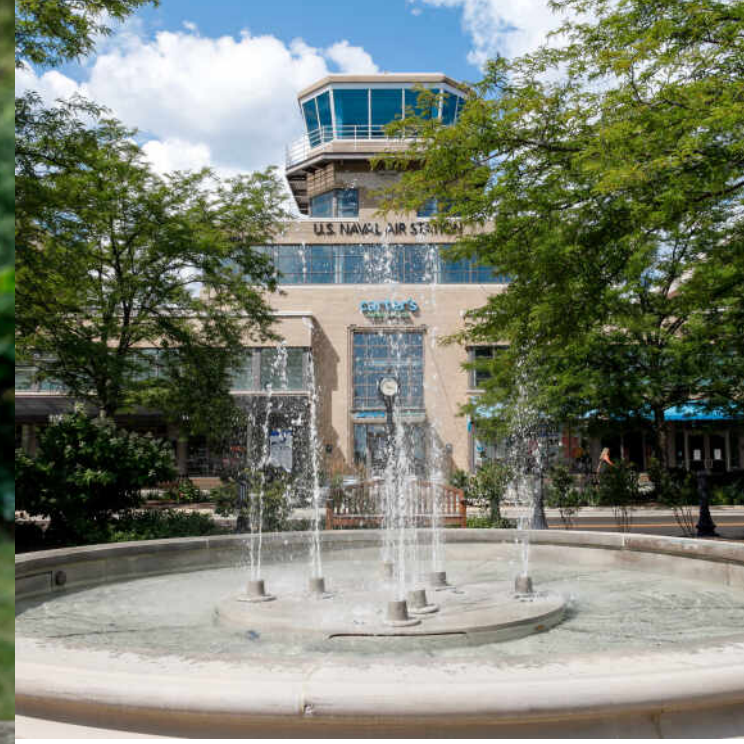


FLOOR 2



FLOOR 1

SIZES AND DIMENSIONS ARE APPROXIMATE, ACTUAL MAY VARY.



JUST 20 MILES FROM DOWNTOWN CHICAGO, **GLENVIEW** IS A DESTINATION IN ITS OWN RIGHT.

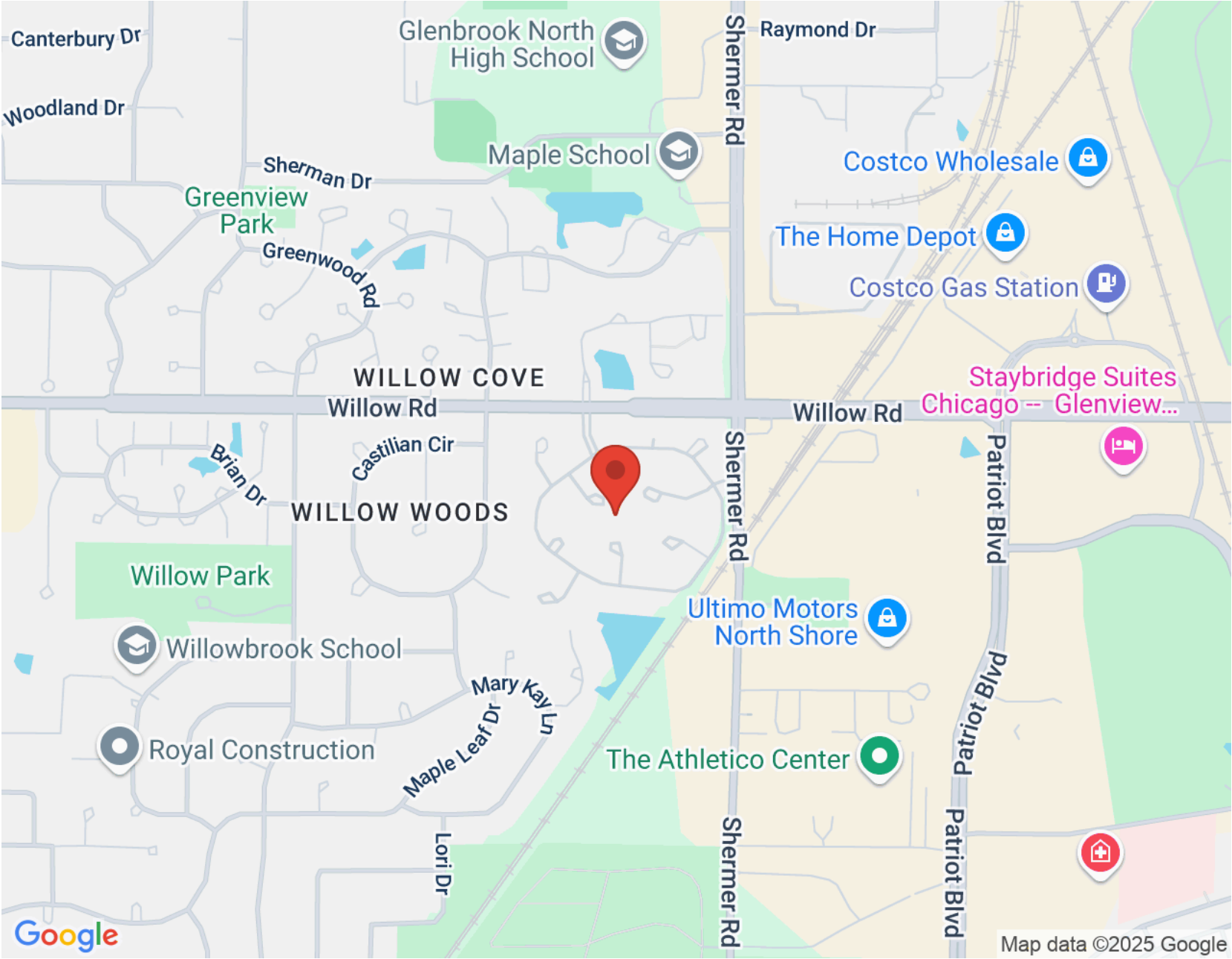
The scenic North Shore town has expanded rapidly thanks to its established neighborhoods, convenient access to transportation, and array of amenities.

More than 45,000 people call Glenview home, with properties ranging from townhomes and condominiums to luxury custom homes featuring the latest amenities. Newer homes can also be found at The Glen, a large development on the site of the former Glenview Naval Air Station that offers an assortment of shops and restaurants, a movie complex, the Kohl Children's Museum, and access to one of the town's two Metra stations.

Glenview is served by a number of public and private schools, including Glenbrook South High School, ranked among the top in the nation according to Business Insider.

The Glenview Park District offers indoor and outdoor pools, golf courses, soccer fields, nature trails, an ice center, tennis club, and multi-purpose community center.

In addition to modern development, Glenview celebrates and preserves its early days with two notable attractions: Wagner Farm and The Grove. A 20-acre working farm, Wagner Farm has hands-on programs - horseback riding, tractor driving, and other activities - that reflect a day in the life of a 1920s farmer. The Grove, a National Historic Landmark, includes a prairie, nature trails, historic buildings, and a log cabin that dates back to the 1850s.



NOTES _____



SELMA NEMETH | NEMETH GROUP

SENIOR BROKER

(847) 774-3636

SELMA@ATPROPERTIES.COM

WWW.SELMANEMETH.COM



JILL ESKO

(847) 710-7770

JILLESKO@ATPROPERTIES.COM