

**14 BIG OAK LANE**  
RIVERWOODS



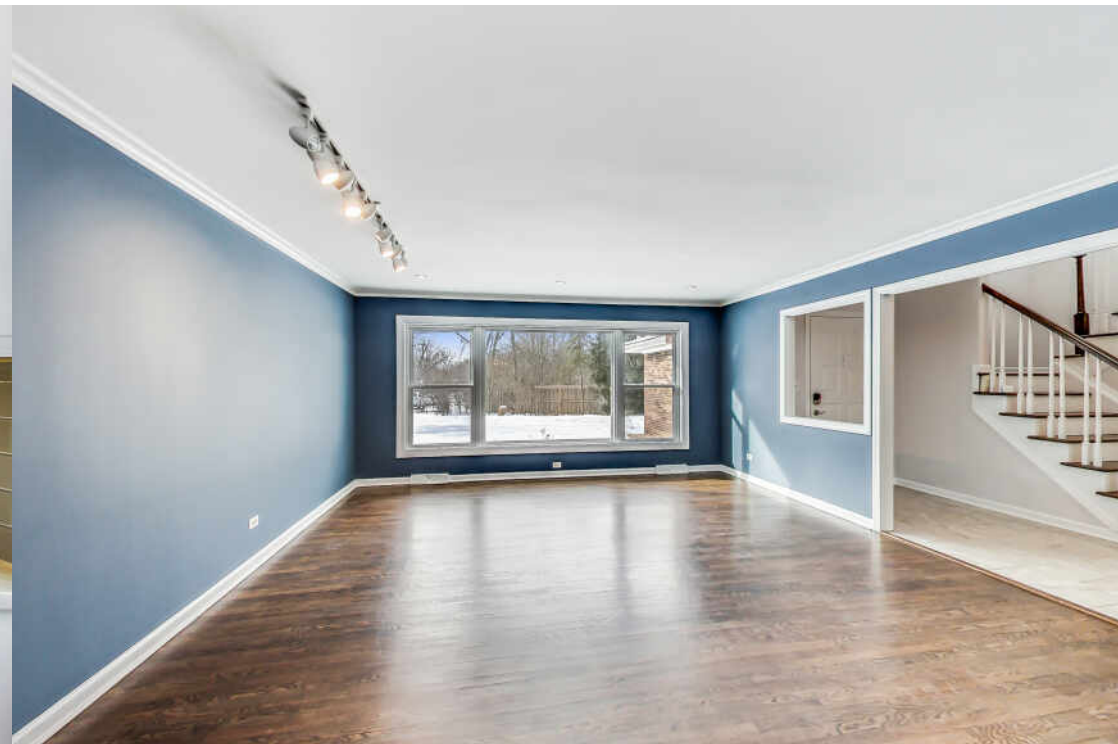
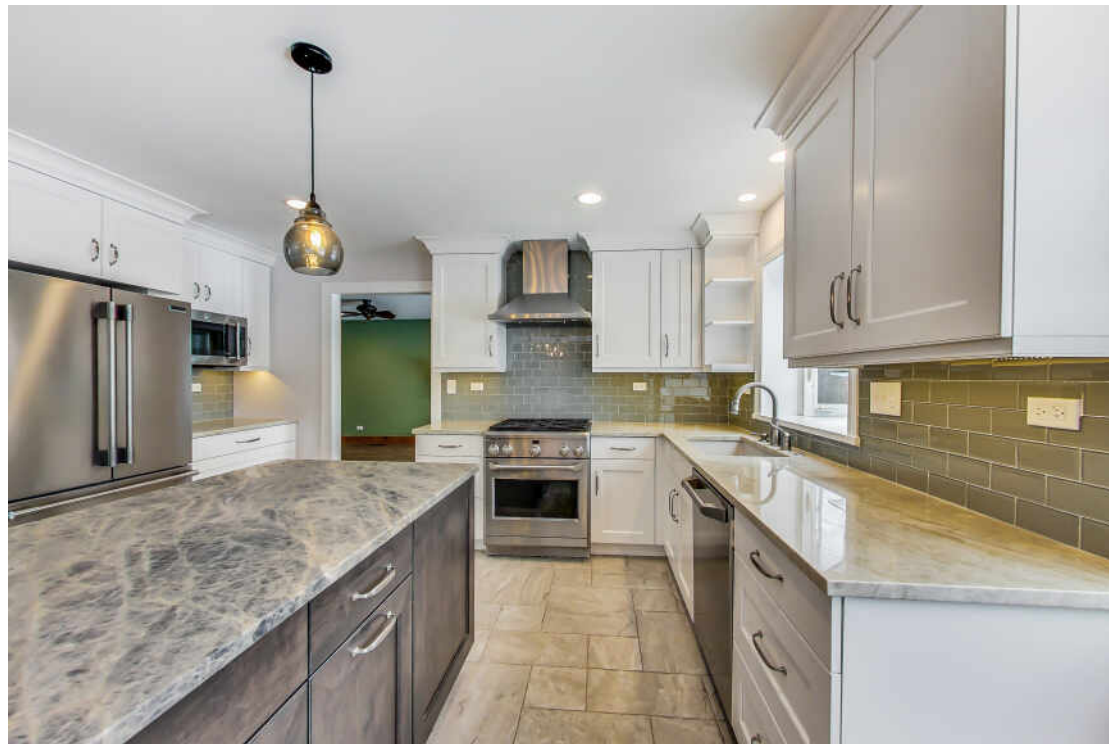


TAXES: \$12,973

## THIS HOME WILL IMPRESS THE MOST DISCERNING BUYER!!

- Tucked Away at the end of a Cul-De-Sac and Nestled on Almost an Acre, this Home has been Beautifully Updated and Ready To Move In!
- Gorgeous Updated White Gourmet Kitchen with Quartzite Counters, Dark Cabinets on the Center Island, Soft Close Drawers, and High End Steel Stainless Appliances (2017).
- Adjacent Dining Room with Built-in Butler Pantry/Cabinets and Beverage Refrigerator.
- Family Room Featuring Gas Fireplace and Large Living Room~Both with Gorgeous Dark Flooring!
- 2nd Floor Features Updated Primary Bath with Dual Vanity, Oversized Shower and Walk-In Closet (2020), Updated Hall Bath (2016) and 3 Additional Bedrooms~ALL with Hardwood Floors.
- Partially Finished Basement with Laundry Area and Tons of Storage!
- 2 Furnaces and AC (2012 and 2104).
- NEW Windows (2015 and 2017), NEW Fence (2018), and NEW Well Pump/Pipe/Wire (2015).
- Freshly Painted!
- 2 Car Heated Garage.
- This Home Received the Ecological Cost Share Program Award from the Village Honoring Stewardship Toward Improving the Health of the Woodlands!

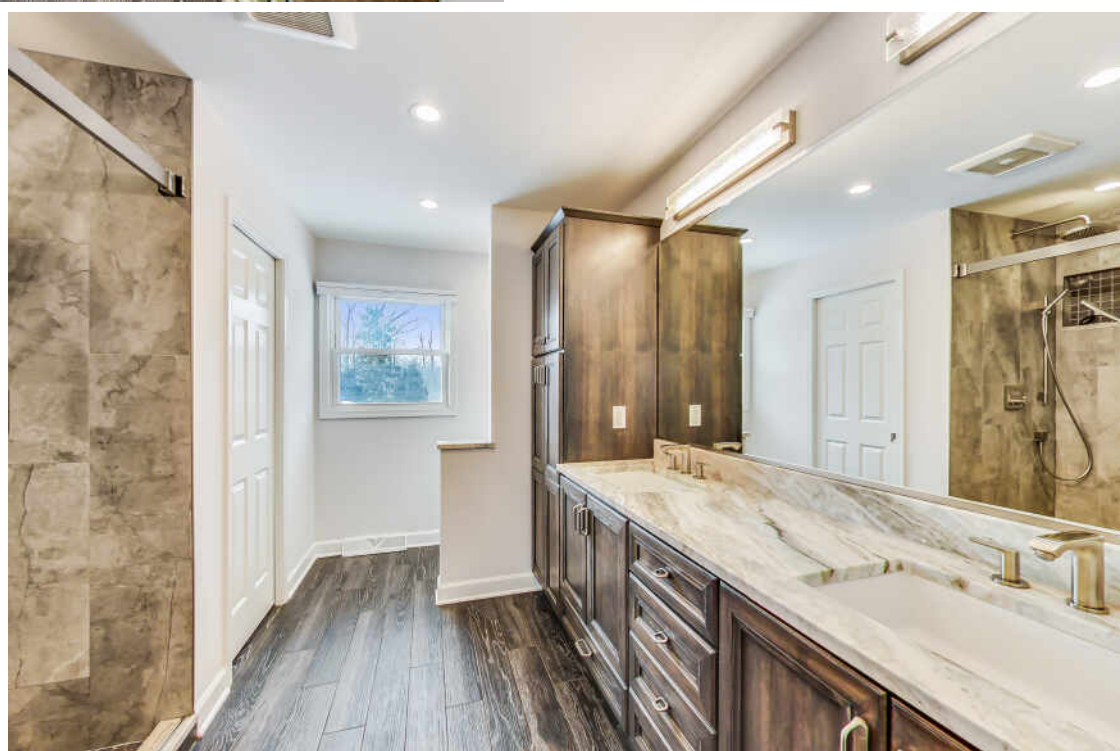




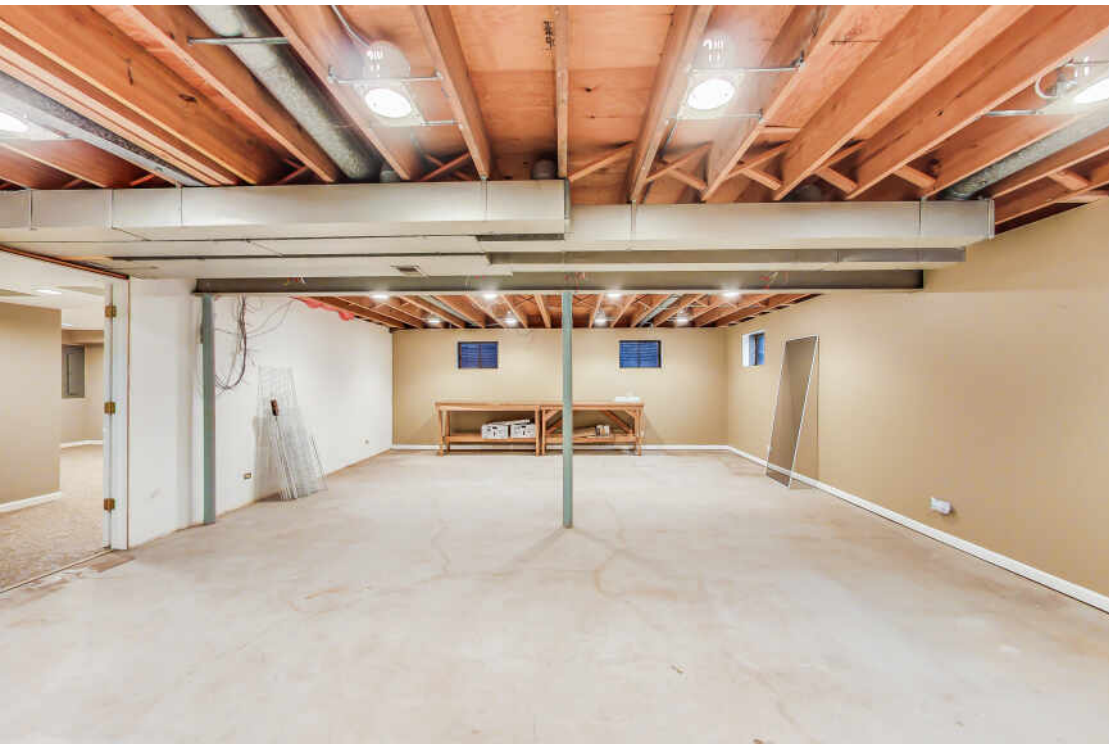
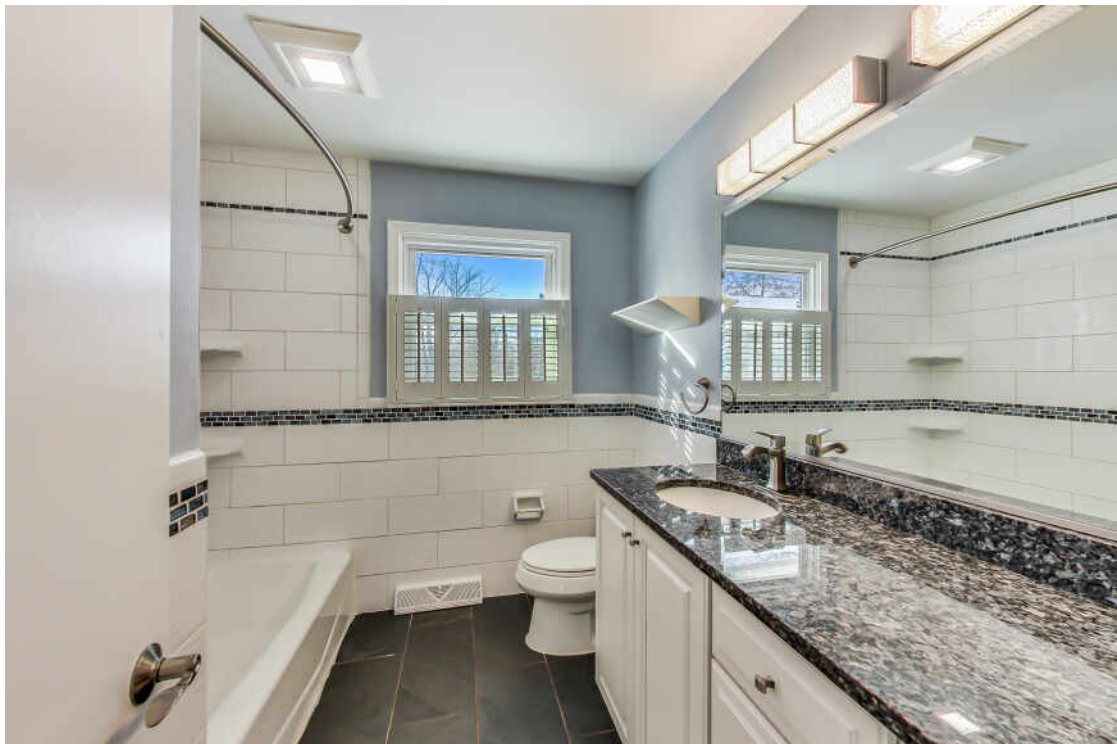
















## RIVERWOODS HAS BEEN A POPULAR RECREATIONAL AREA ALONG THE DES PLAINES RIVER SINCE THE 1920S.

Incorporated in 1959, the village remains committed to preserving the woodlands’ natural beauty for generations to come.

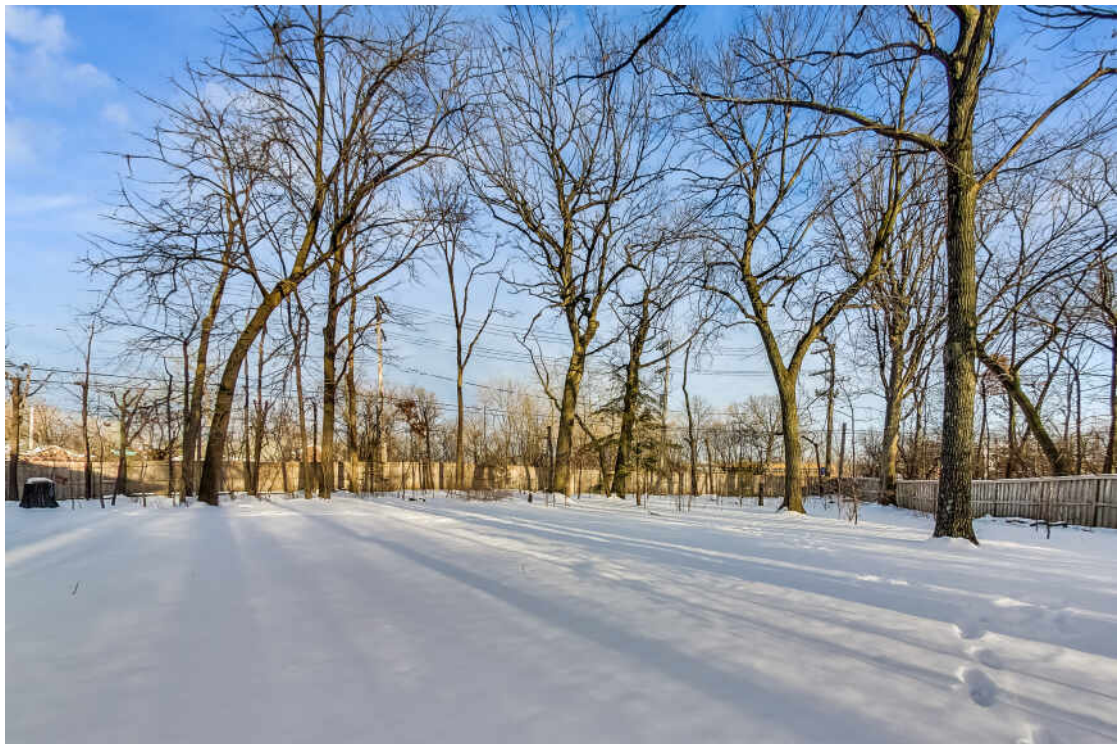
Steel magnate Edward L. Ryerson fell in love with the area in 1923, building a cabin for weekend getaways and later a country house. When an adjacent property went up for sale, he was concerned the land would be developed, destroying the area’s peaceful serenity. So he bought the property and started a farm.

Today, the area is open to the public to enjoy, thanks to Ryerson and neighbors who donated the land to the Lake County Forest Preserve. The preserve includes 6.5 miles of trails for hiking and cross-country skiing.

Homes in Riverwoods include a significant number of ranches and mid-century modern homes. More than 40 homes were designed by Edward Humrich, a notable “prairie modernist” architect.

The village is located at Deerfield Road between Route 21 and I-94, providing easy access to downtown Chicago and O’Hare International Airport. Nearby Deerfield provides Metra service to Chicago.





## NOTES

[illegible]





## JULIE PAWL

(847) 845-9348

JPAWL@ATPROPERTIES.COM

WWW.JULIEPAWL.COM

**JULIE PAWL**  
www.JuliePawl.com

@properties®

CHRISTIE'S  
INTERNATIONAL REAL ESTATE

14BIGOAK.INFO

All specifications, features, designs, price, assessments, taxes and materials are subject to change without notice. Depicted floor plans and architectural renderings are only an artist's impression.

