

14 TRYON FARM LANE
MICHIGAN CITY





ROOM DIMENSIONS

LIVING ROOM : 18.17' × 14.67'
FAMILY ROOM : 11.75' × 14.67'
DINING ROOM : 14.5' × 13.33'
KITCHEN : 8.92' × 11.25'
PRIMARY BEDROOM : 12.75' × 14.08'
SECOND BEDROOM : 12.75' × 14.08'

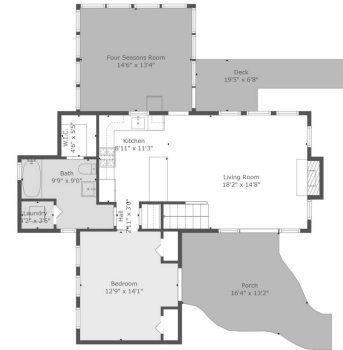
2 BEDROOM
2 BATH
TAXES: \$2,458
ASSESSMENTS: \$295 / MONTH

Don't miss this opportunity to live in the highly coveted and conservation-minded community of Tryon Farms. This 2 bed / 2 bath modern interpretation of a traditional farmhouse offers peace & tranquility with beautiful views across the farmstead settlement. Inside, the cathedral ceiling and tall windows provide lots of natural sunlight with plenty of space to spread out including an open concept kitchen/living area, a lofted space to work or read, a four-season sun room for dining in the meadow, and an outdoor roof deck. The kitchen boasts stainless steel GE appliances, quartz counter tops and a breakfast bar. The home features many recent upgrades and is being sold turnkey. If you want to embrace the outdoors, stroll along Tryon's many trails spread over 100 acres of shared and preserved woodlands, pasture, meadowlands and pond; or swim in the eco-friendly pool. (Separate membership required.) Located only 65 miles from Chicago's loop and a few miles to the beaches of Lake Michigan, this is the perfect getaway.

- 1,588 sq.ft.
- 2 Bedrooms
- 2 Bathrooms
- Living Room w/ Fireplace
- Four Season Sunroom / Dining Room
- Laundry
- Rooftop Deck
- Rear Deck
- Private Enclosed Courtyard
- Garage







TOTAL: 1071 sq. ft.
FLOOR 1: 702 sq. ft. FLOOR 2: 369 sq. ft.
EXCLUDED AREAS: FOUR SEASONS ROOM: 184' sq. ft., KITCHEN: 136' sq. ft., DECK: 96' sq. ft.,
FIREPLACE: 9' sq. ft., BALCONY: 116' sq. ft. OPEN TO BELOW: 282' sq. ft.,
LOW CEILING: 70' sq. ft.

Floor Plan Created By Custom App. Measurements Donated Rights Reserved But Not Guaranteed.



TOTAL: 1071 sq. ft.
FLOOR 1: 702 sq. ft. FLOOR 2: 369 sq. ft.
EXCLUDED AREAS: FOUR SEASONS ROOM: 184' sq. ft., KITCHEN: 136' sq. ft., DECK: 96' sq. ft.,
FIREPLACE: 9' sq. ft., BALCONY: 116' sq. ft. OPEN TO BELOW: 282' sq. ft.,
LOW CEILING: 70' sq. ft.

Floor Plan Created By Custom App. Measurements Donated Rights Reserved But Not Guaranteed.



TOTAL: 1071 sq. ft.
FLOOR 1: 702 sq. ft. FLOOR 2: 369 sq. ft.
EXCLUDED AREAS: FOUR SEASONS ROOM: 184' sq. ft., KITCHEN: 136' sq. ft., DECK: 96' sq. ft.,
FIREPLACE: 9' sq. ft., BALCONY: 116' sq. ft. OPEN TO BELOW: 282' sq. ft.,
LOW CEILING: 70' sq. ft.

Floor Plan Created By Custom App. Measurements Donated Rights Reserved But Not Guaranteed.



This image shows a blank sheet of white paper with horizontal ruling lines. The lines are evenly spaced and run across the width of the page. There are no margins, text, or other markings on the paper.



MICHAEL JEFVERT

(312) 316-9151

MJEFVERT@ATPROPERTIES.COM

111 FRANKLIN ST.

MICHIGAN CITY, IN, 46360



All specifications, features, designs, price, assessments, taxes and materials are subject to change without notice. Depicted floor plans and architectural renderings are only an artist's impression.

