

1515 N BOSWORTH AVENUE, RESIDENCE 2
WICKER PARK





BEAUTIFUL FINISHES & TIMELESS DESIGN

Ideally located on a quiet, tree-lined street, but just steps from vibrant Division Street/North Avenue, yet a quick train ride to the Loop.

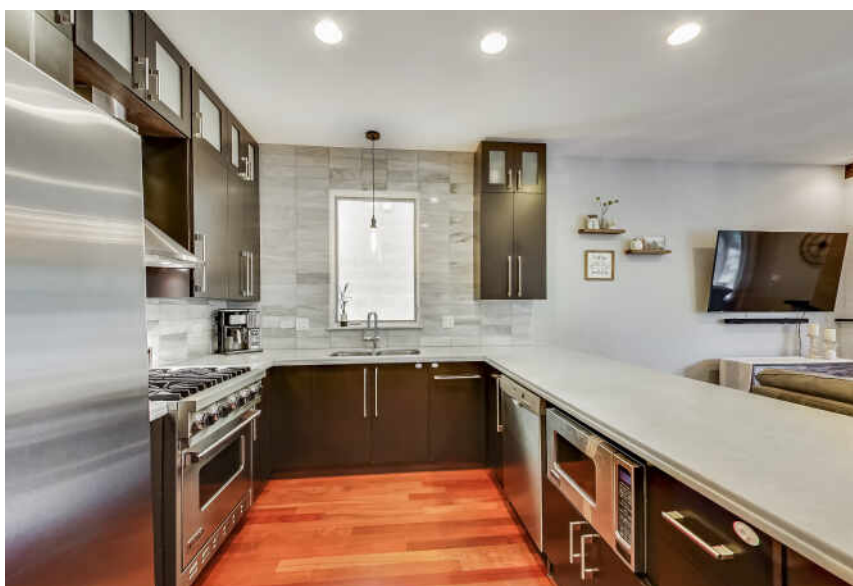
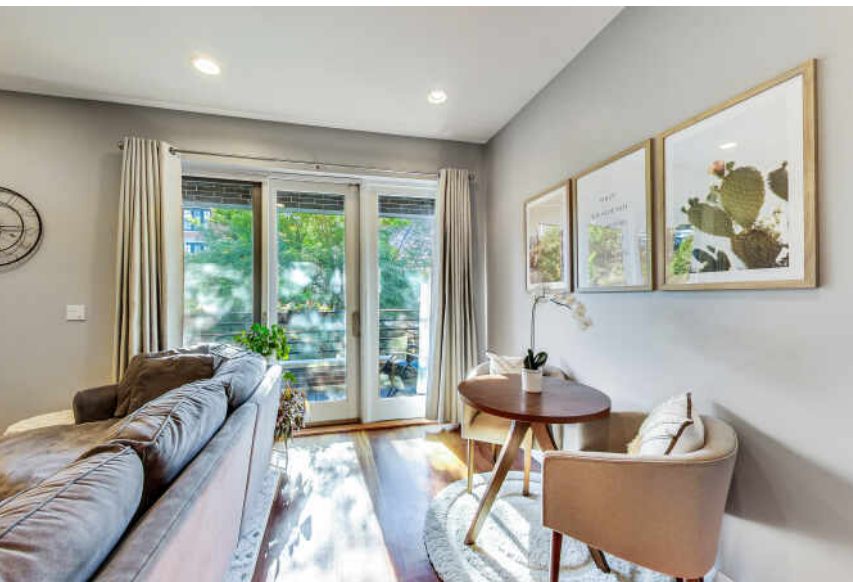
This bright and spacious 2 bedroom, 2 bath home is timeless in design and layout. An open kitchen and living room space that is perfect for entertaining. The kitchen features Viking & Bosch kitchen appliances, espresso walnut cabinets, Carrera slab backsplash, and granite countertops.

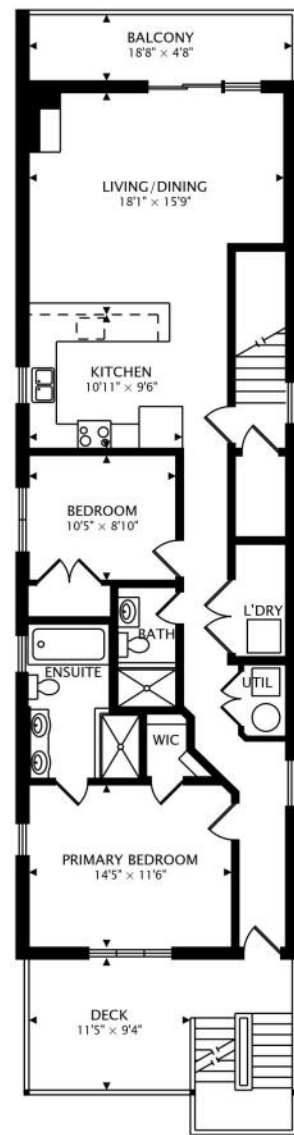
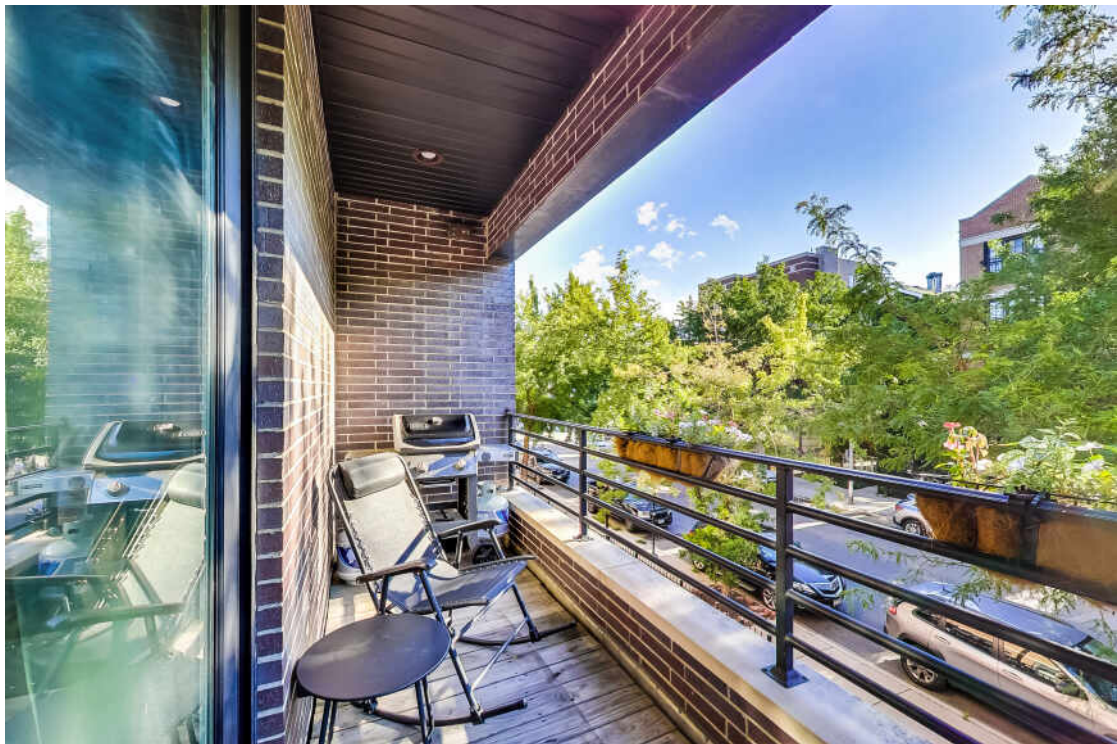
The spacious primary bedroom easily accommodates a king-size bed with ample closet space and a newly renovated primary bath featuring a spa-like shower with multiple body sprays as well as a separate soaking tub.

Hardwood flooring throughout, large storage closet for the in-unit washer & dryer, two separate outdoor spaces, and one garage parking spot included.

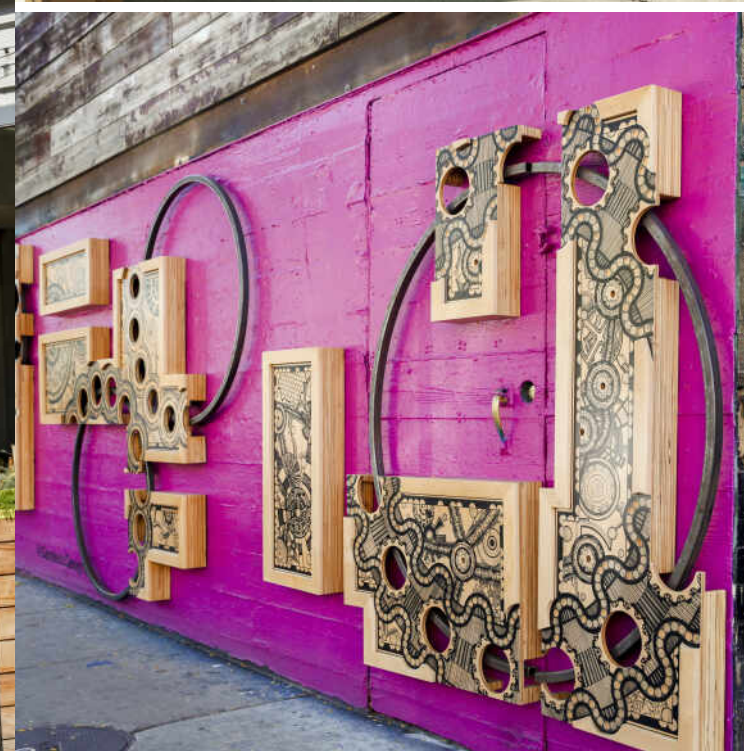
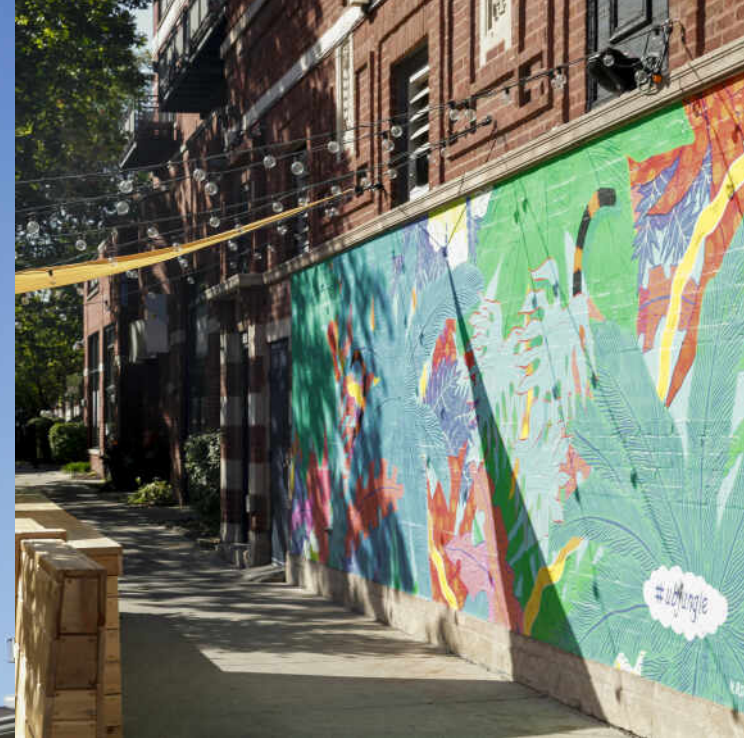
Enjoy numerous restaurants, bars, shopping, and so much more. Quick access to highway and CTA train/bus. 100% owner occupancy and well-run HOA that keeps up with projects.

Make this your next home!





1151 sq ft + 106 sq ft DECK + 88 sq ft BALCONY



RESIDENTS AND BUSINESSES FLOCKED TO **WICKER PARK** TO REBUILD AFTER THE GREAT CHICAGO FIRE OF 1871. TODAY, CHICAGOANS FLOCK TO THE HIP, HAPPENING NEIGHBORHOOD FOR ITS EATERIES, ARTS AND ENTERTAINMENT.

Wicker Park boasts an eclectic assortment of cafes, independent stores, dive bars, upscale boutiques, art galleries and city parks including four-acre Wicker Park. The neighborhood is home to some of Chicago's most popular and acclaimed restaurants, elevating pizza and tacos to foodie fare and offering a wide variety of options for drinking and dining pleasure.

Located just south of Bucktown and northwest of The Loop, the neighborhood includes large historic 19th century brick and stone mansions and landmark Victorian homes on tree-lined streets. Modern new construction condominiums and single-family homes along with vintage walk-ups, three-flats and lofts round out the diversity of housing available.

Like neighboring Bucktown, Wicker Park's notable commercial architecture remains - re-imagined, redeveloped and restored. The iconic Flat Iron Arts Building, home to artists who moved to the neighborhood in the 1980s, still houses various art studios and local businesses today.

The CTA Blue Line offers convenient access to The Loop and O'Hare International Airport, while the Kennedy Expressway allows for an easy drive to surrounding neighborhoods and suburbs.



NOTES _____



PAM LYNCH

(312) 371-7084

PLYNCH@ATPROPERTIES.COM

WWW.PAMLYNCHRESIDENTIAL.COM



CHRISTIE'S
INTERNATIONAL REAL ESTATE

1515BOSWORTH2.INFO