

1517 NATHAN LANE
CONCORD AT INTERLAKEN - LIBERTYVILLE





ROOM DIMENSIONS

LIVING ROOM : 12' × 16'
DINING ROOM : 14' × 12'
FAMILY ROOM : 22' × 18'
OFFICE : 12' × 14'
KITCHEN : 15' × 15'
BREAKFAST NOOK : 9' × 13'
PRIMARY BEDROOM : 18' × 14'
SECOND BEDROOM : 13' × 12'
THIRD BEDROOM : 12' × 12'
FOURTH BEDROOM : 12' × 12'

ELEGANT HOME WITH IDEAL LOCATION

Welcome to this stunning home featuring elegant hardwood floors throughout, creating a seamless and sophisticated look on both levels. From the moment you step into the grand 2-story foyer, bathed in natural light and showcasing an open staircase, you'll be captivated by the thoughtful design and timeless style. The formal living and dining rooms offer the perfect setting for entertaining, while the gorgeous kitchen is a chef's dream with granite countertops, classic white cabinetry, coordinating backsplash, and a convenient planning desk and recently updated refrigerator and microwave. The sunny breakfast nook flows effortlessly into the oversized family room, complete with a cozy fireplace, creating the perfect space for everyday living. A large private first-floor office is ideal for remote work or study, while the mud/laundry room with sink and a powder room complete the main level for added convenience. Upstairs, the inviting master suite offers a peaceful retreat with double walk-in closets, and a ensuite bathroom featuring a soaking tub, double vanities, a separate walk-in shower, and a private toilet room. Three additional generously sized bedrooms share a well-appointed hall bathroom with double sinks and a separate bath/toilet area-perfect for busy mornings. The full unfinished basement is already plumbed for a bathroom, offering endless potential to finish the space to suit your needs. Enjoy outdoor living in the fully fenced yard (partial replacement in 2024), which provides privacy and includes a beautiful paver walkway and patio ideal for gatherings or relaxing evenings. Additional updates include a new roof (2022) and siding (2015), providing peace of mind for years to come. The home is ideally located in a desirable neighborhood directly across the street from neighborhood park with playground and scenic walking paths, offering both recreation and a sense of community.

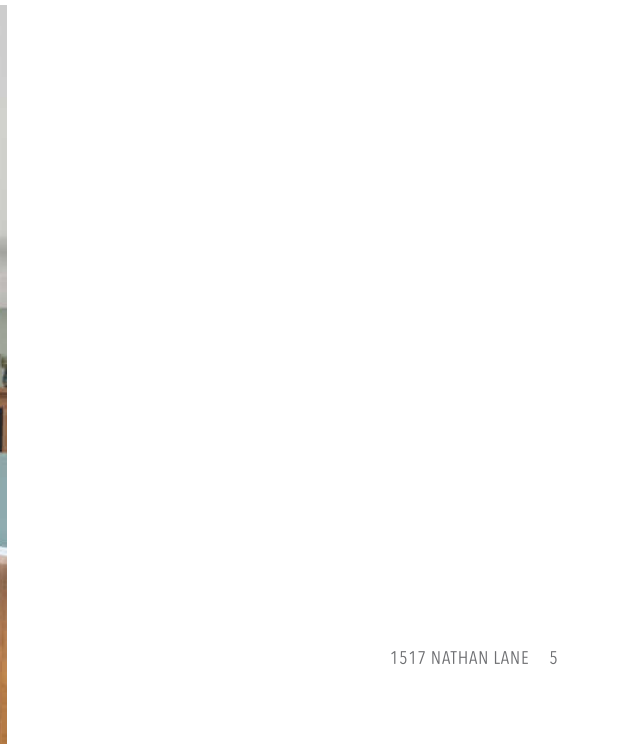
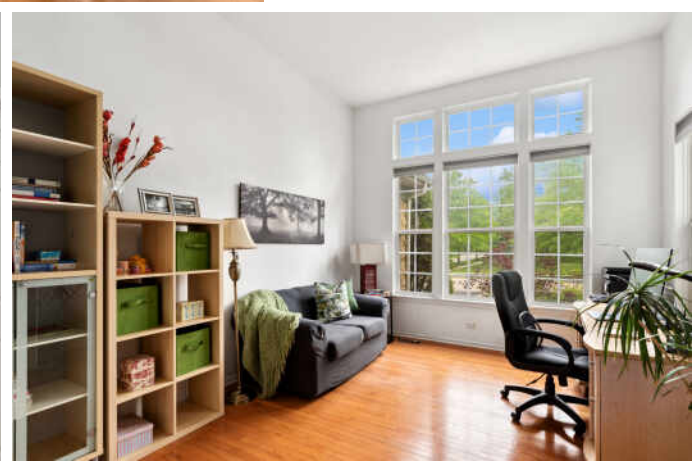
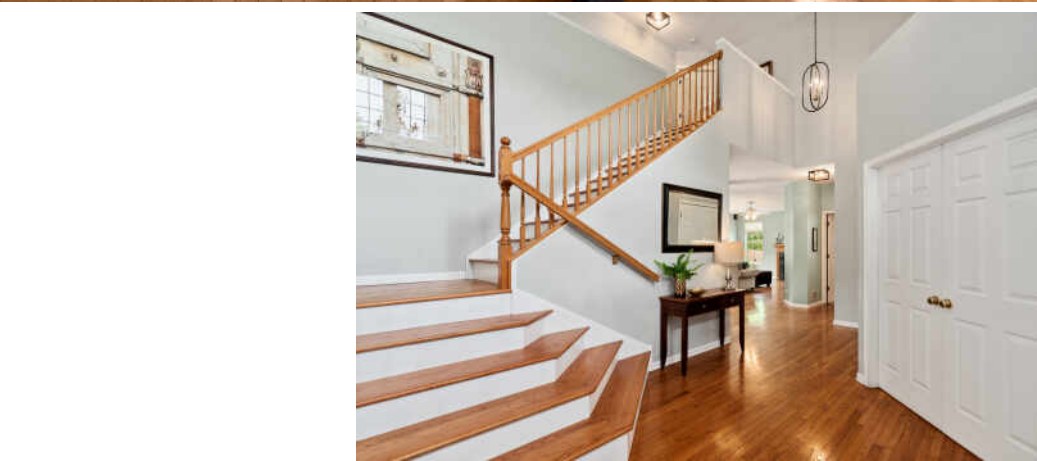
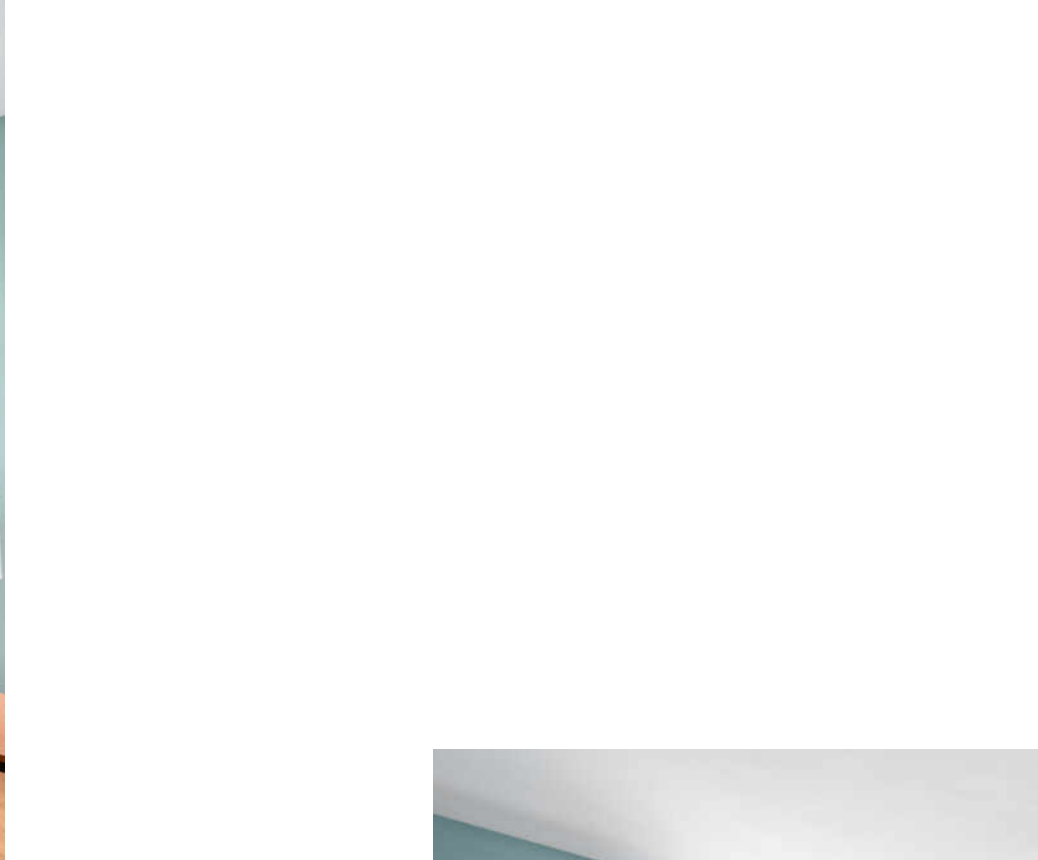


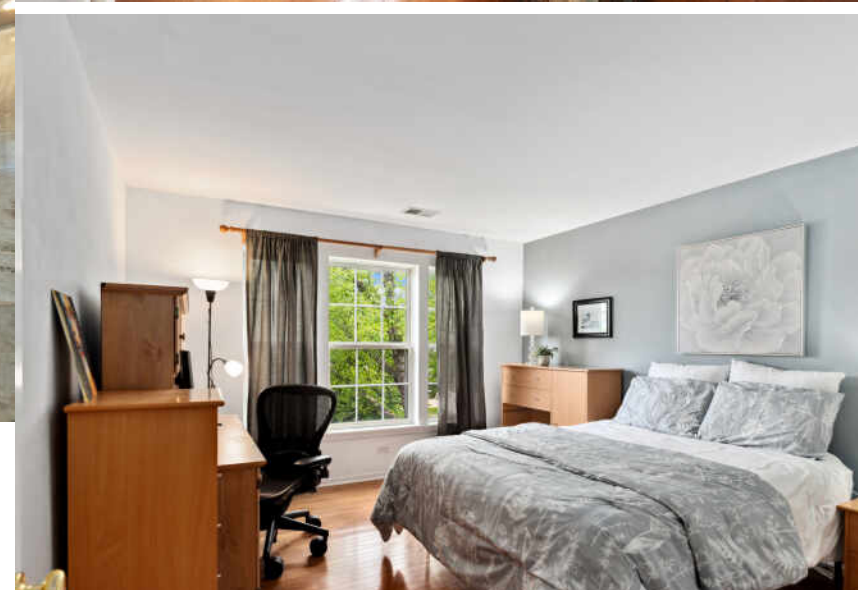
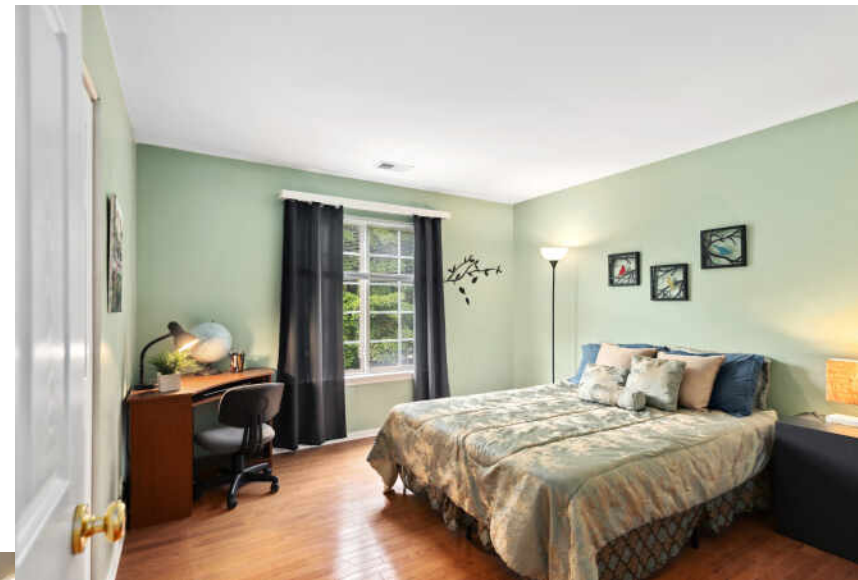
4 BEDROOM

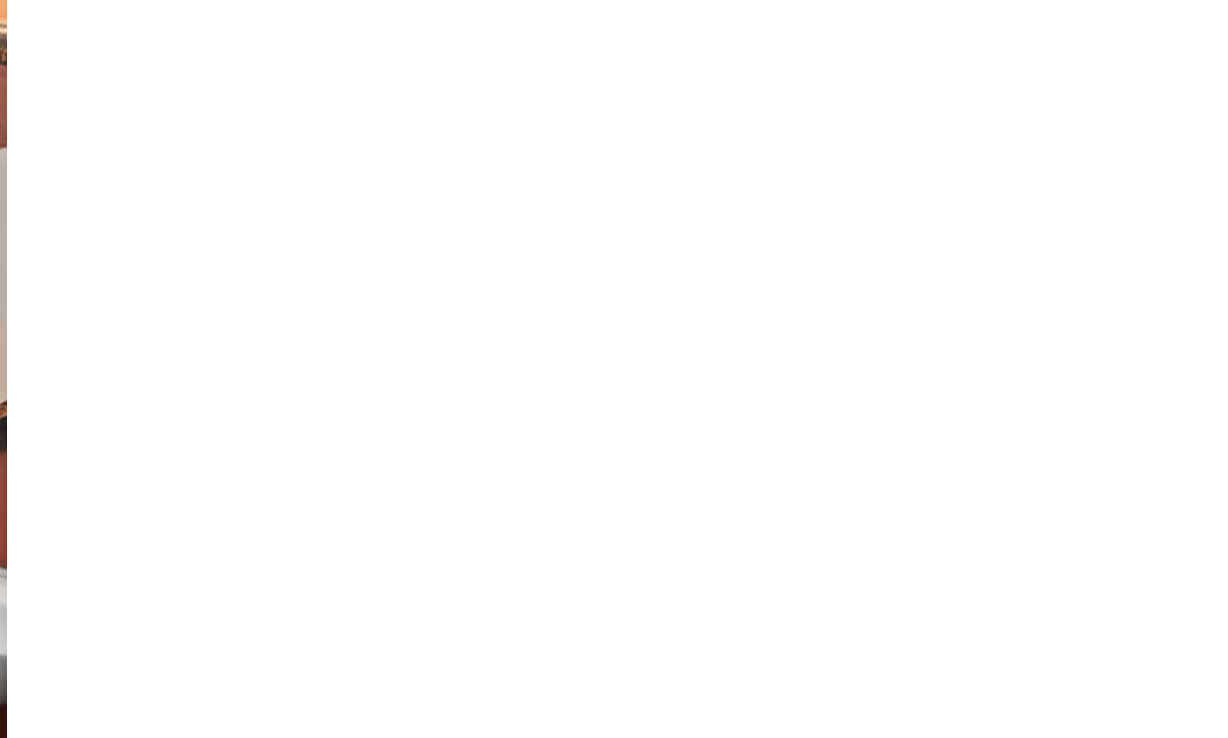
2.1 BATH

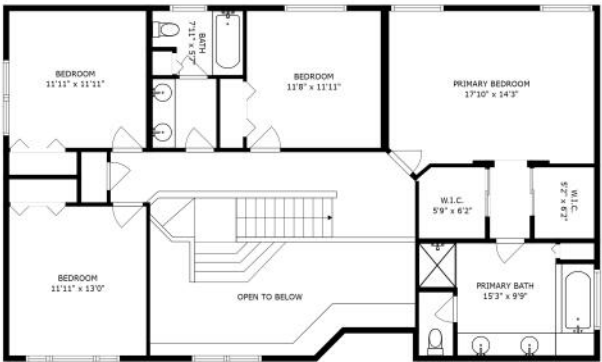
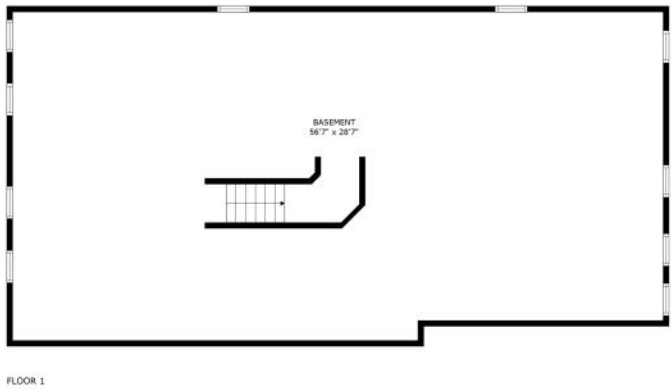
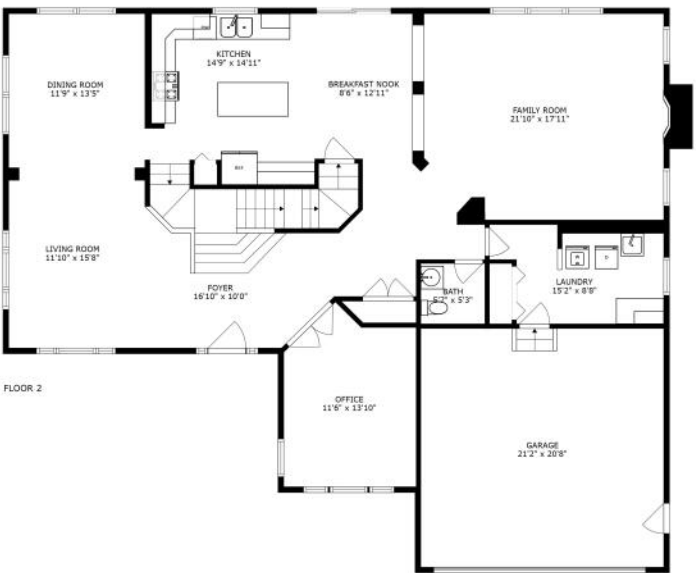
TAXES: \$16,776

ASSESSMENTS: \$0









SIZES AND DIMENSIONS ARE APPROXIMATE, ACTUAL MAY VARY.



LIBERTYVILLE OWES MUCH OF ITS EARLY GROWTH TO THE RAILROAD.

A spur on the Milwaukee Road train line brought rapid growth to the area, which was incorporated in 1882.

Today the Metra rail system provides a convenient commute for residents of this vibrant community.

Libertyville's bustling downtown district received a Great American Main Street Award by the National Trust for Historic Preservation. The downtown was rebuilt after a fire in 1895 destroyed most of the buildings; they were rebuilt with mandated brick reconstruction, giving them a singular style.

The downtown area includes bakeries, gourmet coffee vendors, and a microbrewery. In spring and summer months, residents enjoy a farmers market that has been operating for more than three decades.

In addition to a variety of restaurants, there are upscale boutiques, antique shops, and gift stores along Milwaukee Avenue.

Residents have eight miles of bike paths and numerous parks to enjoy along with the annual Libertyville Days Festival, an outdoor concert series, and other community events.

Three Metra stations and the Tri-State Tollway make for a convenient commute to downtown Chicago, O'Hare International Airport, and suburban corporate headquarters.



NOTES _____



KRYSTYNA FRITZ

(847) 894-1381

KFRITZ@ATPROPERTIES.COM

WWW.KRYSTYNAFRITZ.COM



All specifications, features, designs, price, assessments, taxes and materials are subject to change without notice. Depicted floor plans and architectural renderings are only an artist's impression.

