

**151 EGAN DRIVE**  
STREAMWOOD

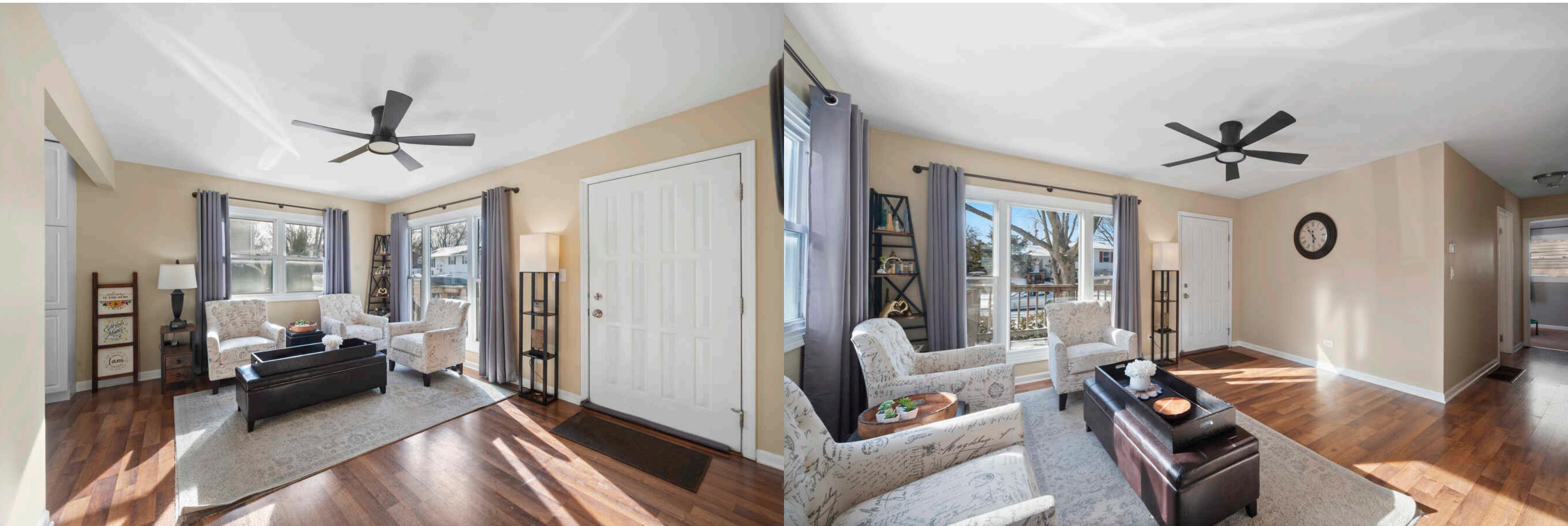




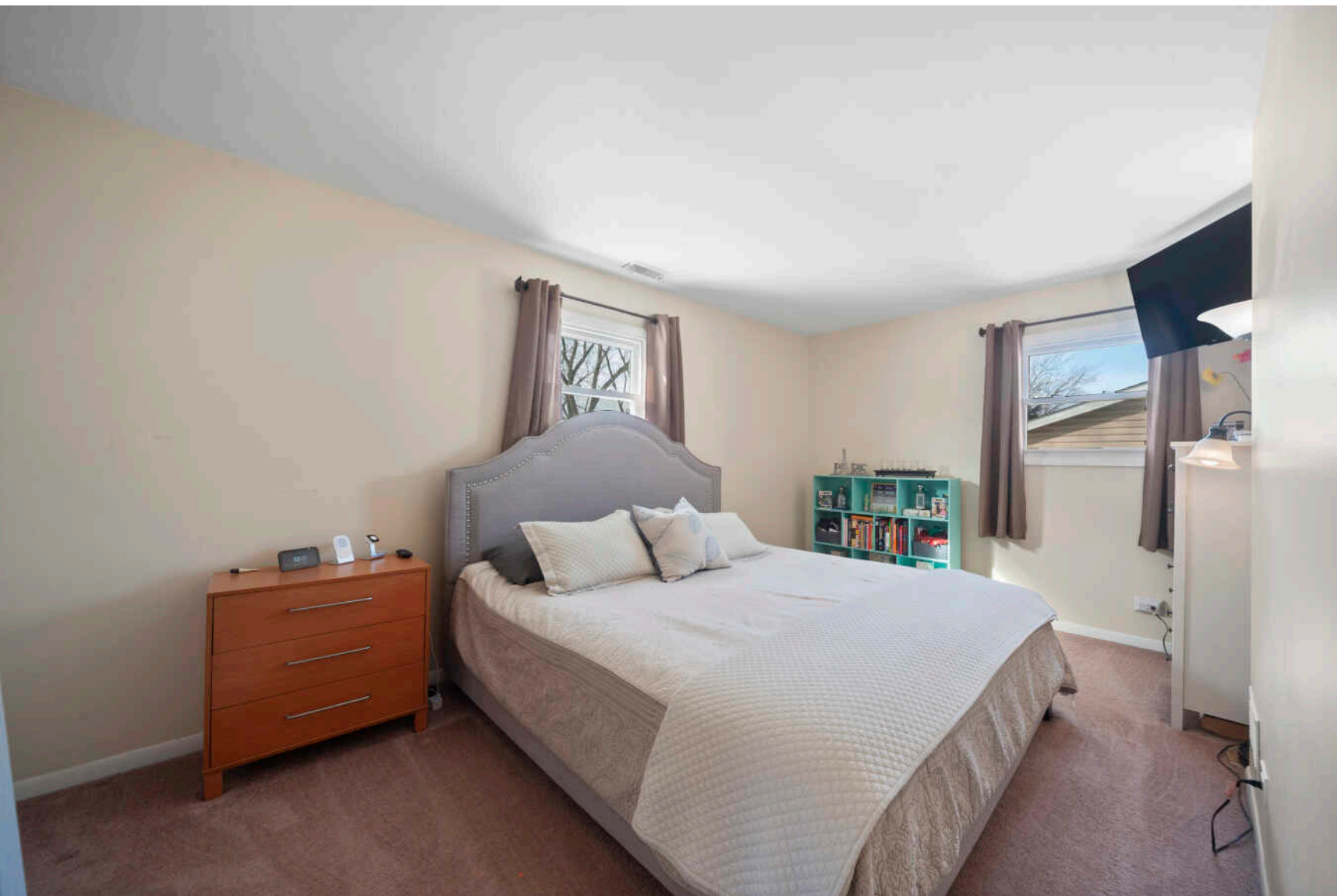
6 BEDROOM  
2 BATH  
TAXES: \$6,987

Spacious and versatile 6-bedroom home with an additional den and a full unfinished basement, offering exceptional flexibility for today's living and investment strategies. The functional layout features four generously sized bedrooms on the second level and two bedrooms plus a den on the main level, with full bathrooms on both levels for everyday convenience. The home is move-in ready, thoughtfully cared for, and filled with abundant natural light throughout, creating a bright, warm, and inviting atmosphere. The open living areas feature neutral finishes, updated lighting and ceiling fans, and attractive wood-look flooring, creating a comfortable and welcoming space for everyday living and entertaining. The kitchen offers white cabinetry, stainless steel appliances, ample storage, and a sliding glass door that brings in natural light and provides easy access to the backyard. Ideally located in a quiet residential neighborhood within walking distance to a neighborhood park, this home offers easy access to I-90, providing convenient connectivity throughout the Northwest suburbs, downtown Chicago, and O'Hare International Airport. Nearby shopping, dining, schools, and everyday amenities further enhance daily convenience while maintaining a peaceful community setting. The large backyard is perfect for outdoor entertaining, gardening, and gatherings, complemented by a detached two-car garage and mature landscaping. Solar panels are installed and offering long-term energy efficiency benefits for the next owner. An excellent opportunity for a primary residence, multi-generational living, or long-term investment. Bright, charming, well-presented, and offering strong upside in a convenient Streamwood location.





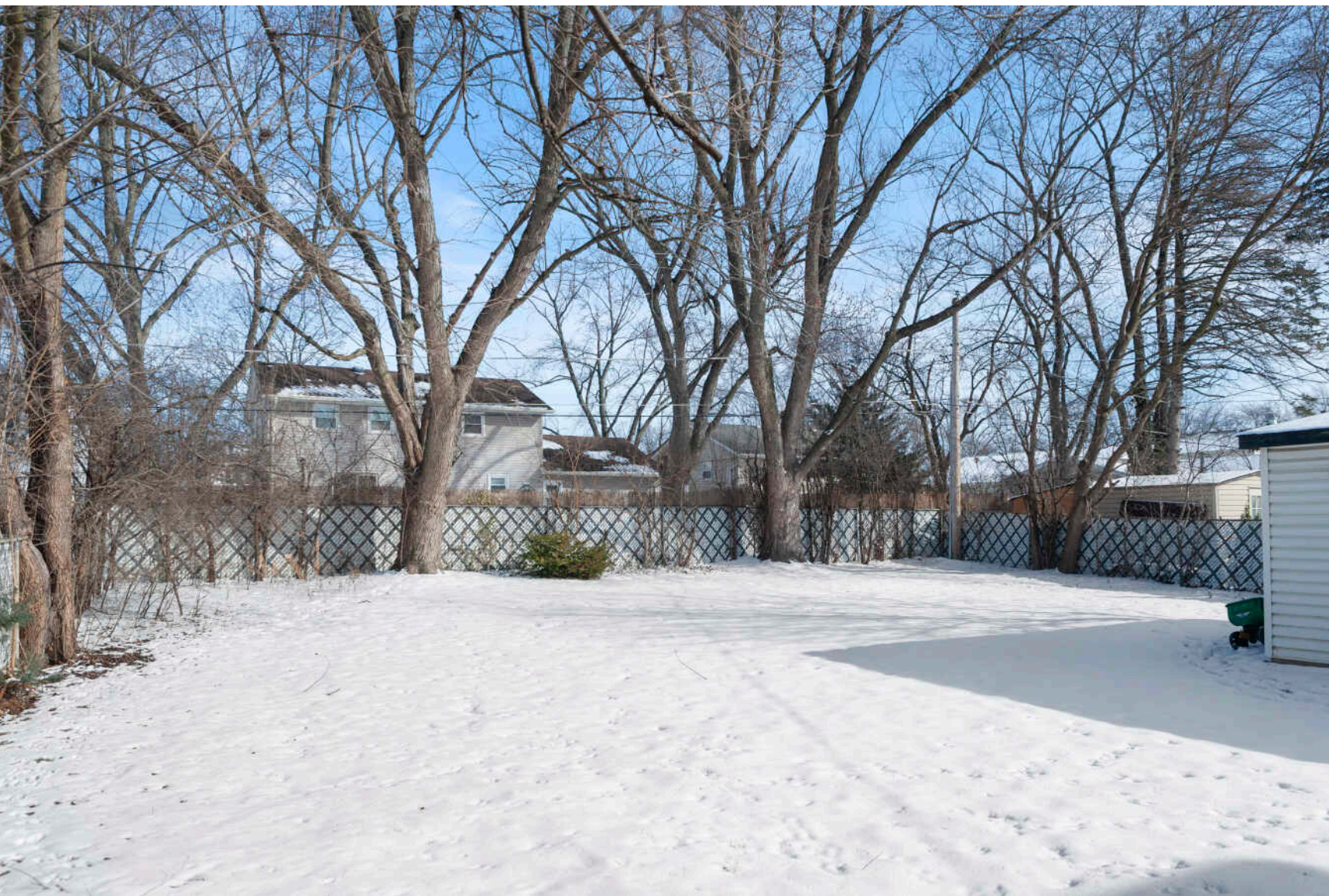












NOTES \_\_\_\_\_

[illegible]



## STELLA TALAGA

(630) 297-3564

STELLAT@ATPROPERTIES.COM

STELLATALAGA.COM



All specifications, features, designs, price, assessments, taxes and materials are subject to change without notice. Depicted floor plans and architectural renderings are only an artist's impression.

