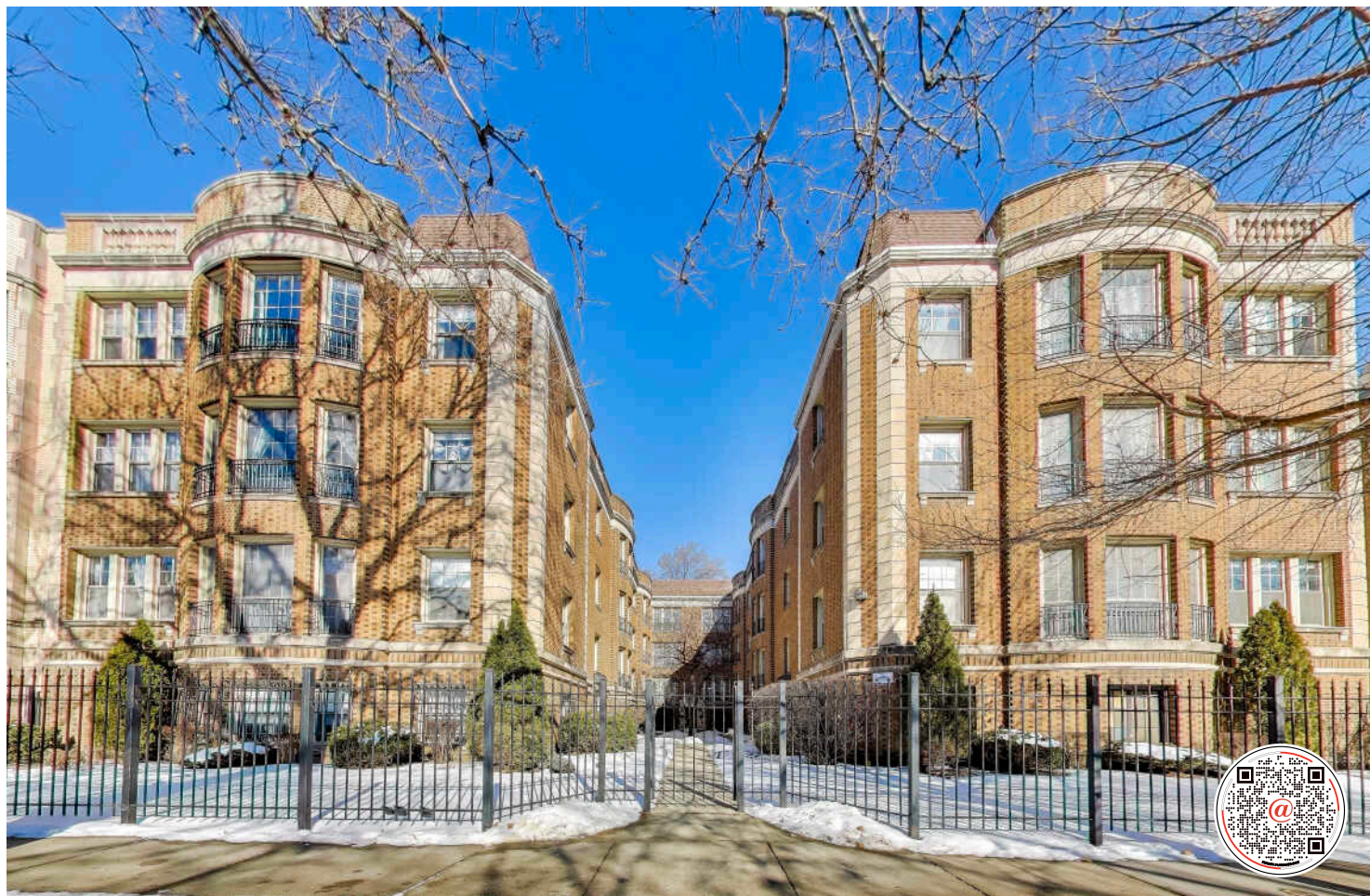


1524 W FARGO AVENUE #3N
ROGERS PARK

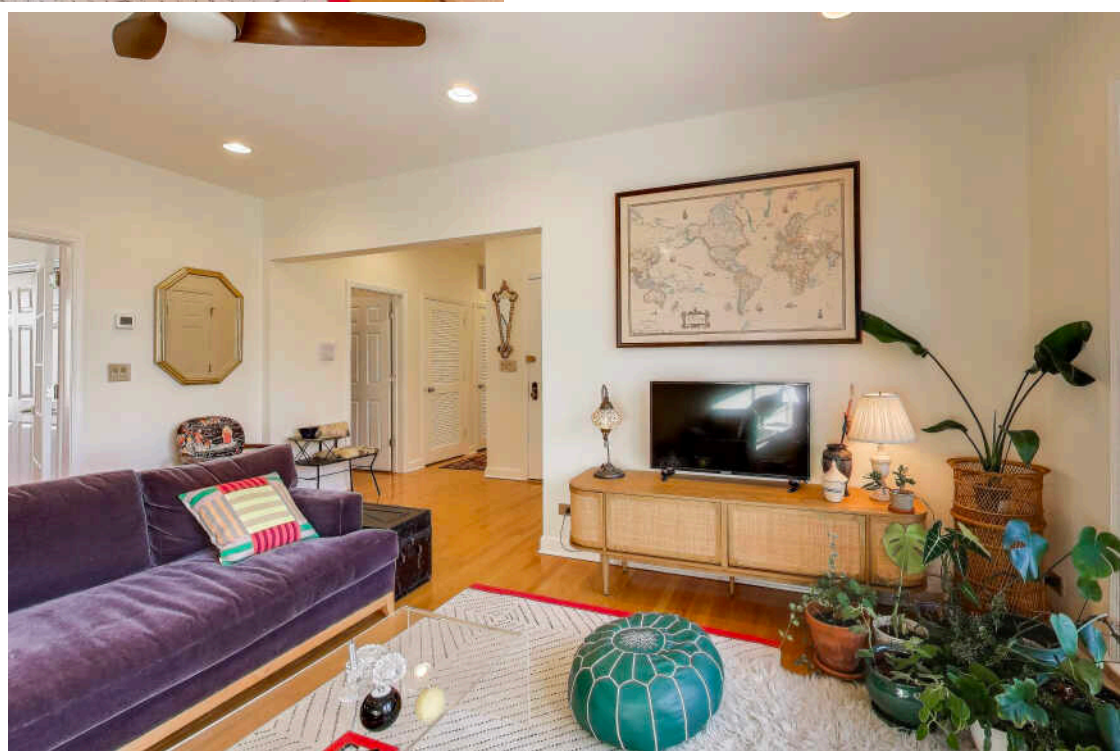


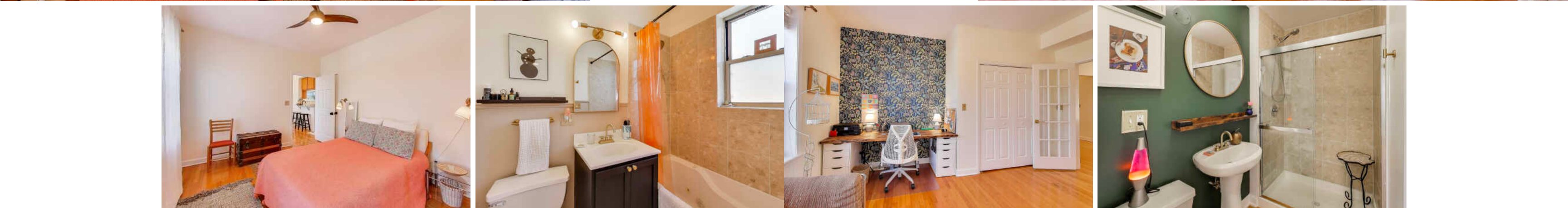


2 BEDROOM
2 BATH
TAXES: \$3,787.27
ASSESSMENTS: \$313.58

TOP FLOOR CONDO FLOODED WITH LIGHT

- Building gut rehabbed in 2003
- Updated kitchen & bathrooms
- Central air & in-unit laundry
- Great room sizes & plenty of closet space
- South facing, floor-to-ceiling windows in the living room
- Bedrooms & dining room have an open view to the north
- Primary bedroom has walk-in-closet & en suite bath
- Second bedroom has French doors to living room
- Kitchen has a breakfast bar & is open to the dining room
- Cherry cabinets, granite counters & stainless steel appliances
- Storage room in the basement
- Two blocks from the Jarvis El & Fargo beach







ROGERS PARK IS A WORLDLY COMMUNITY THAT HAS A VIBE ALL ITS OWN.

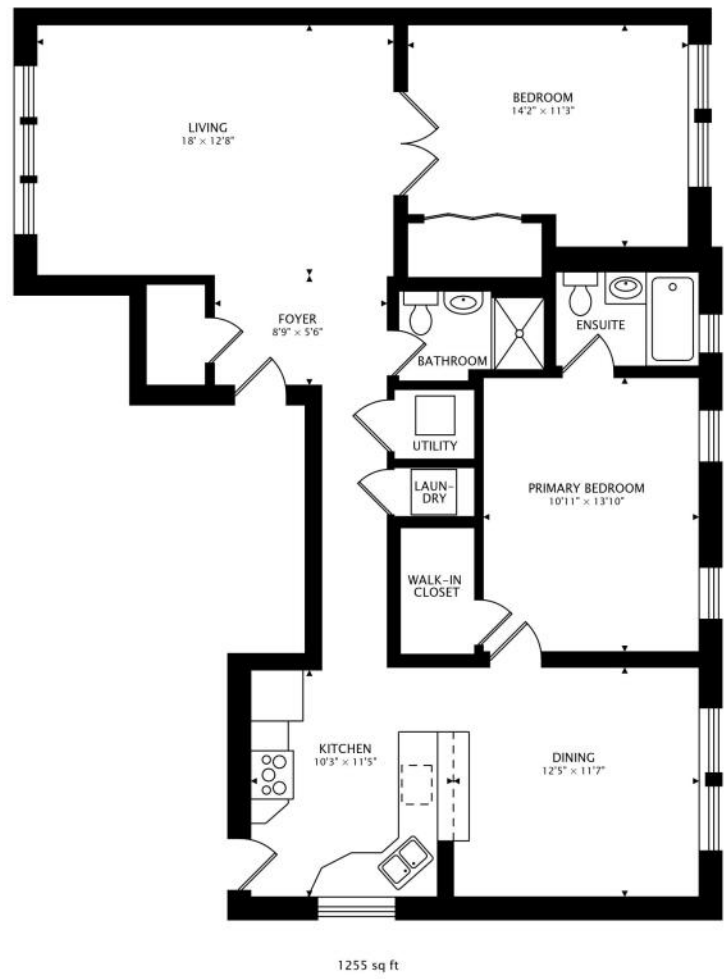
The neighborhood features legendary restaurants and shops that highlight a variety of cultures, along with popular dive bars, coffee shops, scenic beaches and more than 30 parks.

Residents love the street-end beaches, which are more accessible and less busy than downtown beaches. While Helen Doria Beach, also known as Columbia Beach, is great for its view of downtown, Loyola Beach is a popular spot for fishing, picnics and other recreational activities.

Rogers Park is known for celebrating community and creativity. This is evident in Miles of Murals - a community-based initiative featuring 14,000 square feet of commissioned art. The project began in 2007 and includes block-long pieces, viaducts and overpasses. Every year, neighbors come together to paint Loyola Beach's 600-foot lakefront mural at the Artists of the Wall Festival.

The community consists of east and west sections and includes smaller pocket neighborhoods. Loyola University of Chicago and the lakefront are focal points on the east, while West Rogers Park includes larger single-family homes and a number of city parks.

Homebuyers can find a variety of housing styles including vintage walkups, new construction and block after block of classic Chicago bungalows. Downtown Chicago is easily accessible via Lake Shore Drive and public transportation including the CTA's Red Line and Metra's Union Pacific North Line.



NOTES



CHRIS GAGGERO

(773) 715-1479

CHRISGAGGERO@ATPROPERTIES.COM

WWW.CHRISGAGGERO.COM