

**1526 OXFORD CIRCLE**  
CHESAPEAKE FARMS - GRAYSLAKE





#### ROOM DIMENSIONS

LIVING ROOM : 12' × 11'

DINING ROOM : 12' × 13'

FAMILY ROOM : 14' × 14'

KITCHEN : 14' × 11'

PRIMARY BEDROOM : 14' × 14'

SECOND BEDROOM : 13' × 10'

THIRD BEDROOM : 10' × 12'

REC ROOM : 36' × 17'

TREX DECK : 20' × 18'

**3 BEDROOM**

**2.2 BATH**

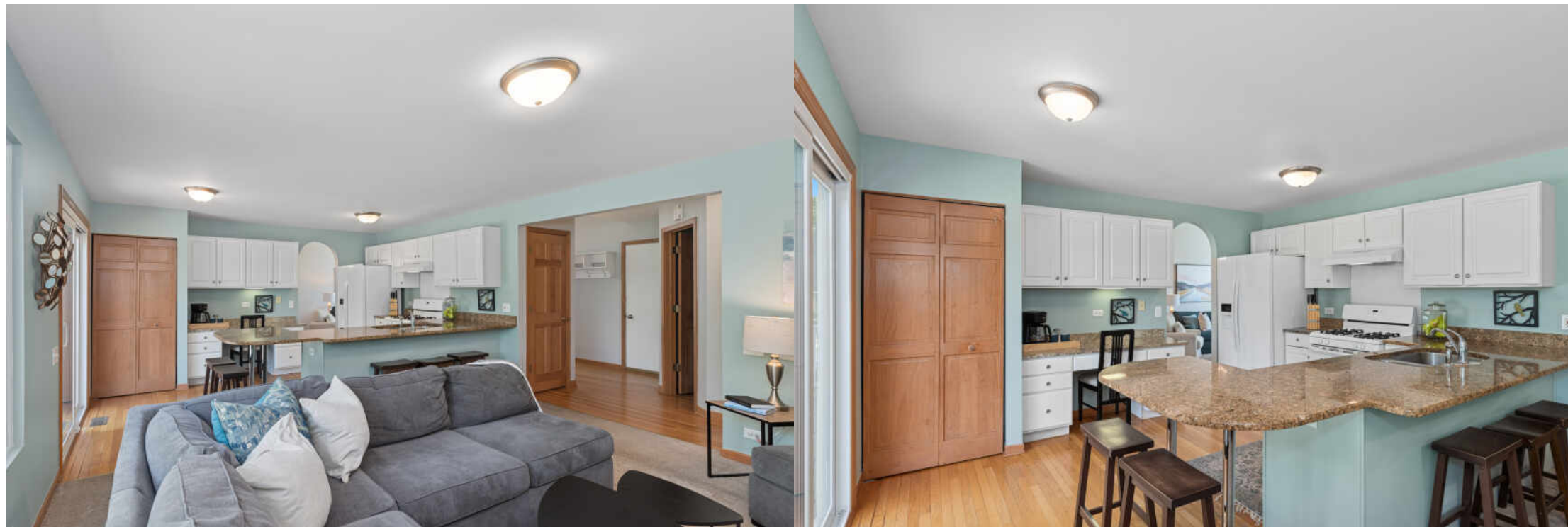
**TAXES: \$11,435**

**ASSESSMENTS: \$100 / YEAR**

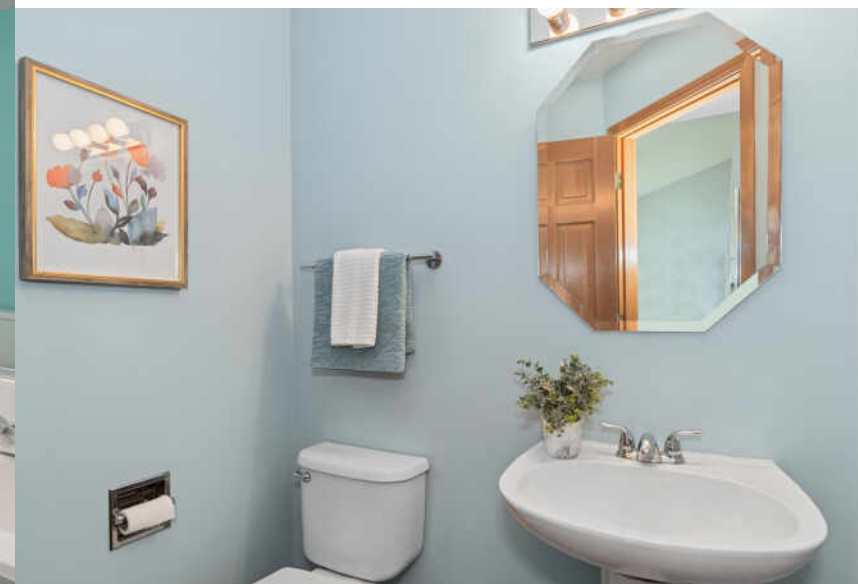
## SAVANNAH ROLLINS IN YOUR BACKYARD

Welcome to a home where pride of ownership shines throughout and where nature is truly in your backyard! Nestled in a special location, this well-maintained property boasts a fully fenced yard that backs directly to green space leading into the Rollins Savannah Forest Preserve. Simply open your backyard gate and step into nature-explore winding deer trails and encounter local wildlife just steps from home. Enter the naturally lit interior through a dramatic 2-story foyer that flows seamlessly into a spacious living and dining area, enhanced by vaulted ceilings that create a bright, open atmosphere. The dining room connects to the kitchen through a charming arched entryway. The kitchen features a large granite breakfast bar that seats five, planning desk, closet pantry, hardwood floors, and sliding doors that lead to a newer Trex composite deck ideal for entertaining or relaxing while taking in the natural views. Adjacent to the kitchen is a warm and inviting family room centered around a cozy fireplace flanked by built-in bookshelves and cabinetry. The main level also includes a convenient laundry room and powder room. Upstairs, the spacious primary suite with vaulted ceiling, a walk-in closet, and an en-suite bathroom featuring a soaking tub, separate shower, and dual vanities. The additional bedrooms are generously sized and share a full hall bath. The finished basement offers even more flexible living space, with a rec room big enough to also include a home office/play area; don't miss the additional half bath tucked in the corner. Storage is available in the unfinished portion of the utility room. This home is just steps away from Sunrise Park (playground, pickleball, rentable picnic shelter, sand volleyball and basketball) at the cul-de-sac.













HOME TO A RECREATIONAL LAKE AND A VARIETY OF COMMUNITY EVENTS, **GRAYSLAKE** IS A VIBRANT VILLAGE IN CENTRAL LAKE COUNTY.

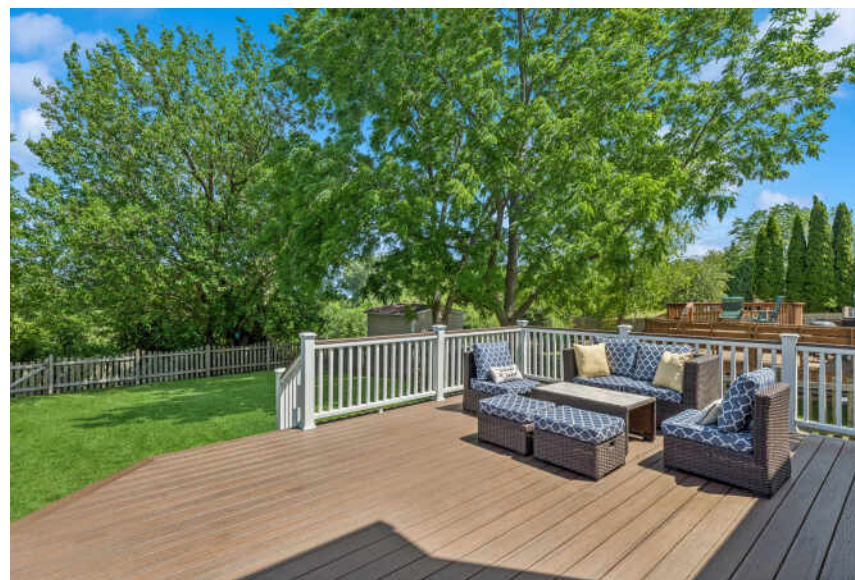
The lake remains at the center of the community and is a year-round attraction with fishing, swimming, and boating in the summer and ice fishing, hockey, and skating in the winter.

Grayslake retains its rural ambience with a historic downtown district and hometown celebrations such as a pet parade. There are also public golf courses, tennis courts, and recreational areas with swimming pools, skate parks, and ball fields. A 1,200-acre county forest preserve on the north side of town has a bird observation deck, trails, and wetlands.

The Grayslake Art Festival, Taste of Grayslake, and Grayslake Summer Days are popular attractions along with the Lake County Fair. Residents and visitors enjoy music, arts and crafts, carnival games, and local food vendors.

Grayslake has two train stations along Metra’s Milwaukee District North and North Central Service lines in addition to Pace bus routes throughout the village.





## NOTES



## KRYSTYNA FRITZ

(847) 894-1381

KFRITZ@ATPROPERTIES.COM

WWW.KRYSTYNAFRITZ.COM



All specifications, features, designs, price, assessments, taxes and materials are subject to change without notice. Depicted floor plans and architectural renderings are only an artist's impression.

