

1532 W WRIGHTWOOD AVENUE #3  
LINCOLN PARK



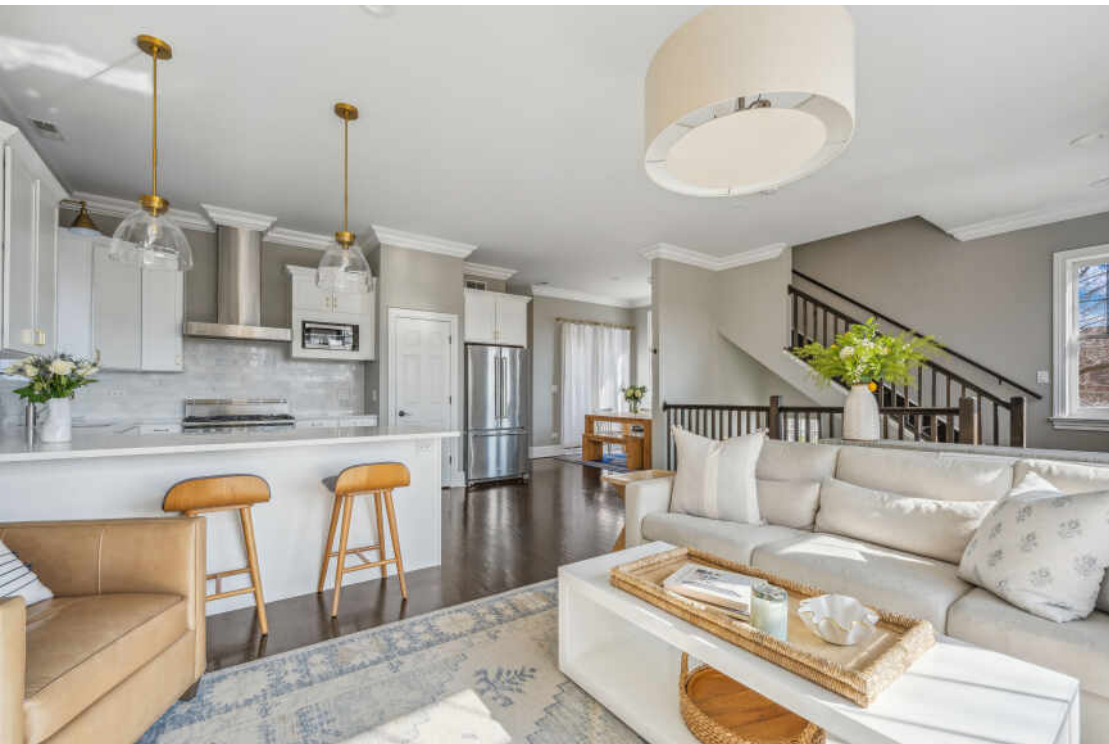


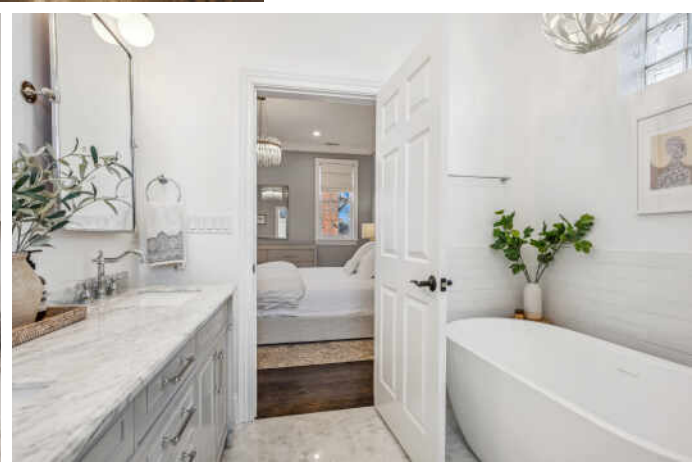
3 BEDROOM  
2 BATH  
TAXES: \$11,106  
ASSESSMENTS: \$197

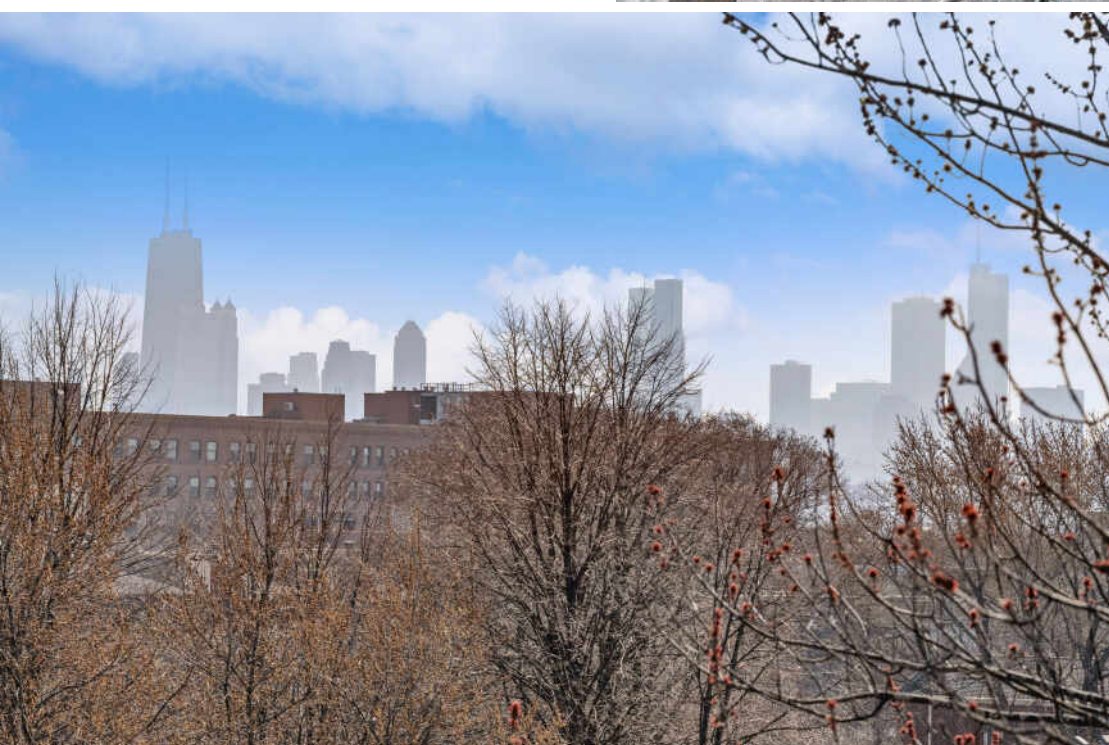
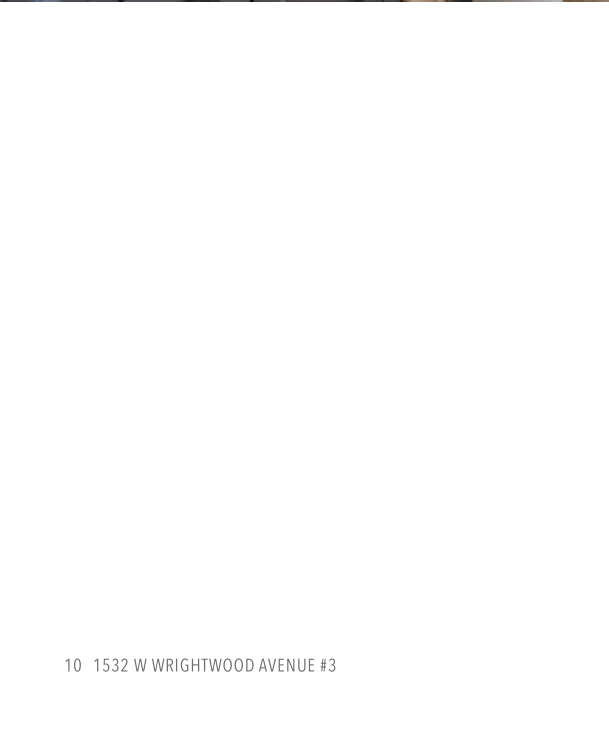
Get ready to move right into the serene ambiance of this Lincoln Park penthouse, overlooking Wrightwood Park! Indulge in the luxury of 3 outdoor spaces, including a private roof deck with breathtaking city views (entire south facing rooftop deck). With its generous proportions and refined finishes, this home boasts 10-foot ceilings and rich dark hardwood floors throughout. Located on the corner of the all-brick building constructed in 2008, this condo benefits from an abundance of natural light pouring in, especially with its South/East facing orientation.

- Bosch Dishwasher: November 2019
- LG Washer & Dryer: November 2020
- KitchenAid Refrigerator: January 2022
- Microwave: May 2020
- Hot Water Heater: March 2021
- Full Primary Bathroom Remodel: February 2022
- Full Kitchen Remodel: May 2020 (oven was not changed its from 2008)
- New Light fixtures throughout including kitchen, bathroom, primary bedroom and entryway
- Window Treatments
- Stained rooftop: June 2023
- 2nd bathroom refreshed with paint, lighting fixtures, new mirror and hardware completed in 2022.
- New fireplace mantle



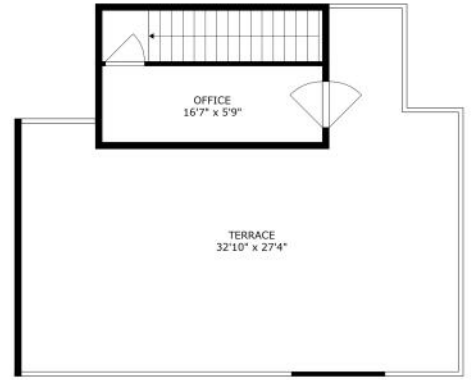




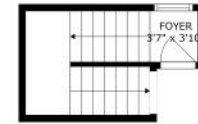




FLOOR 2



FLOOR 3



FLOOR 1

SIZES AND DIMENSIONS ARE APPROXIMATE, ACTUAL MAY VARY.





## BONNIE TRIPTON

(773) 896-5628

847-881-0200

BONNIE@ATPROPERTIES.COM

WWW.BONNIETRIPTON.COM

