

1580 VERDE LANE
FIELDS OF AMBRIA - MUNDELEIN





ROOM DIMENSIONS

LIVING ROOM : 16' × 12'

DINING ROOM : 13' × 10'

FAMILY ROOM : 26' × 12'

KITCHEN : 13' × 11'

PRIMARY BEDROOM : 16' × 22'

SECOND BEDROOM : 12' × 21'

THIRD BEDROOM : 19' × 10'

FOURTH BEDROOM : 17' × 10'

4 BEDROOM

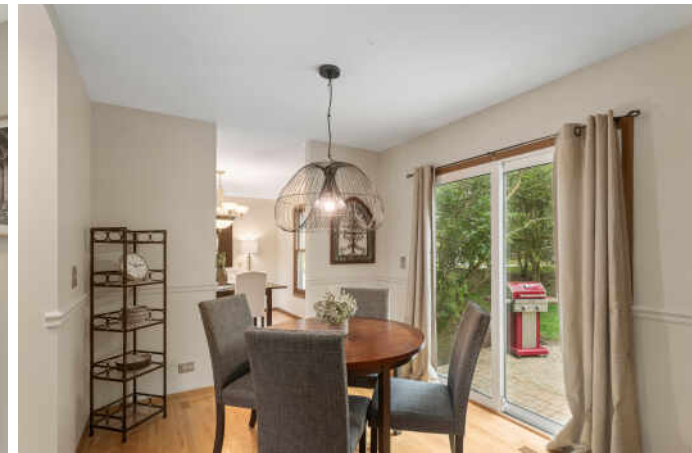
2.1 BATH

TAXES: \$12,713

ASSESSMENTS: \$100/YR VOLUNTARY

SOUGHT-AFTER FIELDS OF AMBRIA

Welcome to this sun-filled Valencia model, ideally located on a spacious corner lot in the sought-after Fields of Ambria neighborhood. Enjoy an unbeatable location; the community is adjacent to the Mundelein Park District, featuring Barefoot Bay a water park with lazy river, outdoor pool, ball fields, rec center, tennis courts, playground, and a sledding hill - just steps from your front door! Fremont Library, Mechanics Grove Elementary and middle school, high school and grocery shopping are within a couple miles. As you enter through the elegant lead glass front door, you're greeted by a bright, open two-story foyer and one of two staircases. The functional floor plan includes an extra-large living and dining room combo, perfect for entertaining. The eat-in kitchen flows seamlessly into the family room, featuring hardwood floors, a wood-burning fireplace, and two floor-to-ceiling windows that flood the space with natural light. Two sliding doors lead out to the paver patio and backyard. The kitchen boasts granite countertops, stone backsplash, stainless steel appliances, and an extra large walk-in pantry unique to this model - a true hidden feature! Upstairs, the primary suite is a retreat of its own, with a volume ceiling, sitting/office area, remodeled bath with double vanities, walk-in shower with seat, whirlpool soaking tub, and radiant heated floors (controller in AS IS condition). A generous walk-in closet completes the suite. Three additional generous size bedrooms offer ample space, including a super-sized bedroom over the garage that provides great flexibility. The unfinished basement is just about full, offering abundant storage or future finishing potential, plus a small concrete crawl space. The exterior includes a side-loading two-car garage and an extra-wide driveway - perfect for additional parking or outdoor play. And the backyard? A truly unique surprise! You have no neighbors behind you but instead....your own private view of Walela Farm & Gardens, offering a peaceful setting with a charming view of farm animals just beyond your fence. Don't miss the opportunity to make this sun-drenched, well-appointed home yours in one of Mundelein's most desired and community-focused neighborhoods!







LOCATED IN THE HEART OF LAKE COUNTY,
MUNDELEIN IS A THRIVING COMMUNITY
THAT CONTINUES TO GROW DUE TO ITS
ABUNDANT RECREATIONAL
OPPORTUNITIES, FRIENDLY COMMUNITY,
AND CONVENIENT TRANSPORTATION
OPTIONS.

Mundelein celebrates its history with a popular annual festival that includes musical performances, a parade, carnival, car show, fireworks, and more. The village also has a craft beer festival, farmers market, and an art festival.

Once a popular resort area for city dwellers looking to escape the heat, Diamond Lake remains one of the village's gems. The recreation area, one of 33 in the community, stretches over 100 acres with a pristine lake, sandy beaches, and shaded picnic areas as well as a floating sports park, paddle boat, and kayak rentals.

In addition to the beach, residents can enjoy a golf course, bike trails, community theater, and museum. The village's downtown area has been redeveloped and there are various commercial areas.

Residential areas include a diverse mix of housing styles including new construction and mixed-use developments.



NOTES

[illegible]



KRYSTYNA FRITZ

(847) 894-1381

KFRITZ@ATPROPERTIES.COM

WWW.KRYSTYNAFRITZ.COM



All specifications, features, designs, price, assessments, taxes and materials are subject to change without notice. Depicted floor plans and architectural renderings are only an artist's impression.

