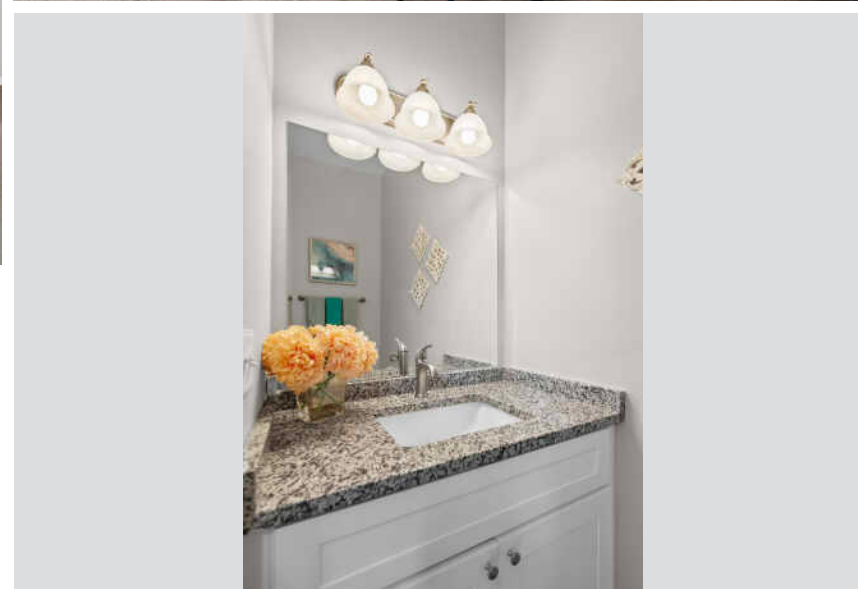
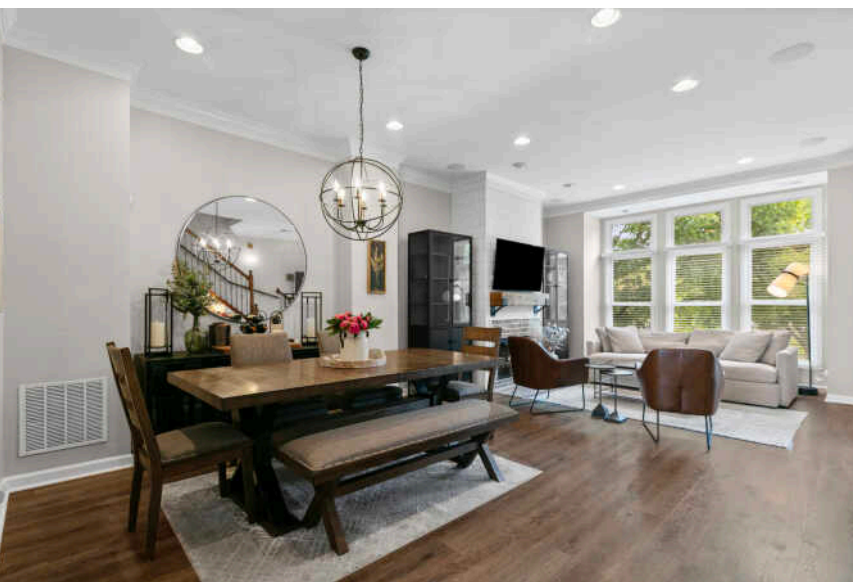


158 N ROSE STREET
PALATINE





ROOM DIMENSIONS

LIVING ROOM : 19' × 16'

DINING ROOM : 16' × 10'

KITCHEN : 16' × 14'

PRIMARY BEDROOM : 17' × 12'

SECOND BEDROOM : 15' × 12'

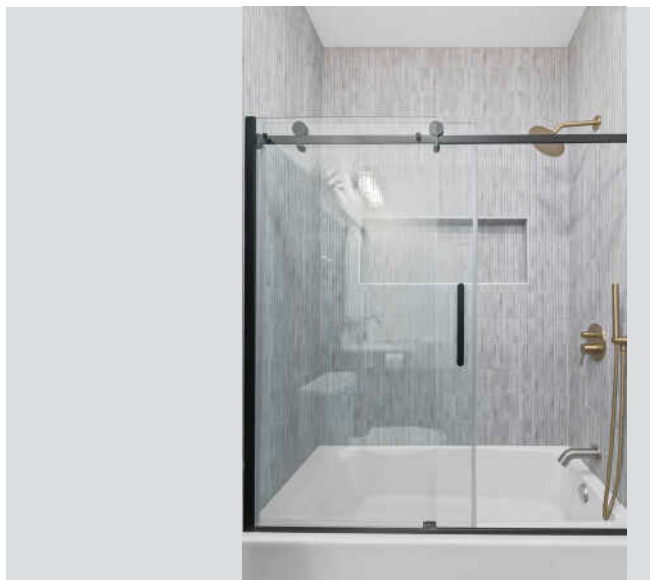
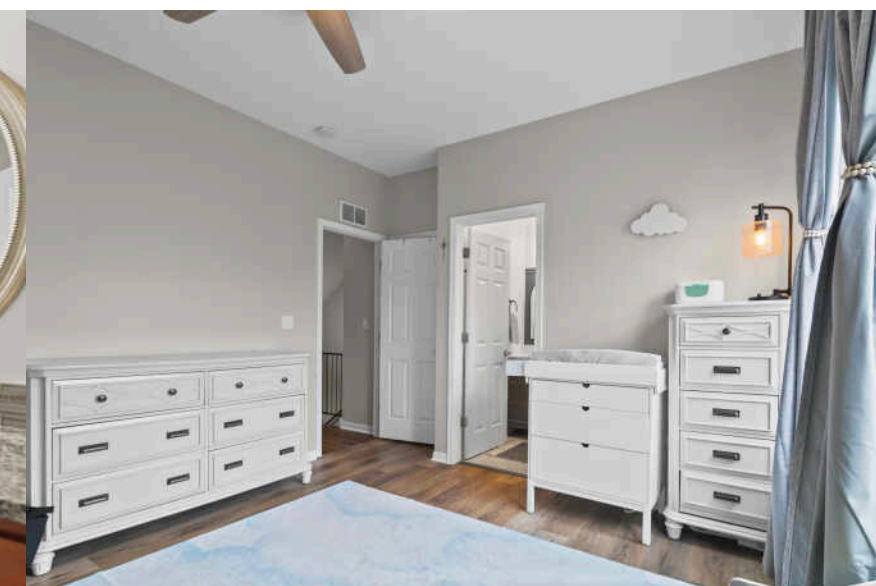
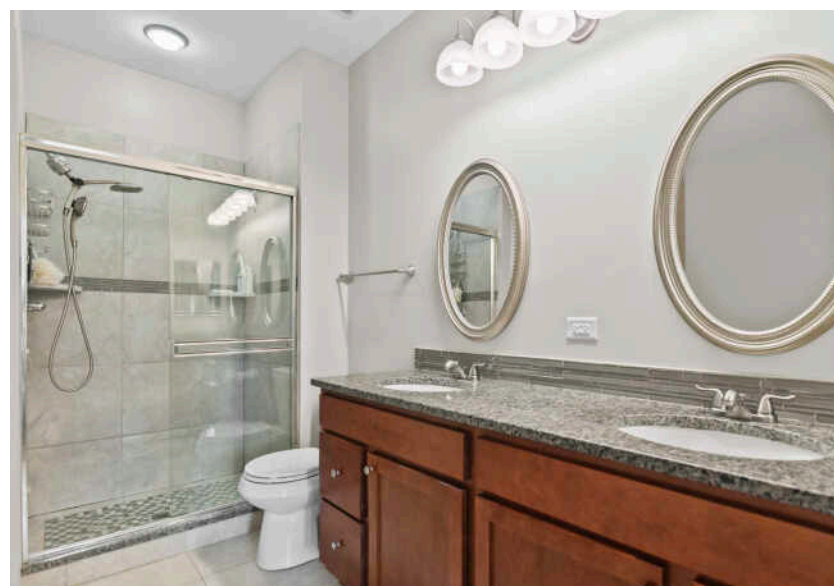
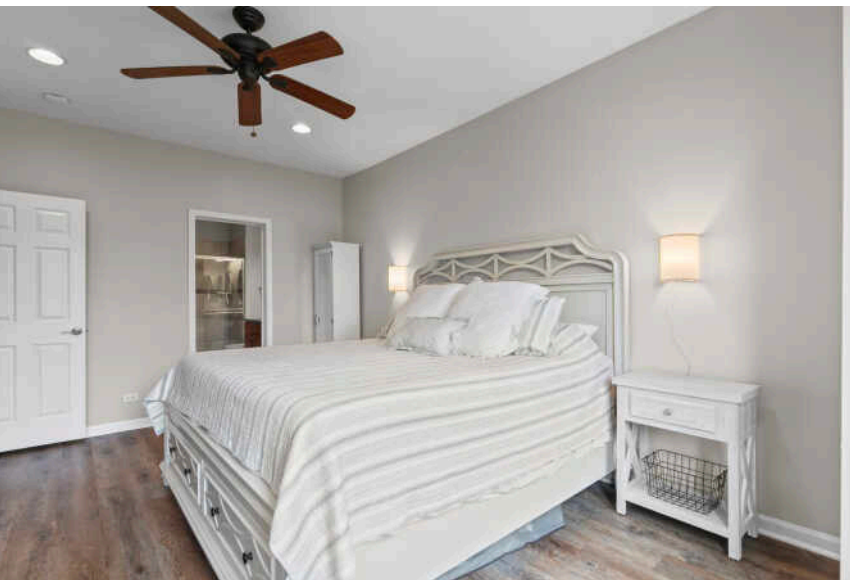
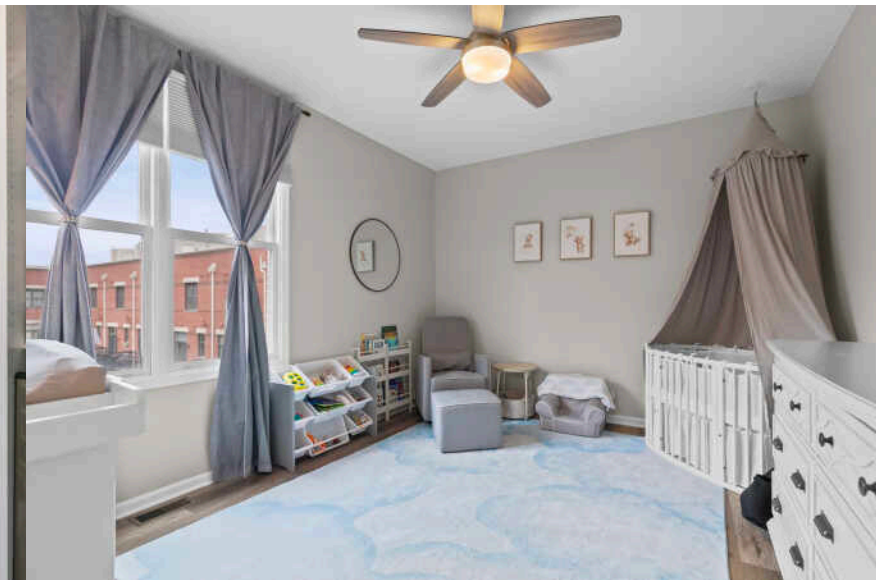
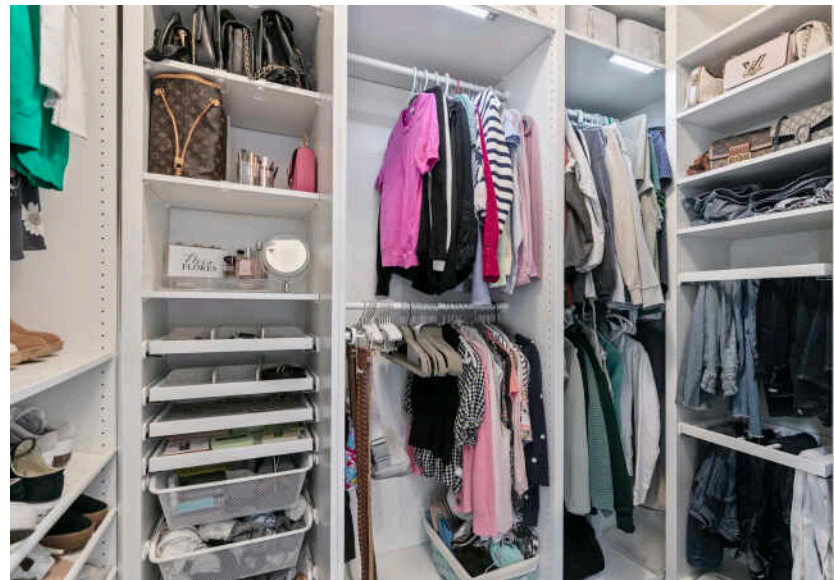
2 BEDROOM

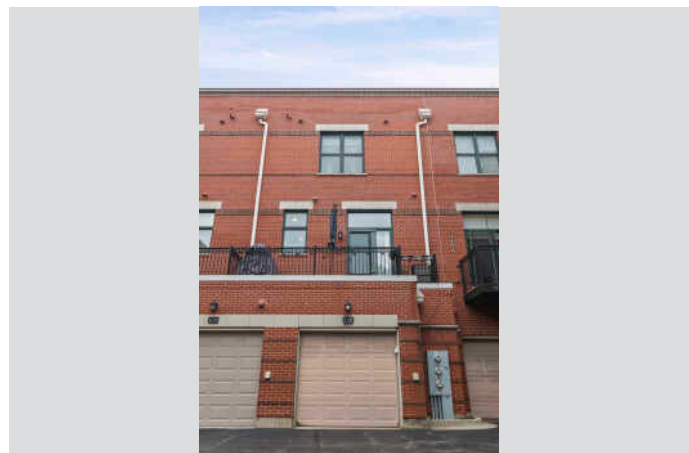
2.1 BATH

TAXES: \$7,771

ASSESSMENTS: \$464 / MONTH

ONE STEP INSIDE THIS BEAUTIFULLY LIT, OPEN AND AIRY HOME, AND YOU'LL KNOW THIS IS THE PLACE. THE FRONT ROOM WELCOMES YOU WITH A STATEMENT FIREPLACE, OPEN PLAN, AND 10FT CEILINGS WITH CROWN MOLDING. THIS MAIN LEVEL FLOWS INTO A STUNNING UPDATED KITCHEN WITH ABUNDANT COUNTER AND CABINET SPACE, OPENING TO A BALCONY SPANNING THE ENTIRE WIDTH OF THE HOME. UPSTAIRS, THE EXPANSIVE PRIMARY SUITE FEATURES A WALK-IN CLOSET AND SPACIOUS DOUBLE-SINK BATHROOM. DOWN THE HALL, PAST THE CONVENIENTLY LOCATED LAUNDRY, IS A LARGE SECOND BEDROOM WITH ITS OWN ELEGANTLY UPDATED FULL BATHROOM. ONE MORE SURPRISE AWAITS ABOVE: THE CROWN JEWEL OF PALATINE ROWHOME LIVING - AN INCREDIBLE PRIVATE ROOF-TOP DECK. ALL THIS PLUS A FINISHED BASEMENT, PRIVATE GARAGE, AND JUST STEPS FROM BOTH THE METRA AND DOWNTOWN AREA.





Total: 1795 sq. ft
 1st Floor: 292 sq. Ft, 2nd Floor: 27 sq. Ft, 3rd Floor: 724 sq. Ft, 4th Floor: 752 sq. Ft, 5th Floor: 0 sq. ft
 Excluded Areas: Stairwell: 99 sq. Ft, Garage: 224 sq. Ft, Balcony: 53 sq. Ft,
 Terrace: 250 sq. Ft, Walls: 168 sq. ft

Floor Plan Created By Cubicasa App. Measurements Deemed Highly Reliable But Not Guaranteed.



THE VILLAGE OF **PALATINE** HAS MASTERED THE ART OF BALANCE.

The growing community has a healthy mix of residents who enjoy its friendly suburban lifestyle and businesses that fuel the local economy.

The village embraces growth to support a wealth of amenities and services. The Palatine Park District has 28 parks, an 18-hole golf course, and a variety of classes from fitness and sports to arts and crafts. Palatine offers scenic views with winding trails, beautiful residential areas, and nearby Deer Grove Forest Preserve.

Palatine's downtown business district is both charming and self-sufficient for residents. Restaurants include a mix of local favorites from classic eateries to upscale breweries, as well as a variety of local bars. The village hosts several street festivals and a popular farmers market.

Commuters have access to the Chicago Loop with the Palatine Metra station and I-90. The nearby Chicago Executive Airport offers private and corporate aircraft services.



JENNA MOREAU

1 7733209985

8477970200

JENNAMOREAU@ATPROPERTIES.COM