

159 E WALTON PLACE, UNIT 12D, CHICAGO IL 60611  
THE PALMOLIVE BUILDING





#### ROOM DIMENSIONS

LIVING ROOM : 22' × 15'

KITCHEN : 15' × 10'

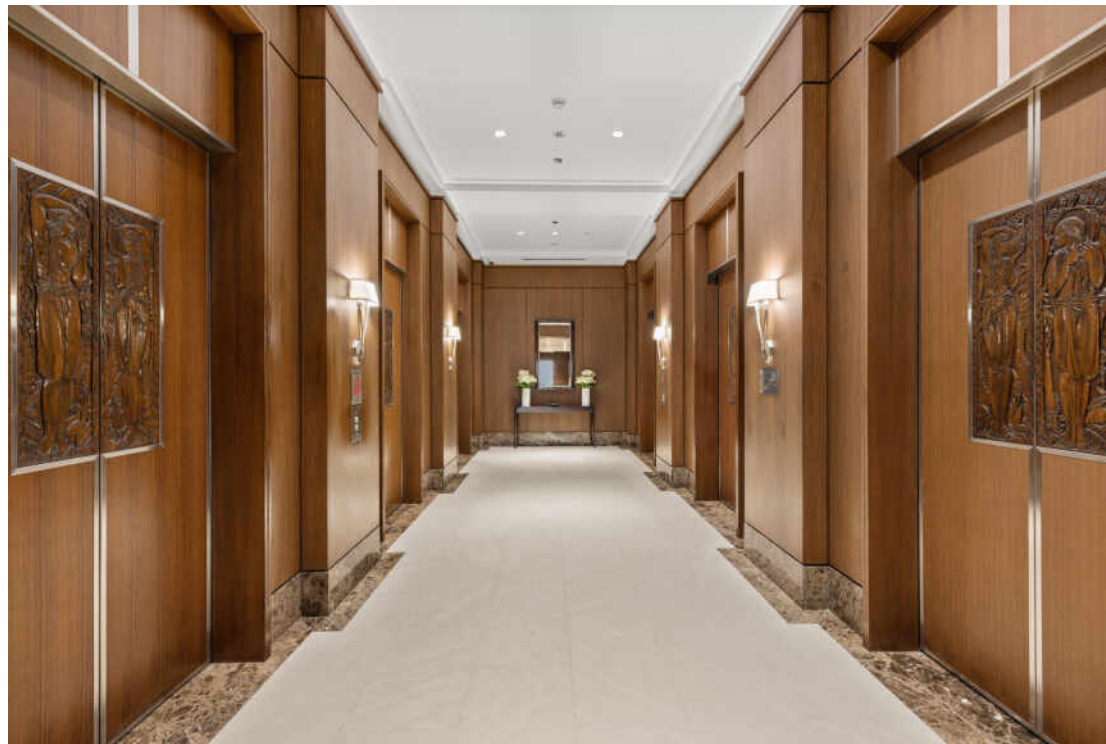
PRIMARY BEDROOM : 14' × 12'

PRIMARY BATHROOM : 11' × 9'

2ND BEDROOM : 13' × 11'

2ND BATHROOM : 6' × 10'

FOYER : 7' × 13'



2 BEDROOM

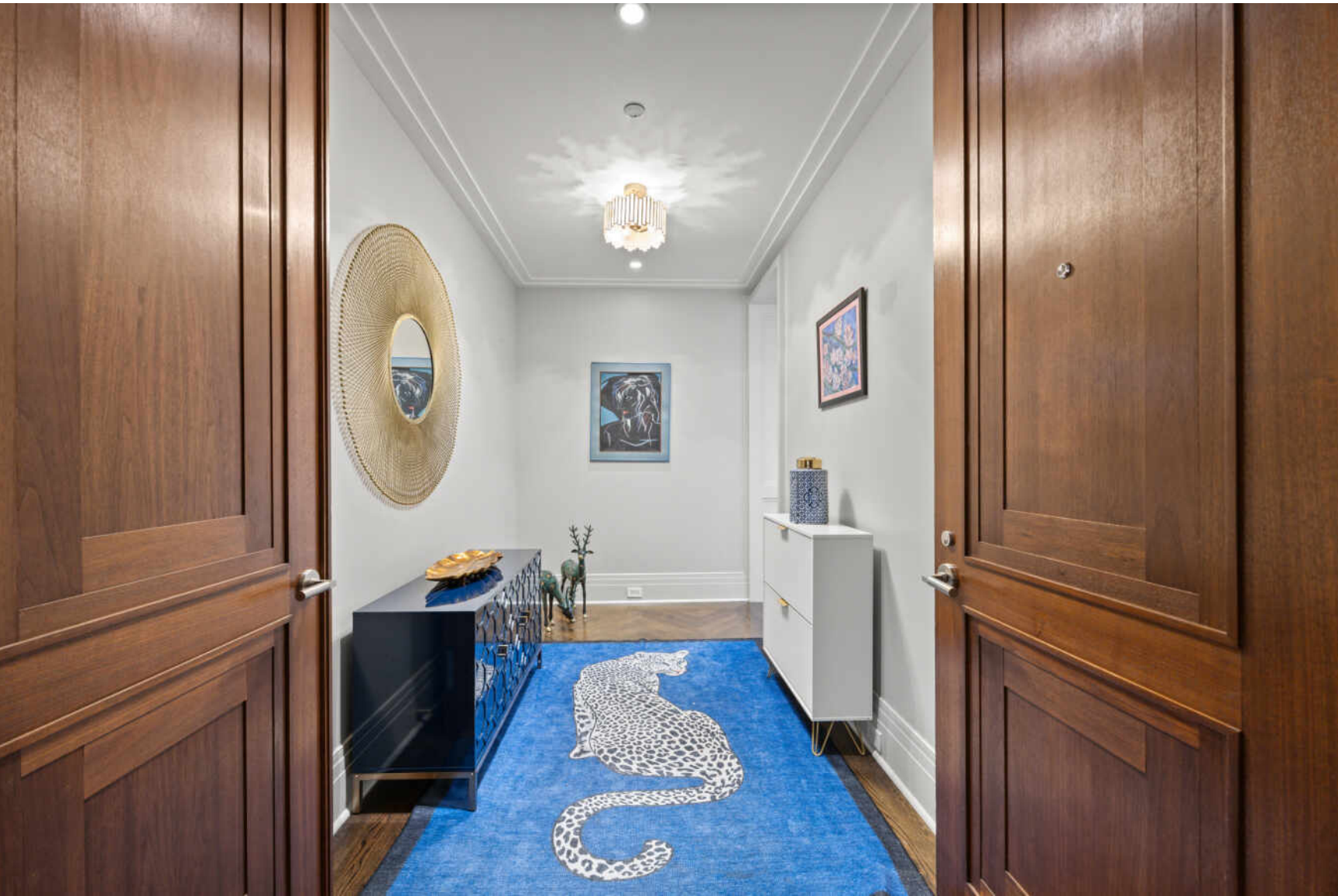
2.1 BATH

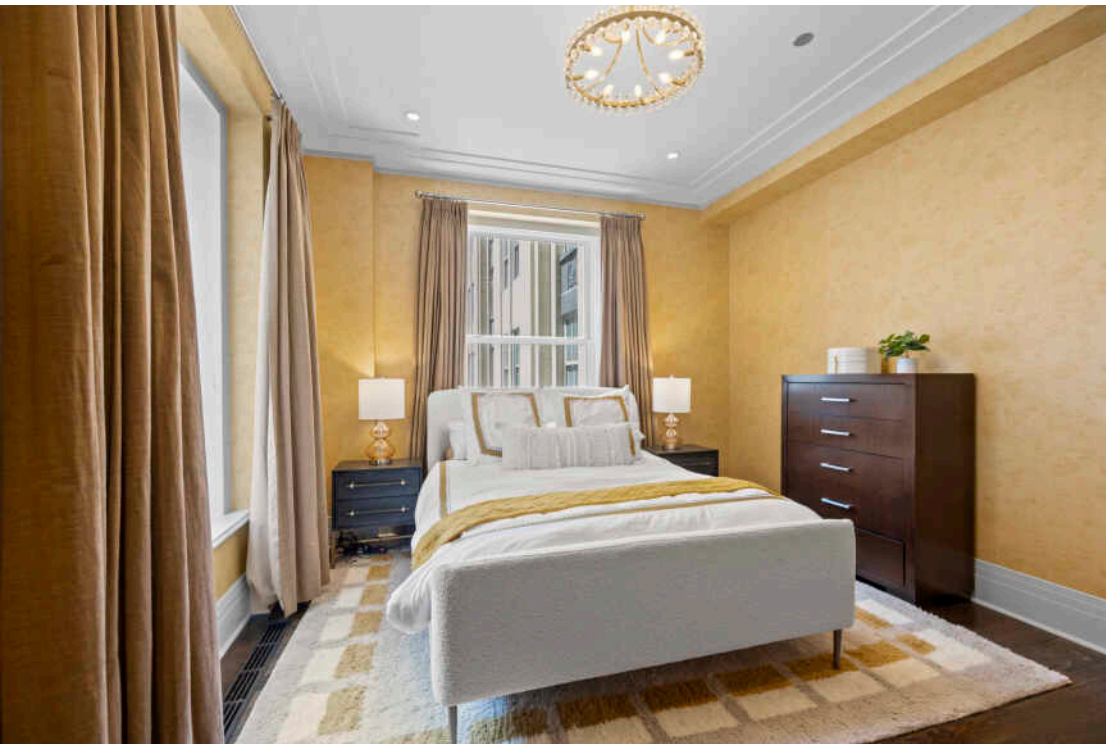
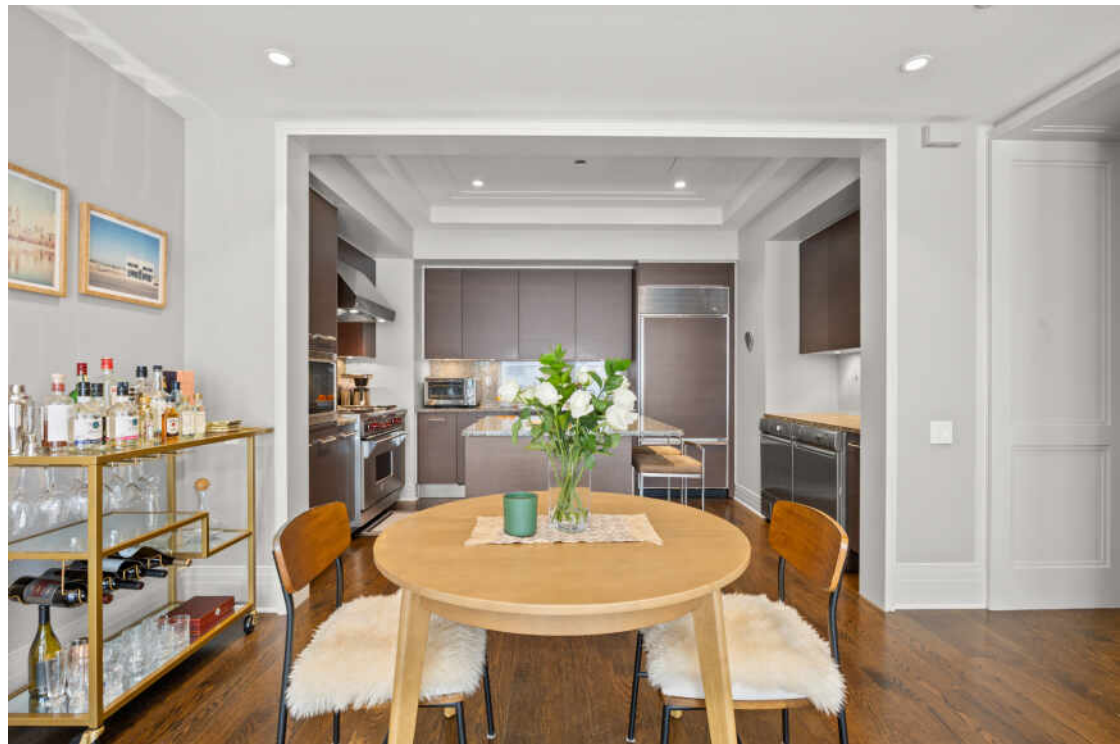
TAXES: \$14,536

ASSESSMENTS: \$1,669 + \$389

## REFINED LUXURY LIVING AT THE CHICAGO LANDMARK PALMOLIVE BUILDING

- This 37 story Art Deco building was completed in 1929, then reimagined as a luxury residential condominium building in 2005.
- Residence 12D features two spacious bedrooms, two ensuite & one-half bathrooms, rich hardwood floors, and an elegant open floor plan designed for both comfort and entertaining.
- Enter through grand double-doors into a formal foyer that leads to a beautifully designed living room with a marble surround gas fireplace.
- Chef's kitchen is thoughtfully appointed with island seating, top-of-the-line Wolf and Sub-Zero appliances, Italian Poliform Varenna cabinets & abundant counter space.
- Primary suite offers a spacious bedroom with walk in closet, a luxurious, spa-like bath with a marble double vanity, a separate jetted tub & an oversized shower.
- Split - bedroom layout provides privacy for the generous second bedroom, complete with its own ensuite bath and ample closet space.
- Residents of the Palmolive enjoy an exceptional array of amenities, including a state-of-the-art fitness center, men's and women's locker rooms, a rejuvenating sauna, and the exclusive Beacon Club resident lounge.
- Valet garage parking, 24-hour door staff, an on-site manager, and dedicated concierge service deliver a truly white-glove living experience.











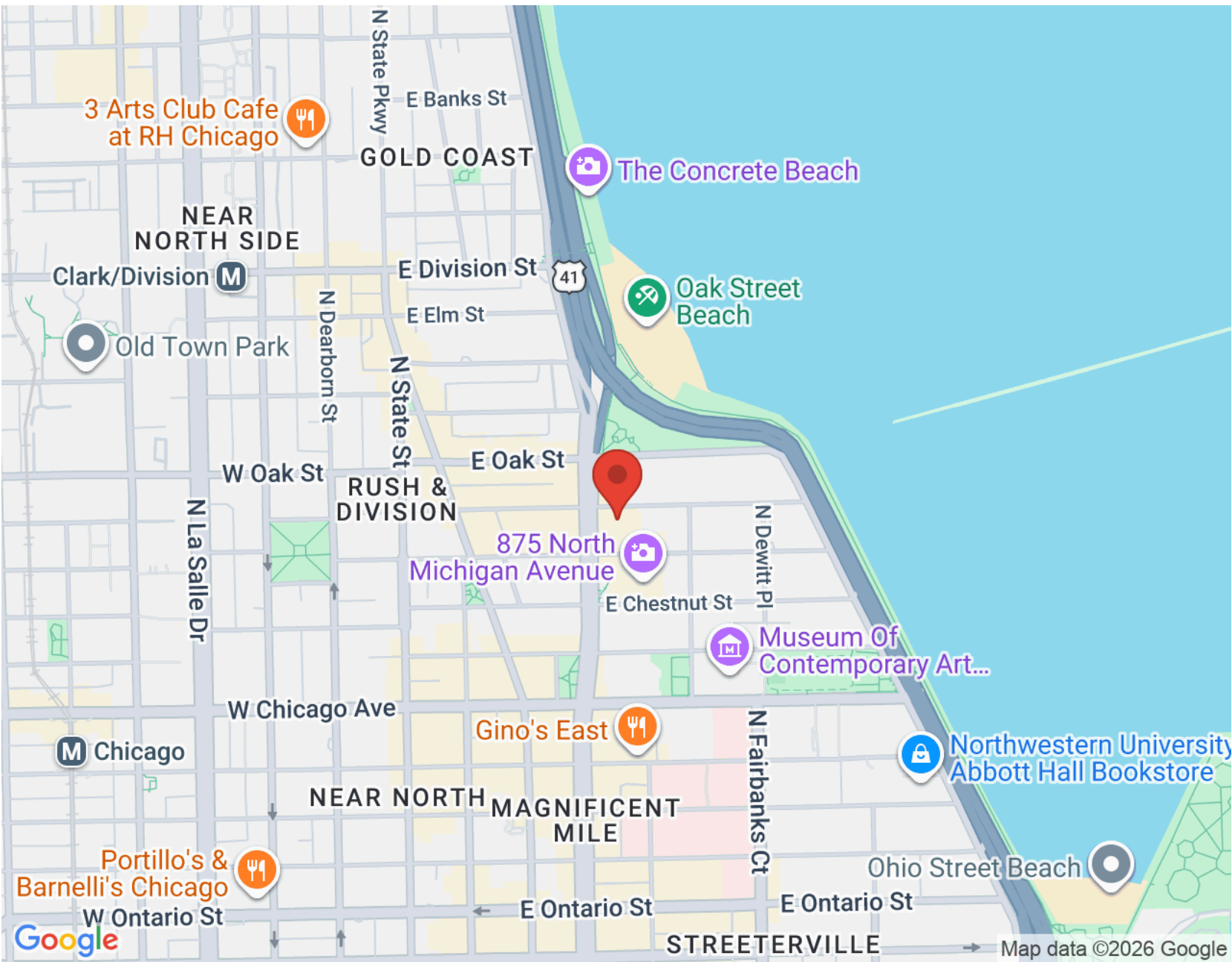
## THE MAGNIFICENT MILE LIVES UP TO ITS NAME.

The upscale stretch of North Michigan Avenue is known as one of the most vibrant commercial and cultural destinations in the world.

Skyscrapers, landmark architecture, and high-end retailers line the streets, extending north to Oak Street and south to the Chicago River. Just a few blocks from Lake Michigan, the Magnificent Mile is also home to world-class hotels and prestigious education and medical facilities.

The concept for the Magnificent Mile was part of the 1909 Burnham Plan of Chicago, and the district was ultimately named in the 1940s. The Magnificent Mile is steeped in Chicago cultural history, with nearly a dozen buildings that are Chicago Landmarks and National Historic Landmarks, or that are listed in the National Register of Historic Places. Some of the world's tallest buildings are located here, including 875 North Michigan Avenue, the building formerly known as the John Hancock Center.

In the Magnificent Mile district, residents live in luxury condominiums and contemporary high-rises with all the modern amenities. Public transportation is plentiful with numerous bus lines running up and down Michigan Avenue.





## ROSE LEVERSHA

(773) 704-4622

ROSELEVERSHA@ATPROPERTIES.COM

INSTAGRAM @ROSELEVERSHA

WWW.ROSELEVERSHA.COM

